



**Clackmannanshire  
Council**

[www.clacksweb.org.uk](http://www.clacksweb.org.uk)

**(VARIOUS STREETS, ALLOA)  
(20 MPH SPEED LIMIT) (AMENDMENT NO.2) ORDER 2013**

Clackmannanshire Council, in exercise of the powers conferred upon it by Section 84(1) and (2) and Part IV of Schedule 9 to the Road Traffic Regulation Act 1984 (as amended) and all other enabling powers and after consultation with the Chief Officer of Police in accordance with Part III of Schedule 9 to the said Act, hereby make the following Order:-

- (1) This Order may be cited as "The Clackmannanshire Council (Various Streets, Alloa) (20 mph Speed Limit) (Amendment No.2) Order 2013" and shall come into operation on the 18th September 2013.
- (2) This Order amends the Clackmannanshire Council (Various Streets, Alloa) (20 Speed Limit) Order 2011 by adding to the Schedule to that order, the additional lengths of road as detailed in the Schedule to this Amendment Order.
- (3) The Interpretation Act 1978 shall apply for the interpretation of this Order as it applies for the interpretation of an Act of Parliament.
- (4) A speed limit of 20 miles per hour is hereby imposed on the lengths of roads specified in the Schedule to this Order and no person shall drive any motor vehicle at a speed exceeding 20 miles per hour on the said lengths of roads.
- (5) The restriction imposed by this Order shall be in addition to and not in derogation of any restriction or requirement imposed by any regulations made or having effect as if made under the Road Traffic Regulation Act 1984 or by or under any other enactment.

**DATED THIS FOURTH DAY OF SEPTEMBER, TWO THOUSAND AND THIRTEEN**

**Garry Dallas**

Director of Services to Communities

Clackmannanshire Council  
Greenfield  
ALLOA, FK10 2AD

**THE CLACKMANNANSHIRE COUNCIL  
(VARIOUS STREETS, ALLOA)  
(20 MPH SPEED LIMIT) (AMENDMENT NO.2) ORDER 2013**

**Schedule**

<b>Lengths of Road in Alloa</b>	<b>Sections of road over which 20mph speed limit restriction will be applicable</b>
Ochil Street	For its entirety.
Ludgate	From its junction with Kellie Place northwards to its junction with B9096 Tullibody Road, a distance of 106 metres or thereby.
Kellie Place	From its junction with Mar Place westwards to its junction with A907 Ludgate, a distance of 84 metres or thereby.

**THE CLACKMANNANSHIRE COUNCIL  
(VARIOUS STREETS, ALLOA)  
(20 MPH SPEED LIMIT) (AMENDMENT NO.2) ORDER 2013**

**Statement of Reasons for Making the Order**

The 20 MPH limit is considered necessary in the interests of road safety, and will ensure that traffic speeds are limited to a speed compatible with the local environment.

**Garry Dallas**  
Director of Services to Communities

Clackmannanshire Council  
Greenfield  
ALLOA  
FK10 2AD

**THE CLACKMANNANSHIRE COUNCIL (VARIOUS STREETS, ALLOA) (20 MPH SPEED LIMIT)  
(AMENDMENT NO.2) ORDER 2013**

The Council proposes to make the above Order under Section 84(1) and (2) and Part IV of Schedule 9 to the Road Traffic Regulation Act 1984 which amends the Clackmannanshire Council (Various Streets, Alloa) (20 MPH Speed Limit) Order 2011 by adding additional lengths of roads. This will designate the roads in Alloa: **Ochil Street** (for its entirety); **Ludgate** (from its junction with Kellie Place northwards to its junction with B9096 Tullibody Road, a distance of 106 metres or thereby); and **Kellie Place** (from its junction with Mar Place westwards to its junction with A907 Ludgate, a distance of 84 metres or thereby) as a 20 miles per hour speed limit to ensure that traffic speeds are limited to a speed compatible with the local environment. Objectors must state their reasons in writing to Gillian White, Strategy and Customer Services, Greenfield, Alloa, FK10 2AD by DATE. Full details are available on [www.clacksweb.org.uk](http://www.clacksweb.org.uk) or may be examined at Clackmannanshire Council's Offices, Greenfield, Alloa, FK10 2AD, and any Council Office/Library, during normal office hours between 20/03/13 and 12/04/13.

**THE CLACKMANNANSHIRE COUNCIL (VARIOUS STREETS, ALLOA) (20 MPH SPEED LIMIT)  
(AMENDMENT NO.2) ORDER 2013**

The Council has made the above Order under Section 84(1) and (2) and Part IV of Schedule 9 to the Road Traffic Regulation Act 1984 which amends the Clackmannanshire Council (Various Streets, Alloa) (20 MPH Speed Limit) Order 2011 by adding additional lengths of roads. This will designate the roads in Alloa: **Ochil Street** (for its entirety); **Ludgate** (from its junction with Kellie Place northwards to its junction with B9096 Tullibody Road, a distance of 106 metres or thereby); and **Kellie Place** (from its junction with Mar Place westwards to its junction with A907 Ludgate, a distance of 84 metres or thereby) as a 20 miles per hour speed limit to ensure that traffic speeds are limited to a speed compatible with the local environment. Anyone wishing to question the validity of any of the provisions within this order should write to the Court of session within six weeks of 18th September 2013. Full details are available on [www.clacksweb.org.uk](http://www.clacksweb.org.uk) or may be examined at Clackmannanshire Council's Offices, Greenfield, Alloa, FK10 2AD, and any Council Office/Library, during normal office hours.

**THE CLACKMANNANSHIRE COUNCIL  
(VARIOUS STREETS, ALLOA)  
(20 MPH SPEED LIMIT) (AMENDMENT NO.2) ORDER 2013**

Clackmannanshire Council has made the above named Order under Section 84(1) and (2) and Part IV of Schedule 9 to the Road Traffic Regulation Act 1984 (as amended) on 4th September 2013.

FULL DETAILS of this Order is as published in the Alloa Advertiser on the 20th March 2013 which amends the Clackmannanshire Council (Various Streets, Alloa) (20 MPH Speed Limit) Order 2011 by adding to the Schedule to that order, the additional lengths of road as detailed in the Schedule to this Amendment Order, which will designate the sections of road as a 20 miles per hour speed limit. The speed restrictions are being amended to ensure that traffic speeds are limited to a speed compatible with the local environment.

A copy of the order, together with a copy of the relative plan is available on [www.clacksweb.org.uk](http://www.clacksweb.org.uk) or may be examined at Clackmannanshire Council's Headquarters at Greenfield, Alloa, FK10 2AD or Lime Tree House, Castle Street, Alloa, FK10 1EX or at any Council Library / CAP, during normal office hours, free of charge.

Any person wishing to object to the validity of the order or of any provision contained therein on the grounds that it is not within the powers conferred by the aforesaid Act or that if any requirement therein has not been complied with, may within six weeks from 18th September 2013 apply to the Court of Session for this purpose.

**Garry Dallas**  
Director of Services to Communities

Clackmannanshire Council, Greenfield, ALLOA, FK10 2AD

**Schedule**

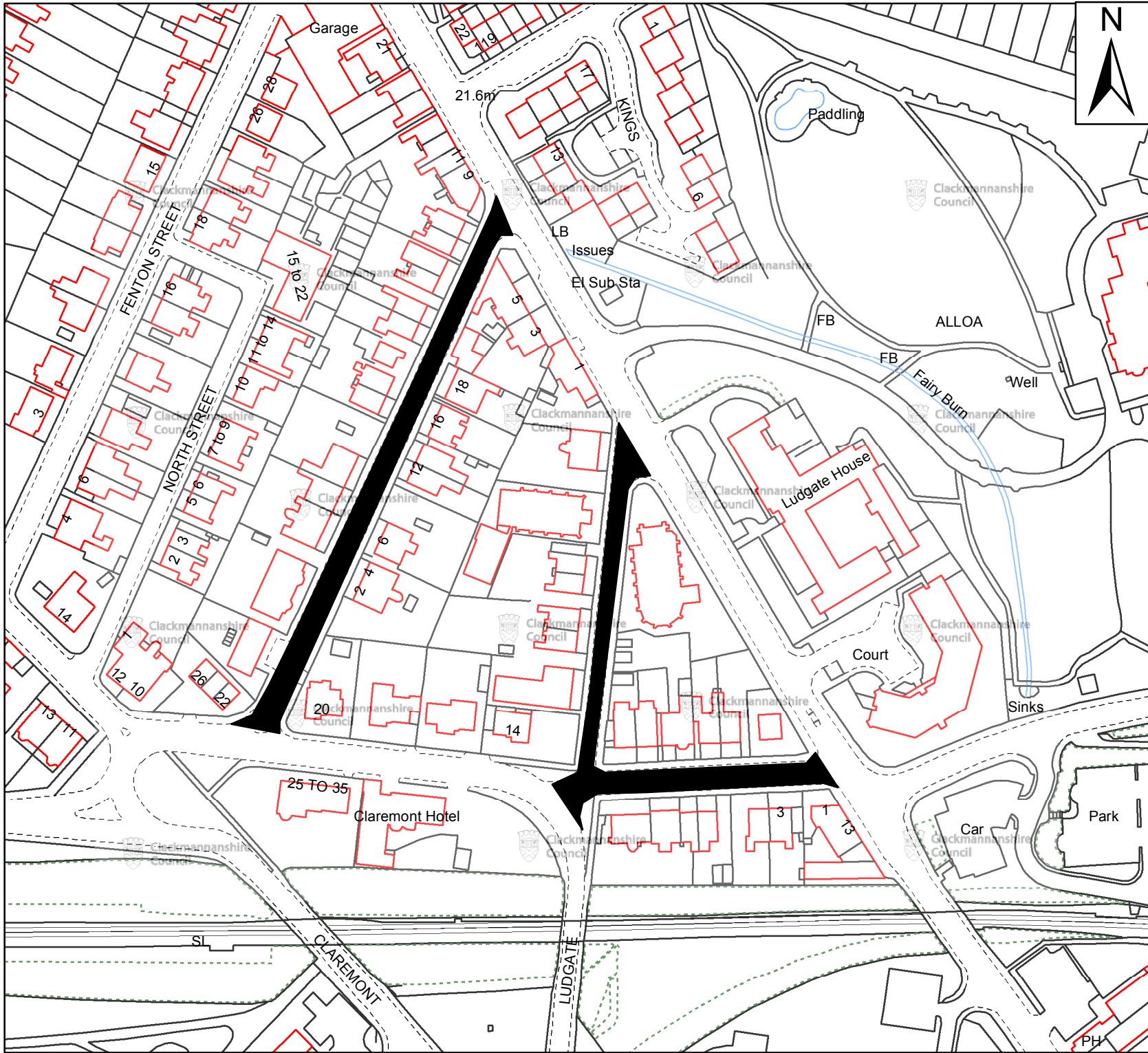
<b>Lengths of Road in Alloa</b>	<b>Sections of road over which 20mph speed limit restriction will be applicable</b>
Ochil Street	For its entirety.
Ludgate	From its junction with Kellie Place northwards to its junction with B9096 Tullibody Road, a distance of 106 metres or thereby.
Kellie Place	From its junction with Mar Place westwards to its junction with A907 Ludgate, a distance of 84 metres or thereby.

**THE CLACKMANNANSHIRE COUNCIL  
(VARIOUS STREETS, ALLOA)  
(20 MPH SPEED LIMIT) (AMENDMENT NO.2) ORDER 2013**

This is the plan referred to in The Clackmannanshire Council (Various Streets, Alloa) (20 mph Speed Limit) (Amendment No. 2) Order 2013 made by Clackmannanshire Council on 4th September 2013.

**Garry Dallas**  
Director of Services to Communities

Clackmannanshire Council  
Greenfield  
ALLOA  
FK10 2AD



Streets covered by  
20mph Limit

DRG13-032  
20mph Limit

Scale : NTS  
Paper Size : A4

Date : Feb 2013

 **Clackmannanshire Council**  
www.clacksweb.org.uk  
Services to Communities  
Kilncraigs  
Greenside Street  
Alloa  
FK10 1EB

Tel: 01259 450 000 Fax: 01259 727 452  
development\_services@clacks.gov.uk

Reproduced by permission of Ordnance Survey on behalf of HMSO. © Crown copyright and database right 2013. All rights reserved.  
Ordnance Survey Licence number 100020783.