



**(MENSTRIE PLACE, MENSTRIE)  
(TEMPORARY PROHIBITION OF DRIVING, PARKING AND LOADING) ORDER 2025**

The Clackmannanshire Council, in exercise of the powers conferred on them by Section 14 of the Road Traffic Regulation Act 1984 as amended by the Road Traffic (Temporary Restriction) Act 1991 and of all other powers enabling them in that behalf, hereby make the following Order.

1. This Order may be cited as "The Clackmannanshire Council (Menstrie Place, Menstrie) (Temporary Prohibition of Driving, Parking and Loading) Order 2025" and notwithstanding the date hereof, the Schedule shall come into operation at 0930 hours until 1300 hours on Friday 28<sup>th</sup> March 2025.
2. The effect of this Order is that there will be no driving, parking and loading at any time during:

The period from 0930 hours until 1300 hours on Friday 28<sup>th</sup> March 2025, on the section of roads described in Schedule. The temporary prohibition of driving, parking and loading is required for manhole repair.

**DATED THIS ELEVENTH DAY OF MARCH, TWO THOUSAND AND TWENTY FIVE**

Kevin Wells  
**Strategic Director (Place)**

Clackmannanshire Council  
Kilncraigs  
ALLOA  
FK10 1EB

<b>SCHEDULE</b>	
<b>List of Roads</b>	<b>Section of road over which a temporary prohibition of driving, parking and loading is applicable from 0930 hours until 1300 hours on Friday 28<sup>th</sup> March 2025.</b>
Menstrie Place, Menstrie	From its junction with the school entrance, eastwards for a distance of 45 metres or thereby.
Diversion	Via Elmbank, Forthvale, Main Street East, Brook Street, Castle Road, Menstrie Place and vice versa.

**THE CLACKMANNANSHIRE COUNCIL**  
**(MENSTRIE PLACE, MENSTRIE)**  
**(TEMPORARY PROHIBITION OF DRIVING, PARKING AND LOADING) ORDER 2025**

**STATEMENT OF REASONS FOR MAKING THE ORDER**

The temporary prohibition of driving, parking and loading is required for manhole repair.

Kevin Wells  
**Strategic Director (Place)**

Clackmannanshire Council  
Kilncraigs  
ALLOA  
FK10 1EB

## **The Clackmannanshire Council (Menstrie Place, Menstrie) (Temporary Prohibition of Driving, Parking and Loading) Order 2025**

The Council has made "The Clackmannanshire Council (Menstrie Place, Menstrie) (Temporary Prohibition of Driving, Parking and Loading) Order 2025, under the Road Traffic Regulation Act 1984 (as amended) on 11<sup>th</sup> March 2025: where there will be a temporary prohibition of driving, parking and loading at **Menstrie Place, Menstrie** (From its junction with the school entrance, eastwards for a distance of 45 metres or thereby). Diversion via Elmbank, Forthvale, Main Street East, Brook Street, Castle Road, Menstrie Place and vice versa. The order runs from 0930 hours until 1300 hours on Friday 28<sup>th</sup> March 2025. The temporary prohibition of driving, parking and loading is required for manhole repair. Full details are available on [www.clacks.gov.uk](http://www.clacks.gov.uk)

**THE CLACKMANNANSHIRE COUNCIL**  
**(MENSTRIE PLACE, MENSTRIE)**  
**(TEMPORARY PROHIBITION OF DRIVING, PARKING AND LOADING) ORDER 2025**

The Clackmannanshire Council has made the above named Order under Section 14 of the Road Traffic Regulation Act 1984 (as amended) on 11<sup>th</sup> March 2025.

The effect of this Order is that there will be no driving, parking and loading at any time during the period from 0930 hours until 1300 hours on Friday 28<sup>th</sup> March 2025, on the section of roads described in Schedule. The temporary prohibition of driving, parking and loading is required for manhole repair. A copy of the Order, together with a copy of the relative plan, is available on [www.clacks.gov.uk](http://www.clacks.gov.uk)

Kevin Wells  
**Strategic Director (Place)**

Clackmannanshire Council  
Kilncraigs  
ALLOA  
FK10 1EB

<b>SCHEDULE</b>	
<b>List of Roads</b>	<b>Section of road over which a temporary prohibition of driving, parking and loading is applicable from 0930 hours until 1300 hours on Friday 28<sup>th</sup> March 2025.</b>
Menstrie Place, Menstrie	From its junction with the school entrance, eastwards for a distance of 45 metres or thereby.
Diversion	Via Elmbank, Forthvale, Main Street East, Brook Street, Castle Road, Menstrie Place and vice versa.

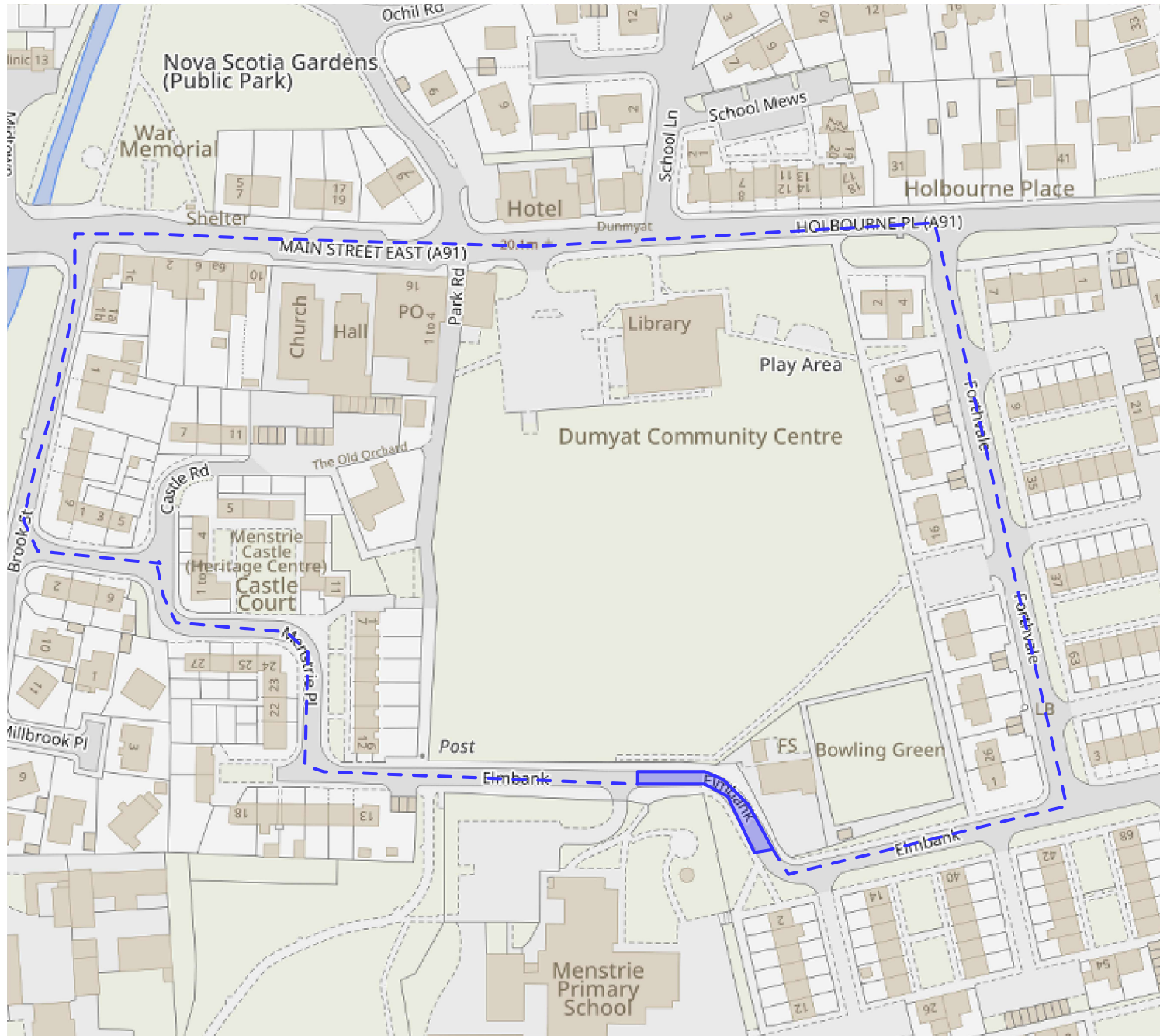
**THE CLACKMANNANSHIRE COUNCIL**  
**(MENSTRIE PLACE, MENSTRIE)**  
**(TEMPORARY PROHIBITION OF DRIVING, PARKING AND LOADING) ORDER 2025**

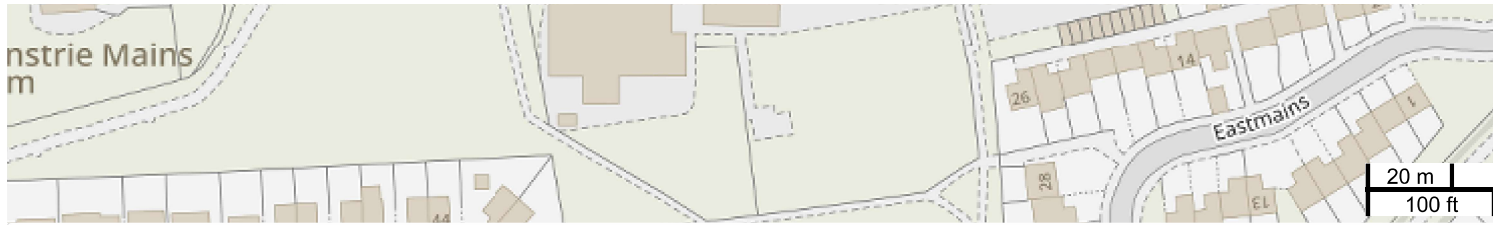
This is the plan referred to in The Clackmannanshire Council (Menstrie Place, Menstrie) (Temporary Prohibition of Driving, Parking and Loading) Order 2025.

Made by Clackmannanshire Council on 11<sup>th</sup> March 2025.

Kevin Wells  
**Strategic Director (Place)**

Clackmannanshire Council  
Kilncraigs  
ALLOA  
FK10 1EB





TTRO2025\_014 Menstrie Place, Menstrie - Road Closure

