



## **BURNSIDE FARM AND OCHIL ROAD, ALVA**

### **NOTICE OF EMERGENCY TEMPORARY ROAD CLOSURE ORDER 2020**

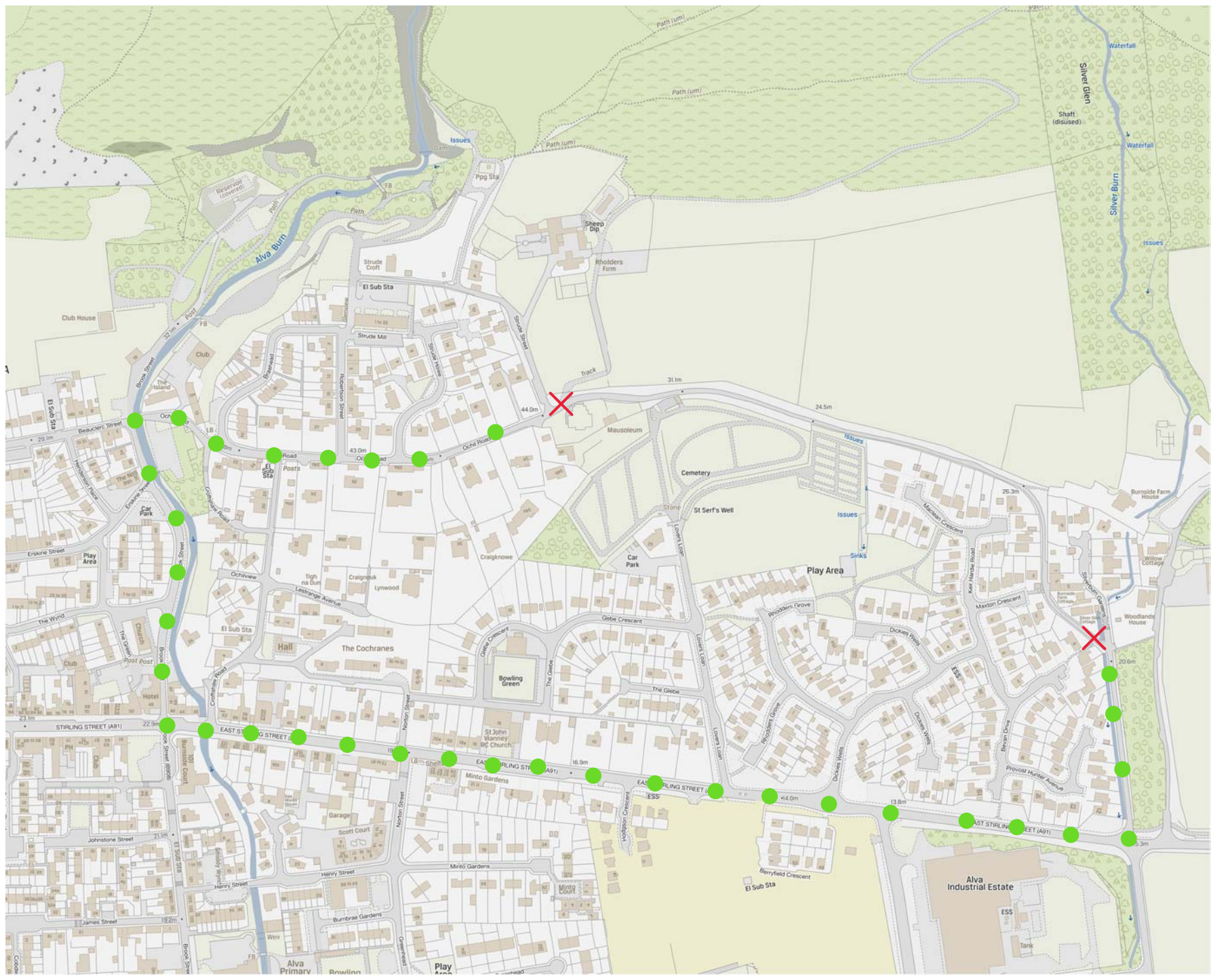
NOTICE IS HEREBY GIVEN that, in terms of Section 14 of the Road Traffic Regulation Act 1984 (as amended), the section of road described in the Schedule attached hereto, will be closed to traffic from 1400 hours on Thursday 6<sup>th</sup> August 2020 until 1700 hours on Friday 25<sup>th</sup> September 2020. The emergency closure is necessary due to a dangerous bridge structure and the safety of the public.

Pete Leonard  
**Strategic Director (Place)**

Dated this Tenth Day of August Two Thousand and twenty

Clackmannanshire Council  
Kilncraigs  
Greenside Street  
Alloa, FK10 1EB

<b>SCHEDULE</b>	
<b>List of Roads</b>	<b>Section of road over which a temporary road closure is applicable from 1400 hours on Thursday 6<sup>th</sup> August 2020 until 1700 hours on Friday 25<sup>th</sup> September 2020.</b>
Burnside Farm Road, Alva	From its junction with Silverburn Gardens westwards for a distance of 318 metres of thereby to Ochil Road.
Ochil Road, Alva	From where it meets Burnside Farm Road westwards for a distance of 282 metres or thereby to the junction of Strude Street.
Alternative Route	Via A91 Stirling Street to Brook Street to Ochil Road and vice versa.



- X Closure Points
- Diversion

### Burnside Farm Road and Ochil Road, Alva

Scale: 1:0  
 Paper size: A4  
 Date: 06 August 2020  
 Ref: QGIS.qgs



Development & Environment  
 Kilncraigs  
 Greenside Street  
 Alloa FK10 1EB

Tel: 01259 450 000  
[roads@clacks.gov.uk](mailto:roads@clacks.gov.uk)

© Crown copyright and database rights 2020 Ordnance Survey 100020783. You are permitted to use this data solely to enable you to respond to, or interact with, the organisation that provided you with the data. You are not permitted to copy, sub-licence, distribute or sell any of this data to third parties in any form.

