
Report to Education, Sport and Leisure Committee

Date: 22 November 2012

Subject: Scottish Qualifications Authority – 2012 Individual Schools

Report by: Head of Education

1.0 Purpose

- 1.1. The purpose of this report is to provide the Education, Sport and Leisure Committee with the 2012 pre-appeal SQA examination results for Clackmannanshire schools.
- 1.2. The appendix to the report provides an overview of examination performance trend for Clackmannanshire Council over the last 5 years and the performance data for each of the secondary schools. (appendix 1)

2.0 Recommendations

- 2.1. It is recommended that the Committee note, comment on and challenge the performance of Clackmannanshire schools in the SQA Examinations, 2011/12.

3.0 Considerations

- 3.1. Young people undertook a diet of national examinations in the spring term 2012.
- 3.2. Examination performance is measured nationally against a number of key measures:

English and Mathematics Level 3 (Standard Grade Foundation level)

5 or more awards at Level 3 (Standard Grade Foundation level)

5 or more awards at Level 4 (Standard Grade General level)

5 or more awards at Level 5 (Standard Grade Credit level)

1 or more awards at Level 6 (Higher)

3 or more awards at Level 6 (Higher)

5 or more awards at Level 6 (Higher)

1 or more awards at Level 7 (Advanced Higher)

- 3.3. Overall in session 2011/12 there has been improvement in almost all measures. The most positive increase came in the number of young people in S5 achieving 1 or more Highers and achieving 3 or more Highers. The only measure which showed a decrease in performance was in the number of young people in S4 achieving 5 or more at level 5. This will be an area of focus for improvement for schools and Link Officers. Whilst overall performance has improved, more needs to be done to further raise levels of attainment.
- 3.4. The performance for each of our establishments is outlined in Appendix 1. This data includes comparator information for each establishment.
- 3.5. Alloa Academy reported good performance across the board for 2012 exam results. S6 performance was high, while S4 and S5 was more varied. S4 and S5 boys, however, achieved very high results across all measures this year. S6 performance was extremely good again in 2012 with the majority of measures reporting their highest or second highest results since 2001 and was well above comparator schools' averages. Art and Design, Music, Administration and Computing continued to demonstrate strong performance.
- 3.6. Alva Academy reported extremely high performance across all measures in S4, S5 and S6 this year. All measures were above or well above both national and comparator schools averages and nearly all reported their highest or second highest results since 2001. Chemistry, Modern Studies, Art and Design, Product Design and Graphic Communication have been strong performing subjects in Alva Academy over the last few years.
- 3.7. Lornshill Academy showed an improvement in performance from last year; across the majority of measures in 2012. Standard Grade Foundation and Access 3 performance in S4 improved noticeably this year and placed Lornshill Academy well above their comparator schools. S5 boys, results this year, were all higher than their comparators. The majority of S6 girls results were all much higher. Mathematics, Biology, Art and Design, Business Management and Administration have all reported significantly strong results in Lornshill Academy over the last few years.

4.0 Sustainability Implications

- 4.1. The paper has no sustainability implications.

5.0 Resource Implications

- 5.1. *Financial Details*
- 5.2. There are no financial implications.
- 5.3. Finance have been consulted and have agreed the financial implications as set out in the report.

N/A

5.4 Staffing

There are no staffing implications arising from this report.

6.0 Exempt Reports

6.1. Is this report exempt? Yes (please detail the reasons for exemption below) No
N/A

7.0 Declarations

The recommendations contained within this report support or implement our Corporate Priorities and Council Policies.

(1) **Our Priorities** (Please tick)

- | | |
|--|-------------------------------------|
| The area has a positive image and attracts people and businesses | <input type="checkbox"/> |
| Our communities are more cohesive and inclusive | <input type="checkbox"/> |
| People are better skilled, trained and ready for learning and employment | <input checked="" type="checkbox"/> |
| Our communities are safer | <input type="checkbox"/> |
| Vulnerable people and families are supported | <input type="checkbox"/> |
| Substance misuse and its effects are reduced | <input type="checkbox"/> |
| Health is improving and health inequalities are reducing | <input type="checkbox"/> |
| The environment is protected and enhanced for all | <input type="checkbox"/> |
| The Council is effective, efficient and recognised for excellence | <input type="checkbox"/> |

(2) **Council Policies** (Please detail)

8.0 Equalities Impact

8.1 Have you undertaken the required equalities impact assessment to ensure that no groups are adversely affected by the recommendations?

Yes No

9.0 Legality

9.1 The purpose of the paper is to note progress in schools' performance.

10.0 Appendices

10.1 Appendix: 1: Clackmannanshire Council Establishment SQA 2012 Pre-Appeal Results

10.2 Appendix 2: Alloa Academy SQA 2012 Pre-Appeal

10.3 Appendix 3 Alva Academy SQA 2012 Pre-Appeal

10.4 Appendix 4 Lornshill Academy SQA 2012 Pre-Appeal


11.0 Background Papers

None

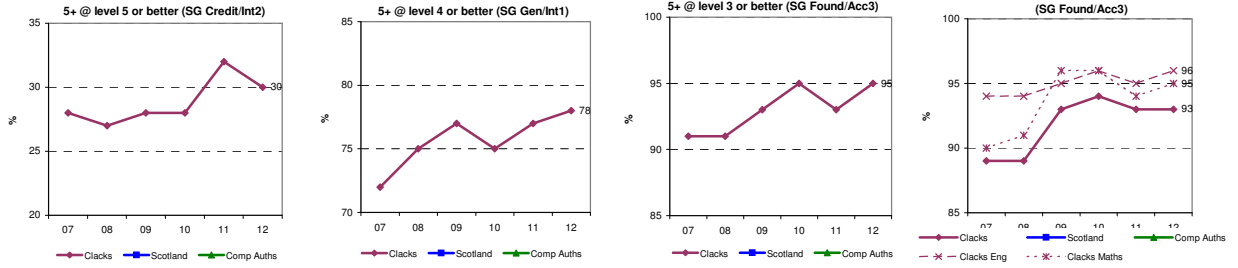
Author(s)

NAME	DESIGNATION	TEL NO / EXTENSION
Alan Milliken	Assistant Head of Education	452432

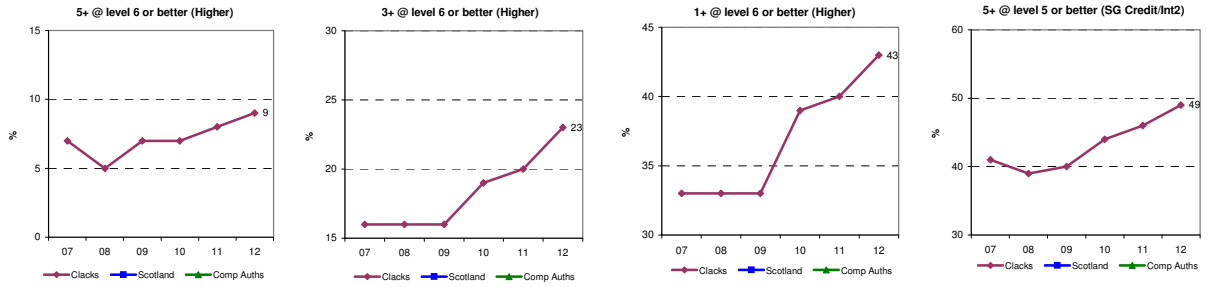
Approved by

NAME	DESIGNATION	SIGNATURE
Belinda Greer	Head of Education	
Elaine McPherson	Chief Executive	

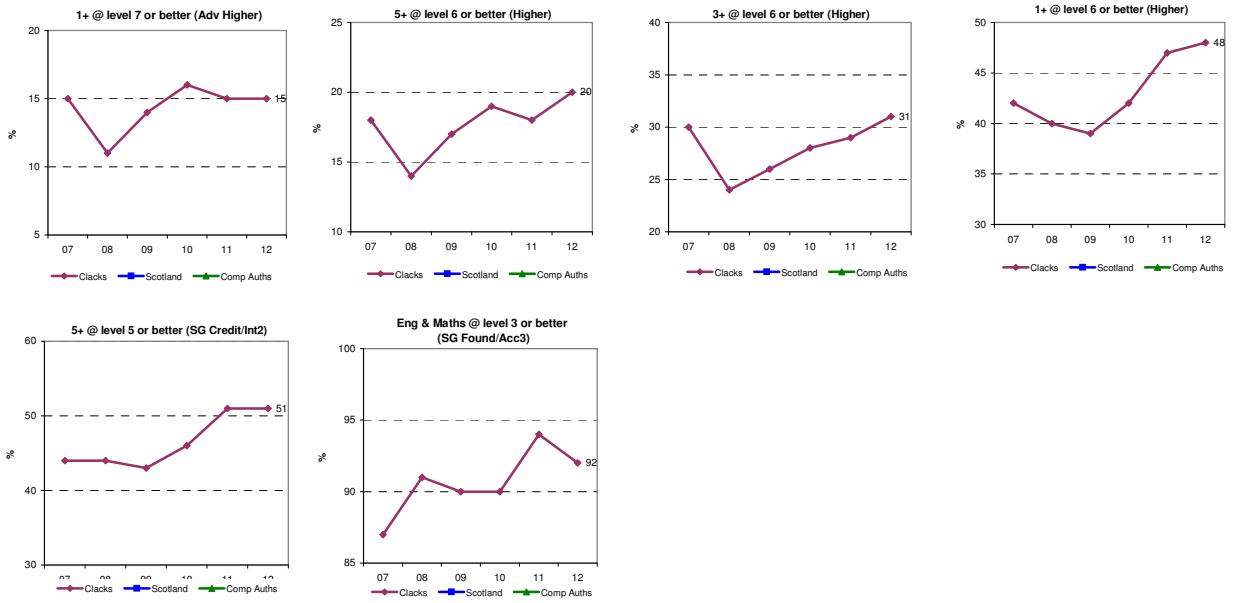
By the end of S4



By the end of S5

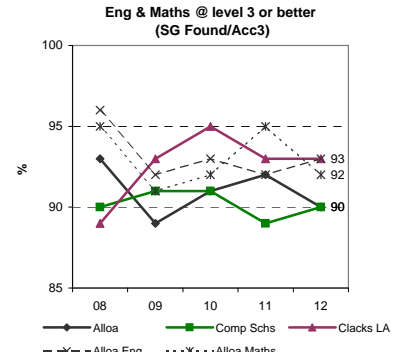
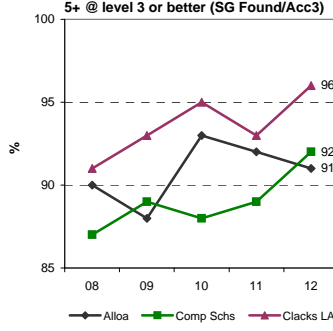
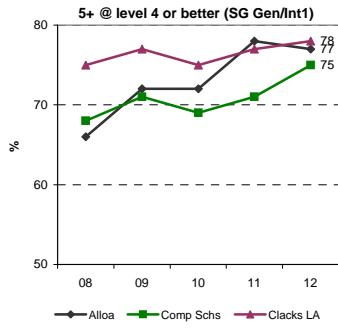
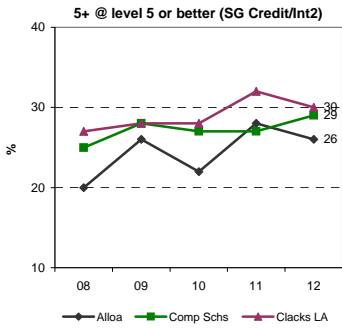


By the end of S6

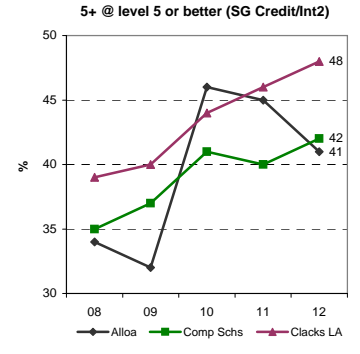
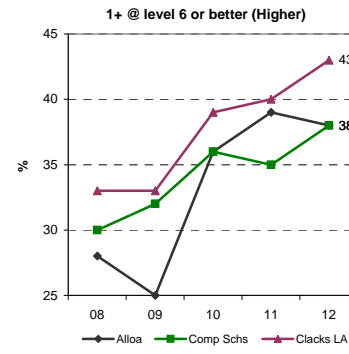
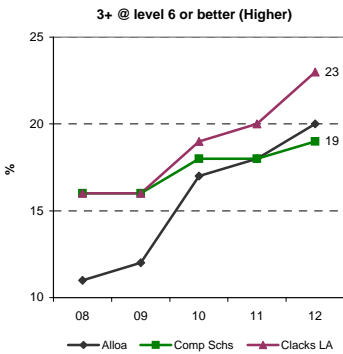
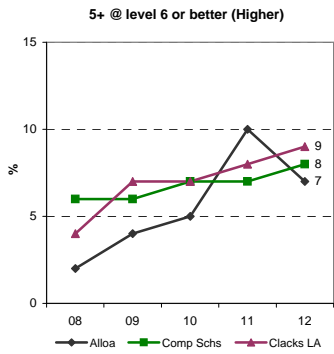


Alloa Academy: SQA 2012 pre-appeal results

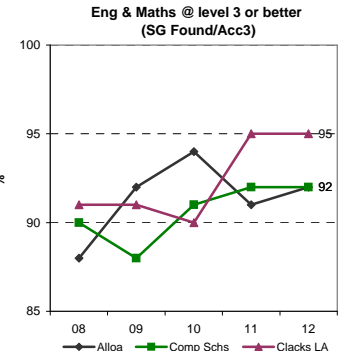
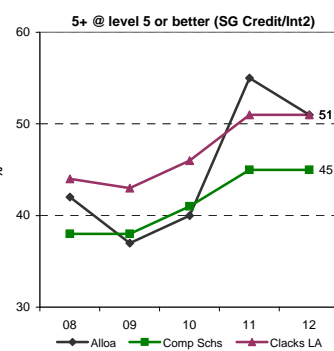
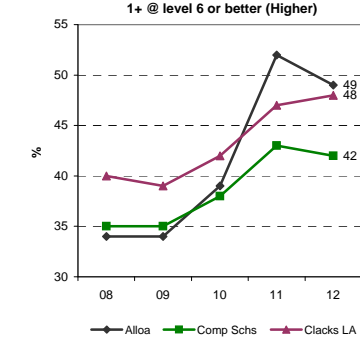
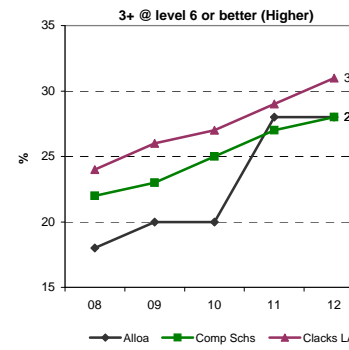
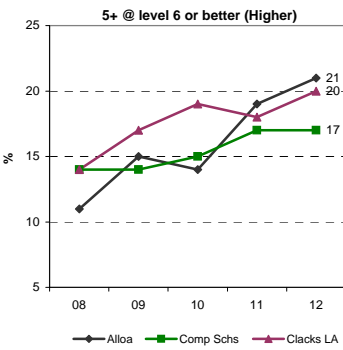
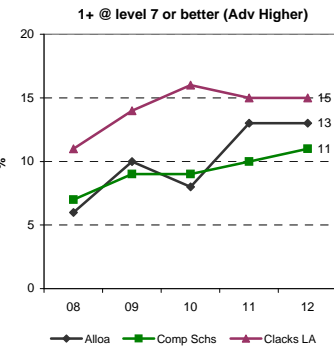
By the end of S4



By the end of S5



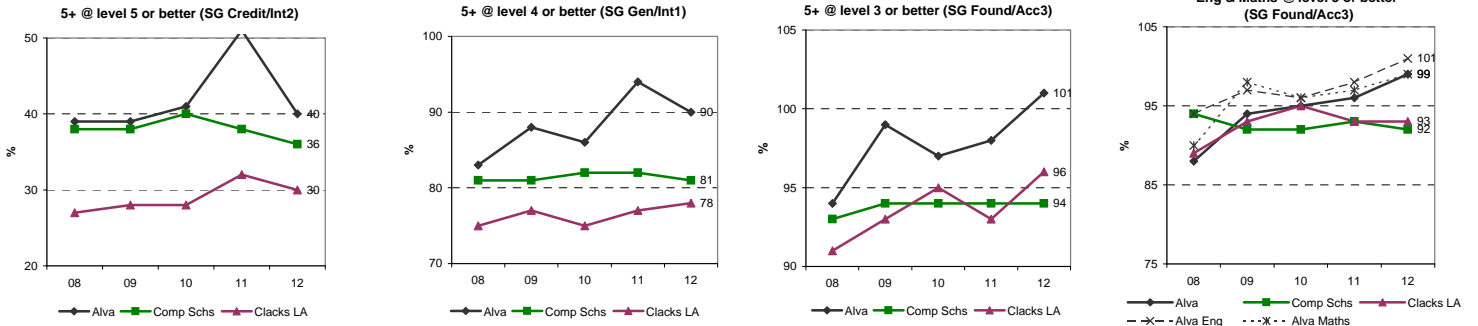
By the end of S6



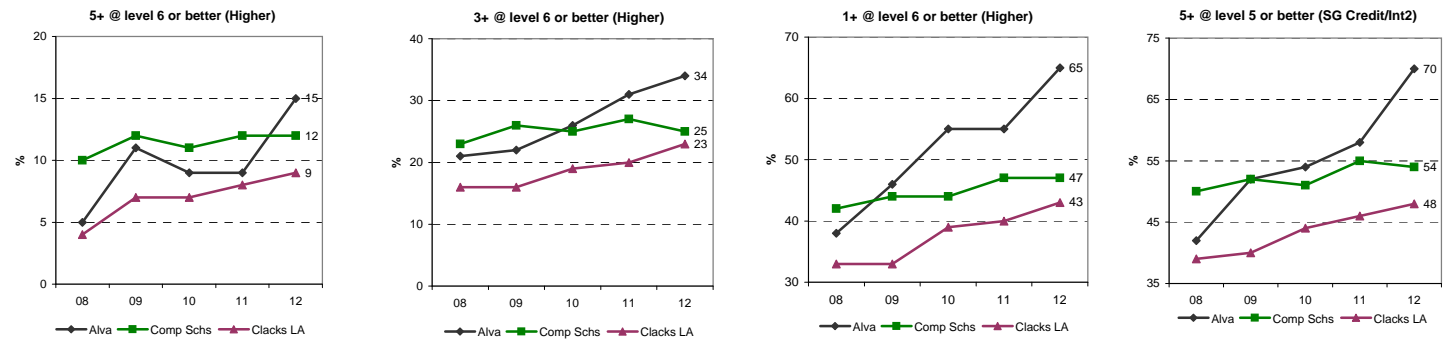
Alva Academy: SQA 2012 pre-appeal results

APPENDIX 3

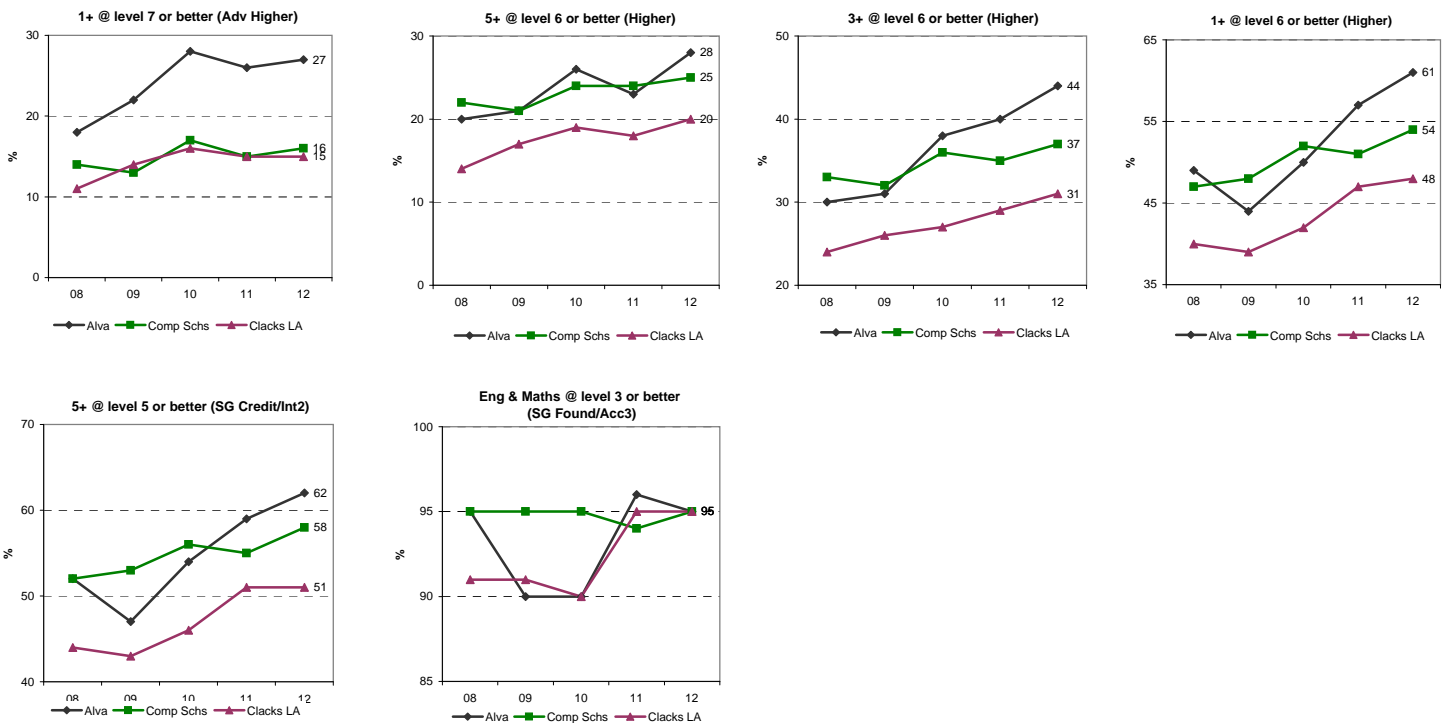
By the end of S4



By the end of S5



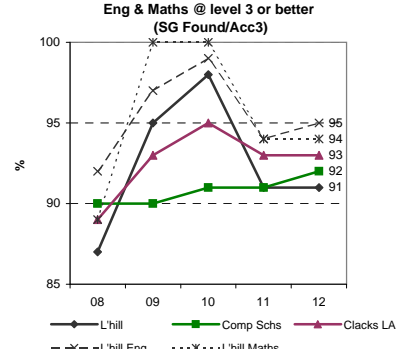
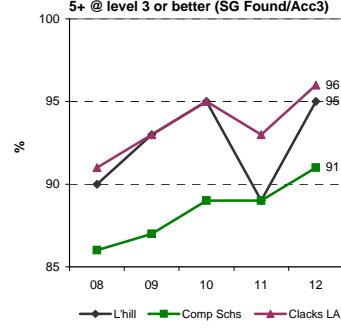
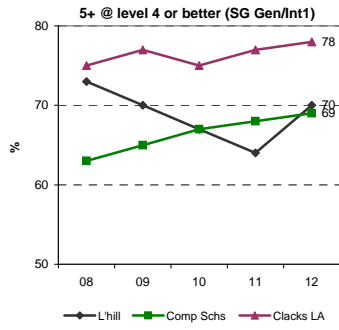
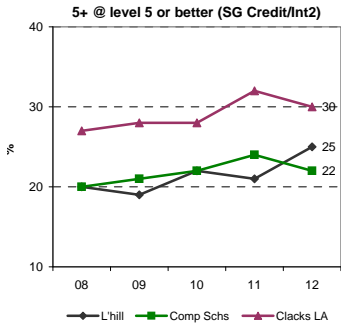
By the end of S6



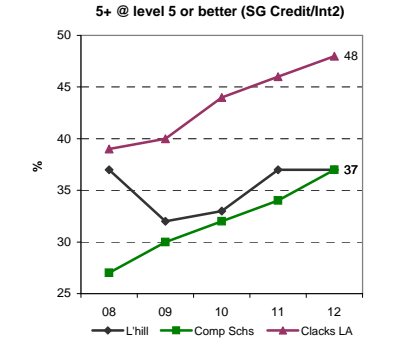
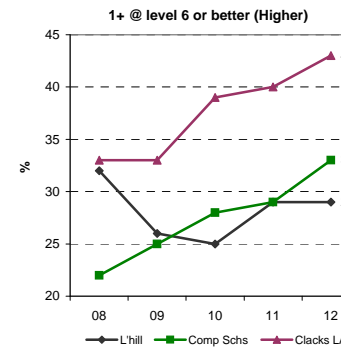
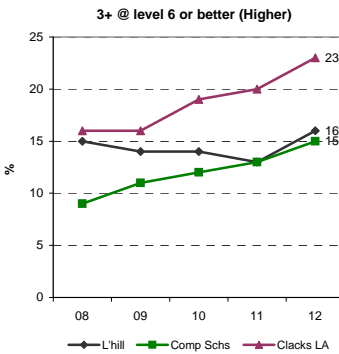
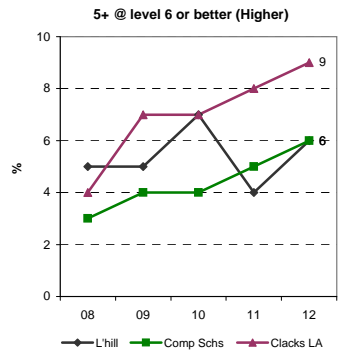
Lornshill Academy: SQA 2012 pre-appeal results

APPENDIX 4

By the end of S4



By the end of S5



By the end of S6

