
Report to: Housing Health and Care Committee

Date: 25 October 2012

Subject: Early Years Framework/Model for Early Co-ordinated Intervention for Vulnerable Families with Children aged 0-5 years - 'Children and Families Assessment & Support Service'.

Report by: Acting Head of Social Services /Chief Social Work Officer

1.0 Purpose

- 1.1. In December 2011 the Council approved the development of a new model of service delivery of Early Co-ordinated Intervention for working with Vulnerable Families with Children aged 0-5 years.
- 1.2. This report updates committee on progress with the Early Years Framework and Model for Early Co-ordinated Intervention for Vulnerable Families with Children 0-5 years.
- 1.3. The funding for the model was approved at the Council Budget meeting in February 2012 and the work with Trade Unions, partner services and staffing was commenced. All networking and IT is in place. IT development team are on board, linked to GIRFEC implementation. Business support reviewed in line with new service delivery model. A programme of targeted staff training is in place. The updated implementation plan and model are attached as an appendix to this report. It sets out a targeted framework detailing the National and Local picture. It is a key document which sits within the Children and Young People's Integrated Services Plan up to 2013.

2.0 Recommendations

- 2.1. It is recommended that the Committee:
 - a) Notes the work and progress achieved by the service to date.
 - b) That the Framework and model have been discussed with the Care Inspectorate in a recent unannounced inspection. The movement to the new model of working has been seen by the Care Inspectorate a very positive step forward in the delivery of preventative and targeted services for our families with young children aged 0-5 years. Extract taken from Care Inspectorate Inspection Report dated 6 September 2012.

What the service does well

"The centre is moving forward with the planned changes to better reflect the needs of children and families in the community. They provide a range of services including, Outreach, Assessment and Group Care. They are working closely with other agencies such as NHS and Social Work to support families access services when they need them and children and families continue to receive very good quality support from a qualified, experienced and knowledgeable staff team"

3.0 Considerations

3.1. In December 2009 the Scottish Government launched the Early Years Framework. With the framework the Scottish Government identified 10 key areas for Local Authorities and their partners to work on the delivery of "transformation change". These were identified as:

- a) A coherent approach,
- b) Helping children, families and communities to secure outcomes for themselves,
- c) Breaking cycles of poverty, inequality and poor outcomes in and through the early years,
- d) A focus on engagement and empowerment of children, families and communities,
- e) Using the strength of universal services to deliver prevention and early intervention,
- f) Putting quality at the heart of service delivery,
- g) Services that meet the needs of children and families,
- h) Improving outcomes and children's quality of life through play,
- i) Simplifying and streamlining delivery,
- j) More effective collaborations.

3.2. Since March 2012, the Early Years/Early Intervention Working Group has continued to meet. This multi-disciplinary group is made up of representatives from Central Scotland Police, NHS Forth Valley, Integrated Mental Health Services, Social Work, Education/ Psychological Services, Housing, Third Sector and the Housing Health and Care Portfolio Holder. In making decisions within the group we have continued to focus on the future of services supporting vulnerable families with children aged 0-5 years, there has been continued focus on ensuring we have the balance correct between universal versus specialised provision and ensuring that services make the most effective use of existing resources.

- 3.3. The Working Group have continued to agree that we maintain the following principles: Consistency of approach, balance between prevention and early intervention, build on best practice.

Underpinning the work is the key principle of building on success, breaking the cycle of family poverty and reducing failure.

- 3.4. The Early Years Service in Clackmannanshire currently provides a range of support services through a range of interventions with families.
- 3.5. The Council continues to work closely with a range of partners in the health and voluntary sectors providing a range of services to meet the ongoing needs of our vulnerable families with young children aged 0-5 years and those who are affected by family substance misuse and other chronic problems.

Working practically with families and parents in their homes and home type settings are key areas of work in improving and changing parenting behaviours. Working much closer with fathers also requires to be developed further.

- 3.6. A range of policy documents highlight the need for positive parenting work as a priority for our Community Planning Partnership (Alliance) and the Community Health Partnership. Improving partnership working to support and engage the most vulnerable families to increase their knowledge and skills for parenting is a core objective in a range of National Strategic documents. These include; "Getting it Right for Every Child" (GIRFEC) and Health for all Children Version 4 (HALL4).
- 3.7. The need to identify and provide early intervention and include people in the process are explicit objectives in the Clackmannanshire Single Outcome Agreement. Within Clackmannanshire our delivery of the Early Years Framework continues to directly support those key objectives. The service continues to consult and work closely with parents and the wider community as we move forward in determining with them what other practical supports parents would find helpful and of most benefit to them.
- 3.8. The model delivers services from one Local Authority Family Centre building located in Alloa, with a satellite building in Tullibody, whilst using a range of community and outreach services including direct work in the family home and a home type setting. From December 2012 the Tillicoultry Community HUB building is scheduled to be open and the service will deliver a range of supports for families from this location including group care, parenting and young parents support services. This will ensure that Clackmannanshire continues to deliver appropriate services council-wide.
- 3.9. Co-ordination of services remains the key element in the way forward. The model reflects GIRFEC principles and good practice, takes into account research findings and policy development, makes effective use of existing resources and strengthens partnership working among key services in Clackmannanshire.
- 3.10. The service continues to focus on core and essential services, placing emphasis on building community capacity, resilience and reducing cycle of dependency and culture of poverty. Improving outcomes for our children and

families is a fundamental objective for all our services and partnership organisations. By ensuring our children and families get the help they need when they need it, longer term will reduce the intergenerational cycle of dependency in Clackmannanshire. Services will improve outcomes for our most vulnerable by the consistent adoption of common frameworks.

- 3.11. We continue to be aware that a variety of different services and interventions are required to address the very often complex needs of families and there are multiple risk factors that impact on children's outcomes. The continued aim for our services with children, particularly under five years is to support children and their families to remain with the universal services wherever possible bringing in targeted or specialist provision only where appropriate. To deliver on this objective the service delivers services and is staffed around three core functions.
- 3.12. Existing Family Centre staff deliver the services across the core function areas identified, Clackmannanshire wide.

Access to a Clinical Psychologist post remains a key area of service development, this is particularly important in some of the very serious and high tariff families that the service works with. Access to this area of service will in particular assist when we are looking at parenting capacity and court issues. We are currently working with our partners in NHS Forth Valley on the recruitment of this post and hope to have a full time experienced Clinical Psychologist in post in the near future.

Access to a range of therapeutic interventions including intensive play therapy on a directed basis and through staff training continue to enhance the level of knowledge we have as a service as to particular complex behaviours in some of our most high tariff families. These type of interventions are purchased as required to meet the needs of particular children as part of their individual plan.

The family support worker post provides additional practical support to parents linked in to supervised contact, this post sits within the long term childcare team until March 2013.

The Enhanced Social Worker posts focus on families where permanency planning for young children has been identified through a programme of intensive parenting assessments. To date we have been unable to recruit to these two posts due to applications received not meeting the required criteria. Work on recruitment to these posts remains ongoing with our HR service.

- 3.13. Core Functions focus on three specific areas:

a) Assessment and Contact Service

Assessment and contact service concentrates on working with families in an intensive and highly focussed way. This area of service is targeted at families who require intensive interventions to support their parenting capability. The families who access this area of service are referred from a range of services and are often known to a range of statutory services who are working together with the family. Often the children are accommodated by the Local Authority and assessment work is undertaken to determine the suitability of the children

to return to their parents and family homes. Intensive work with the family is initially undertaken in a "home type setting" prior to moving the work into the family home as appropriate. The Service has recently been doing intensive, focussed assessment work with families in the Lodge House. This is an important step forward and improvement in how we undertake our assessment work with families. Providing a realistic "home setting" in which to assess parental capacity. At present, having one house facility is sufficient to meet the current need for this type of assessment. This will continue to be monitored over the coming year to ensure we have sufficient resources to meet need.

The high tariff contact element of the service looks at where parents have access to their children through social work on a "supervised" capacity and how parents appropriately meet their child(s) needs. Contact is a planned period of time where parents are observed in a range of settings with their own child. Contact is also assessed as part of a child and family plan. An additional new room for supervised contact has been developed within the Alloa Family Centre building to support this.

b) Outreach (including a developmental role in defining the parenting support strategy and supporting communities to define and meet their own needs)

Outreach services are a range of work done with and to support families in a much wider way across the County. Outreach work can be done in a family home where families require practical support, this can for example take the form of very practical parenting skills, including the skills required to run a family home, cooking skills, hygiene and budgeting. This may involve other services like Money Advice and Housing Support services. Outreach also includes the service running a range of parenting groups across communities in Clackmannanshire. This currently includes baby groups/baby massage, young parents groups, breast feeding support groups and toddler services. Groups are run by qualified Early Years and Family workers in partnership with colleagues from e.g. Third Sector services and Health service, this includes Midwives and Health Visitors.

c) Group Care as part of a planned package

Children are placed in group settings as part of a planned package of support. This can include child development issues or for the parent attending support groups, programmes include overcoming anxiety, self esteem, depression, controlling stress and anger management.

d) Included within the new model, the service links closely with the long term and intake childcare teams, staffing will include the provision of a Clinical Psychologist, Family Support Worker and two Enhanced Social Worker posts.

4.0 Sustainability Implications

- 4.1. The prevention and early intervention service detailed in the appended updated Early Years Framework Implementation plan will, once fully embedded have a positive effect on social and economic issues, whilst breaking down the barriers to the long term intergenerational issues that are a problem within Clackmannanshire.

- 4.2. There continues to remain strong evidence of a positive economic social return from investment in early years. By spending money on services and programmes that are high quality, preventative, targeted and based on sound research and effective methodology we may produce financial benefits in future years.

5.0 Resource Implications

5.1. *Financial Detail-*

The cost to deliver the services Clackmannanshire wide including a range of outreach support with partnership services and Third Sector remains unchanged. The budget allocated at February 2012 Council meeting is £1,119, 818. The budget requirements, as outlined in 3.12 and 3.13 above are contained within the existing budget. Any additional costs emanating from the strategy would require approval of the Council. The cost of delivering the strategy continues to be accommodated within existing budget provision.

- 5.2. The full financial implications of the recommendations are set out in the report. This includes a reference to full life cycle costs where appropriate. Yes X
- 5.3. Finance have been consulted and have agreed the financial implications as set out in the report. Yes X

5.4. *Staffing*

Existing Family Centre staff deliver the services across the core function along with a range of interventions and the recruitment of additional specialist staff.

6.0 Exempt Reports

- 6.1. Is this report exempt? Yes (please detail the reasons for exemption below) No X

7.0 Declarations

The recommendations contained within this report support or implement our Corporate Priorities and Council Policies.

- (1) **Our Priorities** (Please double click on the check box)

The area has a positive image and attracts people and businesses	<input type="checkbox"/>
Our communities are more cohesive and inclusive	X
People are better skilled, trained and ready for learning and employment	X
Our communities are safer	X
Vulnerable people and families are supported	X
Substance misuse and its effects are reduced	X
Health is improving and health inequalities are reducing	X

The environment is protected and enhanced for all
 The Council is effective, efficient and recognised for excellence

(2) **Council Policies** (Please detail)

8.0 Equalities Impact

8.1 Have you undertaken the required equalities impact assessment to ensure that no groups are adversely affected by the recommendations?
 Yes No

9.0 Legality

9.1 It has been confirmed that in adopting the recommendations contained in this report, the Council is acting within its legal powers. Yes

10.0 Appendices

10.1 Please list any appendices attached to this report. If there are no appendices, please state "none".

Appendix 1 Early Years Framework - Clackmannanshire Local Implementation Plan Update October 2012

11.0 Background Papers

11.1 Have you used other documents to compile your report? (All documents must be kept available by the author for public inspection for four years from the date of meeting at which the report is considered)

Yes (please list the documents below) No
 • Report to Council 15/12/11 'Early Years Framework/Model for Early Co-ordinated Intervention for Vulnerable Families with children aged 0 - 5 years'
 • Clackmannanshire Integrated Children's Services Plan 2010-2013

Author(s)

NAME	DESIGNATION	TEL NO / EXTENSION
Sharon Evenden	Manager Early Years	01259 452470

Approved by

NAME	DESIGNATION	SIGNATURE
Val de Souza	Acting Head of Social Services/CSWO	Signed: V de Souza
Elaine McPherson	Chief Executive	Signed: E McPherson

Executive Summary

"It is during our very earliest years and even pre-birth that a large part of the pattern for our future adult life is set."

Source: Early Years Framework

What are our key drivers?

- National Early Years Framework
- Single Outcome Agreement
- GIRFEC
- Children and Young People's Integrated Services Plan

What the Early Years framework will mean in practical terms:

For Services

- A strategic vision for children at Community Planning level. The statutory Integrated Children's Services Plan (ICSP) is an integral part of the community plan;
- Services that are not traditionally seen as children's services are asked to consider the impact of the services on young children. Services such as childcare, pre-school education and support for parents are seen as core components of successful delivery of the framework.
- Universal services are strengthened to improve early identification and intervention to better meet the needs of vulnerable children and families;

For Families

- Parents and carers receive the support and advice they need to be the best parents they can be for their children, including access to intensive family support for those who need it;
- The importance of the home learning environment in improving educational outcomes for children is recognised. The importance of play is recognised;

For the Workforce

Members of the early years workforce across the various agencies receive support and training to enable them to engage effectively with families and contribute to the early identification and early intervention

Local Model

Key Principles of Early Coordinated Intervention With Vulnerable Families With Children Aged 0-5

- Focus and targeted improvements in the life chances of vulnerable families and their children
- Identification and appropriate levels of support for those families as early as possible
- Re-provision of services to support the most vulnerable of families Clackmannanshire wide.
- Change of delivery of services using current resources to maximum effect. Delivery will be robust, appropriate and supportive of the needs of families in Clackmannanshire
- Services working closely together in a co-ordinated way to identify families at the earliest point possible.
- Consistent with the recommendations in "Joining the Dots", Getting it Right for Every Child (GIRFEC) and the Early Years Framework.

CONTENTS

Executive Summary

		Para	Page
SECTION 1	What is it about?	1	
SECTION 2	Background	1.1	1
	10 Elements of Transformational Change	1.2	1
	What the Early Years framework will mean in practical terms	1.3	2
	What are our needs?	2	
	Deprivation of children in Clackmannanshire	2.1	3
	Child Protection Statistics for 2009/10	2.2	4
	Referrals	2.3	4
	Registrations	2.4	6
SECTION 3	Teenage Pregnancy	2.5	11
	What are the key local drivers?	3	
	Single Outcome Agreement	3.1	12
	Children & Young People's Integrated Services Plan	3.2	13
SECTION 4	GIRFEC	3.3	14
	What do we need to do?	4	
	What Works?	4.1	15
	What Outcomes Do We Want To Achieve?	4.2	16
	What Should A Clacks Model Include?	4.3	18
SECTION 5	Local Delivery Model	4.4	19
	How Are We Going To Monitor For Success?	5	
	Indicators	5.1	22
APPENDICES			
A	Glossary		23
B	Early Years Resources		24
C	Comments & Suggestions Form		25

1.0 WHAT IS IT ABOUT?

The national Early Years Framework focuses on preventing problems and intervening early and effectively, to correct problems before they have a long term effect on life chances for the child and their family. This document expands on the Framework which sits within the Children & Young People's Integrated Services Plan 2013¹, and updates on progress and information since the original document was approved by Council in December 2011.

1.1 Background

[The Early Years Framework](#)² was launched in 2008 and updated in 2011: [Early Years Framework - Progress So Far](#)³. The aim is to break the negative cycles through early and effective intervention. Reinforced by another key document [Joining the Dots](#)⁴ 2011.

"It is during our very earliest years and even pre-birth that a large part of the pattern for our future adult life is set. "

Source: Early Years Framework

There is a wealth of evidence indicating that the earliest years of life are crucial to a child's development and future life chances. It is increasingly evident that inequalities in health, education and employment opportunities are passed from one generation to another.

"This will mean a shift from intervening only when a crisis happens, to prevention and early intervention. In turn, that will mean providing a supportive environment for children and the earliest possible identification of any additional support that may be required."

Source: Early Years Framework

The Early Years Framework sets out 10 elements of transformational change, and covers the period from pre-birth to age 8. Key to achieving transformational change is the re-aligning of services towards early intervention as opposed to crisis management. It is also vital that all relevant services work together to identify and meet the needs of individual children, in line with the principles of [Getting it right for every child](#)⁵

1.2 10 Elements of Transformational Change

1. A coherent approach
2. Helping children, families and communities to secure outcomes for themselves
3. Breaking cycles of poverty, inequality and poor outcomes in and through early years
4. A focus on engagement and empowerment of children, families and communities
5. Using the strength of universal services to deliver prevention and early intervention
6. Putting quality at the heart of service delivery
7. Services that meet the needs of children and families
8. Improving outcomes and children's quality of life through play
9. Simplifying and streamlining delivery
10. More effective collaborations

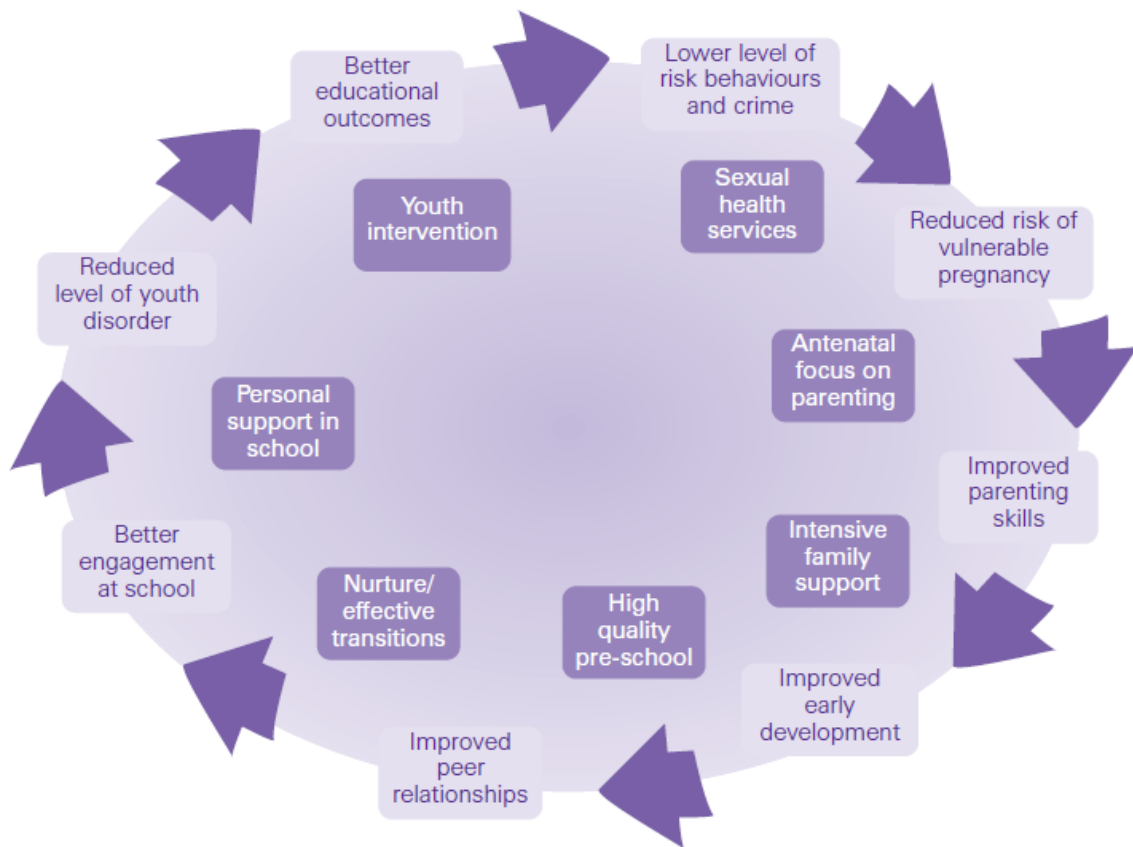
¹ <http://www.clacksweb.org.uk/children/childrenservicesplanning>

² <http://www.scotland.gov.uk/Publications/2009/01/13095148/0>

³ <http://www.scotland.gov.uk/Publications/2011/01/13114328/0>

⁴ <http://www.scotland.gov.uk/Resource/Doc/343337/0114216.pdf>

⁵ <http://www.scotland.gov.uk/Topics/People/Young-People/gettingitright>



1.3 What the Early Years framework will mean in practical terms:

For Services

- A strategic vision for children at Community Planning level, to develop a local continuum of support from pregnancy through to primary school and beyond, based on the GIRFEC methodology;
- The statutory Integrated Children's Services Plan (ICSP) is an integral part of the community plan;
- Services that are not traditionally seen as children's services are asked to consider the impact of the services on young children e.g. housing, planning, transport, addiction services;
- Universal services are strengthened to improve early identification and intervention to better meet the needs of vulnerable children and families;
- Services such as childcare, pre-school education and support for parents are seen as core components of successful delivery of the framework.

"Plans and services should be oriented around doing things **with** people rather than 'to' or 'for' them. This is critical in developing a capacity-building approach. Parents and other members of the communities should be encouraged to be active participants in early years services through community engagement, volunteering and other routes, and be given the support needed to do so."

Source: Early Years Framework Part 2

For Families

- Parents are supported from conception onwards, using the NHS Quality Improvement Scotland (NHSQIS) Pathway of Care for Vulnerable Families (0-3) if necessary, with integrated services developed in line with GIRFEC principles;
- Parents and carers receive the support and advice they need to be the best parents they can be for their children, including access to intensive family support for those who need it;
- The importance of the home learning environment in improving educational outcomes for children is recognised and the CPP looks to further develop family and community learning;
- The importance of play is recognised, both in terms of outdoor play and of encouraging parents to play with their very young children;

For the Workforce

Members of the Early Years workforce across the various agencies receive support and training to enable them to engage effectively with families and contribute to the early identification and early intervention.

2.0 What Are Our Needs?

Key Issues:

2.1 Deprivation of children in Clackmannanshire:

- the 5th highest share of population living in the 15% most deprived areas⁶
- those primary and secondary school pupils entitled and registered for a free school meal is significantly above the national average and that of comparator authorities

The links between socio-economic deprivation, poor health and poor life chances are well known. Clackmannanshire, while it includes communities of outstanding prosperity, it also has neighbourhoods whose income and employment standards sit with the poorest in Scotland.

Within the Clackmannanshire area approximately 39% of school pupils live in the three most deprived level of the Scottish Indices of Multiple Deprivation (as at Dec 2011). This compares with an overall 31% of all school pupils in Scotland in these deprivation bands. In February 2011, 25.3% of Clackmannanshire primary school pupils and 19.3% of secondary school pupils were registered for free school meals.

		09/10	10/11
% of school pupils live in the three most deprived levels	Clackmannanshire	40%	39%
	Scottish National Average	31%	31%

	2006		2007		2008		2009		2010		2011		2012	
	Primary	Secondary	Primary	Secondary	Primary	Secondary	Primary	Secondary	Primary	Secondary	Primary	Secondary	Primary	Secondary
Scotland	17.9	13.5	17.6	13.2	16.9	12.7	16.7	12.3	19.8	14.4	22.6	15.2	22.1	15.4
Clacks	23.3	16.0	21.7	15.8	20.6	15.4	20.1	16.7	23.1	18.3	25.3	19.3	25.0	19.4
East Ayrshire	21.1	15.6	19.7	15.4	18.8	14.9	19.1	13.9	24.6	17.8	32.9	18.5	25.3	17.6
Falkirk	16.8	13.4	15.8	13.2	15.2	12.5	15.9	12.1	18.9	15.0	17.3	14.6	17.6	13.3
North Lanarkshire	20.6	15.4	19.8	14.8	18.4	13.8	18.4	14.0	21.3	15.6	22.2	16.5	23.3	17.1
South Lanarkshire	17.4	14.8	16.6	14.0	15.7	12.5	15.7	12.0	20.8	16.5	24.1	16.4	21.3	15.5
West Lothian	14.8	12.0	14.5	10.6	14.4	10.9	14.1	10.6	16.8	12.2	21.8	16.5	20.8	14.6

Source: Scottish Government

⁶ SOA 09/10

2.2 Child Protection Statistics

Scottish Government has moved to a 16 month reporting period to align other figures. This means that more up to date data is not always available.⁷

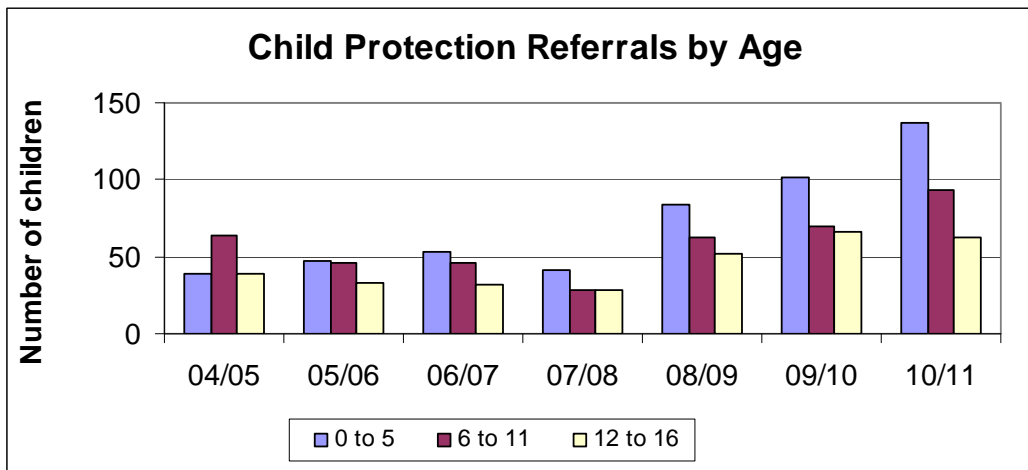
- 2010/11 **The major perpetrators of incidents leading to case conference continue to be the natural mother.**
- 2010/11 **Clackmannanshire has a higher than national average of children registered as being at risk due to physical injury.**
- 2010/11 **Compared to similar authorities, Clackmannanshire has a higher proportion of children per 1,000 population aged 0-15 years on child protection register and is well above the national rate.** Table 1.5
- 2010/11 **Trend of greater proportion of younger aged children (0-5) being placed on the CP register than older children.**

2.3 Referrals

Table 1.3	Child Protection referrals	Number children (including unborn)	Referrals resulting in a case conference	0-4 years	5-10 years	11-15 years	aged 16+.
2008/2009			46% national rate was 37%.				
2009/2010	151	238 children (35 unborn)	32% rate for Scotland as a whole was 34%	89	76	72	1
2010/2011 August 10 to July 11	189	293 children (20 unborn)	31%	126	85	81	1

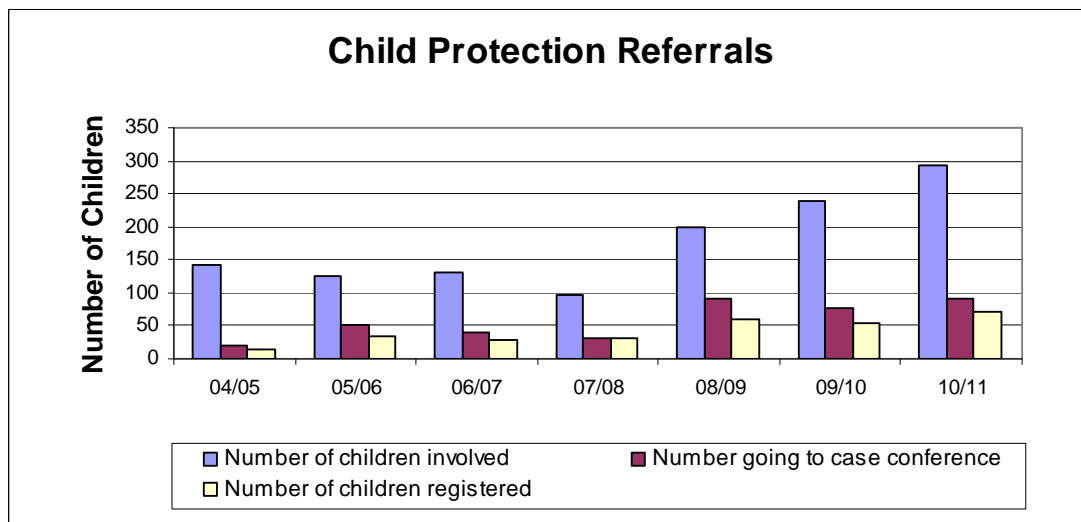
In the year August 10 to July 11, there were 189 child protection referrals involving 293 children (20 unborn). The age breakdown was 126 between 0-4 years, 85 between 5-10 years, 81 between 11-15 years and 1 aged 16+.

⁷ Reporting year has moved to an academic one (August to July) and submission dates are End Nov and Oct respectively. Publication of stats by Scottish Government for CP and LAC will likely be February 13



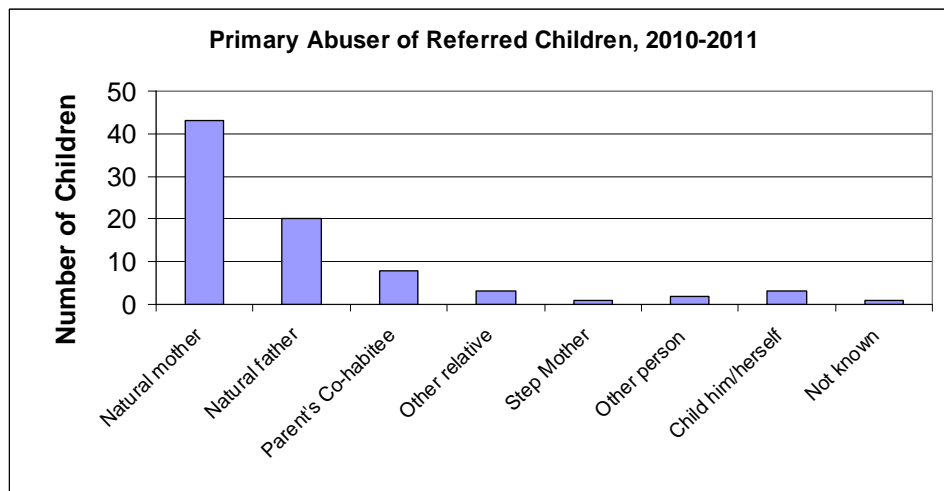
Source: Clackmannanshire Council, CFIS

During the 2010/2011 period, 31% of CP referrals resulted in an inter-agency case conference, this compares to 32% in the previous year (2009/2010).



Source: Clackmannanshire Council, CFIS

The reported incidents of children needing protection shows that in 2010/2011, the major perpetrators of incidents leading to case conference were the immediate family. For those cases going to conference 53% of the abusers were the natural mother.



Source: Clackmannanshire Council, CFIS

2.4 Registrations

Clackmannanshire has a higher than national average of children registered as being at risk due to Physical Injury.

The table below details the types of abuse which required the registration of 39 Clackmannanshire children in 2010/11. Nationally over this period the main reason for children being placed on the Child Protect Register was those suffering from physical neglect (42%), emotional abuse (27%), physical injury (20%) and sexual abuse (8%). However Clackmannanshire does not follow those trends, with physical injury (56%), physical neglect (25%), emotional abuse (17%), and sexual abuse (2%).⁸

Table 1.4	2009/10	2010/11
Major perpetrators of incidents leading to case conference	immediate family	immediate family
For those cases going to conference	over 45% of the abusers are the natural mother (can often be single parent).	53% of the abusers are the natural mother
Number registered on Child Protection Register	56	39
Children registered as being at risk due to emotional abuse	39% National average (26%)	17% National (27%)
Incidents of physical injury	28% National (22%)	56% National (20%)
Incidents of physical neglect	continue to increase 24% National (44%)	25% National (42%)
Incidents of sexual abuse	have reduced 9% National (7%)	2% National (8%)
Rate compared to similar authorities of the proportion of children per 1,000 population aged 0-15 years on child protection register in Clackmannanshire	5.9 (National 2.8) higher proportion and is well above the national rate. (Reflects high referral rate and robust response).	4.1 (National 2.8) although a reduction the figure continues to be well above the national rate and those of comparator authorities
Proportion of younger aged children (0-5) being placed on the CP register than older children	Trend of greater proportion (Reflects national trends).	Although the trend is reducing, the proportion remains the greatest. No longer able to compare with national trends.

Child Protection Registration List as at 31 at 31 July 2011

For Clackmannanshire 39 children were on the register. Compared to similar authorities, Clackmannanshire had a higher proportion of children per 1,000 population aged 0-15 and is well above the national average.

⁸ In Clackmannanshire a small change in one or two families can change figures and percentages dramatically.

Rate per 1,000 of aged 0-15 as at March with Comparator Authorities		
Table 1.5	2010 March	2011 July
Clackmannanshire	5.9	4.1
East Ayrshire	2.0	3.1
Falkirk	2.6	2.0
North Lanarkshire	1.0	1.4
South Lanarkshire	2.4	2.5
West Lothian	3.4	2.7
Scotland	2.8	2.8

source: Scottish Government

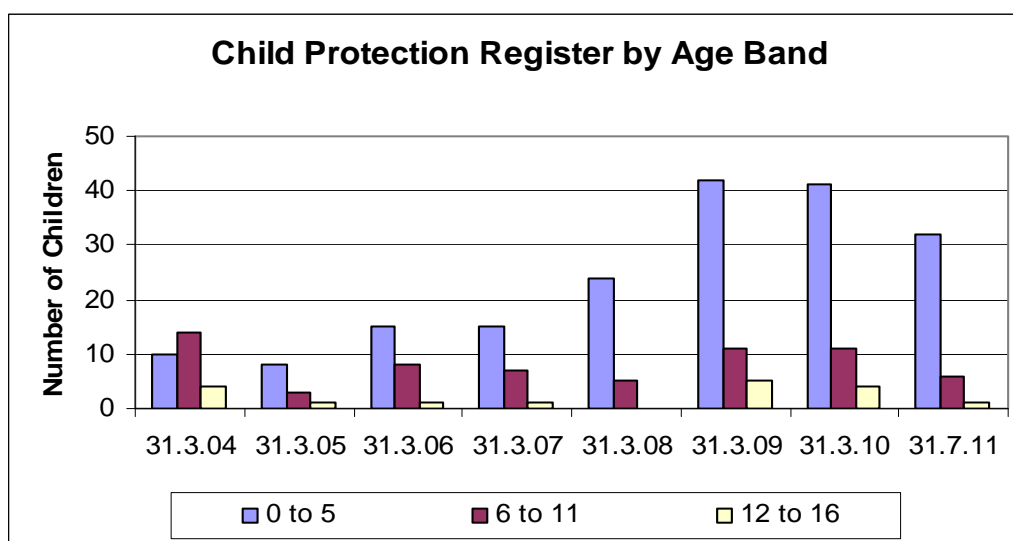
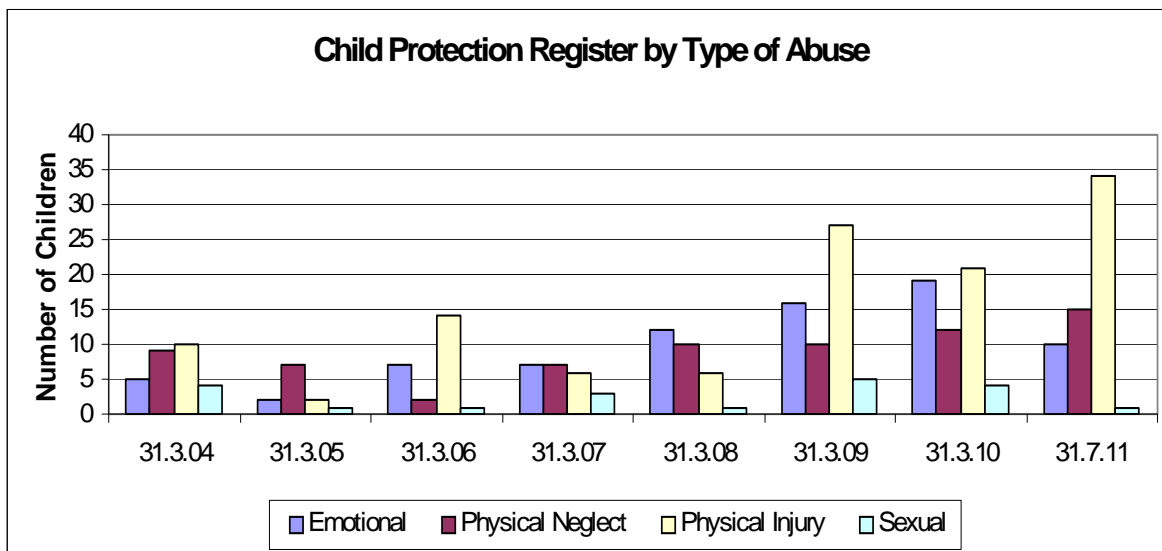


Table 1.6

Register	31.3.04	31.3.05	31.3.06	31.3.07	31.3.08	31.3.09	31.3.10	31.7.11
0 to 5	10	8	15	15	24	42	41	32
6 to 11	14	3	8	7	5	11	11	6
12 to 16	4	1	1	1	0	5	4	1
	28	12	24	23	29	58	56	39

Source: Clackmannanshire Council, CFIS

The chart above shows a higher number of younger aged children being placed on the register than older children.



Source: Clackmannanshire Council, CFIS

In this chart about type of abuse, of the four categories shown, incidents of physical injury remain high. Levels of physical neglect have increased while levels of emotional and sexual abuse appear to have reduced.

Children's Hearings

Key Issues

- **20% of children aged 0-5 are referred to reporter on grounds of lack of parental care**

Both the number of children and referrals to the reporter have reduced. This may reflect the introduction of preventative initiatives and early intervention work around GIRFEC.

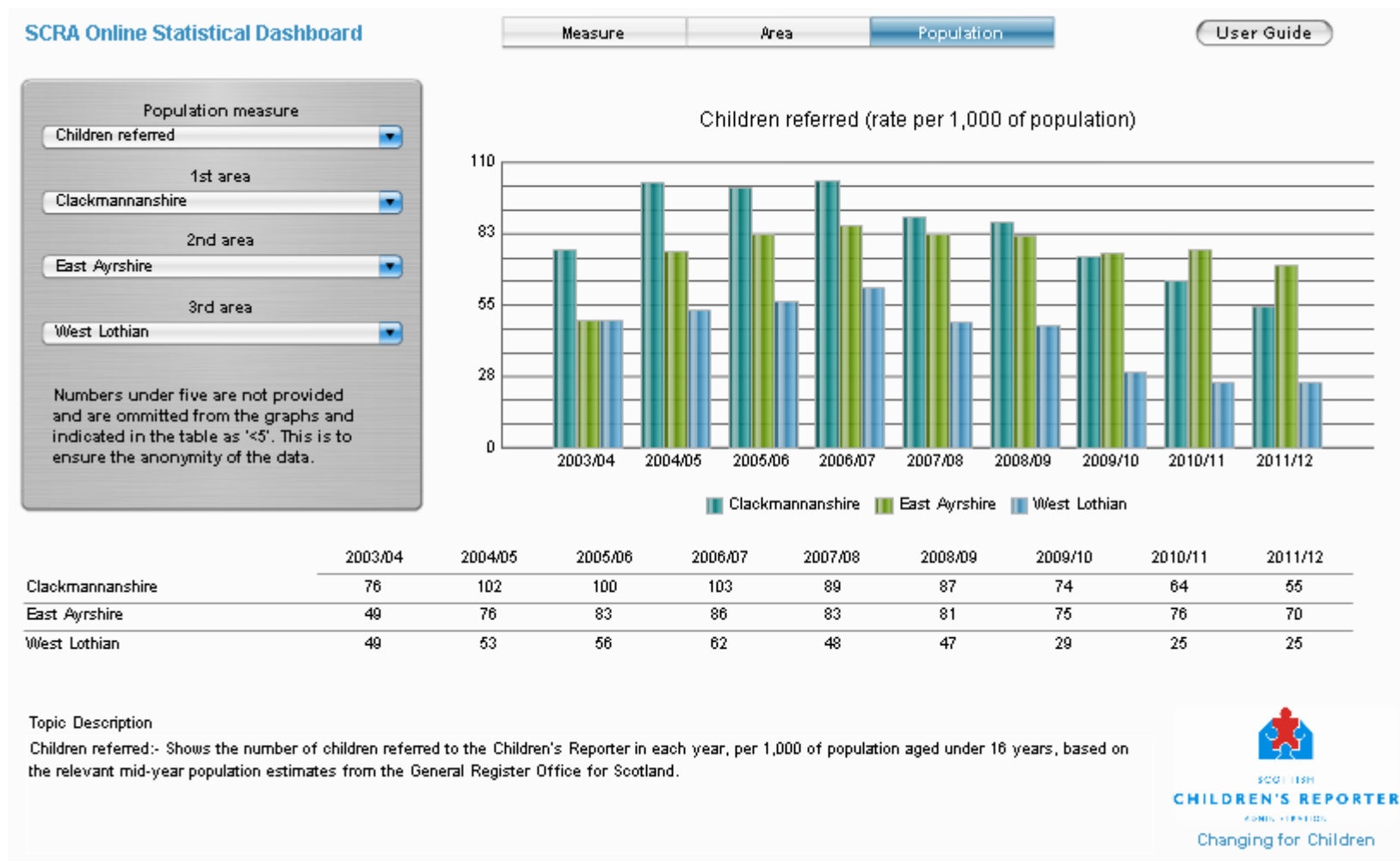
Children referred and referrals received ⁹

Table 1.7	Number of children	Number of referrals
2009/2010	699	1,285
2010/2011	608	979
2011/2012	514	814

Table 1.8	0-5 age breakdown of children referred to reporter:						
	0 yrs	1yr	2yr	3yr	4yr	5yr	Total
2009/2010	59 children	50 children	30 children	42 children	36 children	30 children	247 children
2010/2011	56	37	38	31	38	22	222
2011/2012	28	36	27	26	27	21	165

⁹ [http://www.scra.gov.uk/cms_resources/Online%20Stats%20\(LA\)%202011-12.pdf](http://www.scra.gov.uk/cms_resources/Online%20Stats%20(LA)%202011-12.pdf)

Scottish Children's Reporter Administration 11/12¹⁰



Source: SCRA website

¹⁰ [http://www.scra.gov.uk/cms_resources/Online%20Stats%20\(LA\)%202011-12.pdf](http://www.scra.gov.uk/cms_resources/Online%20Stats%20(LA)%202011-12.pdf)

Table 1.9 Children referred by age and grounds of referral¹¹

Ground	0 year			1 year old			2 year old			3 year old			4 year old			5 year old		
	09/10	10/11	11/12	09/10	10/11	11/12	09/10	10/11	11/12	09/10	10/11	11/12	09/10	10/11	11/12	09/10	10/11	11/12
a	0	0	0	0	0	0	0	0	0	0	0	0	0	0	0	<5	0	<5
b	<5	<5	<5	<5	0	<5	0	<5	<5	<5	<5	<5	0	<5	0	<5	<5	0
c	34	37	19	31	22	26	20	24	18	24	24	14	17	29	12	21	14	13
d	26	22	8	19	16	9	13	12	8	17	6	10	19	10	11	6	10	6
e	<5	<5	<5	5	<5	<5	0	<5	<5	6	<5	<5	0	<5	<5	<5	<5	<5
f	<5	0	<5	0	<5	<5	<5	<5	<5	0	0	<5	<5	<5	6	<5	<5	<5
h	0	0	0	0	0	0	0	0	0	0	0	0	0	0	0	0	0	0
i	0	0	0	0	0	0	0	0	0	0	0	0	0	0	0	0	0	0
j	0	0	0	0	0	0	0	0	0	0	0	0	0	0	0	0	0	0
k	0	0	0	0	0	0	0	0	0	0	0	0	0	0	0	0	0	0
l	0	0	0	0	0	0	0	0	0	0	0	0	0	0	0	0	0	0
total	59	56	28	50	37	36	30	38	27	42	31	26	36	38	27	30	22	21

¹¹ The grounds for referral exist in section 52(2) of the Children (Scotland) Act 1995 (a) is beyond the control of any relevant person, (b) is falling into bad associations or is exposed to moral danger, (c) is likely (i) to suffer unnecessarily; or (ii) be impaired seriously in his health or development, due to a lack of parental care, (d) is a child in respect of whom any of the offences mentioned in Schedule 1 to the Criminal Procedure (Scotland) Act 1995 (offences against children to which special provisions apply) has been committed, (e) is, or is likely to become, a member of the same household as a child in respect of whom any of the offences mentioned in paragraph (d) above has been committed, (f) is, or is likely to become, a member of the same household as a person who has committed any of the offences referred in paragraph (d) above, (g) is, or is likely to become, a member of the same household as a person in respect of whom an offence under sections 1 to 3 of the Criminal Law (Consolidation) (Scotland) Act 1995 (incest and intercourse with a child by a step-parent or person in position of trust) has been committed by a member of that household, (h) has failed to attend school regularly without reasonable excuse, (i) has committed an offence, (j) has misused alcohol or any drug, whether or not a controlled drug within the meaning of the Misuse of Drugs Act 1971, (k) has misused a volatile substance by deliberately inhaling its vapour, other than for medicinal purposes, (l) is being provided with accommodation by a Local Authority under s25, or is the subject of a parental responsibilities order obtained under section 86, of this Act and, in either case, his behaviour is such that special measures are necessary for his adequate supervision in his interest or the interest of others, (m) is a child to whom subsection (2A) below applies: *(2A), (a) A requirement is made of the Principal Reporter under s12(1) of the Antisocial Behaviour etc. (Scotland) Act (asp 8) (power of a Sheriff to require Principal Reporter to refer case to Children’s Hearing) in respect of the child’s case; and (b) the child is not subject to a Supervision Requirement.

* This ground of referral was added by the Antisocial Behaviour (Scotland) Act 2004

Reason C - is likely (i) to suffer unnecessarily; or (ii) be impaired seriously in his health or development , due to a lack of parental care:

Table 1.10	0yr	1yr	2yr	3yr	4yr	5yr	Total	of total referrals
09/10	34 children	31 children	20 children	24 children	17 children	21 children	147 children	59.5%
10/11	37	22	24	24	29	14	150	25%
11/12	19	26	18	14	12	13	102	20%

2.5 Teenage Pregnancy

Key Issues:

- figures are consistently higher than national average since 1996

Teenage Pregnancies (aged < 18)

Table 1.11

Teenage Pregnancies (aged < 18)

by council area ¹ of residence

Council Area ¹		96/98	97/99	98/00	99/01	00/02	01/03	02/04	03/05	04/06	05/07	06/08	07/09	08/10
Clackmannanshire	Rate	52.0	47.0	49.5	46.3	47.4	42.1	44.5	44.3	44.9	44.4	46.1	45.2	42.8
	Nos.	156	136	140	131	137	122	129	130	134	136	143	141	131
Scotland		44.4	43.8	42.7	40.9	39.8	39.6	40.2	40.8	41.1	41.5	41.1	39.9	37.9
Falkirk	Rate	44.0	42.6	41.8	40.9	40.7	40.7	42.3	43.8	45.7	47.2	45.5	44.2	39.6
	Nos.	354	336	326	315	317	317	333	352	375	396	384	372	328
Stirling	Rate	35.7	37.1	35.3	37.1	33.8	31.0	27.3	28.2	29.5	28.2	26.3	22.1	22.7
	Nos.	173	178	170	175	162	151	134	143	151	153	146	125	127

Poor outcomes associated with teenage parenthood:¹²

- premature birth and low birthweight
- infant mortality, hospitalisation of infant, accidental injuries in childhood
- smoking in pregnancy
- low breast feeding rates
- poor diet
- poor maternal health, postnatal depression, isolation and relationship breakdown
- repeat unplanned pregnancies
- no qualifications, not in education training or employment
- parenting difficulties
- mothers at risk of poverty and poor housing in later life
- children at risk of lower academic achievement, poverty and unemployment in later life

¹² Teenage Parent who cares?

3.0 WHAT ARE OUR LOCAL KEY DRIVERS?

Nationally, Single outcome agreements and the community planning processes like the Integrated Children & Young People's Plan, are seen as the key local mechanisms for putting the Early Years Framework into practice. In doing so, the focus remains on outcomes rather than inputs, and the Scottish Government will work to develop better indicators of outcomes from early years policies and services.

"Local partners have had much flexibility in implementing the framework and it is clear that there is a great deal of excellent and innovative work going on across Scotland to deliver against the ten elements of transformational change. This is happening in line with Getting it right for every child (GIRFEC) principles".

Source: Early years framework - progress so far

3.1 Single Outcome Agreement (SOA)

The Clackmannanshire SOA for 2011-12¹³ is structured around local community planning outcomes, and has been approved by Council, the Scottish Government, and endorsed by the Clackmannanshire Community Planning Alliance.

The 2011-2012 SOA highlights the following priority area:

EARLY INTERVENTION, WITH AN EMPHASIS ON PRE-5s IN VULNERABLE FAMILIES

It states that "the focus of this early intervention is on parents who are susceptible to the risks and behaviours which will limit their child's options in later life. Evidence shows that the influences on the early years of children's lives will determine their social, educational and spiritual aspirations, so while remedial work will continue with children who have grown up in chaotic environments, partners will also prioritise the family setting from as early as pre-birth.

Partners will improve how they weave together the different strands of work which will help us to address this action, by simplifying information sharing and broadening links with other partners with expertise in community education, substance rehabilitation and preventing violence against women."

SOA ACTIONS

- The development of a multi-disciplinary early co-ordinated intervention service for vulnerable families with young children
- Direct engagement with a range of partners to deliver targeted and appropriate services

SOA TARGET

- Reduce the number of children where partners are required to provide alternative care on a temporary or permanent basis by increasing the capacity of parents and carers to care for very young children

This action is primarily being taken forward by the Early Co-ordinated Intervention Project working with vulnerable families with children aged 0-5, now known as the Children and Families Assessment and Support Service. Actions relating to this work are contained within the Integrated Children's Services Action Plan¹⁴.

¹³ <http://www.clacksweb.org.uk/site/documents/communityplanning/clackmannanshiresingleoutcomeagreement20092012/>

¹⁴ <http://www.clacksweb.org.uk/children/childrenservicesplanning/>

3.2 Children & Young People's Integrated Services Plan

"Integrated Children's Services Plans (ICSP) are a statutory obligation for local authorities and should also be seen as an opportunity to take forward transformational change in their local area. ICSPs should be seen as the children and young people's component of Community Plans, but should become increasingly focused around the needs of children and families, rather than around systems and processes."

Source: Early Years Framework Part 2

The Children & Young People's Integrated Services Plan sets out a targeted framework of strategic priorities and objectives, for development and improvement across the range of services for children and young people in Clackmannanshire throughout 2010/2013. The Plan is the single vehicle through which plans and strategies for children and young people will be implemented. It is the means by which outcomes for children and young people will be evaluated, and sets out how local partnerships intend to plan jointly and strategically to deliver the relevant Concordat and Single Outcome Agreement commitments in relation to children and young people and families.

Vision

That every child and young person has the best possible start in life,
and achieves their potential.

Relevant 2010/2013 Priorities:

- Ensure that **GIRFEC principles** and processes are embedded in all partner organisations.
- **Improve targeted services for vulnerable children** especially in the area of early intervention with an emphasis on pre-5s and those affected by parental substance misuse.

Objectives:

- Protect children and young people from neglect and abuse, and support those experiencing abuse
- Support parents, carers, and their families
- Support children affected by parents' and other family members' substance misuse
- Ensure children, parents & carers are involved in & consulted about key decisions that affect them
- Improve access to services
- Develop systems that ensures children will receive the most appropriate services at the most appropriate time
- Reduce children and young peoples substance misuse
- Promote positive mental health and emotional wellbeing
- Improve the sexual health of children and young people
- Support young people to reduce offending

3.3 GIRFEC

"The common values required by the Early Years Framework are enshrined within the GIRFEC values and principles. These values and principles are currently being embedded across Scotland"

Source: Early years framework - progress so far

A focus on improving outcomes for children, young people and their families based on a shared understanding of well-being.

An integral role for children, young people and families and those with a relevant interest in reaching the decisions that affect children's lives as part of assessment, planning and intervention.

Maximising the skilled workforce within universal services to address concerns at the earliest point themselves, where they can, bringing others around them as needed.

A common approach to gaining consent and to sharing information where appropriate.

A coordinated and unified approach to identifying concerns, assessing needs, agreeing actions and outcomes based on indicators of well-being.

Streamlined planning, assessment and decision making processes that lead to the right help at the right time for the child.

Consistent high standards of co-operation, joint working and communication, where more than one agency needs to be involved.

A confident and competent workforce in the statutory universal and targeted services as well as the independent sector.

A lead professional to co-ordinate and monitor multi-agency activity where necessary.

The capacity to share demographic, assessment, planning and outcome information electronically within and across agency boundaries through the national eCare programme where appropriate.

The Regional GIRFEC strategy group are developing an **Integrated Assessment Framework** for Forth Valley, and this group reports to the Joint Chief Executives Group (G5)¹⁵. Locally, a joint Clackmannanshire and Stirling **GIRFEC Implementation Group** linked to the Children's Planning Process is driving forward implementation of relevant principles, focussing initially on vulnerable young people and child protection. To date this has included multi-agency GIRFEC training across Forth Valley, and training on the Integrated Assessment Framework.

A targeted programme of training delivered by BAAF has also taken place with the Assessment and Contact team, Social Workers and partner staff from third sector organisations. The specific focus has been on the needs of the family with children 0-5 years affected by substance misuse and other chronic problems, with the goal of improving outcomes for the children of these families

¹⁵ Forth Valley has a Chief Officer's Strategic Group entitled G5. The G5 Group has membership from the 3 local authorities that make up Forth Valley (Clackmannanshire, Falkirk and Stirling); Central Scotland Police and NHS Forth Valley. They have a subgroup entitled G5 Reporting Group.

which may be achieved through restitution to the birth parent(s) or by securing permanence with substitute families within improved timescales.

The Forth Valley Early and Effective Intervention Hub has been operational since August 2011 and will ensure that responses are coordinated, appropriate and responsive.

Within Clackmannanshire work is being taken forward by the Clackmannanshire Early Co-ordinated Intervention Service with Vulnerable Families with Children aged 0-5. This service is now known as the 'Children & Families Assessment and Support Service'.

4.0 What Do We Need To Do?

It is recognised that the experiences that children have during their early years are of crucial importance in a child's future physical, emotional, creative and intellectual development.

From the child's perspective, there is evidence¹⁶ that **exposure to high levels of parental stress, neglect and abuse can have a severe effect on brain development**. There are clear gaps between the development of children whose parents face such stresses and those being brought up in less stressful households. These gaps continue through life. At age 3, children at higher risk of poor outcomes can be identified on the basis of their chaotic home circumstances, their emotional behaviour, their negativity and poor development. These children face many risks and improving early years support is key to improving child protection.

By the time such children reach adulthood, these children are more likely to have poor health outcomes, be unemployed, have criminal convictions, have substance misuse problems and have experienced teenage pregnancy. Improving the early years experiences of these children is therefore a central element for **regenerating communities, reducing crime, tackling substance misuse and improving employability**. It will also help us to break the repeating cycle of poor outcomes often associated with teenage pregnancy.

Source: Early years framework - progress so far

"A package of effective early years support to reduce the frequency and type of services demanded by children with the most severe needs could have a significant impact on improving outcomes for them and reducing long term costs to the public purse. If earlier, effective support could be given to a child with the most severe needs, resulting in a 10 per cent reduction in the total amount paid out to cover services later in life, this could result in potential savings of around £94,000 for each individual."

4.1 What Works?

- working with the family in a coordinated and most effective way - GIRFEC
- agreed referral process/pathway with multi-agency screening and review group
- integrated teams better connect children and adult service with a focus on the family as a unit
- targeted family support reduces the number of 'looked after' young people
- intensive family support service and group work programmes aimed at vulnerable young people and their families whose needs have been complex - achieves positive outcomes at both home and school
- the establishment of working relationships (integrated/joint initiatives) with a range of support agencies facilitates a holistic approach to meeting the needs of families
- multi-agency initiatives reduces stigma and increases involvement by service users

¹⁶ Early Years Framework Dec 2008 <http://www.scotland.gov.uk/Publications/2009/01/13095148/6>

- intensive support is provided in a flexible way that suits the needs and demands of service users - including evenings and weekends
- addressing the psychological consequences of poor parenting to break the generational cycle (counselling, raising self esteem etc)
- shifting the focus from crisis intervention to providing early support to families
- Interventions with parents ensure there is increased insight into children's perspectives and needs
- Children are able to understand their parent's substance misuse and develop their coping strategies - Resilience
- interventions are responsive enough to be delivered at their maximum at the particular time when change is most likely to happen in people's lives
- Family centres are used as a community resource by a variety of agencies, groups and organisations to provide services that benefit both children and their families.
- increasing the capacity of agencies to collaborate.

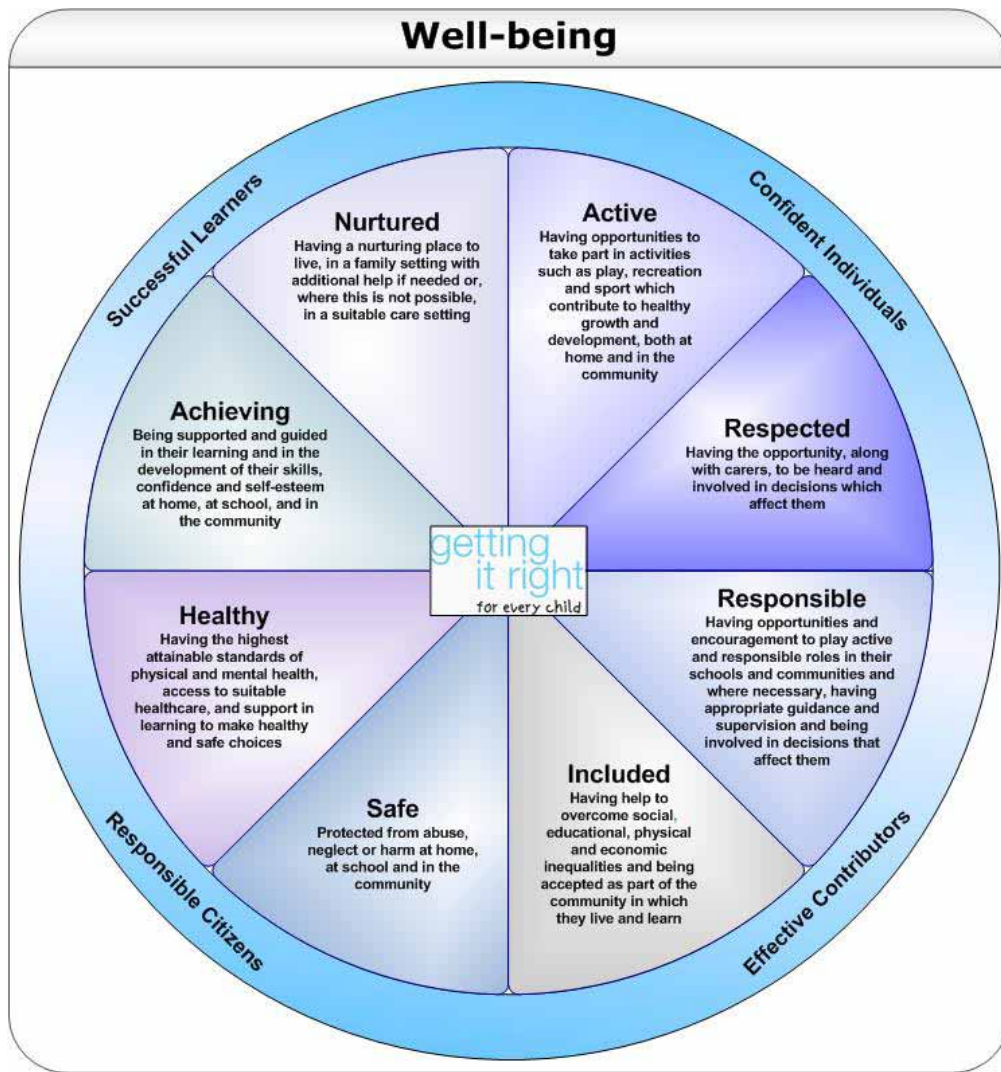
4.2 What Outcomes Do We Want To Achieve?

As part of the new service the outcomes for improvements will be measured through the use of specific evaluation tools to support parents. To date examples of tools being used are focussed around a mix of individual and group work programmes with our Integrated Mental Health Services to support parents.

Improved outcomes are measured through:

- Group work - '**Self Esteem**' using the Rosenberg Scale. Parents as individuals can rate themselves at start and end of programme. One to one support is also given to do this.
- '**Locus Of Control**' - adapted by the Integrated Mental Health Service. Parents are able to rate themselves on beliefs about what they feel they can control in their lives, such as their physical and mental health. This is rated at the start and end of the programme which helps parents to set targets and reflect on their individual progress.
- Individual work use of Accredited Programmes:
- '**Overcoming Anxiety**' and '**Overcoming Depression**'. This is a 5 areas approach adapted from the work of the Chris Williams Programme which is designed to help individuals target and improve behaviours, monitor progress, identify priorities for change, to empower through self help and individual feedback on strengths and improvements.
- A range of Cognitive Behavioural **Therapy** (CBT) Approaches are also available.

It is also planned to run a group for **Anger Management** in the near future. At present work is done on an individual basis to look at anger and development of appropriate coping strategies. Where pre-existing causes exist for anger, support from other services such as Counselling will also be accessed.



Child Outcomes

- SHANARRI¹⁷
- improved school attendance, behaviour at school and educational attainment
- developing more appropriate friendships and extending friendship networks

Family outcomes

- Improved positive interaction within families and enhanced parenting skills
- reduced dependency on drugs and/or alcohol
- increased self-esteem and confidence amongst family members
- taking enhanced responsibility and increasing autonomy for decision making
- improved anger management
- improvements in health awareness and diet
- improvements in mental health
- resolving family crisis situations more effectively
- improved danger awareness

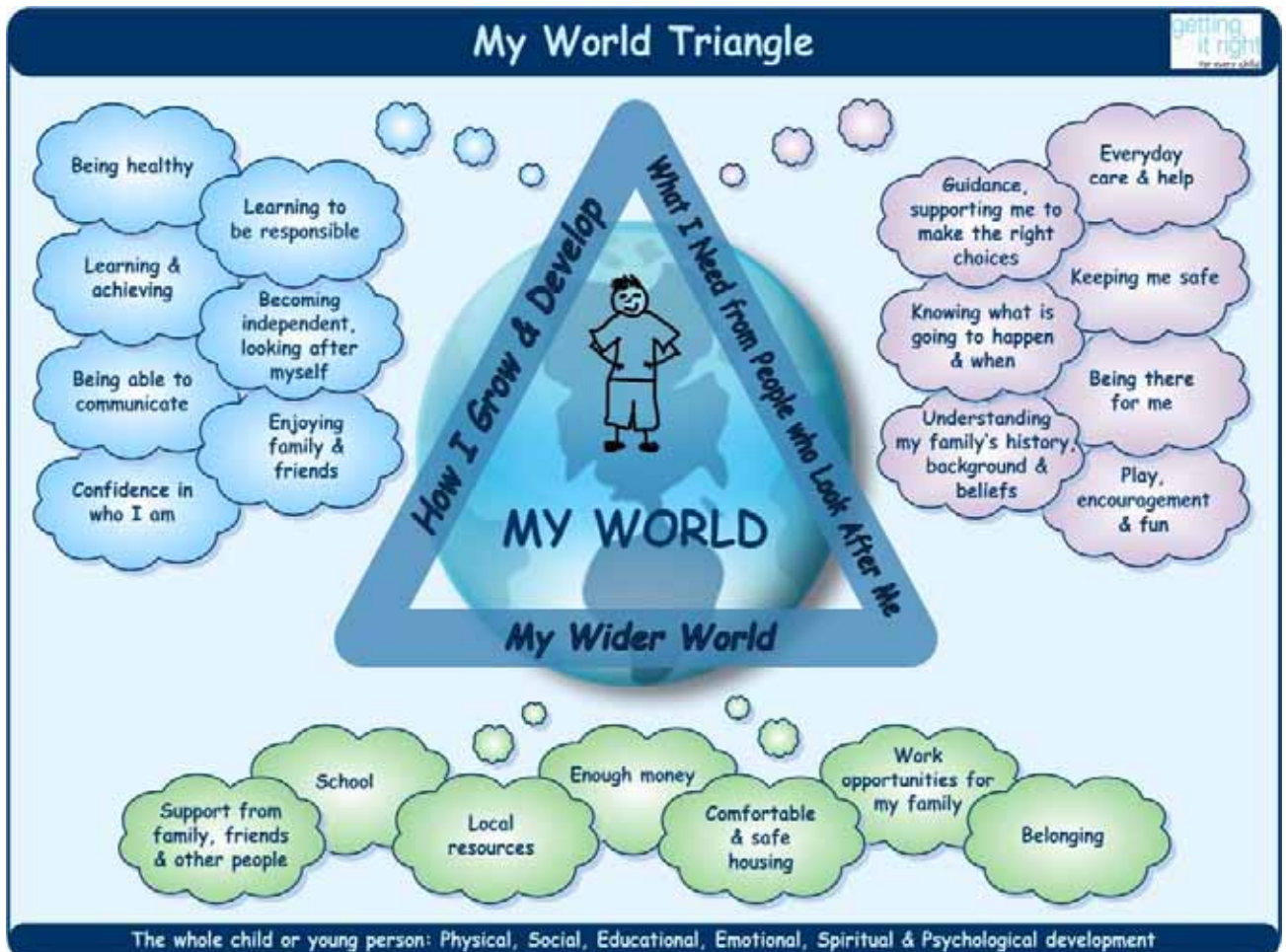
Community Outcomes

- improved household management skills, including financial and tenancy management
- reduced number of complaints and antisocial behaviour

¹⁷ Safe, Healthy, Active, Nurtured, Achieving, Respected and Responsible and Included. These are known as the 'wellbeing indicators' and are remembered by the acronym S.H.A.N.A.R.I.

- enhanced employment opportunities and access into employment
- developing respect for others
- ceasing involvement in criminal activities
- enhanced communication/involvement of agencies

Funding opportunities will arise from the **Early Years and Early Intervention Change Fund 2012/2013** which will be overseen by the Early Years Taskforce and is aimed at using evidence-based interventions to give our children the best start in life. The resourcing of this fund will be provided by NHS Boards and local authorities, working together to agree their local contributions and achieve maximum impact and value for money. As a central contribution to this, the Scottish Government will provide £50 million of resource over the lifetime of this Parliament through the Sure Start Fund component of the Scottish Futures Fund.



4.3 What Does the Clacks Model Include?

Holistic Approach¹⁸

- Multi-agency screening panel
- Integrated Teams/Joint Working
- Targeted Family Support.
- Prevention/Early Intervention
- Outcome focussed
- Agreed referral pathways
- Dedicated community based resources

¹⁸ The original report approved at Council December 2011 provides links to evaluations and good practice.
<http://www.clacksweb.org.uk/site/documents/childcare/earlyyearsframeworkclackmannanshirelocalimplementationplan/>

4.4 Local Delivery Model

The Early Years Early Intervention Working group have agreed the maintenance of the principles of consistency approach, balance between prevention and early intervention, and to continue to build on the best of what we know works effectively for children and their families.

Key Principles of the Children and Families Assessment and Support Service

- Focus and target will be to sustain improvements in the life chances of vulnerable families and their children across Clackmannanshire. Working towards the Clackmannanshire Single Outcome Agreement (SOA) priority to support vulnerable families
- Identification and appropriate levels of support for those families as early as possible remains a key priority for the Council.
- Re-provision of services to support the most vulnerable of families Clackmannanshire wide.
- Change of delivery of services using current resources to maximum effect. Delivery will be robust, appropriate and supportive of the needs of families in Clackmannanshire
- Services working closely together in a co-ordinated way to identify families at the earliest point possible.
- The model of working is consistent with the recommendations in the published paper “Joining the Dots” and will address our delivery of both Getting it Right for Every Child (GIRFEC) 0-5 years and the Early Years Framework.

Request Process/Pathway

The allocation of services to families is co-ordinated. To access services via the Screening Group the agreed paperwork is submitted to the co-ordinator with full details of why a service is requested. This is then discussed at the Screening Group and a decision taken by the team of the most appropriate method of intervention. The Screening Group is made up of a range of services, Early Years, Psychological Services, Health Service (NHS), CADS¹⁹, CAMHS²⁰, Third Sector Services, Education, Housing and can also include Police and other services dependent on the content of requests and reviews received.

The group meets monthly or as required to consider all of the requests/reviews received, decisions are taken by the group on the type of assessment/service/support required, this will also include duration of support, service or assessment, clear review timescales and identification of the lead professional and service to deliver it as appropriate.

The Forth Valley Integrated Assessment Framework paperwork is used.

Criteria for Request

- Child is on Child Protection Register and service is part of Child Protection Plan
- Child is at risk of failing in normal developmental patterns as a result of lack of stimulation. (This could be as a result of domestic abuse, mental health difficulties/learning difficulties)
- Child has Additional Support Needs as defined by Additional Support Learning Act (Revised 2009) (clearly defined criteria and to prevent reception into care or using more expensive services)
- Children of substance misusing parents where child is failing to meet developmental milestones

¹⁹ National Health Service - Community Alcohol and Drugs Services (CADS)

²⁰ National Health Service - Child and Adolescent Mental Health Services (CAMHS)

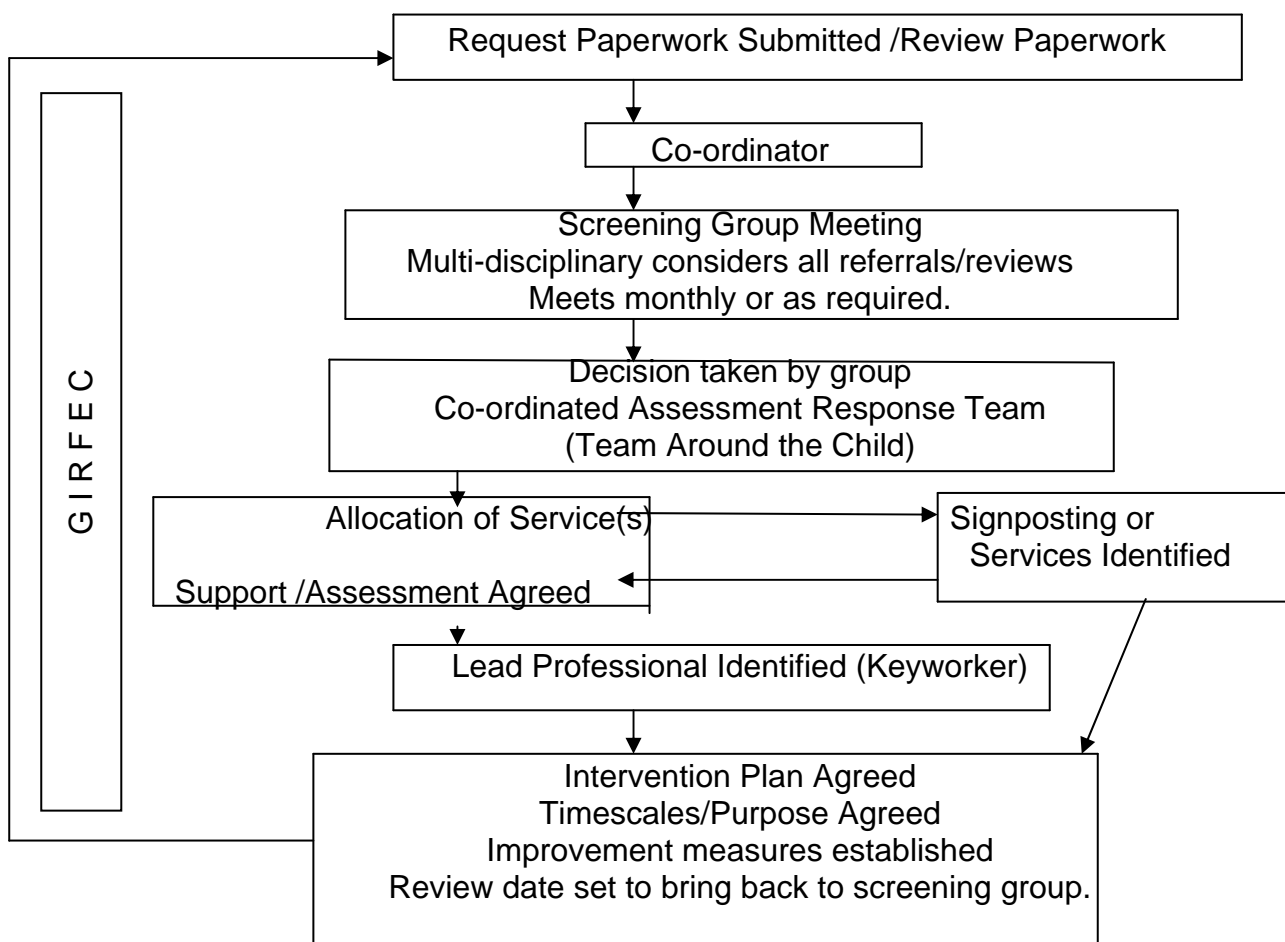
- Prevention of becoming accommodated as part of agreed package of support (multi-disciplinary planning)
- Short term assistance (when family in crisis) to prevent child coming into care e.g. parental illness, death, mental health breakdown - after all other possibilities explored
- As part of multi-disciplinary assessment to determine need/or not for substitute care for a child on a permanent basis

Request Process/Pathway

Requests come from a range of areas, these can include Social Work, Health, Police, Psychological services, The Early and Effective Interventions Service and other areas of service including Housing. Access to services is through request to the Screening Group.

All applications, requests for a service, are discussed at the Multi-disciplinary Screening Group meeting. This is held monthly or as required. The request must detail:

Concern and what is being requested, must also detail if other services are already involved with the family, who they are and what they are doing. This enables the service to determine the need for initial assessment/support/service or signposting, it also enables to clearly identify if it requires single agency planning or a full integrated assessment/multi-agency assessment.



Example of Intervention Plan

Table 1.12 Placements will be time limited as part of overall plan.

Timescales	What is purpose/task specific/outcome focussed	Team Around The Child	Expected Outcomes
Start, review and end date of support/assessment detailed	e.g. parenting/risk/viability /pre-birth	Who is Lead Professional/ Service	Improvement measures e.g. .Parent(s) accessing therapeutic help with addiction. .Regular attending programme. .Parents recognise impact of usage on ability to care for child e.g. practical care & recognition of needs of child e.g. feeding/nappy change/sleep/affection etc.
Start Date		Keyworker	Success Measured e.g. .Sustained reduction in use of prescription medication .Sustained and improved ability to cope with child in home environment .Child's physical and emotional needs are appropriately met .Child meets developmental milestones
Review Date	This will be broken down for family/child	Name	
End Date Written contract agreed with parents	If Child Protection, must note date of next Child Protection Case Conference or review	Organisation	

5.0 HOW ARE WE GOING TO MONITOR FOR SUCCESS?

"The indicators are neither mandatory nor prescriptive, and are to be seen as a tool for Community Planning Partnerships to support them in measuring progress in achieving better outcomes for children in their areas."

Source: Early years framework - progress so far

The Scottish Government has highlighted a series of indicators that are relevant to the national Early Years Framework. Locally these are monitored through the Single Outcome Agreement (SOA) and the Children and Young People's Integrated Services Plan (ICSP). Progress on the SOA is reported annually to Scottish Government. Progress on the ICSP is reported to the Children's & Young People's Community Planning Partnership and summarised in the plan.

The Early Years Framework Implementation Plan will be reported to Council Health Housing & Care Committee on an annual basis.

5.1 Indicators²¹

Core 8²²

- Teenage pregnancy rate (*pregnancies among under 16 year olds (3 year average per 1000 relevant population)*)

Monitored through SOA and ICSP. Indicator in SOA (under 18), Children & Young People's Integrated Services Plan (ICSP) indicator (under 16). Work in this area is also currently being monitored by the Clacks Sexual Health Implementation Group.

- Appropriate birth weight for gestational age (*low weight live births*)

Monitored through the Children & Young People's Integrated Services Plan (ICSP) 2010-2013.

- Breastfeeding at 6-8 weeks (*% of newborn children exclusively breastfed at 6-8 weeks*)

Monitored through the Children & Young People's Integrated Services Plan (ICSP) 2010-2013.

- % parents who rate their neighbourhood as a good place to live (*% of adults stating their neighbourhood is a 'very good' place to live*) Monitored through the SOA.

- Children in benefit dependent households (*% of children living in households that are dependent on out of work benefits or Child Tax Credit*)

Monitored through the SOA.

- % of obese children in P1 (*estimated % of obese children in P1*)

Monitored through the SOA.

- % of children with dental decay in P1 (*% of children with dental decay in P1*) Monitored through the Children & Young People's Integrated Services Plan (ICSP) 2010-2013.

- % of young people in sustainable post school destinations (*% of school leavers in positive and sustained destinations*)

Monitored through the SOA.

²¹ As a reminder the Core 8 are a subset of the original menu of 35 indicators which were developed by the Data and Indicators Stakeholder Group and published in September 2010.

²² The phrasing in italics and brackets sets out how the indicator is currently expressed in the Menu of Local Outcome Indicators, as it is important that, wherever possible, the early years indicators align with those used in the local Single Outcome Agreement.

APPENDIX A

GLOSSARY

ADP	Alcohol and Drug Partnership
ASL	Additional Support For Learning
Assessment	The process of defining an individual person's needs, the help that they require and determining their eligibility for services.
CAMHS	The Child and Adolescent Mental Health Service (CAMHS) provides assessment and intervention for children and young people with mental health difficulties and their families.
CCHC	Clackmannanshire Community Healthcare Centre
Children's Hearing	Rather than going to Court, this body deals with cases where a child has committed an offence or has been offended against and is in need of care and protection.
CP Register	Child Protection Register A list held by the Local Authority of children who are at risk of abuse or neglect and require protection. http://www.clacksweb.org.uk/children/childprotection/
CHP	Community Health Partnership
CPP	Community Planning Partnership - known in Clackmannanshire as the Alliance http://www.clacksweb.org.uk/community/planning/
EEI	Early & Effective Intervention
Early years workforce	Staff working with children aged 0-5.
Forth Valley	Covers three local authorities (Clackmannanshire, Falkirk, Stirling)
GIRFEC	Getting It Right For Every Child. A Scottish Government national change agenda. http://www.scotland.gov.uk/Topics/People/Young-People/gettingitright
Group Care	Bringing children of similar ages together into a group setting to support child development such as playing, behaviour and friendships.
HMIE	Her Majesty's Inspectors of Education
Home Supervision Order	A statutory order made by the children's panel where a child remains at home.
ICSP	Children & Young People's Integrated Services Plan http://www.clacksweb.org.uk/children/childrenservicesplanning/
Joining the Dots	Report on importance of children in early years www.scotland.gov.uk/Resource/Doc/343337/0114216.pdf
Looked After	Children who may be supervised, subject to Place of Safety Orders, Child Protection Orders, Parental Responsibility Orders or Warrants and those who are on supervision living at home. Those children who require to be looked after out with their family are referred to as looked after and accommodated children.
Lead Professional	The Lead Professional is the second key role in the Getting it right for every child approach. It is seen alongside the role of the Named Person. www.scotland.gov.uk/Resource/Doc/1141/0109329.pdf
NHS	National Health Service, usually refers to the Forth Valley area and includes Clacks, Stirling and Falkirk Councils.
SCRA	The Scottish Children's Reporter Administration.
Scottish Children's Reporters Administration	The organisation that assesses the appropriateness of referring a particular case involving Children's Hearing.
SOA	Single Outcome Agreement presents the Community Planning priority outcomes for Clackmannanshire in the context of the national performance framework. http://www.clacksweb.org.uk/site/documents/communityplanning/clackmannanshiresingleoutcomeagreement20092012/
Universal Services	Public services provided to everyone e.g. School Education, Midwifery and Health Visitors (Public Health Nurses).

APPENDIX B

Early Years Resources

Below is the current range of open groups delivered where referrals are not required and are by Local Authorities and partnership Health service.

Table 1.13

What	Where	When
Baby Groups	Tillicoultry	Mondays 1:30-3:00pm
	Alva	Thursdays 10:00-11:30am
	Sauchie (Under1's)	Fridays 1-3:00pm
	CCHC	Thursdays
Toddlers Groups	Alloa Family Centre	Daily
	Tullibody Family Centre	Daily
	Tillicoultry	Tues & Thurs 1:30-3:00pm
Young Mums	Alloa Family Centre	Wed 1-2:30pm
	Tillicoultry	2012
Breastfeeding Groups	Clackmannan	Alternate Wed afternoons
	Alloa Family Centre	Monday evenings
Baby Massage	Tillicoultry	Mondays 1:30-3:00pm
	Alva	Thursdays 10:00-11:30am
	Sauchie (Under1's)	Fridays 1-3:00pm
	CCHC	Thursdays
	Clackmannan	3 week blocks run 3-4 times a year
Parentcraft Workshop	Alloa Family Centre	Monday evenings

Other groups continue to be developed to meet parental need, e.g. **Dad's group** and practical groups such as cooking on a budget in partnership with NHS Food Development workers.

Young Parents Groups also continue to be run with our Community Learning and Development team (CLD) to support parents in confidence building and preparation for **employment**.

Barnardo's will be running the second **You First programme** in Clackmannanshire in 2012. This is a refer only 20 week programme run for 12 new parents aged under 21 with the first baby under age of 1. The first programme was completed successfully by 6 parents, and will be presented with Youth Achievement Awards at the Council Celebration Of Success event later in the year.

Two further projects have been developed to work closely with our services and work with families with parents who are using substances. **Time4us** project²³ run by Signpost Recovery which aims to;

- assist parents to make positive changes in theirs and their children's lives.
- Raise parent awareness of their children's needs.
- Improve parenting skills.
- support families to stay together or be reconciled where it is in the best interests of the child.

The **Forth Valley Family Support** project which provides opportunities for families affected by substance misuse to participate in a range of support including group work, peer support groups, one to one, telephone support and home visits. This service links closely with Time4us project.

²³ This is a referral service.

Appendix C

CONSULTATION – YOUR COMMENTS & SUGGESTIONS

We would welcome your suggestions or comments on the Early Years Framework Implementation Plan update October 2012. Contact can be made via email cjohnson@clacks.gov.uk or. Fax 01259 452440, telephone 01259 450000 or send it to; The Children's Services Policy Officer, Clackmannanshire Council, Services To People, Lime Tree House, Castle Street, Alloa FK10 1EX.

General Comments

Name

Address

.....

.....

Email

Telephone

Would you like to be added to the Children's Services computerised mailing list ? Please sign if you agree to your name being on the list.

Signature

Integrated Children's Services Plan



Carol Johnson
Social Policy Support Officer
cjohnson@clacks.gov.uk
01259 452368

Original created		CJ
Version	V10	CJ
Last Updated	19/09/12	CJ
Status	draft	CJ
Database code	SSR11	CJ
Review date	30/11/12	CJ

