



Mining
Remediation
Authority



Coalsnaughton community update

23 June 2026

Carl Banton - Chief Operations Director

Zoe Rose-Higgins - Public Safety and Development Director

Incident overview / Immediate response



Ground movement was reported at Benbuck View from 18 May

Emergency services attended quickly and supported the initial response

Properties were evacuated as a precaution as the situation developed – services then disconnected



For safety area expanded to include:

- Dunmoss View
- Nechtan Drive
- Langour

Incident declared major on 27 May

We understand this is a distressing and disruptive time for residents



Actions we have undertaken

Structural inspections and surveys

Used specialist techniques (including laser scans / drone surveys) to track movement

Ground investigations ongoing, including drilling, to understand full extent of ground conditions

Survey markers and monitoring equipment installed across a wide area

Movement is ongoing - we don't yet know the cause of movement, our investigations are trying to establish this

Security fencing, CCTV and access controls in place

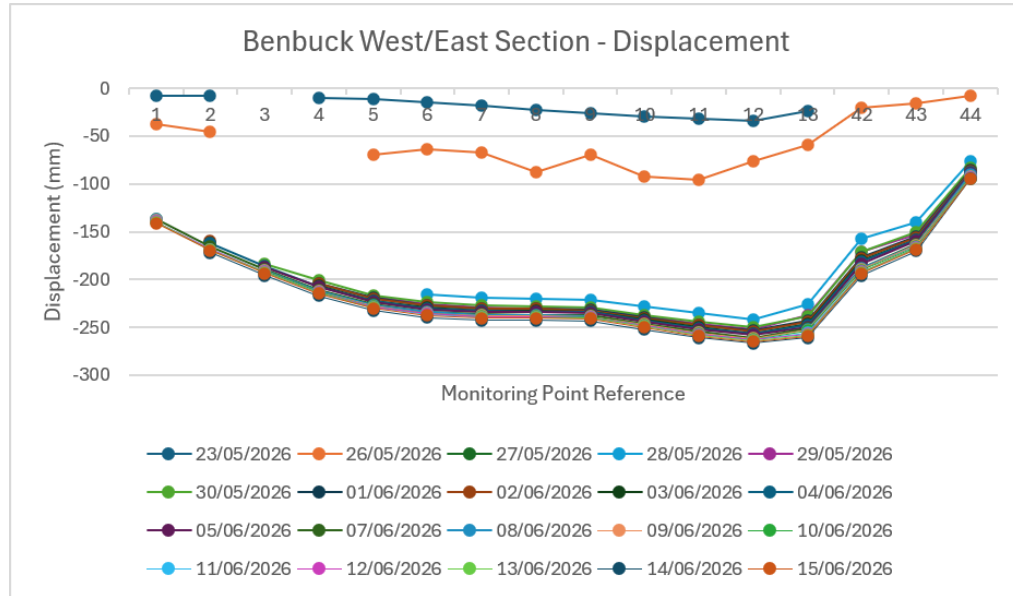
Continued supervised access for residents to collect belongings at set times

Continued communication and support for residents in partnership with the council

Worked with the council to facilitate removals



What movement the monitoring is showing



Benbuck

295mm recorded movement
Currently moving 2-5mm/week

Dunmoss

Over 345mm total movement
Currently moving 5-10mm/week

The Glen

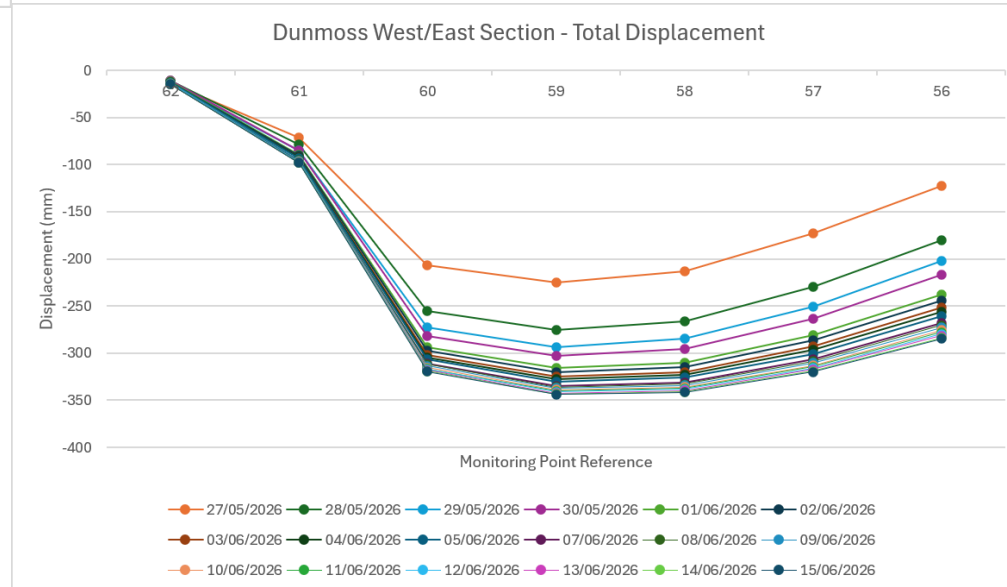
245mm total movement (one point)
Currently moving 5-10mm/week

Langour

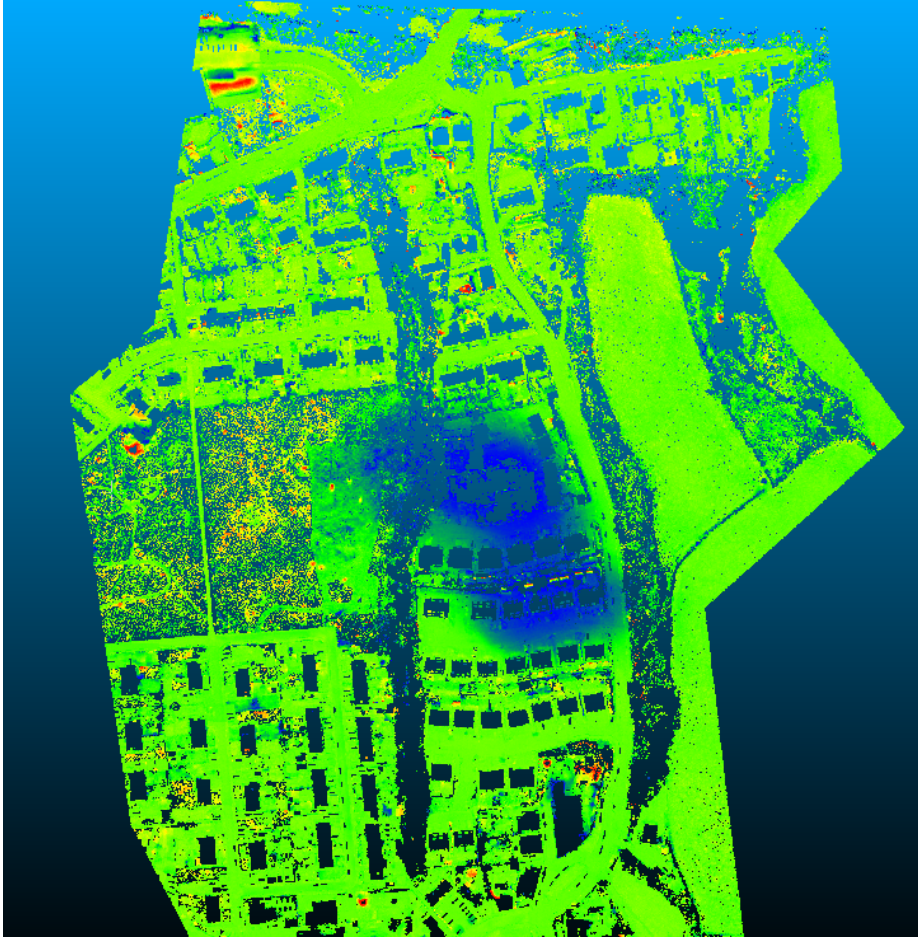
5 - 18mm total movement

Nechtan

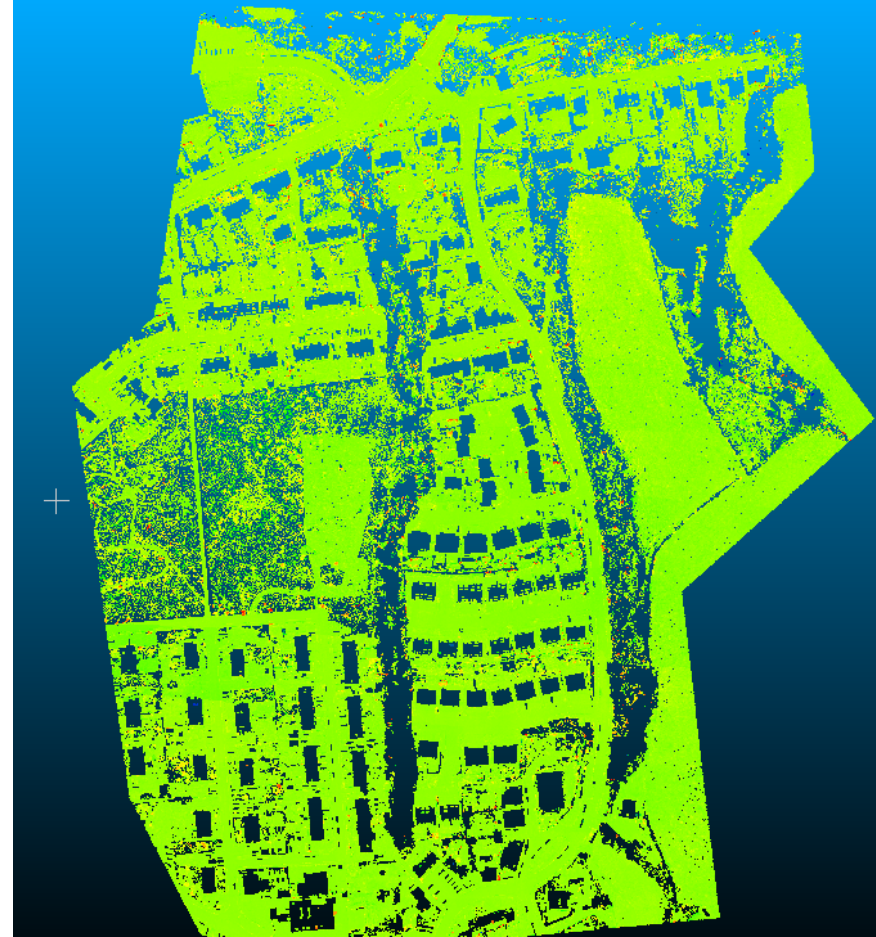
No movement



What movement the monitoring is showing

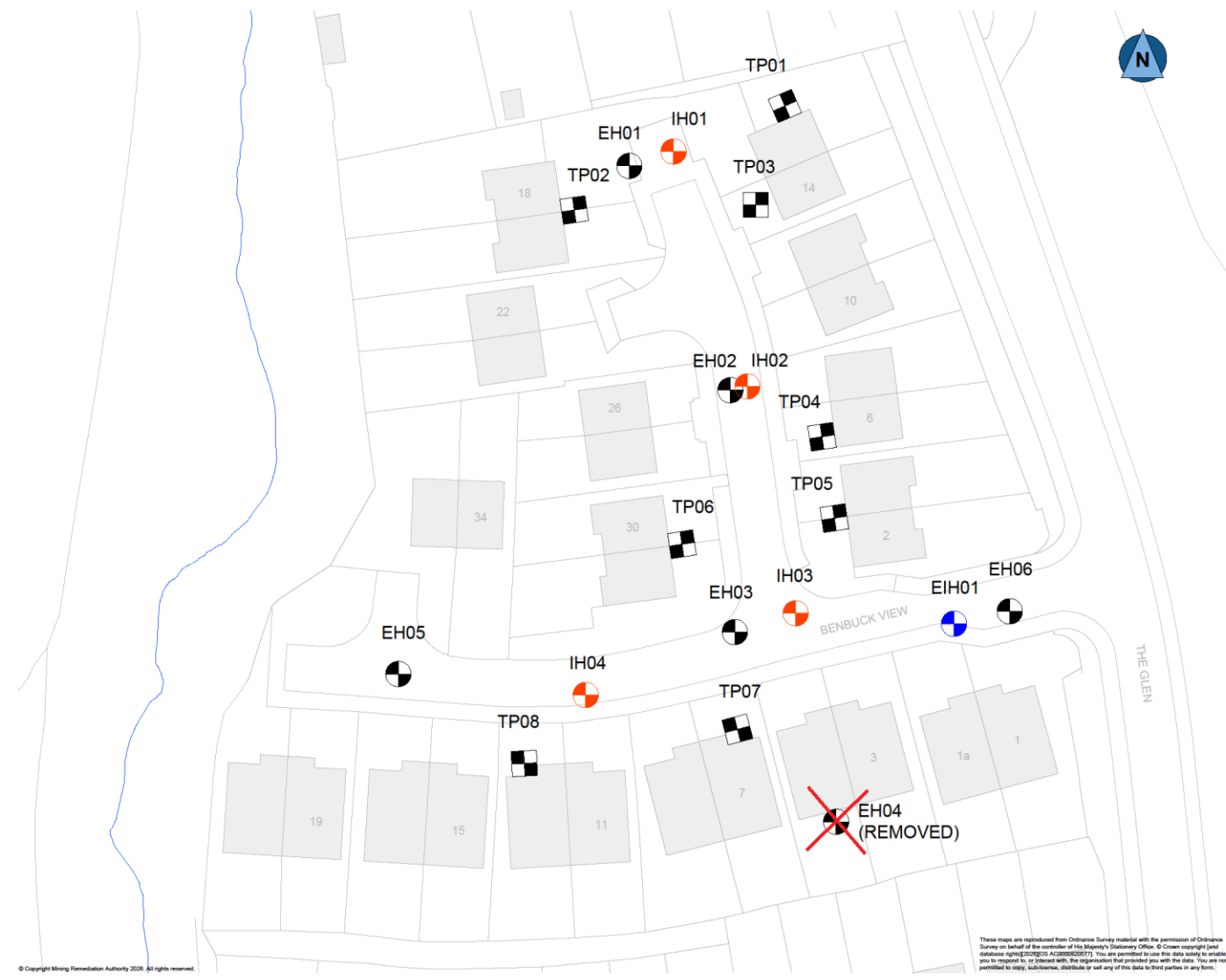


Lidar survey from 2018 vs 14 June

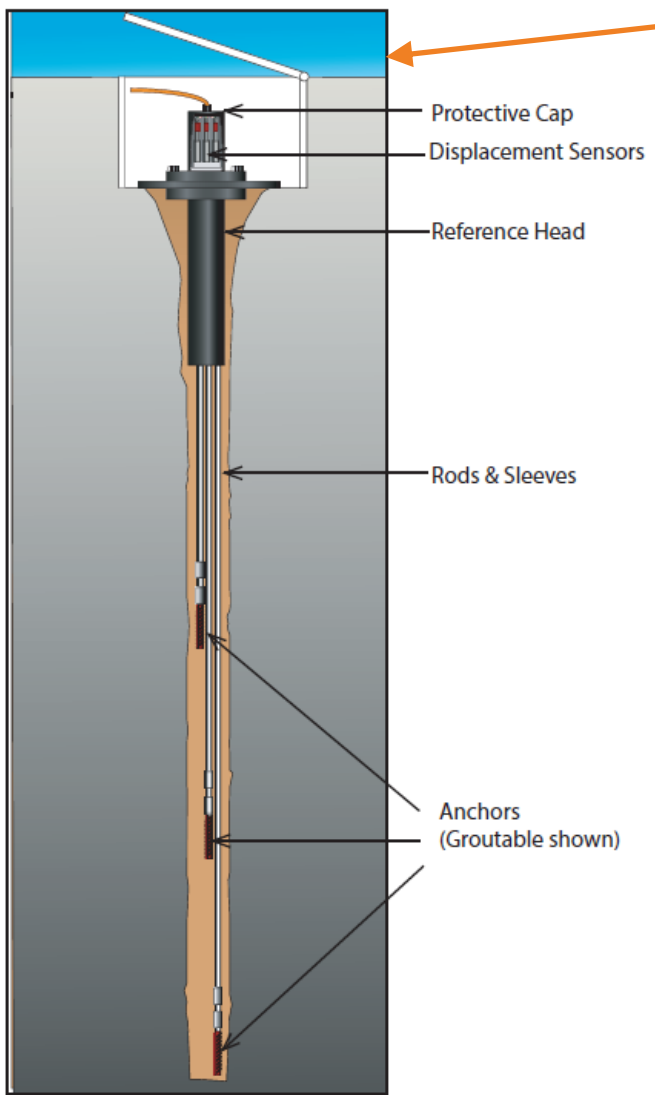


Lidar survey from 7 June vs 14 June

Ground Investigation Plan – Phase 1

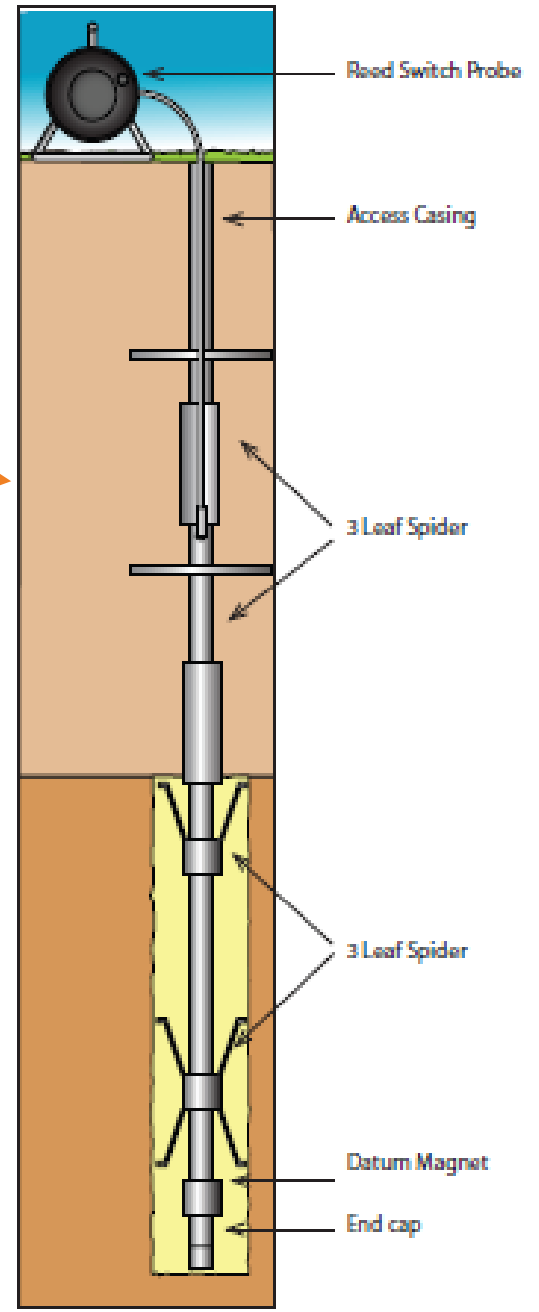


Monitoring Equipment



Extensometer

Magnetic Extensometer



Inclinometer





Extensometer Details

EH01

Rod	Depth (mBGL)
1	9.0
2	23.5
3	31.0
4	45.0

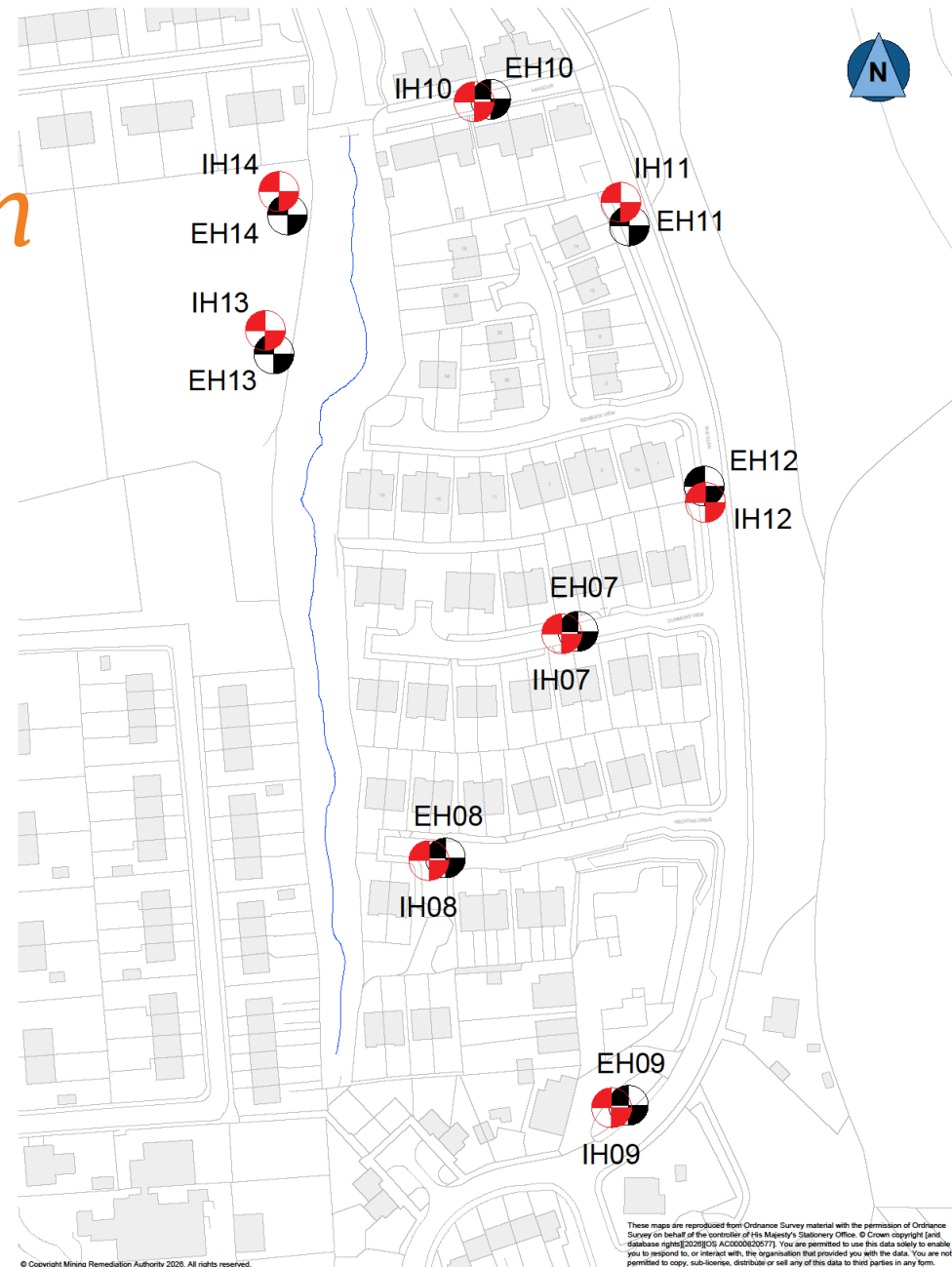
EH03

Rod	Depth (mBGL)
1	9.6
2	17.0
3	33.5
4	45.0

EH05

Rod	Depth (mBGL)
1	12.5
2	35.0
3	40.0

Ground Investigation Plan – Phase 2



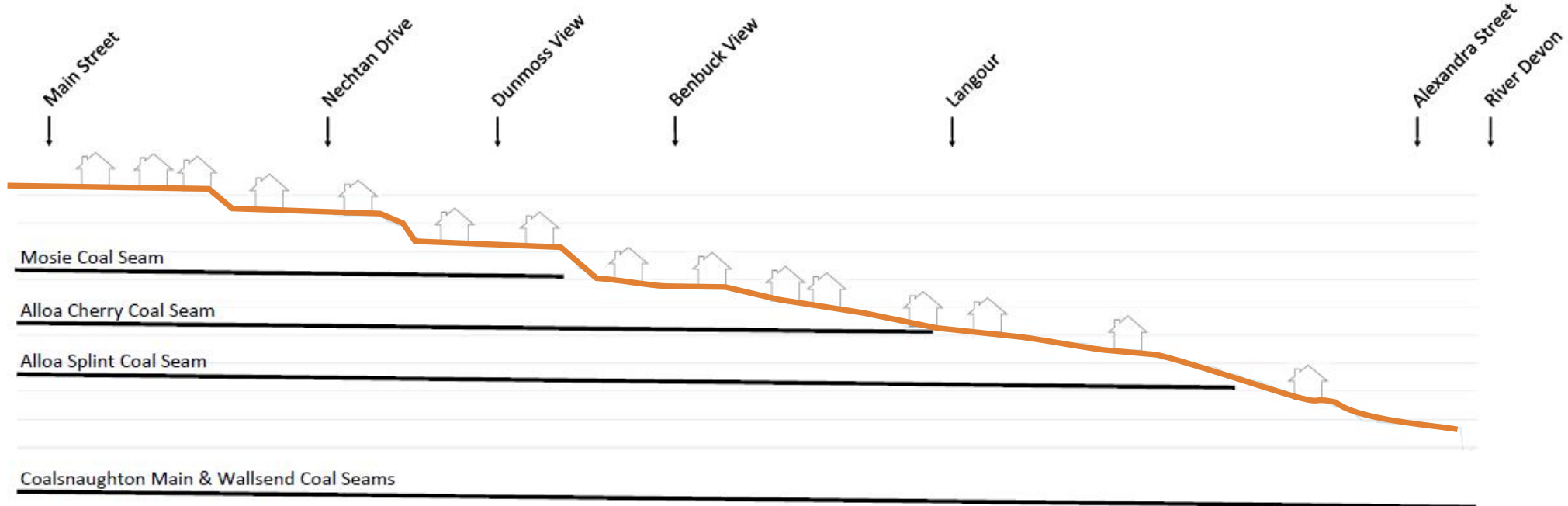


Mining beneath the area - Cross section

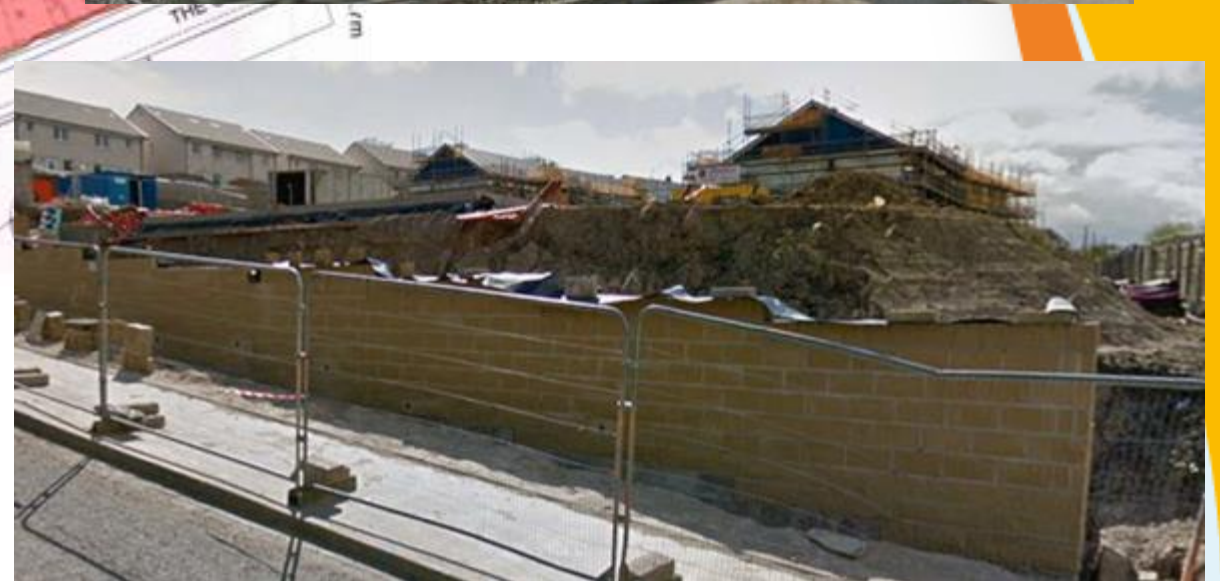


South

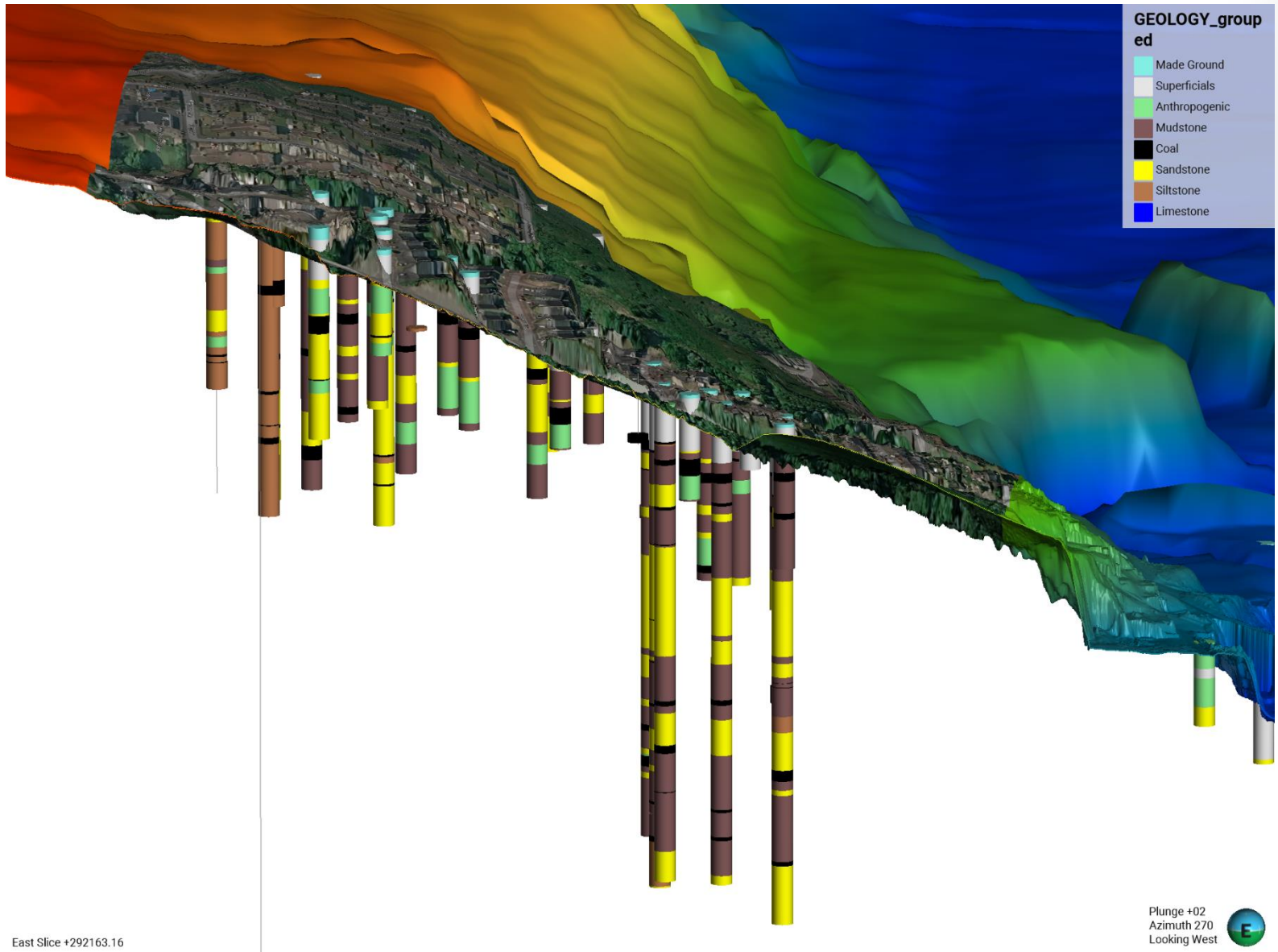
North



Construction of the development



Digital Ground Model





Data sharing

- Based on feedback from you at our last meeting we have made data available to residents on our platform which can be accessed at [Coalsnaughton: mining information: The Mining Remediation Authority](#)
- We will include a link to this in our weekly briefing

The screenshot shows the Mining Remediation Authority website. At the top, there is a search bar and a phone number: 0345 762 6848. Below the search bar is a navigation menu with options: What we do, Reports, Careers, News, In My Area, Programmes, Resources, and Contact us. The main content area features a breadcrumb trail: Home » News » Coalsnaughton: mining information. A grey box on the left contains the title 'Coalsnaughton: mining information', the publication date 'Published: June 18, 2026', and a '1 minute' read time. The main heading is 'Coalsnaughton: mining information'. Below the heading is a paragraph: 'You can view coal mining information we hold relating to Coalsnaughton and the surrounding area, for free, at: [Mining Remediation Authority Map Viewer - Coalsnaughton](#)'. Below this is a screenshot of the 'Mining Remediation Authority Map Viewer - Coalsnaughton' interface, which displays a map of the area with various layers and a legend on the right side.

We hold a collection of mine plans relating to Coalsnaughton and the surrounding area.

Next steps

LRP Multi Agency Response - keeping people safe and their well being remains our priority

Continue ground monitoring and data collection

Investigation work continuing - 56 day (8 weeks) programme
36% complete

Maintain controlled access to properties and safety measures

Support with insurance queries

Sharing information and continued weekly updates





Questions?