



Ochil and South Perthshire UK Parliamentary Constituency; Election Profile 2015

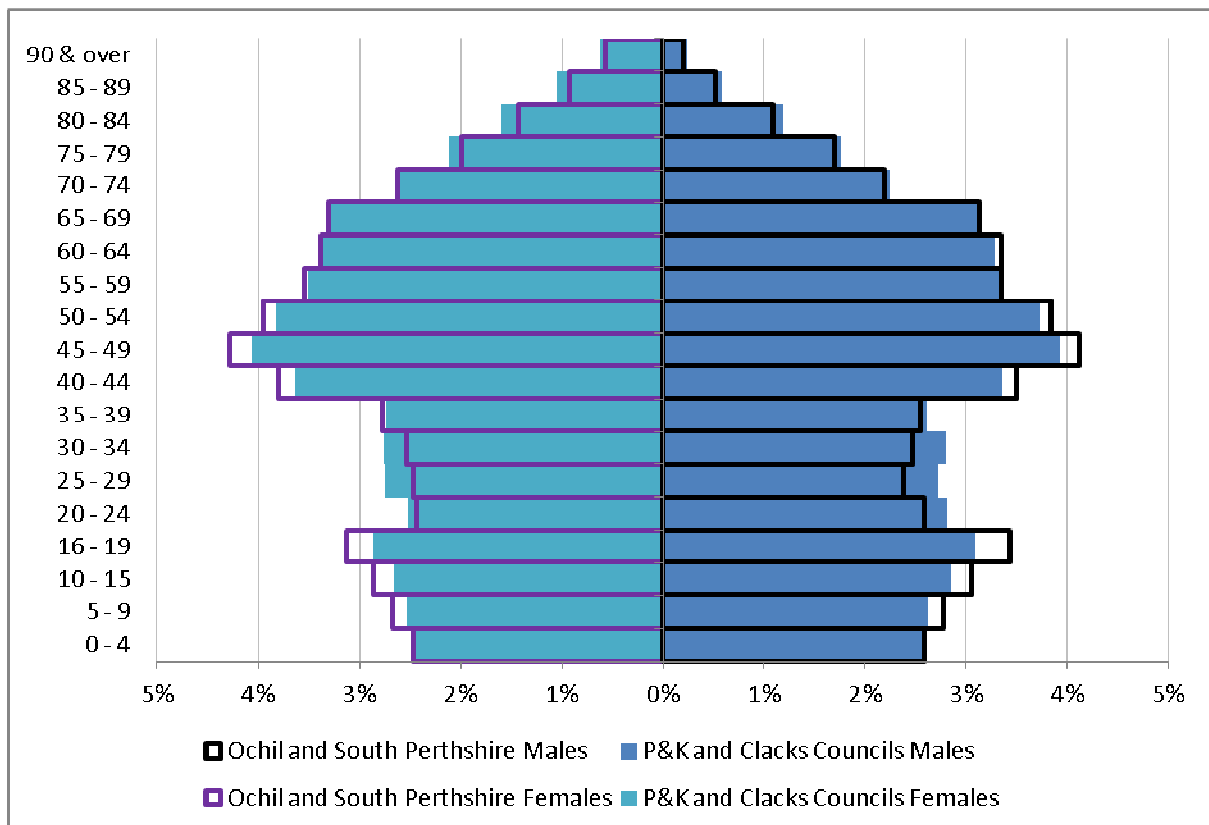
Introduction

The Ochil & South Perthshire United Kingdom Parliamentary Constituency (UKPC) covers an area of approximately 1691 square kilometres¹. In the 2010 general election the constituency had a voting turnout of 67%. This was higher than the Scottish average of 64%².

Demographics

The current population of the constituency is 100,750³ and this equates to 51% of the total population of the local authorities that the constituency includes Perth and Kinross (147,750⁴) and Clackmannanshire (51,2804) population.

Figure 1: Population Pyramid Ochil and South Perthshire Constituency; Perth and Kinross, and Clackmannanshire Council



¹ Area, Table KS101SC, Scotland’s Census 2011, National Records of Scotland (NRS)

² Electoral data for the 6 May 2010 UK Parliamentary general election, Electoral Commission

³ Estimated population by sex, single year of age and UK Parliamentary Constituency area, mid-2013, NRS

⁴ Estimated population by sex, single year of age and administrative area, mid-2013, NRS

Demographics Cont'd.

A fifth of the constituency's population resides within Alloa, a further 53% of the population lives within another settlement, the largest of which is Crieff.

Figure 2: Constituency Settlements Population Estimates mid -2008-2012⁵

Settlement Name	Total 2008 Population	Total 2010 Population	Total 2012 Population	2008-12 % Change	% of UKPC Population
Abernethy	1,430	1,470	1,470	3%	1%
Alloa	29,020	29,280	20,390	-42%	20%
Almondbank	1,270	1,090	1,420	11%	1%
Alva	4,890	4,800	4,720	-4%	5%
Auchterarder	4,610	4,760	4,620	0%	5%
Bankfoot	1,270	1,280	1,270	0%	1%
Blackford	700	700	760	8%	1%
Braco	590	590	590	0%	1%
Bridge of Earn	2,440	2,720	2,790	13%	3%
Clackmannan	3,480	3,460	3,450	-1%	3%
Comrie	1,970	1,980	1,900	-4%	2%
Crieff	7,470	7,500	7,430	-1%	7%
Dollar	2,840	2,790	2,740	-4%	3%
Dunning	970	980	930	-4%	1%
Forgandenny	560	600	590	5%	1%
Glenfarg	670	690	770	13%	1%
Kinnesswood	500	500	500	0%	0%
Kinross	4,750	4,740	4,910	3%	5%
Menstrie	2,640	2,770	2,770	5%	3%
Methven	1,080	1,070	1,200	10%	1%
Milnathort	1,920	1,980	1,910	-1%	2%
Muthill	740	760	760	3%	1%
Tillicoultry	5,960	5,840	6,010	1%	6%
Tullibody			9,530	*	9%
Not in Settlement	17,186	17,198	26,707	36%	27%

Please note that in 2012 the settlement of Alloa was split into the settlements of Alloa and Tullibody.

⁵ Mid-2008-12 Population Estimates for Settlements and Localities in Scotland, NRS

Over the last 11 years the population has grown by 8% this is higher than the Scottish average. Since the economic crisis in 2008 the population has experienced limited growth.

Figure 3: Constituency Population from 2002-2013 Time Series⁶

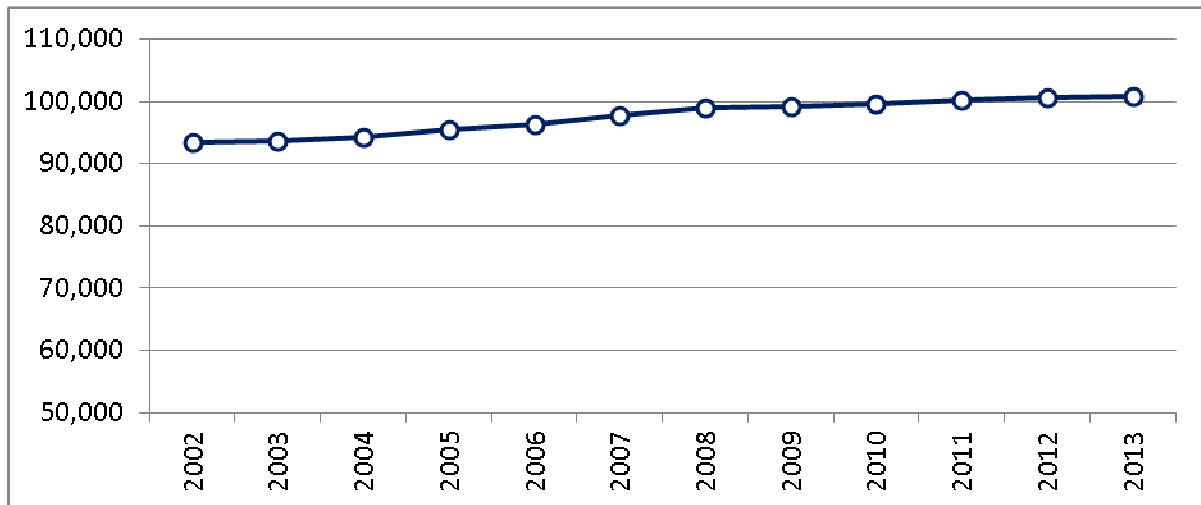
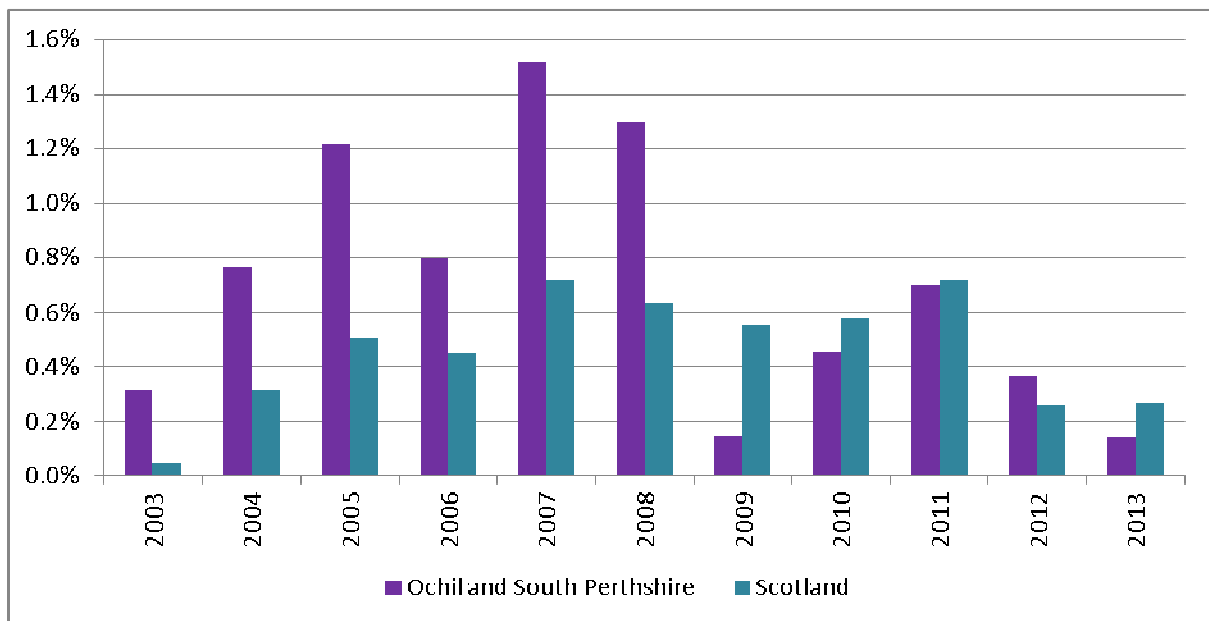


Figure 4: Year on Year Population Change, Ochil & South Perthshire Constituency and Scotland



The latest projection by NRS indicates a 24% increase in population in Perth and Kinross over the 25 year period of their projection (2012-2037). In contrast Clackmannanshire is projected to experience a contraction of the population, of 2%, over the same time period.

There are no projections calculated at constituency level.

⁶ Estimated population by persons, single year of age and UK Parliamentary Constituency (UKPC) area: 30 June 2013, NRS

Economy

In 2014 there were 3,210 enterprises⁷, the majority (89%) of which were Micro enterprises⁸ with fewer than 10 employees.

There are 29,900 employee jobs within the area, just under a third of which are part-time, this is consistent with the Scottish picture. The majority of employee jobs within the area are related to services (80%). Of the employee jobs within services, public administration, education and health is the largest segment (27%)⁹.

Figure 5: Proportion of Total Employee jobs¹⁰

	Ochil and South Perthshire	Scotland
Primary Services (A-B: agriculture and mining)	0.5%	1.7%
Energy and Water (D-E)	2.3%	1.4%
Manufacturing (C)	11.9%	7.4%
Construction (F)	5.9%	5.5%
Services (G-S)	79.5%	84%

Figure 6: Breakdown of Services (G-S) Employee Jobs

	Ochil and South Perthshire	Scotland
Wholesale and retail, including motor trades (G)	13.1%	14.7%
Transport storage (H)	2.9%	4.0%
Accommodation and food services(I)	14.2%	7.8%
Information and communication (J)	0.8%	2.7%
Financial and other business services(K-N)	16.8%	19.6%
Public admin, education and health (O-Q)	27.3%	30.4%
Other Services (R-S)	4.4%	4.8%

The gross average weekly pay for full time workers is £414.10, 20% less than the Scottish average, for females this disparity in pay increases to 23%.

Figure 7: Gross weekly pay¹¹

	Ochil and South Perthshire	Scotland	Difference %
Full-time workers	£414.10	£519.40	-20%
Male full-time workers	£462.50	£558.40	-17%
Female full-time workers	£354.80	£460.60	-23%

⁷ Inter Departmental Business Register, ONS

⁸ An Enterprise is the smallest combination of legal units (generally based on VAT and/or PAYE records).

⁹ Business Register and Employment Survey (BRES), ONS

¹⁰ Business Register and Employment Survey (BRES), ONS - Employee jobs excludes self-employed, government-supported trainees and HM Forces. Data excludes farm-based agriculture

¹¹ Annual survey of hours and earnings - workplace analysis, ONS

Economy - Unemployment

As at September 2014 there were 3,600 people unemployed, this is 7.3% of the total working age (16-64) population and this is higher than the Scottish average of 6.5%.

Figure 8: Employment and Unemployment (Oct 2013-Sep 2014)¹²

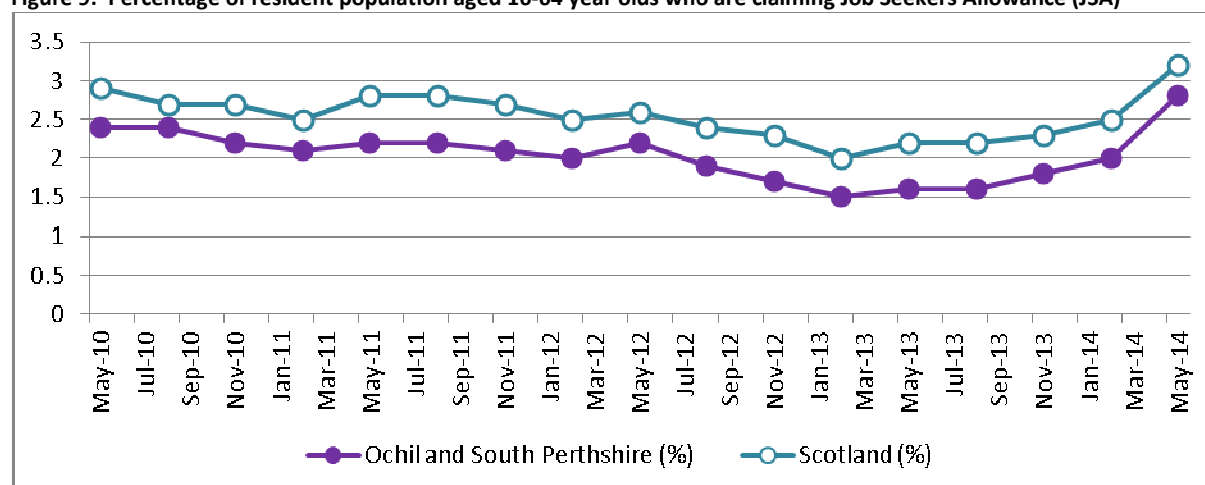
	Ochil and South Perthshire	Ochil and South Perthshire (%)	Scotland (%)
Economically active†	50,100	77.7	77.6
In employment†	46,500	72.0	72.5
Employees†	39,100	61.7	63.9
Self-employed†	6,900	9.6	8
Unemployed§	3,600	7.3	6.5

† - numbers are for those aged 16 and over, % are for those aged 16-64

§ - numbers and % are for those aged 16 and over. % is a proportion of economically active

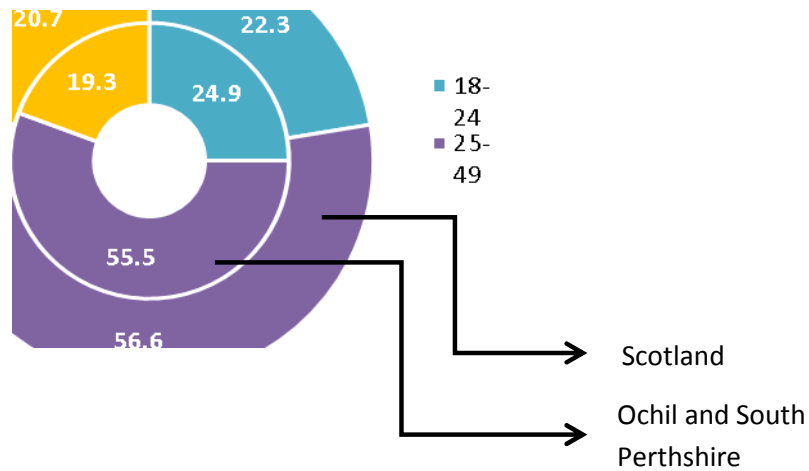
As at May 2014, 1,358 people were claiming Job Seekers Allowance (JSA), 2.2% of the total working age population. The area has consistently had a slightly lower proportion of residents claiming JSA compared to the Scottish average, however there are a higher proportion of claimants within the younger age brackets.

Figure 9: Percentage of resident population aged 16-64 year olds who are claiming Job Seekers Allowance (JSA)



¹² Annual Population Survey, ONS

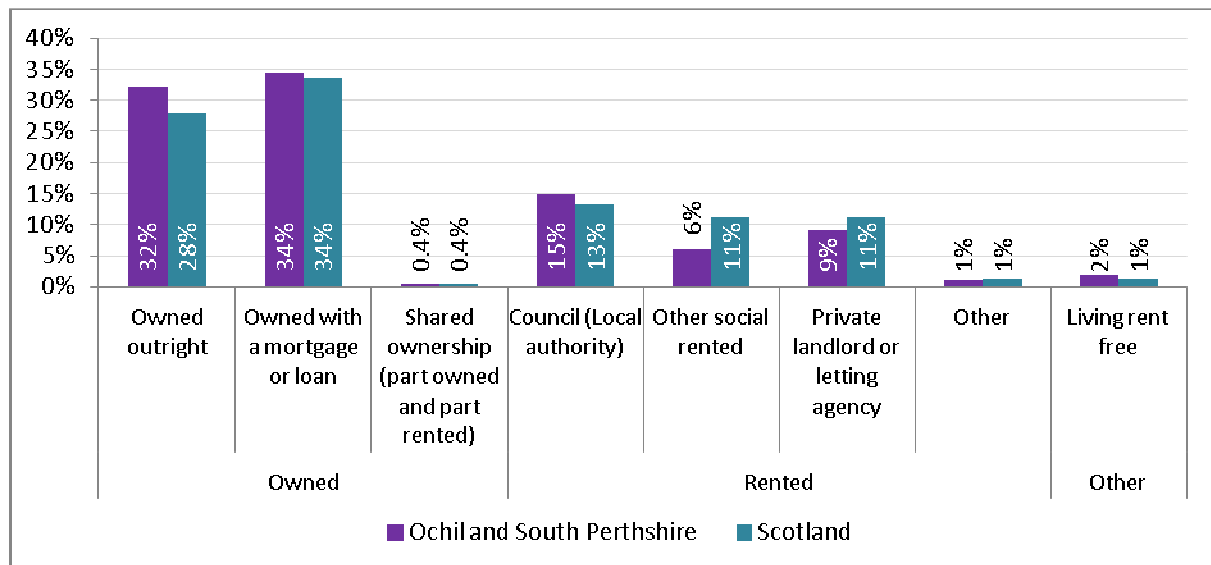
Figure 10: JSA Claimants at Jan 2015 by Age Group



Housing

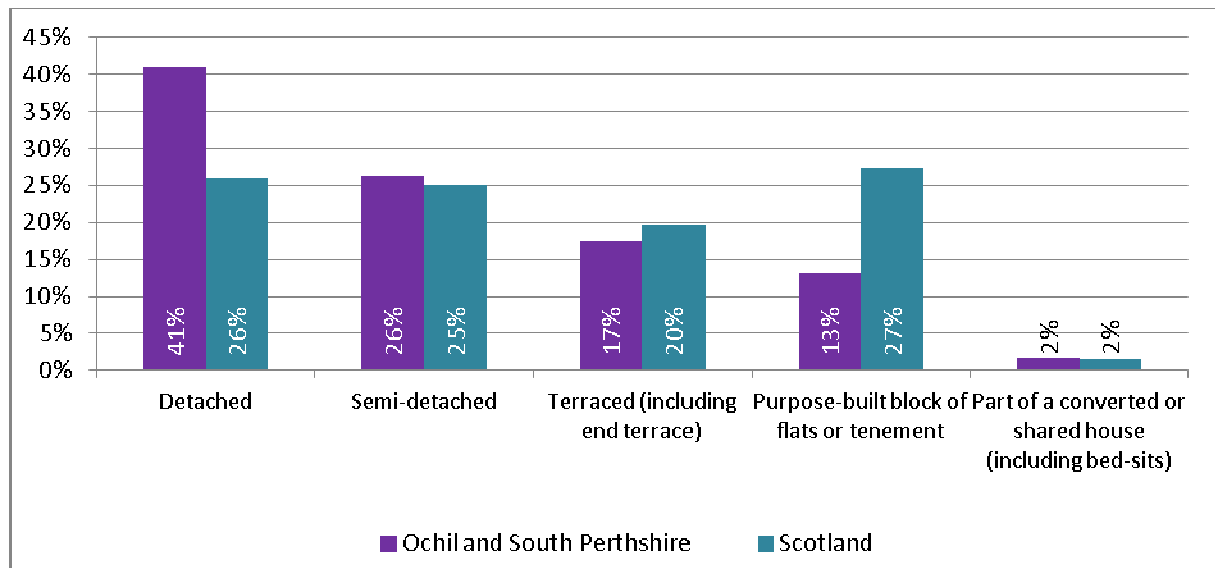
Within the constituency there are 43,439 households¹³. A breakdown of tenure and accommodation type is shown below. Within the constituency there are a lower number of households owned outright and a higher number of those rented from the Local authority. There is also a higher proportion of detached houses than that of Scotland, reflecting the areas rural nature.

Figure 11: Household Tenure¹³



¹³ KS402SC – Tenure, Scotland’s Census 2011, NRS

Figure 12: Accommodation Type¹⁴



¹⁴ QS401SC - Accommodation type, Scotland's Census 2011, NRS

Education

In 2014, there were a total of 5,928 pupils living within the constituency attending Perth and Kinross schools and 6,564 pupils attending Clackmannanshire schools.

The constituency has an improving picture of education, with a higher proportion of residents now having qualifications at various levels. For the last two years the proportions of residents with qualifications has been higher than the Scottish average.

Health

The life expectancy within the area is higher than the Scottish average for both males and females. There are a fewer deaths from coronary heart disease, cancer and cerebrovascular disease.

Deprivation

The Scottish Index of Multiple Deprivation (SIMD) is a set of 38 indicators grouped into 7 domains, income, access, education, housing, employment, crime and health. Each of the domains are weighted to provide an overall SIMD rank for each datazone. These datazones have then been ranked in deciles.

As can be seen in the chart below, which displays the distribution of datazones, the area has 18 of the total 124 datazones in the most deprived 20% in Scotland. Just under two thirds of the datazones are in decile 6 or above.

