



**Clackmannanshire  
Council**

[www.clacksweb.org.uk](http://www.clacksweb.org.uk)

**Clackmannanshire Council  
Statutory Consultation Document**

**The creation of a  
Tullibody South Campus**

**February 2016**

This Proposal Document has been issued by Clackmannanshire Council for consultation in terms of the Schools Consultation (Scotland) Act 2010. The two schools affected by this Proposal Document are Abercromby Primary School, Tullibody, and St. Bernadette's R.C. Primary School, Tullibody.

## Contents

3. Introduction
4. Purpose of the Consultation
4. Context
  - The Condition and Suitability of Schools
  - Current Condition: Abercromby Primary School, St Bernadette's R.C. Primary School, and Tullibody Civic Centre
  - Projected Rolls
  - Policy Context
  - Benefits of the Tullibody South Campus
  - Facility Requirements for Each School
  - Prior Consultation
8. The Proposal and Options for Consultation
10. Educational Benefits Statement
15. Expected Impact of the Proposal
16. Resource Considerations
17. Conclusion
17. Consultation: Distribution of the Proposal Document, Stakeholders, Process and Timescale
19. Responding to the Consultation
20. The Report on the Results of the Consultation
21. Timeline for Consultation

## **Introduction**

Clackmannanshire Council, through annual condition surveys, identifies the extent to which a school building and its grounds support high quality learning and teaching to individual children and the school community. The schools are rated in terms of 'suitability', which means their practicality, accessibility and convenience.

Through this process Abercromby Primary School was identified as exhibiting the poorest physical condition and lowest suitability rating among Clackmannanshire schools. The school also has insufficient capacity to accommodate current and predicted future numbers of pupils.

In 2015, Clackmannanshire Council instructed the Education Service to undertake an informal consultation on three options in relation to a campus for Tullibody South. This consultation was carried out between 12 May and 3 July 2015. The analysis of the responses to the informal consultation has led to the proposal to develop the Tullibody South Campus incorporating Abercromby Primary School, St. Bernadette's R.C. Primary School, a Council Nursery and a Locality Hub. The Hub will co-locate and integrate public services onto one site, helping to deliver more effective outcomes for local people and communities. The distinctive identity and values of St. Bernadette's R.C. Primary would be maintained within the proposed campus. Two alternative site options emerged from the informal consultations. These options are:

- Option A: a new Tullibody South Campus located within the grounds of the present Abercromby Primary School.
- Option B: a new Tullibody South Campus located within the grounds of the present Tullibody Civic Centre.

As required by the Schools (Consultations) Act 2010, Clackmannanshire Council is now undertaking a formal consultation in relation to the replacement of both schools within a Tullibody South Campus.

## **Purpose of this Consultation**

We are consulting on the relocation of education provision at Abercromby Primary School and St Bernadette's Primary School to a new campus in Tullibody South. We are also consulting on the most appropriate site for the campus. The feedback obtained from this consultation will inform the Council's decision on both the creation and site of the new Tullibody South Campus.

A key objective of the Schools Estate Strategy is that new schools should comply with the highest design and environmental standards and help to support 21st century learning. The Council will ensure that both options meet these criteria. There are, however, advantages and disadvantages attached to each option. The Council wish to canvass the views of a wide range of stakeholders (see page 17 and 18) as to which option will attract the better overall advantage.

The two options are set out on page 9.

The creation of a Tullibody South Campus also offers the opportunity to bring together school and community facilities, allowing the Council to reduce operating costs while creating modern leisure facilities and spaces for community use. A locality hub would be better integrated and able to meet the needs of the community, while remaining sustainable and affordable.

## **Context**

### **The Condition and Suitability of Schools**

In common with all Scottish local authorities, Clackmannanshire Council is required to assess the condition and suitability of its schools for a 21st century learning environment. The information drawn from these assessments is known as 'Core Facts' and classified within four categories: 'A', 'B', 'C' or 'D'. The category for the best condition is Category 'A'. The Council must then report these 'Core Facts' to the Scottish Government. The Council are also required to produce a School Estate Management Plan (SEMP).

The major aims of Clackmannanshire Council's SEM for the period from 2010 to 2015 are to:

- bring the condition of all schools in the Early Learning and Childcare estate to Category 'B' or higher, and maintain it at that level;
- address issues of sufficiency as they arise;
- improve the suitability of external learning, teaching and social spaces; and
- Improve dining facilities in those schools with the smallest dining space.

### **Current Condition: Abercromby Primary School**

At the meeting of Clackmannanshire Council on 5 March 2015, Elected Members were advised that the condition of Abercromby Primary School had been rated at Category 'B'. Members were advised that this rating was likely drop to Category 'C' in the near future in the absence of considerable investment in repairs. For 'suitability', the school was rated at Category 'C'.

'Suitability' is the category used to assess the capacity of a building for effective service delivery. Abercromby Primary School has both the lowest condition and 'suitability' rating within the Clackmannanshire primary school estate.

An independent survey of Abercromby Primary School, including a structural report, was carried out in June 2014. The survey report can be accessed on ClacksWeb. The survey concluded that the building will require considerable investment in order to maintain the school at Category 'B' in terms of condition.

Repairs totalling over £1 million will be required during the next five years alone, in order to remain at Category 'B' in the medium term. Further investment will be required to address 'suitability' issues and create an effective environment to deliver 21st century learning. The normal life expectancy of buildings of this type, designed and constructed to current British Standards is 60 years. The original school building is therefore operating beyond its expected design life.

In terms of accommodation, the school has the capacity to accommodate 410 pupils. The current school roll, however, is 412 pupils with a projected increase to 428 pupils by 2019.

To conclude, at present Abercromby Primary School falls short of what would be desired to fully deliver education suitable for the 21st century, and will require a high level of investment to maintain its current rating.

### **Current Condition: St Bernadette's R.C. Primary School**

St Bernadette's R.C. Primary School was rated at Category 'B' in terms of condition and 'suitability' when assessed. The school will require repairs totalling to the value of £200,000 over the next five years to retain that rating in terms of condition.

An independent survey of the condition of the building and structure of St Bernadette's R.C. Primary School was conducted on 7 August 2014. The survey report is available on ClacksWeb. The report identified that a programme of capital investment was required over a five year period to improve the internal environment along with upgrading dated mechanical and electrical installations. Investment was also required to improve the overall external appearance of the school and its surrounding site.

The roll of St Bernadette's R.C. Primary School currently stands at 112 pupils, with little change projected over the next ten year period. Current design capacity of St Bernadette's is 165.

### **Projected Rolls**

The historical, current and maximum projected rolls for each school are shown at Table 1a and 1b below:

**Table 1a**

<b>School</b>	2005	2006	2007	2008	2009	2010	2011	2012	2013	2014
Abercromby PS	402	382	378	382	404	404	393	424	430	413
St Bernadette's RC PS	85	82	74	80	81	80	83	87	82	98

**Table 1b**

<b>School</b>	01/01/16	Max Projected Roll (2015 - 26)*
Abercromby PS	412	428 (18-19)
St Bernadette's RC PS	112	120 (18-19)

\*The maximum projected school roll will be adjusted to take account of the sites that are vacated. The impact of any development would be factored in to the school rolls at the design stage to ensure that sufficient capacity is in place in both establishments.

## **Current Position: Tullibody Civic Centre**

Tullibody Civic Centre serves the inhabitants of the town and the wider area. The accommodation comprises a function hall, public library and exhibition area, and a three-court Games Hall. External facilities include two full-size grass football pitches and a floodlit Multi-Use Games Area currently used by local football groups. There is a small children's play area to the east of the site, and a public footpath around the site's eastern and southern perimeters. The Civic Centre provides facilities for a number of local groups during the day and more extensively in the evening and at weekends. Activities provided include: martial arts and wrestling classes, slimming groups, fitness classes, and activities for the over 50s. The Tullibody History Group also uses the Tullibody Heritage Centre which is part of the Tullibody Civic Centre. The grass pitches are used by various small football groups in the area.

The physical condition and appearance of the Civic Centre, give cause for concern. An independent technical appraisal of Tullibody Civic Centre in 2014 concluded that structurally the building is dated, and exhibits both tired interior space and a poor external physical appearance where previous refurbishment has not taken place. This report recommended that immediate capital investment is required to improve the existing internal environment, enhance external 'kerb appeal', prevent further elemental decay and possible future defects. Investment is also required in the medium to long term, with regard to mechanical and electrical facilities. The report is available on ClacksWeb. The report identified that a programme of capital investment was required over a five year period to improve the internal environment along with upgrading dated mechanical and electrical installations. Investment was also required to improve the overall external appearance of the facility and surrounding site.

## **Policy Context**

The proposal and options set out on page 8 to develop a campus for integrated public services which meet 21st century standards, are consistent with the Council's overall ambitions for the area.

Clackmannanshire Council has set out a cohesive policy framework, both within a partnership context in the area's Community Planning 'Single Outcome Agreement', and in the Authority's Corporate Plan. Each document links aspirations for the best possible educational experiences and outcomes for all pupils to wider priorities for the population of Clackmannanshire.

The priorities in the 'Single Outcome Agreement' that are most relevant to educational experiences are:

- Our communities are more cohesive and inclusive.
- Our people are better skilled and ready for learning and employment
- Vulnerable people and families are supported
- Health is improving and health inequalities are reducing

Clackmannanshire Council has introduced the 'Making Clackmannanshire Better' (MCB) programme in order to provide the best possible public services for the people of Clackmannanshire. MCB priorities have been informed by public opinion. Previous budget consultations carried out by Clackmannanshire Council suggested support for reducing the school estate (75% of respondents, in September 2010). In addition, the Council's budget consultation for 2014/15 found that 'the vast majority of respondents agreed that the Council should make more efficient and widespread use of Council buildings and merge school and community facilities.'

The Council's MCB initiative has prioritised:

- locating services and/or service providers alongside each other to offer a better service and reduce property costs
- integrating services with those of other public service providers to target joint resources more effectively to where they are most needed
- developing new ways of delivering services
- making the way in which we deliver services simpler, more efficient, and most importantly, easier to access

The Council's Corporate Plan aims to ensure that the skills and knowledge that young people will require in the future are consistent with the Council's aspirations to enable all learners to become successful learners, confident individuals, responsible citizens, and effective contributors.

The Education Service's Strategic Priorities include the following:

- Our learners are successful learners, confident individuals, effective contributors and responsible citizens making a positive contribution to their communities.
- Our learners enjoy physical and emotional wellbeing leading to healthy lifestyles.
- Our learners get the best start in life and are ready to succeed

Consistent with these aims and reflecting budgetary constraints, the entire school estate must be planned and managed to efficiently to achieve best value. The Council intends, however, to minimise the impact of financial savings on the quality of services, and to continue to strive to 'grow in excellence'.

### **Benefits of a Tullibody South Campus**

The Tullibody South Campus would comprise (a) Abercromby Primary School and St. Bernadette's R.C. Primary Schools and (b) civic and community services termed a Locality Hub. The Hub would co-locate and integrate local public services onto one site, helping to deliver more effective outcomes for local people and communities, whilst reducing council operating costs. The Hub will encourage a mix of public, community and voluntary service usage and involvement. The Hub will deliver a core set of local public services e.g. customer services for providing information, processing enquiries and bookings, library, public computers, wifi, plus community spaces for use by individuals and local groups. Space will be offered to Community Planning and other partner organisations to deliver their services on an outreach basis. The Hub will enable the local community to play a greater role in shaping how local services are designed and delivered and helping efforts on community regeneration.

The Tullibody South Campus as a whole affords stakeholders an opportunity to use different types of accommodation that they may not have accessed previously. For example, assembly hall and meeting spaces within a primary school can be more easily used by local groups in the evening. Similarly, creating a campus would increase access by the school populations to the civic amenities. A campus in Tullibody South would offer wide-ranging educational, social and economic benefits for the town, and be concordant with the wider Making Clackmannanshire Better programme.

From a geographical perspective, Abercromby Primary School and the Civic Centre are located at a short distance from one another. Abercromby Primary School and St Bernadette's R.C. Primary School share overlapping catchment areas, and there is less than half a mile between the buildings on their current sites.

There are clear benefits in locating the two schools and the Locality Hub within a Tullibody South Campus. In any such arrangement both schools would continue to exist as separate entities with their own identities. Both schools would retain their own Headteacher, staff, distinctive teaching areas, visions, values and identities.

**Table 2**

<b>Facility Required</b>	<b>Abercromby PS</b>	<b>St Bernadette's RC PS</b>	<b>Shared Facility</b>
Classrooms	15	6	General purpose rooms
Toilets	√	√	√
Support base			1
Meeting rooms			2
Games hall			Multi use games hall
Reception and administration	*	*	Multi use area
Nursery			√
Hygiene suite/medical room			√
Storage areas	√	√	√
HT office	√	√	X
IT & Wifi	√	√	√
Staff rooms	√	√	Rooms to be flexibly configured to support two staff areas and to be potentially combined for use outwith school hours
Flexible learning spaces	√	√	
Dining hall/social space	X	X	√

\*A single Reception and Administration Area to be created for the Campus as a whole

### **Informal Consultation**

As referred to in the Introduction on page 3, Clackmannanshire Council previously carried out an informal consultation on three options in relation to a campus for Tullibody South. The outcome of this exercise was reported to the Council's Education, Sport and Leisure Committee on 10 September 2015. The Committee report is available on ClacksWeb.

### **The Proposal and Options for Consultation**

The proposal is subject to the outcome of this consultation, the provision of education at Abercromby Primary School, Tullibody, and at St. Bernadette's R.C. Primary School, Tullibody, will be relocated to a Tullibody South Campus to be situated at either:

Option A: the current Abercromby Primary School site, or;

Option B: the present Tullibody Civic Centre site.

St Bernadette's R.C. Primary School and Abercromby Primary School would each maintain their own identity within the campus. Each school would have its own staff, management team, budget, ethos and vision. A degree of sharing of facilities such as outdoor learning space, games hall and dining facilities, would take place between the two schools.



## **Options for Consultation**

### **Option A: To build a Tullibody South Campus on the site of the existing Abercromby Primary School**

The new campus would be built within the grounds of the existing Abercromby Primary School. Education would continue to take place in the current buildings until the new premises were ready. At this point St Bernadette's R.C. Primary School would be relocated to the campus along with the children of Abercromby Primary School. Both current school buildings would then be demolished. This is called a 'Tandem Build' and would be managed in a safe and secure way. This approach has been done successfully in other local authorities.

Consideration was given to decanting the population of Abercromby Primary School during the building of the new campus. However, it was decided not to recommend this approach as it would cause considerable disruption to children's education and incur additional revenue expenditure of £1.2m.

Traffic management arrangements are already in place for Abercromby Primary School and would require only limited modification after the construction and demolition period.

Considerable joint planning with partners and interested parties would take place to resolve any stakeholder concerns (e.g. possible concerns about safety during the construction period, and by St. Bernadette's R.C. Primary School community about safe travel to and from the new campus.)

The construction cost for Option A has been estimated at £14.7m. For Option A, the Council would gain a capital receipt if the St Bernadette's R.C. Primary School site and Civic Centre site were sold for development.

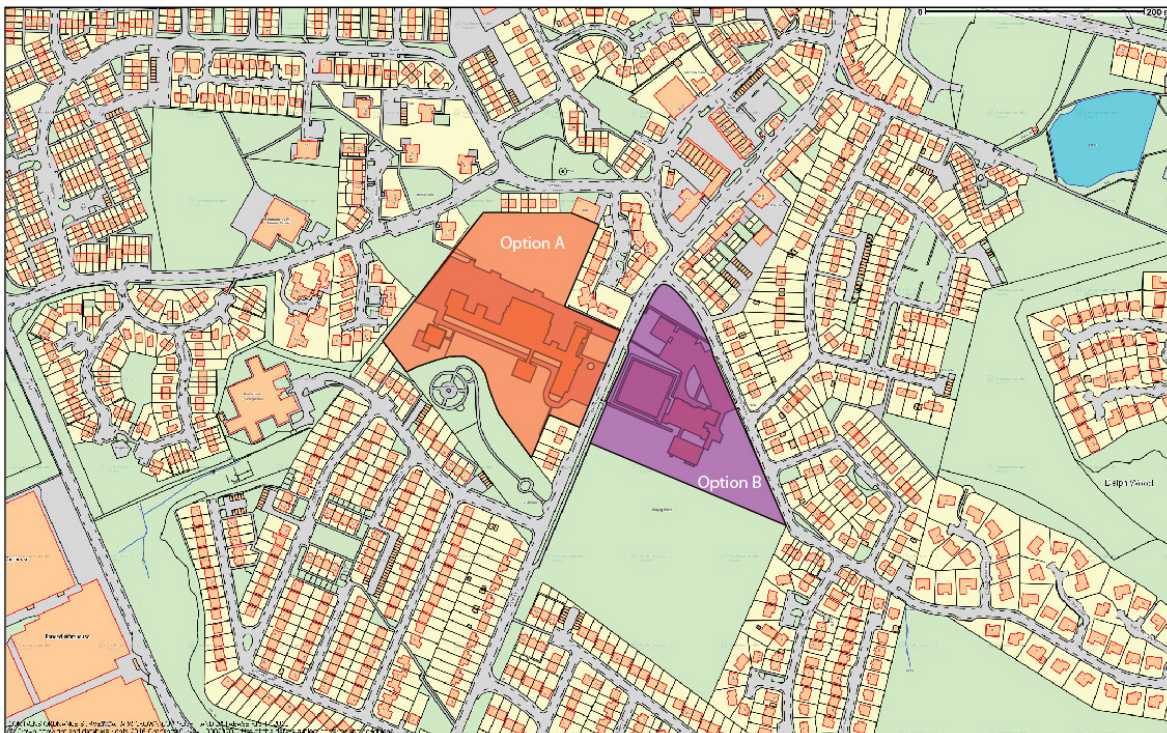
### **Option B: To build a Tullibody South Campus on the site of the present Tullibody Civic Centre.**

A Tullibody South Campus could be built on the site of the existing Civic Centre. The construction of a new school on this site would not disrupt learning as the school pupils and staff would transfer when the new schools were ready. As with Option A this development would incorporate community facilities as part of the campus. Joint planning with partners and interested parties would take place to ensure a smooth transition to the campus facilities and resolve any stakeholder concerns. Alternative provision will be offered to current users of the Civic Centre during the building phase if Option B is chosen.

The construction cost of a new building on the Civic Centre site has been estimated at £14.7m.

For Option B, the Council would gain capital receipts if the existing Abercromby and St Bernadette's sites were sold for development.

## Image of possible Tullibody South Campus sites for Option A and Option B



### Educational Benefits Statement

In line with legislative requirements detailed in the Schools (Consultation) (Scotland) Act 2010, amended through the enactment of the Children and Young People (Scotland) Act 2014, it is incumbent on the Council to produce an educational benefits statement which describes the impact the proposal might have on the pupils of any affected schools and children who would be likely to become pupils at the schools. Clackmannanshire Council is committed to raising educational attainment and ensuring that all young people have the best opportunities in life. The educational benefits that will arise from each of these proposals for children affected or likely to be affected are outlined below.

### How will pupils, staff and members of the St Bernadette's R.C. Primary School community benefit from this proposal?

The pupils, staff and families of St Bernadette's would have access to a state of the art building which is fully equipped and designed to meet pupils' needs and to deliver the Curriculum for Excellence. The school would retain its own separate identity but benefit from all the benefits of a shared campus. The condition rating of St Bernadette's is such that it would not be a priority for the Council nor could they afford to refurbish or replace the school as it is in comparatively better condition than other schools in Clackmannanshire. It would not qualify for funding from the Scottish Government Schools for the Future programme.

By moving to the campus, St Bernadette's' community will benefit from working together in an outstanding physical environment to ensure the highest possible outcomes for all our pupils.

### Learning Environment

- A new school building will create suitably sized flexible teaching areas with in-built Information Technology, modern heating, lighting and ventilation. The new school will provide a brighter, more attractive and safer environment which is fully equipped and designed to meet pupils' needs and to deliver Curriculum for Excellence.

- Flexibility will be built in to the new campus to support the different range of activities that pupils require during their school day. The existing building lacks this degree of flexibility and specialist accommodation to meet the needs of pupils and a modern curriculum.
- Since St Bernadette's was built, there have been substantial developments in agencies working together to support young people and families. The flexibility of the new accommodation will incorporate space for other agencies such as health, social care and support services to support young people.
- The co-location of community facilities alongside school facilities will encourage and support the involvement of parents in their children's education.

### **Outdoors Environment**

- The journey through education for any child in Scotland must include opportunities for a series of planned, quality outdoor learning experiences; outdoor spaces will be designed to promote learning beyond the physical classroom.
- Pupils from St Bernadette's will have access to a range of specially designated outdoor play spaces that allow for a spectrum of needs and interests to be catered for.

### **Increased Opportunities**

- Children from St Bernadette's will have access to an enhanced range of after school clubs and activities through the new accommodation, they will be able to access after school clubs that are run by either school.
- The nursery will be embedded within the school campus creating opportunities for shared learning and collaboration throughout the early level of Curriculum for Excellence. It will make the transition from nursery to primary easier for St Bernadette's children as St Bernadette's does not have a nursery and children tend to access Abercromby nursery.
- Pupils attending the nursery will have easy access to a broad range of facilities within the campus that are not currently possible, such as the proximity of dining, assembly, management and office accommodation.
- A shared campus will provide opportunities for parents from the wider community to form relationships and work together to improve outcomes for their children and young people.
- A large open multi-purpose space will accommodate joint activities as well as each school assembling individually. Performances and celebrations will be able to be shared with parents and partners.
- Children from St Bernadette's will be able to take advantage of a library that is resourced to accommodate 450 children which will provide much greater opportunities than the resources available in a school of 90 pupils. The children will also have access on campus to the resources in a community library.
- Sharing transport costs will ensure both schools are represented at local active schools sports events and competitions. This will particularly benefit St Bernadette's children as it is a smaller school which cannot benefit from economies of scale in terms of hiring buses

## **How will pupils, staff and members of the Abercromby Primary School community benefit from this proposal?**

- Abercromby Primary School is currently operating over capacity and the nursery, Primary 4 and Primary 5 classes at Abercromby Primary School are located in remote buildings. These require pupils and staff to walk outside of the building to access facilities such as dining, assembly and other school facilities. In the campus it will be possible to walk internally within the building reducing the need for pupils and staff to walk outside the building.
- Currently in Abercromby Primary School there is only sufficient space in the dining room for children who have school meals children cannot eat with their friends at lunchtime as children eating packed lunches have to eat in a separate area in the school. In the campus, children would have access to a dining area that is modern and is more in keeping with principles embodied in the guidance issued by Scottish Government in their Better Eating, Better Learning guidance
- Children attending Abercromby Primary School will benefit from working together in an outstanding physical environment to ensure the highest possible outcomes for all our pupils.

## **Learning Environment**

- A new school building will create suitably sized flexible teaching areas with in-built Information Technology, modern heating, lighting and ventilation. The new school will provide a brighter, more attractive and safer environment which is fully equipped and designed to meet pupils' needs and to deliver Curriculum for Excellence.
- Flexibility will be built in to the new campus to support the different range of activities that pupils require during their school day. The existing building lacks this degree of flexibility and specialist accommodation to meet the needs of pupils and a modern curriculum.
- Since Abercromby Primary School was built, there have been substantial developments in agencies working together to support young people and families. The flexibility of the new accommodation will incorporate space for other agencies such as health, social care and support services to support young people.
- The co-location of community facilities alongside school facilities will encourage and support the involvement of parents in their children's education.

## **Outdoors Environment**

- The journey through education for any child in Scotland must include opportunities for a series of planned, quality outdoor learning experiences; outdoor spaces will be designed to promote learning beyond the physical classroom.
- Pupils will have access to a range of specially designated outdoor play spaces that allow for a spectrum of needs and interests to be catered for.

## **Increased Opportunities**

- Children from Abercromby Primary School will have access to an enhanced range of after school clubs and activities through the new accommodation.
- Currently Tullibody after school club is based in St Bernadette's R.C. Primary School building. In the campus, it will be located in the same building as the schools, this will reduce the necessity for Abercromby Primary School pupils to leave the school campus and cross the road at the end of the school day.
- The nursery will be embedded within the school campus creating opportunities for shared learning and collaboration throughout the early level of Curriculum for Excellence.
- Pupils attending the nursery will have easy access to a broad range of facilities within the campus that are not currently possible, such as the proximity of dining, assembly, management and office accommodation.
- A shared campus will provide opportunities for parents from the wider community to form relationships and work together to improve outcomes for their children and young people.
- The pupils of Abercromby Primary School will benefit from a large open multi-purpose space will accommodate joint activities as well as each school assembling individually. Performances and celebrations will be able to be shared with parents and partners.
- A purpose built library will further enhance the children's learning as well as providing a valuable resource to the wider community.
- Sharing transport costs will ensure children from Abercromby Primary School are represented at local active schools sports events and competitions.

## **Community Ethos**

- A shared campus will provide regular opportunities for children and families from Tullibody South to interact and make strong community links.

## **Transitions**

- All pupils entering primary 1 from nursery will have seamless and meaningful transition activities throughout the academic year.

## **Teacher Learning Community**

- Staff will have more opportunities to work with a wider range of teaching and non-teaching colleagues.
- There will be increased opportunities for sharing of good practice and moderation of learning and teaching.
- There will be wider access to a range of skills within the staff which can be shared and there will be increased opportunities for bespoke staff development.

## **Health And Wellbeing**

- Modern equipment and a purpose built gymnasium will provide an excellent environment to provide entitlement to two hours quality physical activity and sport.
- Pupils will experience a safe and pleasant dining experience within a bright, modern space designed to accommodate the whole school community.

## **How will pupils, staff and members of the Abercromby nursery benefit from this proposal?**

- Abercromby nursery is located in a building that is separate from the rest of Abercromby Primary School; this means that if children wish to access the facilities of the primary school they have to go outside and into the main school building.

The new nursery will be an integral part of the Tullibody South Campus and the transition for children moving into either Abercromby Primary School or St Bernadette's R.C. Primary School will be easier as children will remain in the same building. The nursery will operate a flexible model which means that it will offer parents flexible care which meets their needs. It will also be designed to accommodate any future legislative changes such as the expansion to 1140 hours of Early Learning and Childcare.

## **Outdoors Environment**

- Nursery children will be able to benefit from significantly improved outdoor facilities that a new campus will have to offer.
- Children attending the nursery will have access to a range of specially designated outdoor play spaces that allow for a spectrum of needs and interests to be catered for.

## **Increased Opportunities**

- The nursery will be embedded within the school campus creating opportunities for shared learning and collaboration throughout the early level of Curriculum for Excellence.
- Pupils attending the nursery will have easy access to a broad range of facilities within the campus that are not currently possible, such as the proximity of dining, assembly, management and office accommodation.
- A shared campus will provide opportunities for parents from the wider community to form relationships and work together to improve outcomes for their children and young people.

## **Teacher Learning Community**

- Staff will have more opportunities to work with a wider range of teaching and non-teaching colleagues.

## **Equalities, Health and Safety**

- The campus will be fully compliant with the Disability Discrimination Act and Equalities Act ensuring that all pupils, staff and visitors have access
- Adequate personal care and changing facilities within the nursery will be of a high standard within a modern and secure school campus.

## **Next steps if the proposal is agreed by Clackmannanshire Council**

- The pupils, parents and staff of both schools, and the local community will be consulted about the design of the Tullibody South Campus, and its configuration on site.
- Careful planning of working arrangements will take place, for example for the use of shared areas. This will require sufficient 'lead-in time', and form part of the overall timeline for the development of the campus.
- Efforts will be made to not only continue but extend extra-curricular activity offered by each school.
- The provision of out of school care at St Bernadette's R.C. Primary School will be factored into the design of the campus, and management arrangements for the campus.
- It is anticipated that the new campus will open in spring 2018.

## **Expected Impact of the Proposal**

### **Temporary disruption caused by Option A**

The tandem build approach would involve building on the existing site. This would be managed by securing the build area – ensuring the safety of all pupils. The Council accept that there may be some short term disruption to learning and teaching if this model were chosen. For example, this may impact on available play space. This is a process that has been successfully used to deliver other school build projects.

### **Impact on Service Users**

Other than in relation to temporary disruption, the Council do not consider that the creation of the Tullibody South Campus will adversely affect service users:

- Pupils who attend Abercromby Primary School or St Bernadette's R.C. Primary School will receive their education in a setting that is designed for delivering it
- The proposal will not affect the rights of parents to make a placing request for their child to attend a school in an area outwith the designated catchment for their home address as determined by the Education (Scotland) Act 1980.
- The Proposal will have no impact on the opportunity for pupils at St Bernadette's R.C. Primary School to access St Modan's High School.
- The staff, pupils and Parent Councils of both schools will be fully consulted about arrangements for sharing facilities on the chosen site.
- The Council has considered the impact on pupil safety. Adaptations will be made (subject to the final design of any new building) as follows:
  - The School Travel Plan will be implemented before moving to the new site. This to include promotion of walking/cycling routes through parent evenings/leaflets with maps, including walking times.
  - The school car park entrance will be located away from the pedestrian entrance.
  - Appropriate School Crossing Patrol provision would be made
  - Cycle shelters and cycle access to the playground will be provided.

The Council considers that the proposals will not have an adverse impact on any child or staff member in terms of disability, age, gender, faith and race. Every individual will be enabled to participate in the school curriculum and activities. Specifically in terms of disability, under the terms of Equalities Act 2010, education providers must not treat disabled pupils less favourably and must make reasonable adjustments to avoid putting disabled pupils at a substantial disadvantage. The Council is committed to providing a fully accessible service to all pupils. Subject to a more detailed Equalities Impact Assessment (EIA) and consultation which will take place in relation to the design of the campus, the Council considers that there will be no negative impact on any of the protected target groups. If, in a subsequent EIA, issues are identified then these will be addressed by the Council.

### Other current users of the school buildings

Current levels of community use of the schools do not indicate that either school fulfils a particular need in the community, or it is not envisaged that moving to the Tullibody South Campus would disadvantage community users. On the contrary users access a wider range of facilities in the campus. The campus will offer enhanced facilities for leisure and recreation within Tullibody (e.g. improved changing areas) including but not restricted to indoor and outdoor sport.

### Resource Considerations

The estimated cost of constructing the Tullibody South Campus on either site is some £14.7m. At present the proposed capital allocation for the project during the period 2016/17 to 2019/20 is some £11.25m. External funding of the balance is being pursued through the Scottish Government's "Schools for the Future" Programme. On 25 January 2016 the First Minister announced a further allocation of £230 million across Scotland and Abercromby Primary School was confirmed as one of 19 schools to benefit from the funding.

The following table summarises the main financial implications based on estimated capital costs, potential capital receipts and projected revenue savings:

#### Estimated Financial Implications

	Option A	Option B
(a) Estimated Construction Cost	£14.7m	£14.7m
(b) Estimated Demolition Cost	£ 0.4m	£ 0.4m
(c) Other Estimated Site Specific Costs	£ 0.25m	£ 0.5m
(d) Estimated Total Cost	<u>£15.35m</u>	<u>£15.6m</u>
(e) Estimated Capital Receipts	(£0.579m)	(£0.765m)
(f) Potential Net Total Cost	<u>£14.771m</u>	<u>£14.835m</u>
(g) Projected Revenue Savings (pa):		
- Property Related	£200k	£200k
- Locality Hub	£ 10k	£ 10k
- Back-log Maintenance	£357k	£357k



Clackmannanshire schools are resources under the council's scheme of devolved management for schools. If both schools move to a shared campus, the allocation of staffing and resources under the scheme of devolved management would remain consistent with resources and staffing being allocated on the basis of two separate schools.

In relation to the potential capital receipts under each option, it is assumed that the two properties which are ultimately not chosen for development of the new campus will be declared surplus to operational requirements. As such, it is considered that the cleared sites will then be marketed for development, most likely for residential purposes. This is an important assumption bearing in mind the significant financial implications and the potential impact of new house-building on the catchment of the new schools.

## **Conclusion**

Clackmannanshire Council takes the view that the measures proposed in this document will improve the educational provision for pupils in both the Abercromby Primary School and St Bernadette's R.C. Primary School catchment areas. It will improve and enhance the status of education, including Catholic education, and provide 21st century learning facilities for a significant number of children in Tullibody and beyond. The creation of a Tullibody South Campus will enhance learning opportunities for children and staff in both schools, thereby enhancing the life chances of children in both schools. It will assist in developing closer links with the community and facilitate a whole range of new learning opportunities. The campus will provide the opportunity to deliver a holistic service to children, families and the wider Tullibody community. In this way, educational provision can be enhanced, our citizens can be better served and our community can have improved opportunities for development. The creation of a Tullibody South Campus also offers the opportunity to bring together school and community facilities, allowing the Council to reduce operating costs while creating modern leisure facilities and spaces for community use. A locality hub would be better integrated and better able to meet the needs of the community, while remaining sustainable and affordable.

## **Consultation arrangements: Distribution of the proposal document, stakeholders, and the consultation process**

### **Distribution of the proposal document**

A copy of this document is available on ClacksWeb

A copy of the document will be provided for:

- The Parent Council of each affected school
- The parents of pupils on the roll of each affected school
- Parents of children expected to attend the affected schools within 2 years of the date of publication of this proposal document
- The pupils at the affected schools
- The Pupil Councils at the affected schools
- The staff of the affected schools
- Trade Union representatives of the staff at the affected schools
- The Diocese of Dunkeld
- The parishioners of St Bernadette's and St John's Vianney R.C. parishes
- Tullibody Community Council
- Existing users of Tullibody Civic Centre
- Relevant users of the affected schools

- The constituency MSP
- Police Scotland
- NHS Forth Valley
- Fire and Rescue Service
- Education Scotland
- The wider community of Clackmannanshire

(\* The 'affected schools' are St Bernadette's R.C. Primary School and Abercromby Primary School.)

A copy of this document is available from:

- Clackmannanshire Council Headquarters, Kilncraigs Alloa
- Speirs Centre, Alloa
- Abercromby Primary School
- St Bernadette's RC Primary School
- Tullibody Civic Centre

This document is available in alternative formats or translated form for readers whose first language is not English. Please apply to Clackmannanshire Council, Education Service, Kilncraigs, Alloa FK10 1EB or by email [consultation@clacks.gov.uk](mailto:consultation@clacks.gov.uk)

## Stakeholders

The Council will consult a wide range of stakeholders including staff, parents, pupils, trade unions, Elected Members and members of the community. In undertaking an open public consultation the Council will consult and receive views from a broad range of stakeholders irrespective of disability; gender; sexual orientation; faith; age; and black and ethnic minorities.

## The Consultation Process

1. The full consultation timeline is on page 21
2. The proposal document will be issued to consultees and published on ClacksWeb
3. A copy will also be issued free of charge to stakeholder groups. The consultation will be publicised locally.
4. The consultation will run from 22 February to 22 April 2016. This covers a period of 34 school days in addition to the Easter holiday period.
5. Public meetings will be held on the following dates to discuss the Proposal.

**St Bernadette's R.C. Primary School      Tuesday 15<sup>th</sup> March 2016 7pm**

**Abercromby Primary School                      Tuesday 22<sup>nd</sup> March 2016 7pm**

Anyone wishing to attend the public meeting is invited to do so. The meetings, which will be convened by Clackmannanshire Council in consultation with the Parent Councils of Abercromby Primary School and St Bernadette's R.C. Primary School, will be addressed by a senior officer of the Council. A record of the attendees will be made at these meetings. A record will be taken of questions raised at the meeting, and views offered by attendees. This record will be published on the Council's website and made available upon request.

Please note that audio equipment will be used at the public meetings to amplify and record the meetings.

6. The public meeting will provide an opportunity to:
  - hear more about the proposals
  - ask questions about the proposals
  - Have your views recorded so that they can be taken into account as part of the proposal process.
7. In addition to the public meetings, information sessions will be held with the staff and Parent Councils of both schools. A meeting will also be held for the parishioners of the Roman Catholic parishes of St Bernadette's in Tullibody and St John Vianney's in Alva.
8. When the consultation document is published, a copy will be sent to Education Scotland. Education Scotland will also receive a copy of any relevant written representations that are received by the Council during the consultation period. Education Scotland will receive a minute of the public meeting and, as available (and as far as is otherwise practicable), a copy of any other relevant documentation. Education Scotland will then produce a report on the educational aspects of the proposal not later than 3 weeks after the Council have sent them all representations and documents mentioned above. The 3 week period of Education Scotland work will not begin until after the consultation period has ended. In preparing their report Education Scotland may enter the affected schools and make such reasonable enquiries of such people as they consider appropriate. Education Scotland may also make such reasonable enquiries of such other people as they consider appropriate.
9. The Education Service will review the proposal, taking account of the content of the Education Scotland report, as well as written and oral responses to the consultation document. The Council will then prepare a consultation report. This consultation report will be published in electronic and printed formats and will be promoted locally. It will be available on ClacksWeb from Clackmannanshire Council headquarters, at Tullibody Civic Centre and at the affected schools, free of charge. Anyone who made a written representation during the consultation period will be informed about the Consultation Report. The Report will include a record of the total number of written representations, a summary of the written representations, a summary of the oral representations made at the public meeting, the Authority's response to the Education Scotland Report, a copy of the Education Scotland Report, and any other relevant information, including alleged inaccuracies and how those inaccuracies have been addressed. The consultation report will also contain the Proposal, including any revisions that have been made as a result of the Education Scotland Report and the representations (both written and oral) that it received. The report will be published and available for further consideration for a period of 3 weeks.
10. After a minimum of 3 weeks following the publication of the consultation report, Clackmannanshire Council will consider the consultation report, along with other relevant documentation. The Council will then take a decision with regard to the creation of a Tullibody South Campus, including the location of such a campus.

### **Responding to the Consultation**

Interested parties are invited to respond to the proposal by taking part in online survey available via ClacksWeb.

Submissions can be made by writing to the Clackmannanshire Council, Education Service, Kilncraigs, Alloa FK10 1EB or by email: [consultation@clacks.gov.uk](mailto:consultation@clacks.gov.uk)

Those wishing to respond are invited to state their relationship with the school, for example, pupil, parent, carer, grandparent, teacher in school, member of the community, etc. Responses from Parent Councils, staff and Pupil Councils are especially welcome.

Those sending a response should be aware that their response will be open to public scrutiny and may be supplied to anyone making a reasonable request to see it. If they do not wish their response to be made publicly available, they should clearly state 'I wish my response to be considered as confidential with access restricted to Elected Members and officials of Clackmannanshire Council'. Otherwise it will be assumed that the person making the response agrees to it being made publicly available. All submitted responses will be provided to Education Scotland.

Responses should be made to the proposal no later than close of business on 22 April 2016.

Following the consultation process the Head of Education will prepare a report on the results of the consultation for consideration at a future meeting of Clackmannanshire Council.

### **The Report on the Results of the Consultation**

The Consultation Report will contain the following information:

- The number of written representations received
- A summary of representations made at public meeting
- A summary of all written and oral representations and the Council's response to them
- The Council's response to the Education Scotland Report
- The full text of the Education Scotland Report
- A statement of how the authority reviewed the proposal in the light of the responses to the Consultation and the Education Scotland Report
- Details of any omissions or inaccuracies and actions taken to correct them

The report will be available in both electronic and paper format. It will be made available to the public at Clackmannanshire Council Headquarters, Kilncraigs, Alloa, FK10 1EB, and on the Council's website and at both of the affected schools. All persons who make written representations must be informed of the publication of the consultation report.

### **Corrections**

If the Council is notified of any inaccuracy or omission in this consultation or where an inaccuracy or omission is discovered, the Council will investigate and inform the notifier of their decision and their reasons for reaching a decision. The Council will invite the notifier to make representations if he or she disagrees with the Council's decision. Where an omission or inaccuracy relates to a material consideration, the Council will publish a corrected consultation document, send the corrected Paper to Education Scotland, and issue a notice to all consultees correcting the inaccuracy or providing the omitted information, and where appropriate reissuing of the consultation document. This may require a revision to the timescale for the consultation period. In that event, consultees and Education Scotland will be advised.

### **Map Data**

Any Ordnance included within this document is provided by Clackmannanshire Council under licence from Ordnance Survey in order to fulfil its public function in relation to this public proposal. Persons viewing this mapping should contact Ordnance Survey Copyright for advice where they wish to licence Ordnance Survey mapping data for their own use.

### **Timeline for Consultation**

Consultation Period Begins 22<sup>nd</sup> February 2016

Public Consultation Meeting St Bernadette's R.C. Primary School 15<sup>th</sup> March 2016 7pm

Public Consultation Meeting Abercromby Primary School 22<sup>nd</sup> March 2016 7pm

Consultation Closes 22<sup>nd</sup> April 2016

Estimated Education Scotland Report on Consultation Publication Date 6<sup>th</sup> May 2016

Clackmannanshire Council response to Consultation Report 13<sup>th</sup> June 2016

Decision by Clackmannanshire Council 11<sup>th</sup> August 2016

This consultation document and all other paperwork can be accessed electronically on the Clackmannanshire Council website. Feedback can be returned electronically to [consultation@clacks.gov.uk](mailto:consultation@clacks.gov.uk) or by post to Clackmannanshire Council, Education Service, Kilncraigs, Alloa FK10 1EB



**Clackmannanshire  
Council**

[www.clacksweb.org.uk](http://www.clacksweb.org.uk)

Clackmannanshire Council  
Education Service,  
Kilncraigs,  
Alloa FK10 1EB