

## Introduction

Deprivation, broadly understood as lack of services, goods and opportunities, has been the focus of the British and Scottish governments for years.

Through a wide range of national policies, initiatives and approaches (Social Inclusion Partnerships, The Fairer Scotland, Achieving Our Potential: A Framework to Tackle Poverty and Income Inequality in Scotland) the Scottish Government has committed to tackling deprivation and social disadvantage.

The Scottish Index of Multiple Deprivation has been developed to provide an insight into the way small areas operate and function in relation to the whole country and other geographies within Scotland. It allows the central and local governments to identify areas of high deprivation levels in order to eradicate social and economic inequalities through directing resources and monitoring progress.

The Scottish Index of Multiple Deprivation (SIMD) uses a variety of domains to attempt to draw a relative picture of the *wealth* of the Scottish population. It explores a range aspects such as social, health, crime and financial through an array of national indicators.

Altogether, the SIMD uses an array of indicators and although they vary between the four countries, thus make each index of multiple deprivation (IMD) distinct, most indicators of employment and income are shared by all countries and are, therefore, comparable. The two domains are major factors of deprivation and contribute to more than half of the weight of the SIMD.

By computing and weighting all indicators in each datazone (aggregation of 500 - 1000 persons), the Scottish Index of Multiple Deprivation provides a relative ranking of the most (1) and least deprived (6, 505) areas in Scotland.

A number of consultations (exploring issues of datazone boundaries, benefit system, income and employment domains) has been conducted to improve the SIMD. The results of the consultations will shape the methodology of the next publication of the SIMD (in 2015).

Because the current SIMD (2012) is based on 2001 datazone boundaries and the current benefit system, it is broadly comparable with the previous SIMDs. However it will not be the case with future publications.

## Key findings:

### Scotland

- Deprivation has become less concentrated – in 2004 nearly half of all datazones identified as the 10% most deprived were found in Glasgow, whereas in 2012 this has dropped to 35.8%.
- Over three quarters of all 15% most deprived areas has appeared in the index in its previous editions (2004, 2006 and 2009).
- The five most deprived areas in Scotland are:
  1. S01005247 – an area of the Ferguslie Park in Paisley
  2. S01003582 – Possil Park in Glasgow
  3. S01003564 – Keppochhill in Glasgow
  4. S01005265 – Ferguslie area, Paisley
  5. S0100325 – Parkhead West and Barrowfield area, Glasgow
- The least deprived area is S01001929 found in Craiglockhart in Edinburgh.

- 742,200 people live in the 15% most deprived areas in Scotland.
- *Relatively* large increases in the proportion of datazones falling in the 15% most deprived areas was seen in North Lanarkshire, Fife, Renfrewshire and East Ayrshire.
- *Relatively* large decreases in the proportion of datazones falling in the 15% most deprived areas was seen in Glasgow City, Edinburgh City, West Lothian, Aberdeen City and South Lanarkshire.
- Across Scotland, all local authorities have seen numbers of employment deprived people increase since the SIMD 2009. Overall, 12.8% of the working age population in Scotland is employment deprived. This equates to over 420,000 people.
- More than 700,000 (13.4%) people in Scotland are income deprived.
- Glasgow City (followed by Inverclyde) has the highest proportion (44.4%) of datazones falling in the 15% most health deprived areas in Scotland.
- Almost a quarter of the 20% most deprived areas in Scotland in the education domain are found in Glasgow City.
- Nearly half of Scotland's island local authorities are access deprived. In contrast, Edinburgh, Glasgow and Dundee show hardly any deprivation in this field.
- Dundee City has seen the biggest increase in the proportion of the 15% most crime deprived datazones (increase from 16.8% in 2009 to 25.7% in 2012).

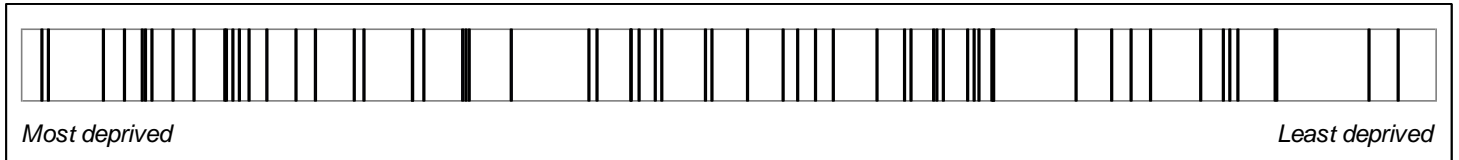
## **Clackmannanshire**

- 14 of Clackmannanshire's datazones fall in the 15% most deprived areas in Scotland.
- Alloa South and East remain the most deprived area in Clackmannanshire with two datazones (S01000836 and S01000841) found in the 5% most deprived areas in Scotland.
- Only one datazone (S01000854 – in Sauchie) has moved out of the 15% most deprived areas in Scotland.
- 3 new datazones in Clackmannanshire (S01000866 – found in Tullibody North and Glenochil, S01000874 – in Fishcross, Devon Village and Coalsnaughton, and S01000835 – in Clackmannan, Kennet and Forestmill) have moved into the 15% most deprived areas in Scotland.
- S01000833 (found in Clackmannan, Kennet and Forestmill intermediate zone) has moved up the most in the SIMD 2012 ranking.
- S01000858 in Tullibody South has fallen the most in the 2012 Scotland-wide ranking.
- The level of income and employment deprivation in Clackmannanshire is higher than in Scotland as a whole.
- 14 datazones within Clackmannanshire are amongst the 15% most deprived areas in Scotland in the income and employment domains (an increase from 12 in the SIMD 2009 across the two domains).
- 11 of Clackmannanshire's datazones fall in the 15% most deprived areas in Scotland in the education domain (a rise from 9 in the 2009 SIMD).
- 10 of Clackmannanshire's datazones fall in the 15% most deprived areas in Scotland in the crime domain (a decline from 12 in the SIMD 2009).
- Clackmannanshire has seen the largest fall in the proportion of datazones in the 15% most health deprived areas in Scotland (down from 12.5% in 2009 to 6.3% in 2012). A similar trend has been recorded across the Forth Valley Health Board.

## Analysis of Clackmannanshire's datazones in the Scottish Index of Multiple Deprivation 2012

There are 64 datazones in Clackmannanshire, the majority of which (similarly to the SIMD 2009), fall in the middle and more deprived deciles in SIMD 2012.

The barcode chart below shows Clackmannanshire's datazones in the Scottish-wide ranking. 14 of 64 (21.9%) Clackmannanshire's datazones are amongst the 15% most deprived areas in



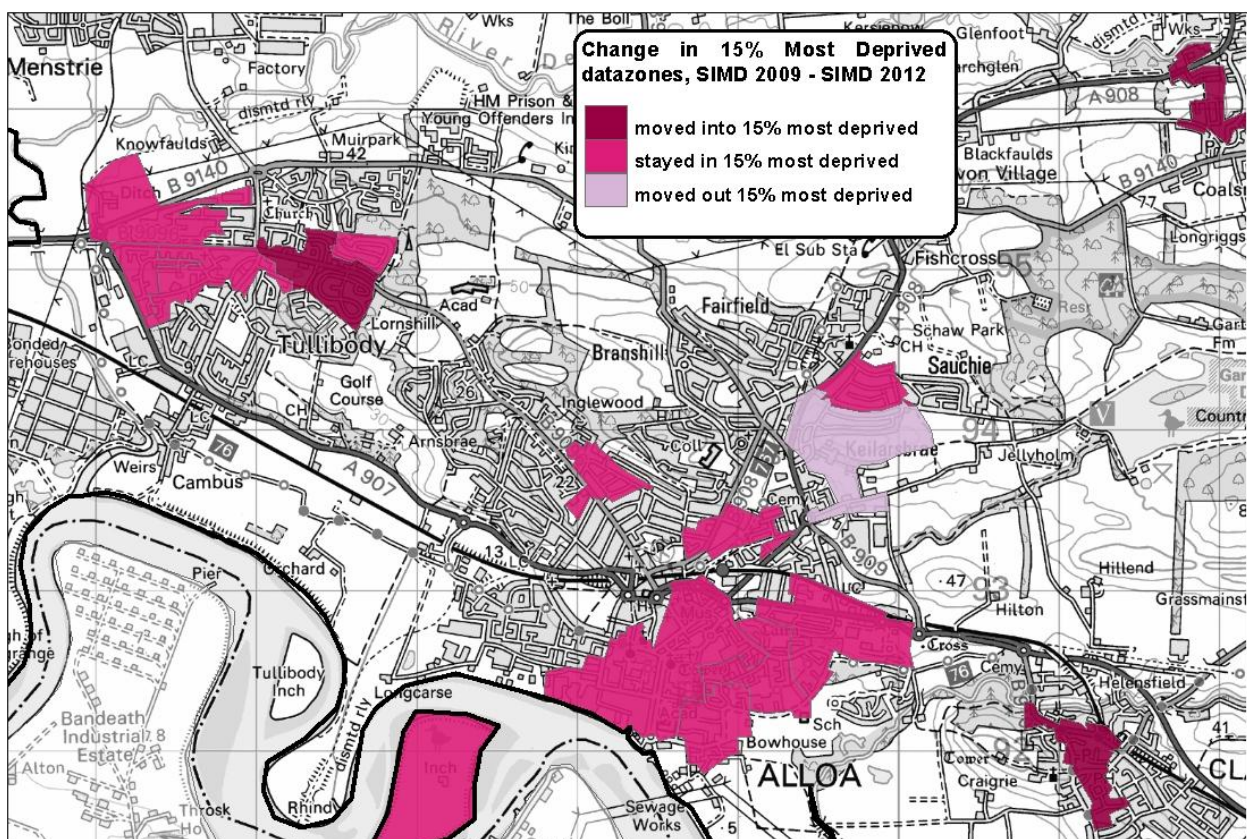
Scotland. It is an increase on 2009 when only 12 (18.8%) datazones fell in the 15% most deprived areas group in Scotland.

On the whole, 3 new datazones have fallen into the 15% most deprived areas group since the SIMD 2009. These are:

- S01000866 (Tullibody North and Glenochil),
- S01000874 (Fishcross, Devon Village and Coalsnaughton)
- S01000835 (Clackmannan, Kennet and Forestmill)

In contrast, only one datazone - S01000854 (Sauchie) has moved out of the 15% most deprived datazones in Scotland.

The map below illustrates change in the 15% most deprived datazones in Clackmannanshire between the two most recent SIMDs: 2009 and 2012.



Reproduced by permission of Ordnance Survey on behalf of HMSO. © Crown copyright and database right (2012). All rights reserved. Ordnance Survey Licence number 100024655.

**Figure 1 Change in the 15% most deprived areas in Clackmannanshire, 2009 - 2012**

The most deprived datazone in Clackmannanshire remains S01000836 (Alloa South and East). Along with S01000841, which also forms part of Alloa South and East, the datazones are amongst the 5% most deprived areas in Scotland.

Ranked 107 and 196 (respectively) in the SIMD 2012, the areas have in fact relatively improved on the SIMD 2009 where they were ranked 92 and 121 correspondingly.

The datazone which has improved most is S01000833 (found in Clackmannan, Kennet and Forestmill intermediate zone) moving from the 4<sup>th</sup> to the 5<sup>th</sup> decile of the most deprived areas in Scotland.

On the other hand, the area which has deteriorated most since 2009 is S01000858 (Tullibody South). Although it has dropped by 817 points in the Scotland-wide ranking, it is still one of Clackmannanshire's 30% least deprived areas (a drop from Clackmannanshire's 20% least deprived areas in the SIMD 2009).

The table below shows the number of datazones in intermediate geographies which have improved, stayed the same or worsened since the SIMD 2009 by deciles.

Intermediate geography	Worsened	Stayed the same	Improved
<i>Alloa North</i>	1	3	1
<i>Alloa South and East</i>		5	1
<i>Alloa West</i>		2	1
<i>Alva</i>	4	2	1
<i>Clackmannan, Kennet and Forestmill</i>	1	2	2
<i>Dollar and Muckhart</i>		2	3
<i>Fishcross, Devon Village and Coalsnaughton</i>	1	2	
<i>Menstrie</i>		2	1
<i>Sauchie</i>	2	4	2
<i>Tillicoultry</i>		7	
<i>Tullibody North and Glenochil</i>	1	3	
<i>Tullibody South</i>	3	2	
<b>Grand Total</b>	<b>16</b>	<b>36</b>	<b>12</b>

Figure 2 Number of datazones in each intermediate geography which have improved, stayed the same or worsened since the SIMD 2009 by deciles

## Individual domains

The following sections present results of individual components of the SIMD 2012.

### Income domain

In the SIMD 2012, 16% of the population of Clackmannanshire (8, 100<sup>1</sup>) were income deprived - higher than the 13% across Scotland as a whole.

On the income domain, 14 of Clackmannanshire's datazones (21.9%) are amongst the 15% most deprived areas in Scotland (up from 12 in 2009). All of them (with the exception of one) are amongst the 15% most deprived areas in the overall 2012 SIMD ranking.

<sup>1</sup> mid-2010 population numbers were used in the SIMD 2012

The most income deprived datazone in Clackmannanshire (which is also amongst the 5% most income deprived areas in Scotland) remains S01000836 - found in Alloa South and East.

### Employment domain

Similarly to the income domain, the level of employment deprivation in Clackmannanshire is higher than the Scottish average. 16% of the population of Clackmannanshire is employment deprived as opposed to 13% across Scotland as a whole. This trend has not changed since the SIMD 2004 was published.

Fourteen out of 64 Clackmannanshire's datazones are amongst the 15% most deprived datazones in Scotland on the employment domain (up from 12 in 2009). All datazones but one fall in the 15% most deprived areas in the overall SIMD 2012 ranking.

The most employment deprived datazone in Clackmannanshire is S01000836<sup>2</sup> (Alloa South and East). It is also one of four areas of Clackmannanshire which fall in the 5% most deprived areas in Scotland.

### Health domain

The level of health deprivation has been falling in Clackmannanshire since 2004, slightly rising in 2006 though. The number of datazones in the 15% most deprived areas in Scotland fell to 4 (6.3%) in 2012 – a decrease from 8 (12.5%) in 2009.

Datazone S01000867 (Tullibody South) has the highest level of health deprivation and is the only datazone in Clackmannanshire which falls in the 10% most health deprived areas in Scotland.

### Education domain

Eleven out of 64 (17.2%) Clackmannanshire's datazones are amongst the 15% most deprived areas in Scotland – an increase from 9 (14.1%) in 2009.

The most education deprived area in Clackmannanshire remains S01000841 (Alloa South and East), however it has moved from 41 to 164 in the SIMD ranking since its 2009 version. The above mentioned datazone is also one of four in Clackmannanshire which fall in the 5% most education deprived datazones in Scotland.

### Housing domain

Due to small sample sizes and exploration of a variety of housing indicators, which proved unsuitable, the housing domain has not been updated and remains the same as in the previous editions of SIMD (2004, 2006 and 2009).

There are no housing areas in Clackmannanshire which fall in the 15% most deprived datazones in Scotland. The most deprived area (ranked 1728) and falling in the 30% most housing deprived datazones remains S01000870<sup>3</sup> (Tullibody North and Glenochil).

---

<sup>2</sup> This is a change on 2009 when the datazone was ranked the 2<sup>nd</sup> most deprived area in Clackmannanshire

<sup>3</sup> S01000870 remains the most housing deprived areas in Clackmannanshire since 2004.

## Access domain

Only two datazones: S01000896 (Dollar and Muckhart) and S01000842 (Clackmannan, Kennet and Forestmill) have access deprivation levels which fall in the 15% most deprived areas in Scotland.

The datazone in Dollar and Muckhart is (and has been since 2009) amongst the 10% most access deprived areas in Scotland.

## Crime domain

In comparison to the SIMD 2009, the number of Clackmannanshire's datazones in the 15% most deprived areas in Scotland has fallen from 13 (20.3%) to 10 (15.6%) in 2012.

The most deprived datazone in Clackmannanshire (and one of the 5% most deprived areas in Scotland) remains S01000837 (Alloa South and East). It needs to be stressed that it has improved only by one point since 2009.

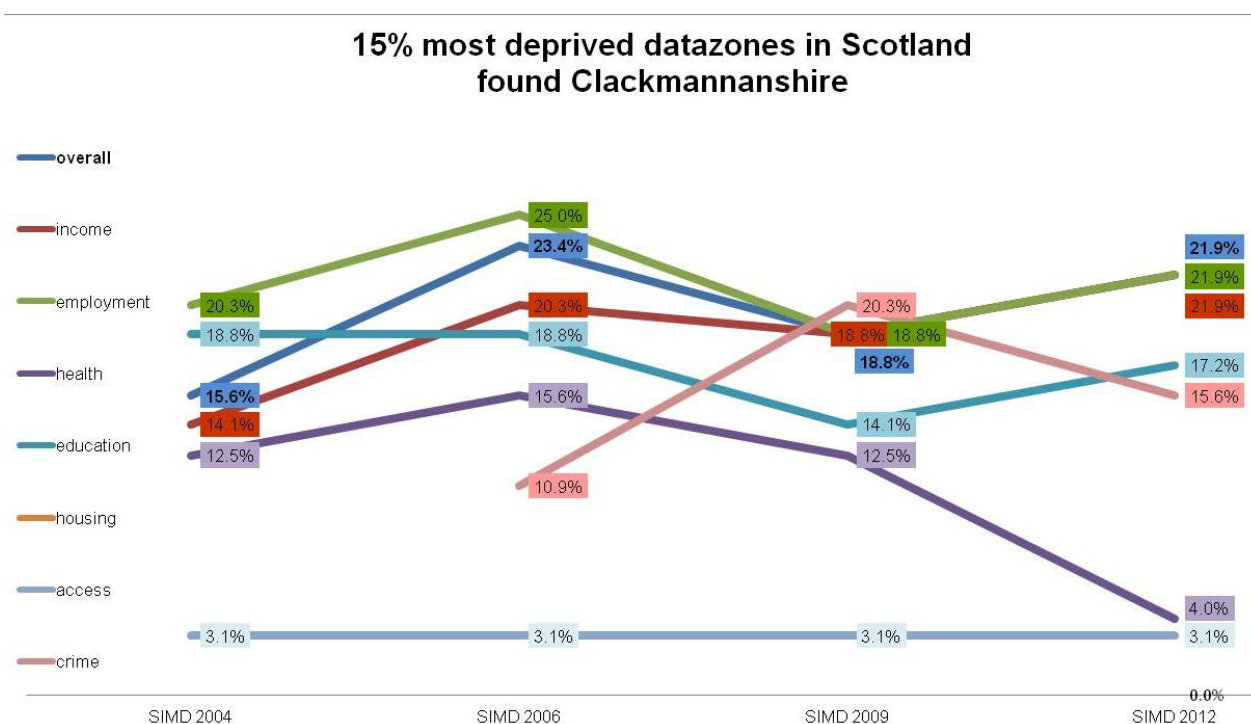
## Conclusions

The number of datazones in Clackmannanshire which fall in the 15% most deprived areas in Scotland has increased to 14 (SIMD 2012) from 12 since the SIMD 2009.

Although, the S01000836 datazone (found in Alloa South and East) remains the most deprived area in Clackmannanshire (and one of the 5% most deprived areas in Scotland), it has in fact improved by 15 points since the SIMD 2009.

S01000885 (an area of Tillicoultry) has given way to S01000878 (a datazone in Alva) as the least deprived area in Clackmannanshire and is one of the 5% least deprived areas in Scotland.

The following tables illustrate the proportion (Fig 3) and the change in relative positions (Fig 4) of Clackmannanshire's datazones<sup>4</sup> falling in the 15% most deprived areas in Scotland between 2004 and 2012.



<sup>4</sup> Location of individual datazones within Clackmannanshire can be found in Fig 5

**Figure 3 Proportion of the 15% most deprived datazones in Scotland within Clackmannanshire**

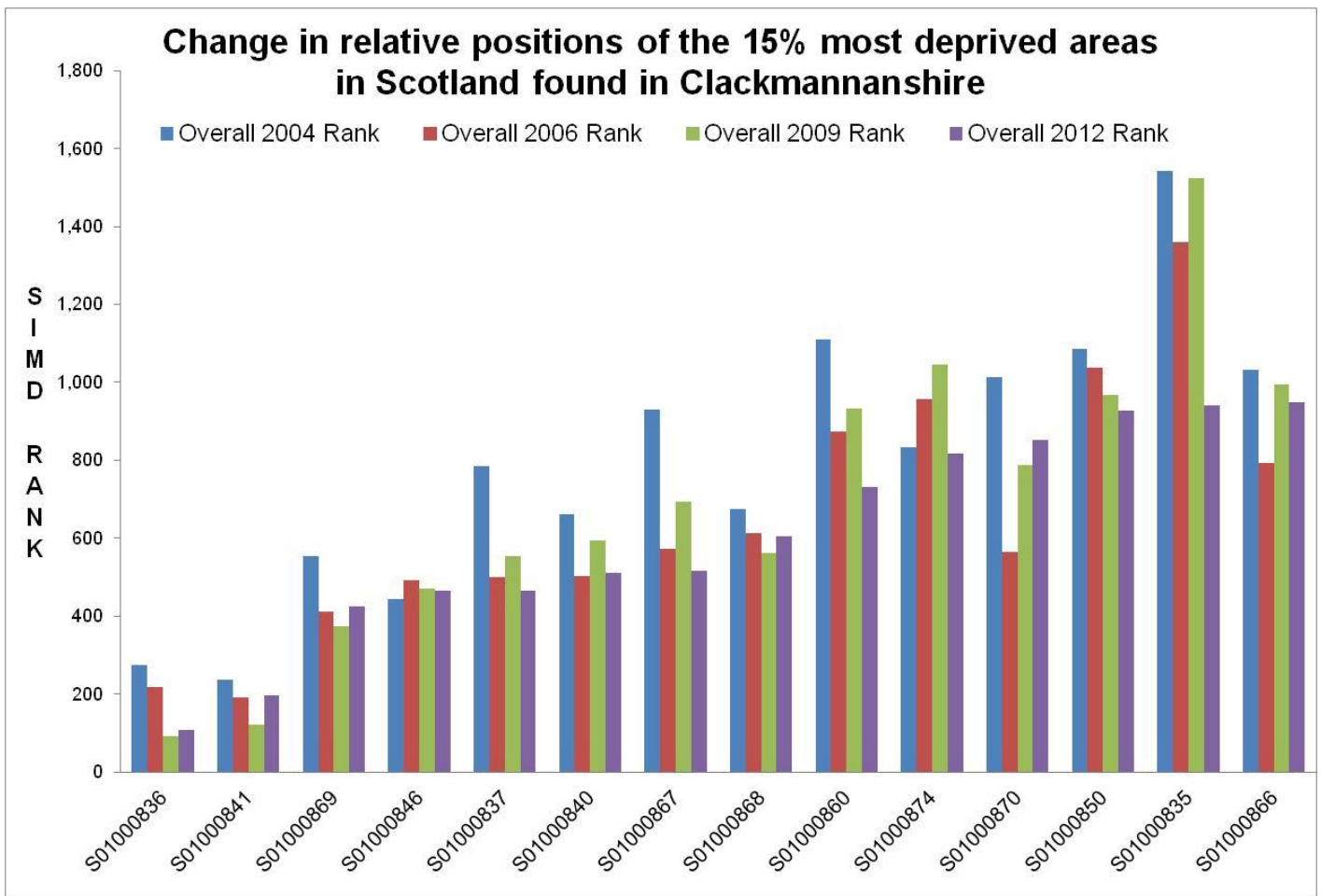


Figure 4 Change in relative positions of the 15% most deprived datazones in Scotland (SIMD 2012-based) found in Clackmannanshire, 2004 - 2012

Datazone	Intermediate geography
S01000835	Clackmannan, Kennet and Forestmill
S01000836	Alloa South and East
S01000837	Alloa South and East
S01000840	Alloa South and East
S01000841	Alloa South and East
S01000846	Alloa South and East
S01000850	Alloa North
S01000860	Sauchie
S01000866	Tullibody North and Glenochil
S01000867	Tullibody South
S01000868	Tullibody South
S01000869	Tullibody North and Glenochil
S01000870	Tullibody North and Glenochil
S01000874	Fishcross, Devon Village and Coalsnaughton

Figure 5 Datazones and corresponding intermediate geographies