



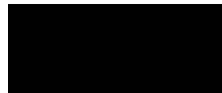
**(VARIOUS STREETS, SAUCHIE)  
(TEMPORARY NO PARKING) ORDER 2023**

The Clackmannanshire Council, in exercise of the powers conferred on them by Section 14 of the Road Traffic Regulation Act 1984 as amended by the Road Traffic (Temporary Restriction) Act 1991 and of all other powers enabling them in that behalf, hereby make the following Order.

1. This Order may be cited as "The Clackmannanshire Council (Various Streets, Sauchie) (Temporary No Parking) Order 2023" and notwithstanding the date hereof, the Schedule shall come into operation at 0800 hours on Monday 27<sup>th</sup> November 2023 until 1600 hours on Friday 29<sup>th</sup> March 2024 (only when traffic management is in situ).
2. The effect of this Order is that there will be no parking at any time (only when traffic management is in situ) during:

The period from 0800 hours on Monday 27<sup>th</sup> November 2023 until 1600 hours on Friday 29<sup>th</sup> March 2024 (only when traffic management is in situ), on the section of roads described in Schedule. The temporary prohibition of parking is required for SGN mains replacement.

**DATED THIS NINETH DAY OF NOVEMBER, TWO THOUSAND AND TWENTY THREE**



Pete Leonard  
**Strategic Director (Place)**

Clackmannanshire Council  
Kilncraigs  
ALLOA  
FK10 1EB

<b>SCHEDULE</b>	
<b>List of Roads</b>	<b>Section of road over which a temporary prohibition of parking is applicable from 0800 hours on Monday 27<sup>th</sup> November 2023 until 1600 hours on Friday 29<sup>th</sup> March 2024.</b>
Main Street, Sauchie (unclassified)	Both Sides - From its junction with A908 southwards until its junction with Braeside, a distance of 130 metres or thereby.
A908 Main Street, Sauchie	West Side – from its junction with Craigbank, northwards for a distance of 85 metres thereby.
Sprotwell Terrace, Sauchie	Both Sides - From its junction with Schaw Court northwards until its junction with Schawpark Avenue, a distance of 182 metres or thereby.
Schaw Court, Sauchie	Both Sides - From its junction with Sprotwell Terrace, westwards for a distance of 70 metres or thereby.
Gartmorn Road, Sauchie	Both Sides - From its junction with Sprotwell Terrace eastwards for a distance of 56 metres or thereby.
Gartmorn Road, Sauchie	Both Sides - From its junction with Posthill, eastwards for a distance of 400 metres or thereby.

A908 Hallpark, Sauchie	Both Sides - From its junction with Hallpark roundabout southwards, for a distance of 415 metres or thereby.
Parkhead Road, Sauchie	Both Sides - From its junction with Hallpark roundabout westwards until its junction with B908 Parkhead Road, a distance of 110 metres or thereby.
Keilarsbrae, Sauchie	Both Sides - From its junction with Rosebank southwards until a point 30 metres south of its junction with Millers Lade Avenue, a distance of 135 metres or thereby.
Keilarsbrae, Sauchie	Both Sides - From its junction with Schaw Court southwards for a distance of 61 metres or thereby.

**THE CLACKMANNANSHIRE COUNCIL**  
**(VARIOUS STREETS, SAUCHIE)**  
**(TEMPORARY NO PARKING) ORDER 2023**

**STATEMENT OF REASONS FOR MAKING THE ORDER**

The temporary prohibition of parking is required for SGN mains replacement.



Pete Leonard  
**Strategic Director (Place)**

Clackmannanshire Council  
Kilncraigs  
ALLOA  
FK10 1EB

### **The Clackmannanshire Council (Various Streets, Sauchie) (Temporary No Parking) Order 2023**

The Council has made "The Clackmannanshire Council (Various Streets, Sauchie) (Temporary No Parking) Order 2023, under the Road Traffic Regulation Act 1984 (as amended) on 9<sup>th</sup> November 2023: where there will be a temporary no parking at **Main Street, Sauchie (unclassified)** (Both Sides - From its junction with Braeside, a distance of 130 metres or thereby). **A908 Main Street, Sauchie** (West Side – from its junction with Carigbank, northwards for a distance of 85 metres or thereby). **Sprotwell Terrace, Sauchie** (Both Sides - From its junction with Schawpark Avenue, a distance of 182 metres or thereby). **Schaw Court, Sauchie** (Both Sides - From its junction with Sprotwell Terrace, westwards for a distance of 70 metres or thereby). **Gartmorn Road, Sauchie** (Both Sides - From its junction with Sprotwell Terrace eastwards for a distance of 56 metres or thereby). **Gartmorn Road, Sauchie** (Both Sides - From its junction with Posthill, eastwards for a distance of 400 metres or thereby). **A908 Hallpark, Sauchie** (Both sides – From its junction with Hallpark roundabout southwards, for a distance of 415 metres or thereby). **Parkhead Road, Sauchie** (Both Sides – From its junction with Hallpark roundabout westwards until its junction with B908 Parkhead Road, a distance of 110 metres or thereby). **Keilarsbrae, Sauchie** (Both Sides – From its junction with Rosebank southwards until a point 30 metres south of its junction with Millers Lade Avenue, a distance of 135 metres or thereby). **Keilarsbrae, Sauchie** (Both Sides – From its junction with Schaw Court southwards for a distance of 61 metres or thereby). The order runs from 0800 hours on Monday 27<sup>th</sup> November 2023 until 1600 hours on Friday 29<sup>th</sup> March 2024 (only when traffic management is in situ). The temporary prohibition of parking is required for SGN mains replacement. Full details are available on [www.clacks.gov.uk](http://www.clacks.gov.uk)

**THE CLACKMANNANSHIRE COUNCIL**  
**(VARIOUS STREETS, SAUCHIE)**  
**(TEMPORARY NO PARKING) ORDER 2023**

The Clackmannanshire Council has made the above named Order under Section 14 of the Road Traffic Regulation Act 1984 (as amended) on 9<sup>th</sup> November 2023.

The effect of this Order is that there will be no parking at any time during the period from 0800 hours on Monday 27<sup>th</sup> November 2023 until 1600 hours on Friday 29<sup>th</sup> March 2024 (only when traffic management is in situ), on the section of roads described in Schedule. The temporary prohibition of parking is required for SGN mains replacement.

A copy of the Order, together with a copy of the relative plan, is available on [www.clacks.gov.uk](http://www.clacks.gov.uk)



Pete Leonard  
**Strategic Director (Place)**

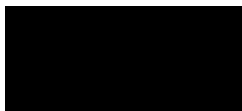
Clackmannanshire Council  
 Kilncraigs  
 ALLOA  
 FK10 1EB

<b>SCHEDULE</b>	
<b>List of Roads</b>	<b>Section of road over which a temporary prohibition of parking is applicable from 0800 hours on Monday 27<sup>th</sup> November 2023 until 1600 hours on Friday 29<sup>th</sup> March 2024.</b>
Main Street, Sauchie (unclassified)	Both Sides - From its junction with A908 southwards until its junction with Braeside, a distance of 130 metres or thereby.
A908 Main Street, Sauchie	West Side – from its junction with Craigbank, northwards for a distance of 85 metres thereby.
Sprotwell Terrace, Sauchie	Both Sides - From its junction with Schaw Court northwards until its junction with Schawpark Avenue, a distance of 182 metres or thereby.
Schaw Court, Sauchie	Both Sides - From its junction with Sprotwell Terrace, westwards for a distance of 70 metres or thereby.
Gartmorn Road, Sauchie	Both Sides - From its junction with Sprotwell Terrace eastwards for a distance of 56 metres or thereby.
Gartmorn Road, Sauchie	Both Sides - From its junction with Posthill, eastwards for a distance of 400 metres or thereby.
A908 Hallpark, Sauchie	Both Sides - From its junction with Hallpark roundabout southwards, for a distance of 415 metres or thereby.
Parkhead Road, Sauchie	Both Sides - From its junction with Hallpark roundabout westwards until its junction with B908 Parkhead Road, a distance of 110 metres or thereby.
Keilarsbrae, Sauchie	Both Sides - From its junction with Rosebank southwards until a point 30 metres south of its junction with Millers Lade Avenue, a distance of 135 metres or thereby.
Keilarsbrae, Sauchie	Both Sides - From its junction with Schaw Court southwards for a distance of 61 metres or thereby.

**THE CLACKMANNANSHIRE COUNCIL**  
**(VARIOUS STREETS, SAUCHIE)**  
**(TEMPORARY NO PARKING) ORDER 2023**

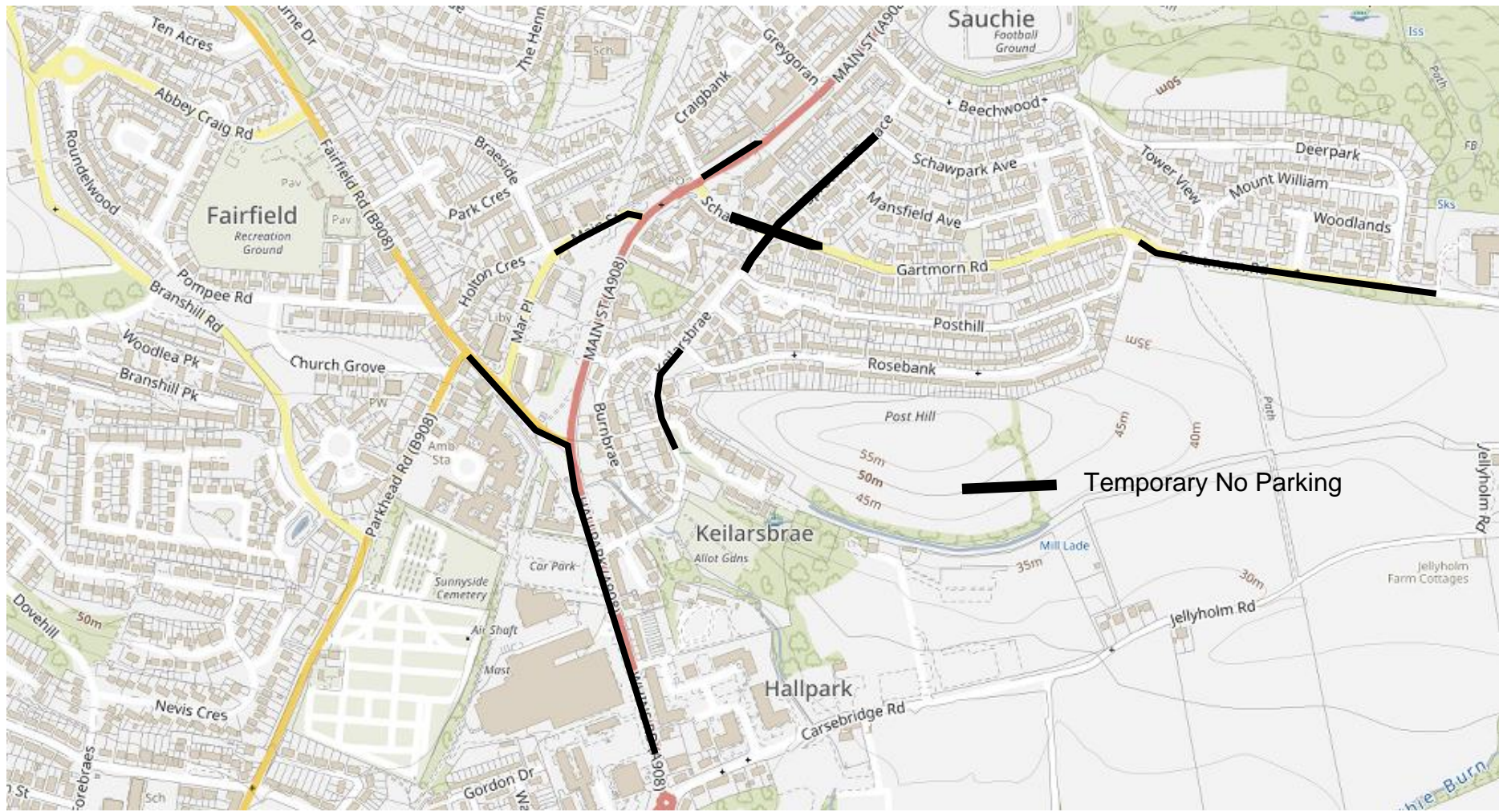
This is the plan referred to in The Clackmannanshire Council (Various Streets, Sauchie) (Temporary No Parking) Order 2023.

Made by Clackmannanshire Council on 9<sup>th</sup> November 2023.



Pete Leonard  
**Strategic Director (Place)**

Clackmannanshire Council  
Kilncraigs  
ALLOA  
FK10 1EB



TTRO2023\_057 Various Streets, Sauchie - Temporary No Parking