



**(NEWTONSHAW, SAUCHIE)  
(TEMPORARY CLOSURE) ORDER 2016**

The Clackmannanshire Council, in exercise of the powers conferred on them by Section 14 of the Road Traffic Regulation Act 1984 as amended by the Road Traffic (Temporary Restrictions) Act 1991 and of all other powers enabling them in that behalf, hereby make the following Order.

1. This Order may be cited as "The Clackmannanshire Council (Newtonshaw, Sauchie) (Temporary Closure) Order 2016" and notwithstanding the date hereof shall come into operation on the 22<sup>nd</sup> June 2016.
2. The effect of this Order shall be to close to vehicles:-  
The period from 0800 hours on Monday 1<sup>st</sup> August 2016 for a period of 3 weeks or until completion on the section described in the Schedule attached. The temporary closure is required for resurfacing works.

**DATED THIS TWENTY SECOND DAY OF JUNE, TWO THOUSAND AND SIXTEEN**

Garry Dallas  
**Executive Director**

Clackmannanshire Council  
Kilncraigs  
ALLOA  
FK10 1EB

<b>SCHEDULE</b>	
<b>List of Roads</b>	<b>Section of road over which temporary road closure is applicable from 0800 hours on Monday 1<sup>st</sup> August 2016 for a period of 3 weeks or until completion.</b>
Newtonshaw, Sauchie	From its junction with Greygoran south, west then northwards, for a distance of 257 metres or thereby.  Access where possible for residents.

**THE CLACKMANNANSHIRE COUNCIL**  
**(NEWTONSHAW, SAUCHIE)**  
**(TEMPORARY CLOSURE) ORDER 2016**

**STATEMENT OF REASONS FOR MAKING THE ORDER**

The order is required for resurfacing works.

Garry Dallas  
**Executive Director**

Clackmannanshire Council  
Kilncraigs  
ALLOA  
FK10 1EB

### **The Clackmannanshire Council (Newtonshaw, Sauchie) (Temporary Closure) Order 2016**

The Council has made "The Clackmannanshire Council (Newtonshaw, Sauchie) (Temporary Closure) Order 2016", under the Road Traffic Regulation Act 1984 (as amended) on 22<sup>nd</sup> June 2016: to close to vehicles at **Newtonshaw, Sauchie** from its junction with Greygoran south, west then northwards, for a distance of 257 metres or thereby. Access where possible for residents. The order runs from 0800 hours on Monday 1<sup>st</sup> August 2016 for a period of 3 weeks or until completion, and is required for resurfacing works. Full details are available on [www.clacksweb.org.uk](http://www.clacksweb.org.uk) or may be examined at Clackmannanshire Council's Offices, Kilncraigs, Alloa, FK10 1EB, and any Council Office/Library, during normal office hours.

**THE CLACKMANNANSHIRE COUNCIL**  
**(NEWTONSHAW, SAUCHIE)**  
**(TEMPORARY CLOSURE) ORDER 2016**

The Clackmannanshire Council has made the above named Order under Section 14 of the Road Traffic Regulation Act 1984 (as amended) on 22<sup>nd</sup> June 2016.

The effect of this Order shall be to close to vehicles:-

The period from 0800 hours on Monday 1<sup>st</sup> August 2016 for a period of 3 weeks or until completion in the section described in the Schedule attached. The temporary closure is required for resurfacing works.

A copy of the Order, together with a copy of the relative plan, is available on [www.clacksweb.org.uk](http://www.clacksweb.org.uk) or may be examined at Clackmannanshire Council's Offices, Kilncraigs, Alloa, FK10 1EB, and any Council Office/Library, during normal office hours free of charge.

Garry Dallas  
**Executive Director**

Clackmannanshire Council  
Kilncraigs  
ALLOA  
FK10 1EB

<b>SCHEDULE</b>	
<b>List of Roads</b>	<b>Section of road over which temporary road closure is applicable from 0800 hours on Monday 1<sup>st</sup> August 2016 for a period of 3 weeks or until completion.</b>
Newtonshaw, Sauchie	From its junction with Greygoran south, west then northwards, for a distance of 257 metres or thereby.  Access where possible for residents,

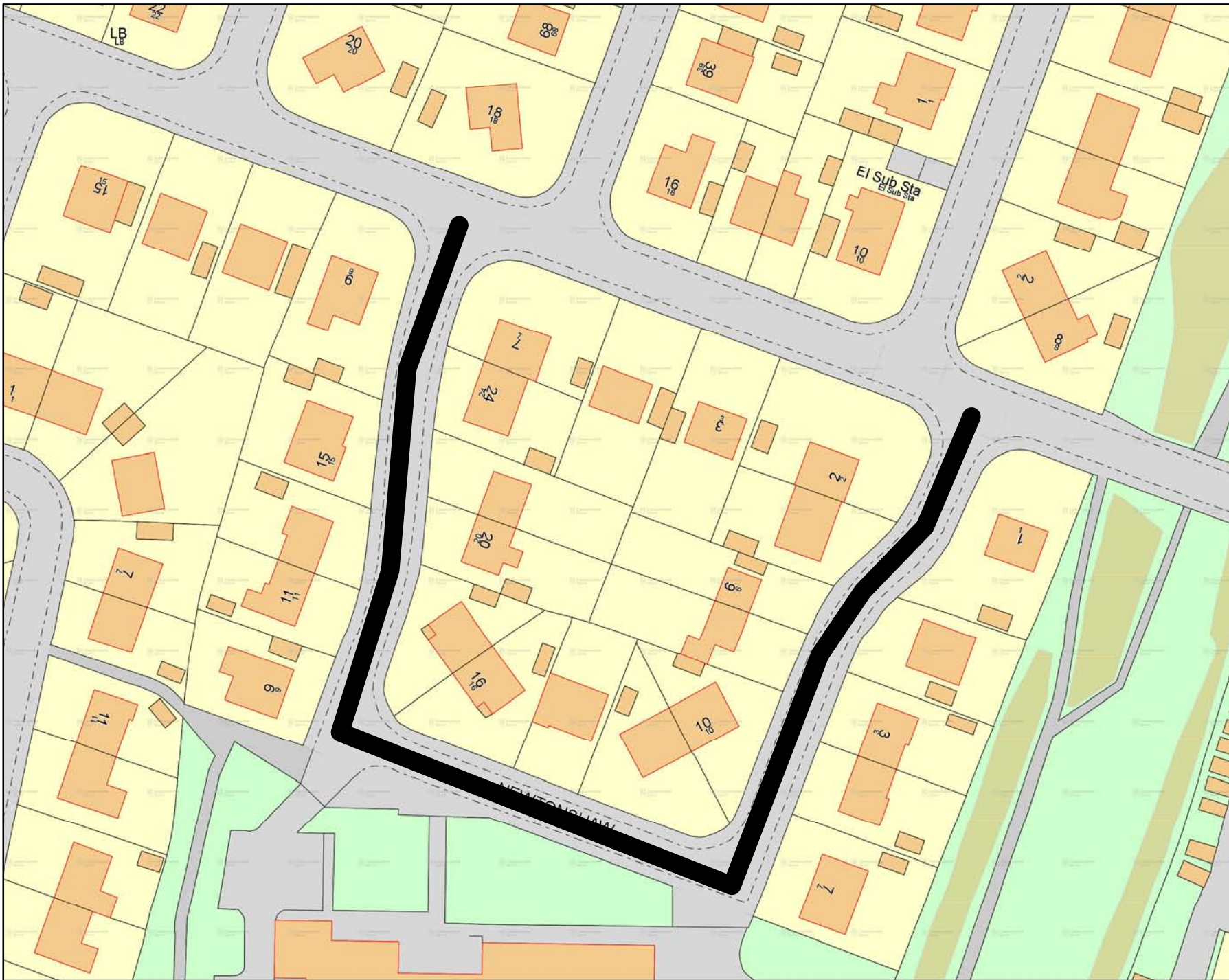
**THE CLACKMANNANSHIRE COUNCIL**  
**(NEWTONSHAW, SAUCHIE)**  
**(TEMPORARY CLOSURE) ORDER 2016**

This is the plan referred to in the Clackmannanshire Council (Newtonshaw, Sauchie) (Temporary Closure) Order 2016.

Made by Clackmannanshire Council on 22<sup>nd</sup> June 2016.

Garry Dallas  
**Executive Director**

Clackmannanshire Council  
Kilncraigs  
ALLOA  
FK10 1EB



Scale : NTS  
Paper Size : A4

Date: June 2016

 **Clackmannanshire Council**  
[www.clacksweb.org.uk](http://www.clacksweb.org.uk)

Services to Communities  
Kilncraigs  
Greenside Street  
Alloa  
FK10 1EB

Tel: 01259 450 000 Fax: 01259 727 452  
[development\\_services@clacks.gov.uk](mailto:development_services@clacks.gov.uk)

