



**(VARIOUS STREETS, CLACKMANNANSHIRE)
(TEMPORARY CLOSURE) ORDER 2015**

The Clackmannanshire Council, in exercise of the powers conferred on them by Section 14 of the Road Traffic Regulation Act 1984 as amended by the Road Traffic (Temporary Restrictions) Act 1991 and of all other powers enabling them in that behalf, hereby make the following Order.

1. This Order may be cited as "The Clackmannanshire Council (Various Streets, Clackmannanshire) (Temporary Closure) Order 2015" and notwithstanding the date hereof shall come into operation on the 27th July 2015.

2. The effect of this Order shall be to close to vehicles:-
 The period from 0800 hours and 1700 hours between Monday 27th July 2015 and Monday 31st August 2015 for a period of 1 day on the section described in the Schedule attached. The temporary closure is required for resurfacing works and patching works, these are weather and squad dependent.

DATED THIS TWENTY FOURTH OF JUNE, TWO THOUSAND AND FIFTEEN

Garry Dallas
Executive Director

Clackmannanshire Council, Kilncraigs, ALLOA, FK10 1EB

SCHEDULE	
List of Road	Section of road over which temporary road closure is applicable for a period of 1 day from 0800 hours and 1700 hours between Monday 27th July 2015 and Monday 31st August 2015. Weather and squad dependent. When dates are confirmed residents, Bus Companies and Emergency Services will be informed.
B908 Collylands to Alva	From its junction with B9140 northwards until the start of the 30mph limit, a distance of 1490 metres or thereby.
Diversion Route	Via B9140, A908, A91, B908 and vice versa.
Lovers Loan, Dollar	From its junction with A91 southwards to its junction with Park Place, a distance of 105 metres or thereby.
Diversion Route	Via Park Place and vice versa.
Beauclerc Street/Back Road, Alva	From its junction with Queen Street westwards to a point outside Monadail, a distance of 520 metres or thereby.
Diversion Route	Via Back Road, Grodwell Drive, A91, Queen Street and vice versa.

THE CLACKMANNANSHIRE COUNCIL
(VARIOUS STREETS, CLACKMANNANSHIRE)
(TEMPORARY CLOSURE) ORDER 2015

STATEMENT OF REASONS FOR MAKING THE ORDER

The order is required for resurfacing works and patching works, these are weather and squad dependent.

Garry Dallas
Executive Director

Clackmannanshire Council
Kilncraigs
ALLOA
FK10 1EB

The Clackmannanshire Council (Various Streets, Clackmannanshire) (Temporary Closure) Order 2015

The Council has made "The Clackmannanshire Council (Various Streets, Clackmannanshire) (Temporary Closure) Order 2015", under the Road Traffic Regulation Act 1984 (as amended) on 24th June 2015: to close to vehicles at B908 Collylands to Alva from its junction with B9140 northwards until the start of the 30mph limit, a distance of 1490 metres or thereby (Diversion Route: Via B9140, A908, A91 B908 and vice versa); Lovers Loan, Dollar from its junction with A91 southwards to its junction with Park Place, a distance of 105 metres or thereby (Diversion Route: Via Park Place and vice versa); and Beauclerc Street/Back Road, Alva from its junction with Queen Street westwards to a point outside Monadail, a distance of 520 metres or thereby (Diversion Route: Via Back Road, Grodwell Drive, A91, Queen Street and vice versa). The order runs for a period of 1 day from 0800 hours and 1700 hours between Monday 27th July 2015 and Monday 31st August 2015 and is required for resurfacing works and patching works, these are weather and squad dependent. When dates are confirmed residents, Bus Companies and Emergency Services will be informed. Full details are available on www.clacksweb.org.uk or may be examined at Clackmannanshire Council's Offices, Kilncraigs, Alloa, FK10 1EB, and any Council Office/Library, during normal office hours.

THE CLACKMANNANSHIRE COUNCIL
(VARIOUS STREETS, CLACKMANNANSHIRE)
(TEMPORARY CLOSURE) ORDER 2015

The Clackmannanshire Council has made the above named Order under Section 14 of the Road Traffic Regulation Act 1984 (as amended) on 24th June 2015.

The effect of this Order shall be to close to vehicles:-

The period from 0800 hours and 1700 hours between Monday 27th July 2015 and Monday 31st August 2015 for a period of 1 day on the section described in the Schedule attached. The temporary closure is required for resurfacing works and patching works, these are weather and squad dependent. When dates are confirmed residents, Bus Companies and Emergency Services will be informed.

A copy of the Order, together with a copy of the relative plan, is available on www.clacksweb.org.uk or may be examined at Clackmannanshire Council's Offices, Kilncraigs, Alloa, FK10 1EB, and any Council Office/Library, during normal office hours free of charge.

Garry Dallas
Executive Director

Clackmannanshire Council
Kilncraigs
ALLOA
FK10 1EB

SCHEDULE	
List of Road	Section of road over which temporary road closure is applicable for a period of 1 day from 0800 hours and 1700 hours between Monday 27th July 2015 and Monday 31st August 2015. Weather and squad dependent. When dates are confirmed residents, Bus Companies and Emergency Services will be informed.
B908 Collylands to Alva	From its junction with B9140 northwards until the start of the 30mph limit, a distance of 1490 metres or thereby.
Diversion Route	Via B9140, A908, A91, B908 and vice versa.
Lovers Loan, Dollar	From its junction with A91 southwards to its junction with Park Place, a distance of 105 metres or thereby.
Diversion Route	Via Park Place and vice versa.
Beauclerc Street/Back Road, Alva	From its junction with Queen Street westwards to a point outside Monadail, a distance of 520 metres or thereby.
Diversion Route	Via Back Road, Grodwell Drive, A91, Queen Street and vice versa.

THE CLACKMANNANSHIRE COUNCIL
(VARIOUS STREETS, CLACKMANNANSHIRE)
(TEMPORARY CLOSURE) ORDER 2015



This is the plan referred to in the Clackmannanshire Council (Various Streets, Clackmannanshire) (Temporary Closure) Order 2015.

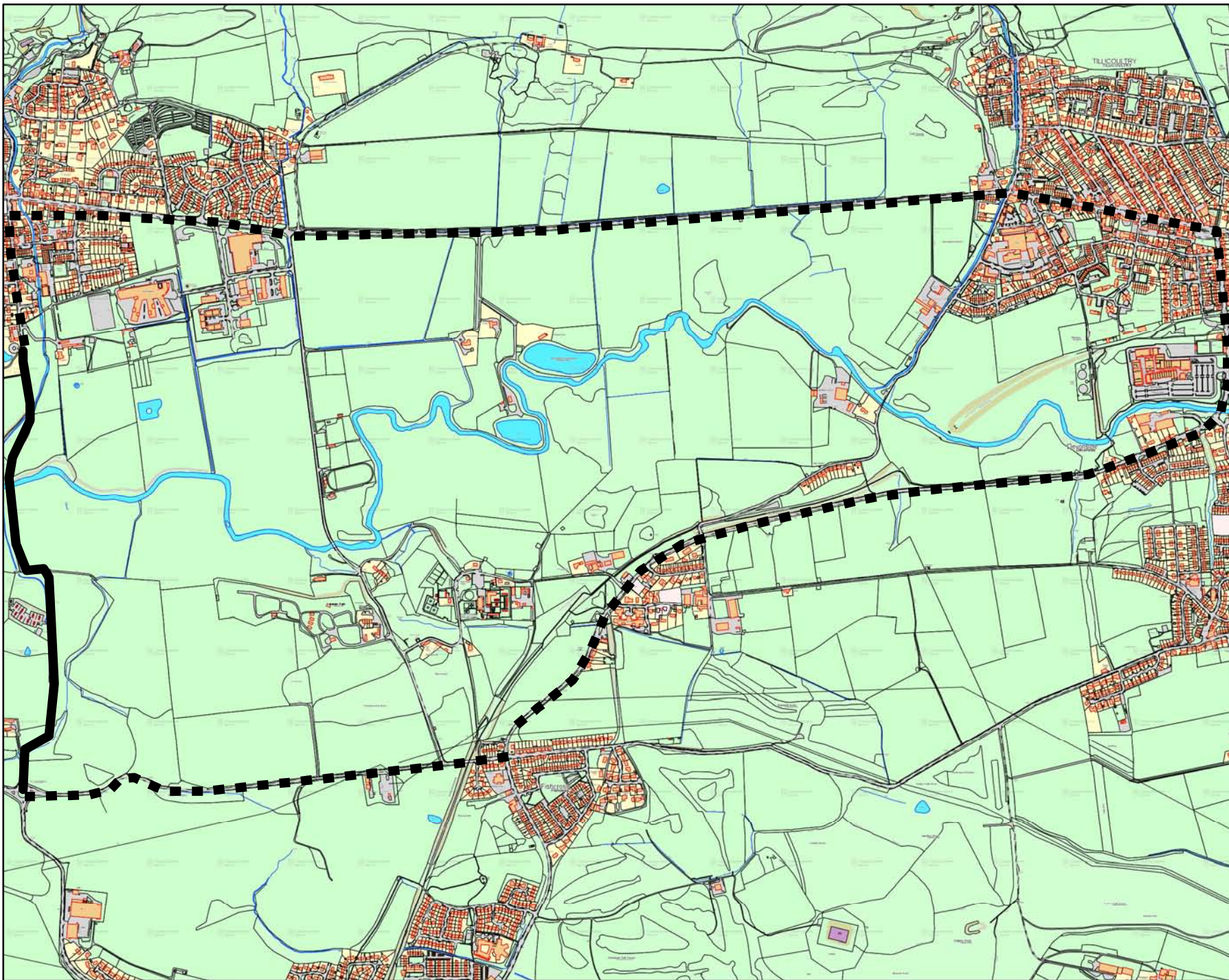
Made by Clackmannanshire Council on 24th June 2015.

Garry Dallas
Executive Director

Clackmannanshire Council
Kilncraigs
ALLOA
FK10 1EB

TRO2015_025
B908 Collylands to
Alva

-  Road Closure
-  Diversion



Scale : NTS
Paper Size : A4

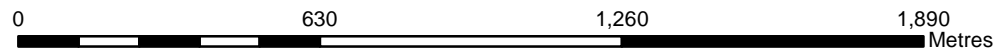
Date: June 2015



 **Clackmannanshire Council**
www.clacksweb.org.uk

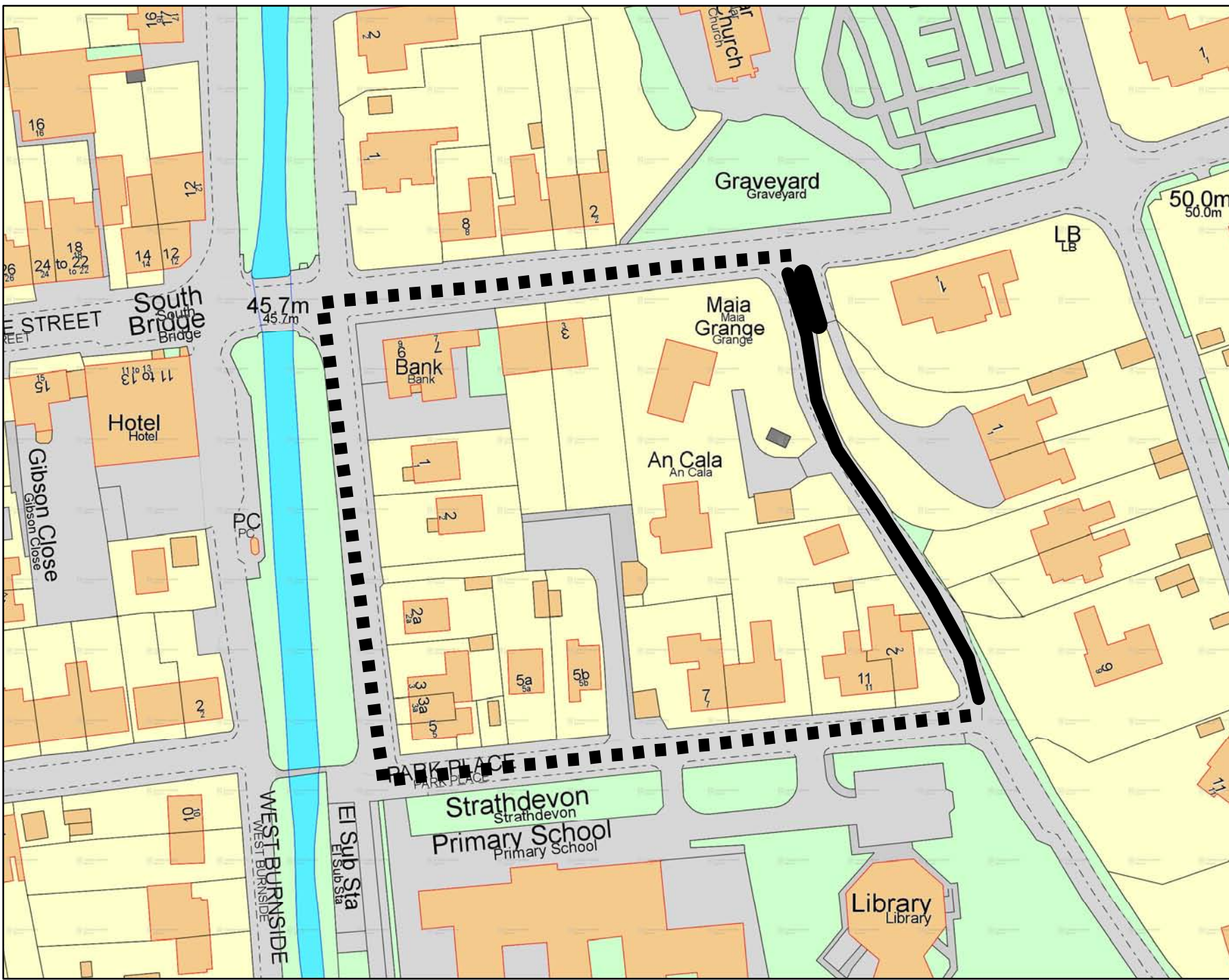
Services to Communities
Kilncraigs
Greenside Street
Alva
FK10 1EB

Tel: 01259 450 000 Fax: 01259 727 452
development_services@clacks.gov.uk

Reproduced by permission of Ordnance Survey on behalf of HMSO.
© Crown copyright and database right 2015. All rights reserved.
Ordnance Survey Licence number 100020783.



-  Road Closure
-  Diversion



Scale : NTS
Paper Size : A4



Date: June 2015

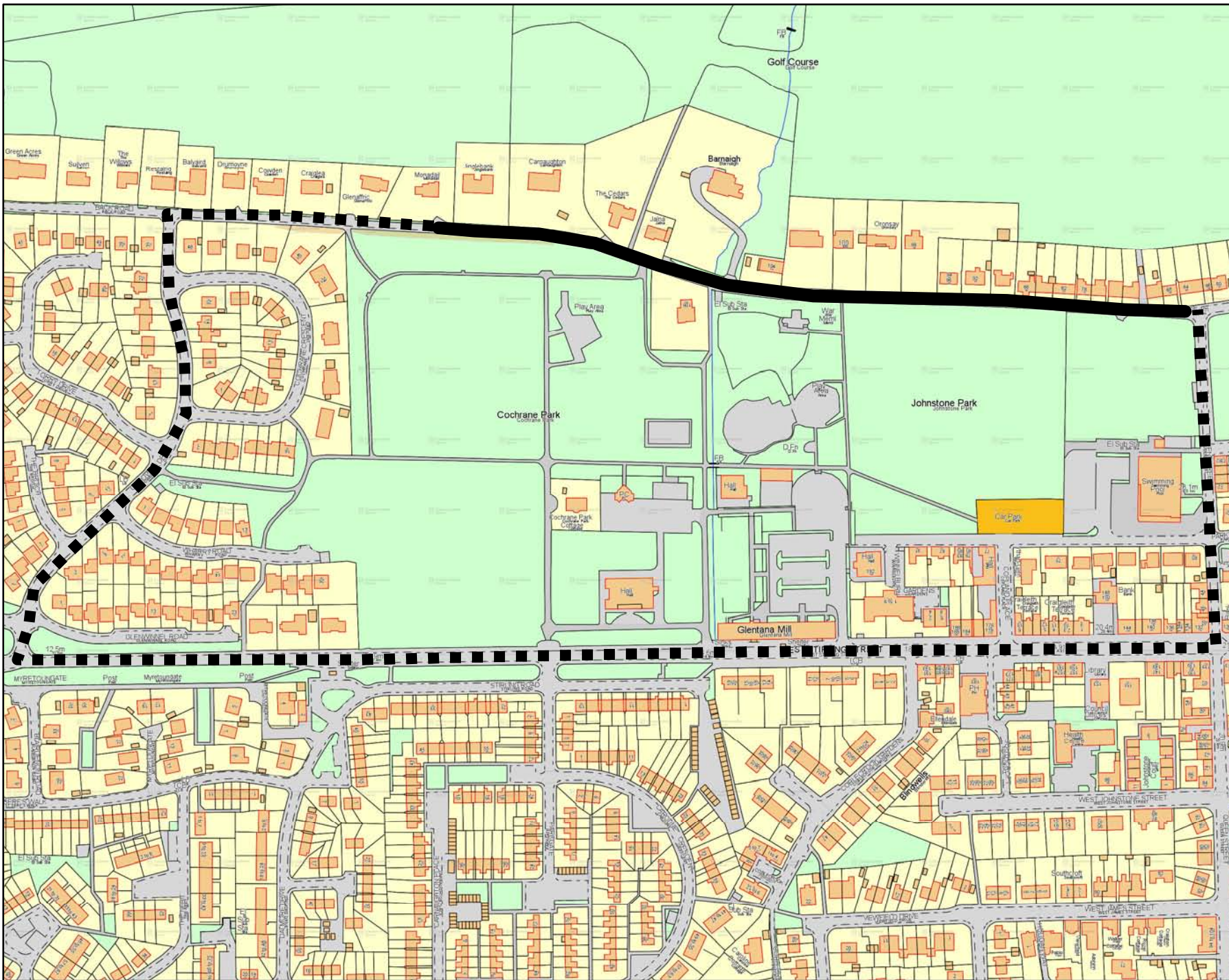
 **Clackmannanshire Council**
www.clacksweb.org.uk

Services to Communities
Kilncraigs
Greenside Street
Alloa
FK10 1EB

Tel: 01259 450 000 Fax: 01259 727 452
development_services@clacks.gov.uk



-  Road Closure
-  Diversion



Scale : NTS
Paper Size : A4

Date: June 2015

 **Clackmannanshire Council**
www.clacksweb.org.uk

Services to Communities
Kilncraigs
Greenside Street
Alva
FK10 1EB

Tel: 01259 450 000 Fax: 01259 727 452
development_services@clacks.gov.uk

