



**(A907 CLACKMANNAN ROAD, ALLOA)
(WAITING RESTRICTIONS) ORDER 2014**

The CLACKMANNANSHIRE COUNCIL in exercise of the powers conferred on them by Sections 1(1) and (2), 2(1) to (3), 4(2), 32(1) and Part IV of Schedule 9 to the Road Traffic Regulation Act 1984 and all other powers enabling them in that behalf, and after consultation with the Chief Constable in accordance with Part III of Schedule 9 to the said Act of 1984, hereby make the following Order:-

1. This Order may be cited as "The Clackmannanshire Council (A907 Clackmannan Road, Alloa) (Waiting Restrictions) Order 2014" and shall come into operation on the 5 December 2014.
2. The Interpretation Act 1978 shall apply for the interpretation of this Order as it applies for the interpretation of an Act of Parliament.
3. In this Order except where the context otherwise requires the following expressions have the meaning hereby respectively assigned to them:
 - (a) "disabled person" means the disabled driver of or a disabled passenger in a motor vehicle, being such a disabled person as is described in regulation 4 of the Disabled Persons (Badges for Motor Vehicles) (Scotland) Regulations 2000 in respect of whom any Council have issued a disabled person's badge and a valid badge is conspicuously displayed in the relevant position" on the vehicle;
 - (b) "disabled person's badge" has the same meaning as in the Disabled Persons (Badges for Motor Vehicles) (Scotland) Regulations 2000;
 - (c) "disabled person's vehicle" means a vehicle lawfully displaying a disabled person's badge issued, or having effect as if issued under any regulations for the time being in force under Section 21 of the Chronically Sick and Disabled Persons Act 1970(a).

- (d) "relevant position means":
 - (i) in the case of a vehicle fitted with a front windscreen the disabled person's badge is exhibited thereon with the obverse side facing forwards on the near side of and immediately behind the windscreen; and
 - (ii) in the case of a vehicle not fitted with a front windscreen the disabled person's badge is exhibited in a conspicuous position on the front or nearside of the vehicle.

- (e) "driver" in relation to a vehicle waiting in a parking place, means the person driving the vehicle at the time it was left in the parking place; "goods" include postal packets of any description; and "delivering" and "collecting" in relation to any goods include checking the goods for the purpose of their delivery or collection;

- (f) "owner", in relation to a vehicle, means the registered owner and/or the person by whom such vehicle is kept or used;

- (g) "road" has the same meaning as in Section 151 of the Roads (Scotland) Act 1984 and includes any verge or footway;

- (h) "traffic warden" means a traffic warden employed by a police authority in pursuance of Section 95 of the Act of 1984;

- (i) "vehicle" means a vehicle of any description and includes a machine or implement of any kind drawn or propelled along road whether by animal or mechanical power;

4. Save as provided in Articles 5, 6 and 7 of this Order no person shall, except upon the direction or with the permission of a Police Officer in uniform or Traffic Warden, cause or permit any vehicle to wait at any time on the length(s) of road(s) specified in the Schedule to this Order.

5. Nothing in Article 4 of this Order shall prevent any person from causing or permitting a vehicle to wait in any length of road specified in the Schedules to this order:

- (a) if the vehicle in the service of or employed by the Postmaster General is being used for the purposes of delivering or collecting postal packets as defined in Section 87 of the Post Office Act 1953;
- (b) for so long as may be necessary to enable the vehicle, if it cannot be used for such purpose in any other road, to be used in connection with any building operation or demolition, the removal of any obstruction to traffic, the maintenance improvement or reconstruction of any of the lengths of road so referred to, or the laying, erection, alteration or repair in or near to the said lengths of road of any sewer or main, pipe or apparatus for the supply of gas, water or electricity or any telecommunications apparatus as defined in subparagraph 1(1) of Schedule 2 to the Telecommunications Act;
- (c) where the vehicle is used for police, fire brigade or ambulance purposes or any vehicle in the service of the local authority in either case being used in pursuance of statutory power or duties;
- (d) where the vehicle is being used by a medical practitioner visiting patients on professional calls when such a vehicle bears, in a conspicuous position, the appropriate identification badge;
- (e) if the vehicle is waiting owing to the driver being prevented from proceeding by circumstances beyond his control or in order to avoid an accident;
- (f) where the person in control of the vehicle is required by law to stop.

6. Nothing in Articles 4, 5 and 7 of this order shall prevent any person from causing or permitting a disabled person's vehicle to wait without restriction on time of stay on the lengths of road referred to in those Articles where any disabled persons' vehicle is not causing an obstruction and displays in the relevant position a disabled badge issued by the local authority in exercise of the powers under Section 21(1) of the Chronically Sick and Disabled Persons Act 1970(a).
7. Nothing in Article 4 of this Order shall prevent any person from causing a pedal cycle not propelled by mechanical power to wait in any of the said lengths of roads.
8. For the purpose of this order a vehicle shall be deemed to wait or stop:
 - (a) if any point in that road is below the vehicle or its load and the vehicle is stationary;
 - (b) for more than a specified period in the same place if any point in that road is below the vehicle or its load throughout a period exceeding the specified period whether or not the vehicle is moved during that period.
9. The restrictions imposed by this Order shall be in addition to and not in derogation of any restrictions or requirements imposed by any regulations made or having effect as if made under the Act of 1984 or by any other enactment.
10. Insofar as any provision of this Order conflicts with a provision which is contained in an Order made or having effect as if made under the Act of 1984 and which imposes a restriction or prohibition on waiting by vehicles or grants an exemption from such restriction or prohibition then the effect of this Order shall prevail.

**DATED THIS SEVENTEENTH DAY OF NOVEMBER,
TWO THOUSAND AND FOURTEEN**

Garry Dallas
Executive Director

**THE CLACKMANNANSHIRE COUNCIL
(A907 CLACKMANNAN ROAD, ALLOA)
(WAITING RESTRICTIONS) ORDER 2014**

SCHEDULE	
List of Roads in Alloa	Side and section of road on which waiting is prohibited at any time
A907 Clackmannan Road	North Side:
	From a point where it meets Whins Road at Shillinghill roundabout (A907) in an easterly direction for a distance of 98 metres or thereby.
	From its junction with Park Place, westwards for a distance of 26 metres or thereby.
	From its junction with Park Place, eastwards for a distance of 18 metres or thereby.
	From its junction with Balfour Street, westwards for a distance of 38 metres or thereby.
	From its junction with Balfour Street, eastwards for a distance of 19 metres or thereby
	From its junction with Bruce Street, eastwards for a distance of 83 metres or thereby.
	From its junction with Hilton Road, westwards for a distance of 175 metres or thereby.
	From its junction with Hilton Road, eastwards for a distance of 290 metres or thereby.
	South Side:
	From a point where it meets Auld Brig Road at Shillinghill roundabout (A907) in an easterly direction for a distance of 270 metres or thereby.
	From its junction with Hillcrest Drive eastwards until its junction with Hawkhill Drive eastwards until the McDonalds entrance, a distance of 305 metres or thereby.
	From its junction with Hawkhill Drive eastwards until the McDonalds entrance, a distance of 215 metres or thereby.
	From the entrance to McDonalds, eastwards until a point where it meets the A907 at Clackmannan Road roundabout, a distance of 115 metres or thereby.
Car Park Access	West Side:
	From its junction with A907 Clackmannan Road, northwards for a distance of 15 metres or thereby.
	East Side:
	From its junction with A907 Clackmannan Road, northwards for a distance of 8 metres or thereby.
Hilton Road	West Side:
	From its junction with A907 Clackmannan Road, northwards for a distance of 20 metres or thereby.
	East Side:
	From its junction with A907 Clackmannan Road, northwards for a distance of 20 metres or thereby.
Hawkhill Road (East Access)	West Side:
	From its junction with A907 Clackmannan Road, southwards for a distance of 10 metres or thereby.
	East Side:
	From its junction with A907 Clackmannan Road, southwards for a distance of 10 metres or thereby.

Park Place	West Side:
	From its junction with A907 Clackmannan Road, northwards for a distance of 13 metres or thereby.
	East Side:
	From its junction with A907 Clackmannan Road, northwards for a distance of 13 metres or thereby.
Balfour Street	West Side:
	From its junction with A907 Clackmannan Road, northwards for a distance of 10 metres or thereby.
	East Side:
	From its junction with A907 Clackmannan Road, northwards for a distance of 10 metres or thereby.
Bruce Street	West Side:
	From its junction with A907 Clackmannan Road, northwards for a distance of 10 metres or thereby.
	East Side:
	From its junction with A907 Clackmannan Road, northwards for a distance of 10 metres or thereby.

**THE CLACKMANNANSHIRE COUNCIL
(A907 CLACKMANNAN ROAD, ALLOA)
(WAITING RESTRICTIONS) ORDER 2014**

Statement of reasons for making the Order

The order is required to improve visibility and to help keep traffic moving during football matches and other events.

Garry Dallas

Executive Director

Clackmannanshire Council
Kilncraigs
ALLOA
FK10 1EB

THE CLACKMANNANSHIRE COUNCIL (A907 CLACKMANNAN ROAD, ALLOA) (WAITING RESTRICTIONS) ORDER 2014

The Council proposes to make the above Order under Sections 1(1) and (2), 2(1) to (3), 4(2), 32(1) and Part IV of Schedule 9 to the Road Traffic Regulation Act 1984 to improve visibility and to help keep traffic moving during football matches and other events. Schedule - side and section of road on which waiting is prohibited at any time: **A907 Clackmannan Road** (North side: From a point where it meets Whins Road at Shillinghill roundabout (A907) in an easterly direction for a distance of 98 metres or thereby; from its junction with Park Place, westwards for a distance of 26 metres or thereby; from its junction with Park Place, eastwards for a distance of 18 metres or thereby; from its junction with Balfour Street westwards for a distance of 38 metres or thereby; from its junction with Balfour Street eastwards for a distance of 19 metres or thereby; from its junction with Bruce Street eastwards for a distance of 83 metres or thereby; from its junction with Hilton Road westwards for a distance of 175 metres or thereby; from its junction with Hilton Road eastwards for a distance of 290 metres or thereby; South side: from a point where it meets Auld Brig Road at Shillinghill roundabout (A907) in an easterly direction for a distance of 270 metres or thereby; from its junction with Hillcrest Drive eastwards until its junction with Hawkhill Drive eastwards until the McDonalds entrance, a distance of 305 metres or thereby; from its junction with Hawkhill Drive eastwards until the McDonalds entrance, a distance of 215 metres or thereby; from the entrance to McDonalds, eastwards until a point where it meets A907 at Clackmannan Road roundabout, a distance of 115 metres or thereby; **Car Park Access** (West Side: from its junction with A907 Clackmannan Road, northwards for a distance of 15 metres or thereby, East Side: from its junction with A907 Clackmannan Road, northwards for a distance of 8 metres or thereby) **Hilton Road** (West Side: from its junction with A907 Clackmannan Road, northwards for a distance of 20 metres or thereby; East Side: from its junction with A907 Clackmannan Road, northwards for a distance of 20 metres or thereby) **Hawkhill Road (East Access)** (West Side: from its junction with A907 Clackmannan Road, southwards for a distance of 10 metres or thereby; East Side: from its junction with A907 Clackmannan Road, southwards for a distance of 10 metres or thereby) **Park Place** (West Side: from its junction with A907 Clackmannan Road, northwards for a distance of 13 metres or thereby; East Side: from its junction with A907 Clackmannan Road, northwards for a distance of 13 metres or thereby) **Balfour Street** (West Side: from its junction with A907 Clackmannan Road, northwards for a distance of 10 metres or thereby; East Side: from its junction with A907 Clackmannan Road, northwards for a distance of 10 metres or thereby) **Bruce Street** (West Side: from its junction with A907 Clackmannan Road, northwards for a distance of 10 metres or thereby; East Side: From its junction with A907 Clackmannan Road, northwards for a distance of 10 metres or thereby. Objectors must state their reasons in writing to Gillian White, Strategy and Customer Services, Kilncraigs, Alloa, FK10 1EB by DATE. Full details are available on www.clacksweb.org.uk or may be examined at Clackmannanshire Council's Offices, Kilncraigs, Alloa, FK10 1EB, and any Council Office/Library, during normal office hours between DATE and DATE.

THE CLACKMANNANSHIRE COUNCIL (A907 CLACKMANNAN ROAD, ALLOA) (WAITING RESTRICTIONS) ORDER 2014

The Council has made the above Order under Sections 1(1) and (2), 2(1) to (3), 4(2), 32(1) and Part IV of Schedule 9 to the Road Traffic Regulation Act 1984 to improve visibility and to help keep traffic moving during football matches and other events. Schedule - side and section of road on which waiting is prohibited at any time: **A907 Clackmannan Road** (North side: From a point where it meets Whins Road at Shillinghill roundabout (A907) in an easterly direction for a distance of 98 metres or thereby; from its junction with Park Place, westwards for a distance of 26 metres or thereby; from its junction with Park Place, eastwards for a distance of 18 metres or thereby; from its junction with Balfour Street westwards for a distance of 38 metres or thereby; from its junction with Balfour Street eastwards for a distance of 19 metres or thereby; from its junction with Bruce Street eastwards for a distance of 83 metres or thereby; from its junction with Hilton Road westwards for a distance of 175 metres or thereby; from its junction with Hilton Road eastwards for a distance of 290 metres or thereby; South side: from a point where it meets Auld Brig Road at Shillinghill roundabout (A907) in an easterly direction for a distance of 270 metres or thereby; from its junction with Hillcrest Drive eastwards until its junction with Hawkhill Drive eastwards until the McDonalds entrance, a distance of 305 metres or thereby; from its junction with Hawkhill Drive eastwards until the McDonalds entrance, a distance of 215 metres or thereby; from the entrance to McDonalds, eastwards until a point where it meets A907 at Clackmannan Road roundabout, a distance of 115 metres or thereby; **Car Park Access** (West Side: from its junction with A907 Clackmannan Road, northwards for a distance of 15 metres or thereby, East Side: from its junction with A907 Clackmannan Road, northwards for a distance of 8 metres or thereby) **Hilton Road** (West Side: from its junction with A907 Clackmannan Road, northwards for a distance of 20 metres or thereby; East Side: from its junction with A907 Clackmannan Road, northwards for a distance of 20 metres or thereby) **Hawkhill Road (East Access)** (West Side: from its junction with A907 Clackmannan Road, southwards for a distance of 10 metres or thereby; East Side: from its junction with A907 Clackmannan Road, southwards for a distance of 10 metres or thereby) **Park Place** (West Side: from its junction with A907 Clackmannan Road, northwards for a distance of 13 metres or thereby; East Side: from its junction with A907 Clackmannan Road, northwards for a distance of 13 metres or thereby) **Balfour Street** (West Side: from its junction with A907 Clackmannan Road, northwards for a distance of 10 metres or thereby; East Side: from its junction with A907 Clackmannan Road, northwards for a distance of 10 metres or thereby) **Bruce Street** (West Side: from its junction with A907 Clackmannan Road, northwards for a distance of 10 metres or thereby; East Side: From its junction with A907 Clackmannan Road, northwards for a distance of 10 metres or thereby. Anyone wishing to question the validity of any of the provisions within this order should write to the Court of Session within six weeks of 05/12/14. Full details are available on www.clacksweb.org.uk or may be examined at Clackmannanshire Council's Offices, Kilncraigs, Alloa, FK10 1EB, and any Council Office/Library, during normal office hours.

**THE CLACKMANNANSHIRE COUNCIL
(A907 CLACKMANNAN ROAD, ALLOA)
(WAITING RESTRICTIONS) ORDER 2014**

The Clackmannanshire Council has made an Order under Sections 1(1) and (2), 2(1) to (3), 4(2), 32(1) and Part IV of Schedule 9 to the Road Traffic Regulation Act 1984 (as amended) and all other powers enabling them in that behalf on 17 November 2014.

FULL DETAILS of this Order are as published in the Alloa Advertiser on 17 September 2014, and will designate the section(s) of road(s) described in the Schedule where waiting restrictions will apply to improve visibility and to help keep traffic moving during football matches and other events.

A copy of the Order, together with a copy of the relative plan, is available at www.clacksweb.org.uk/transport/roadorders/ or may be examined at the Clackmannanshire Council's Offices, Kilncraigs, Alloa, FK10 1EB or at any council office, library or Community Access Point, during normal office hours free of charge.

Any person wishing to question the validity of the Order or of any provision contained therein on the grounds that it is not within the powers conferred by the aforesaid Act or that if any requirement therein has not been complied with, may, within six weeks from 5 December 2014 apply to the Court of Session for this purpose.

Garry Dallas

Executive Director

SCHEDULE	
List of Roads in Alloa	Side and section of road on which waiting is prohibited at any time
A907 Clackmannan Road	North Side:
	From a point where it meets Whins Road at Shillinghill roundabout (A907) in an easterly direction for a distance of 98 metres or thereby.
	From its junction with Park Place, westwards for a distance of 26 metres or thereby.
	From its junction with Park Place, eastwards for a distance of 18 metres or thereby.
	From its junction with Balfour Street, westwards for a distance of 38 metres or thereby.
	From its junction with Balfour Street, eastwards for a distance of 19 metres or thereby.
	From its junction with Bruce Street, eastwards for a distance of 83 metres or thereby.
	From its junction with Hilton Road, westwards for a distance of 175 metres or thereby.
	From its junction with Hilton Road, eastwards for a distance of 290 metres or thereby.
	South Side:
	From a point where it meets Auld Brig Road at Shillinghill roundabout (A907) in an easterly direction for a distance of 270 metres or thereby.
	From its junction with Hillcrest Drive eastwards until its junction with Hawkhill Drive eastwards until the McDonalds entrance, a distance of 305 metres or thereby.

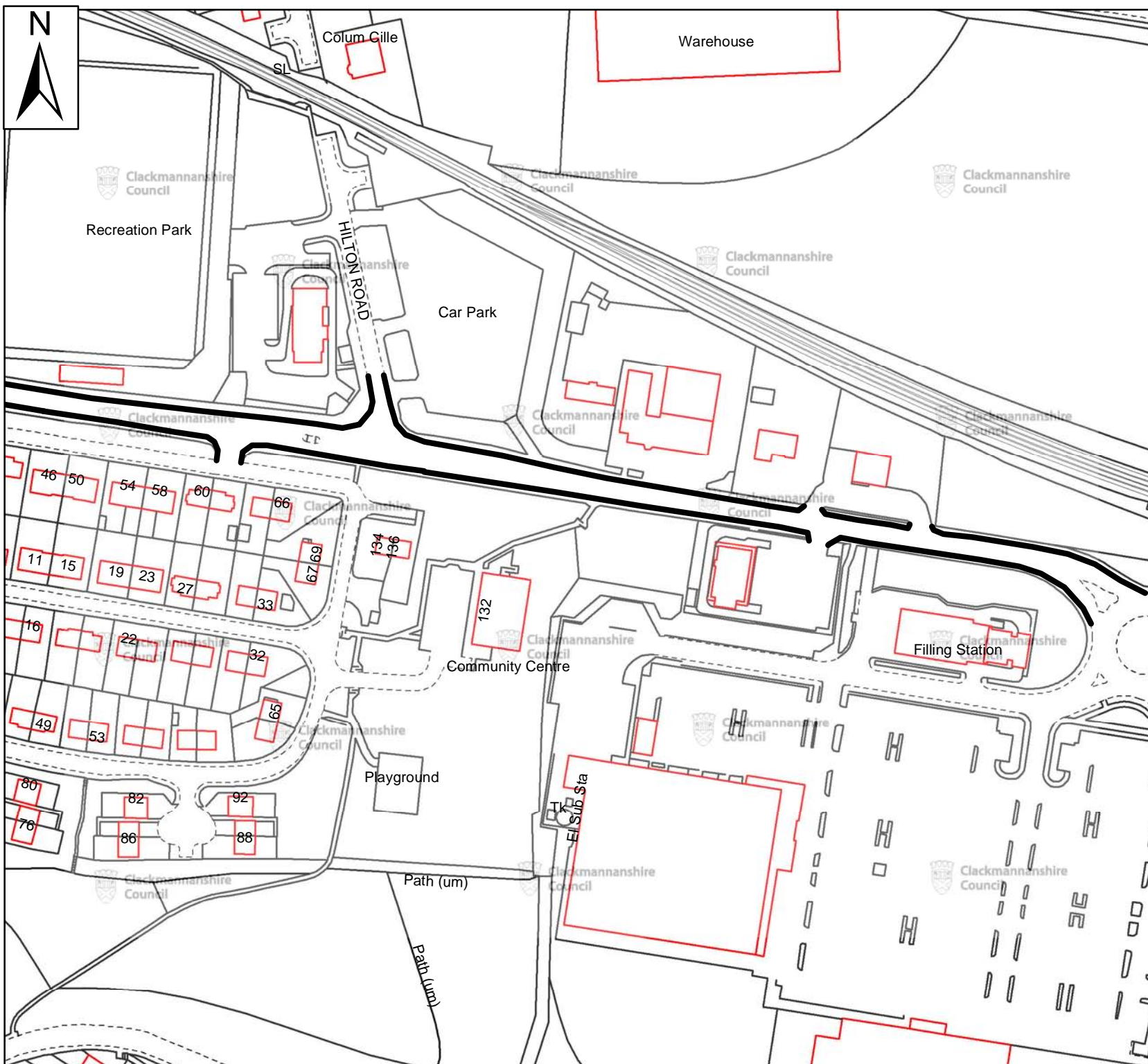
	From its junction with Hawkhill Drive eastwards until the McDonalds entrance, a distance of 215 metres or thereby.
	From the entrance to McDonalds, eastwards until a point where it meets the A907 at Clackmannan Road roundabout, a distance of 115 metres or thereby.
Car Park Access	West Side:
	From its junction with A907 Clackmannan Road, northwards for a distance of 15 metres or thereby.
	East Side:
	From its junction with A907 Clackmannan Road, northwards for a distance of 8 metres or thereby.
Hilton Road	West Side:
	From its junction with A907 Clackmannan Road, northwards for a distance of 20 metres or thereby.
	East Side:
	From its junction with A907 Clackmannan Road, northwards for a distance of 20 metres or thereby.
Hawkhill Road (East Access)	West Side:
	From its junction with A907 Clackmannan Road, southwards for a distance of 10 metres or thereby.
	East Side:
	From its junction with A907 Clackmannan Road, southwards for a distance of 10 metres or thereby.
Park Place	West Side:
	From its junction with A907 Clackmannan Road, northwards for a distance of 13 metres or thereby.
	East Side:
	From its junction with A907 Clackmannan Road, northwards for a distance of 13 metres or thereby.
Balfour Street	West Side:
	From its junction with A907 Clackmannan Road, northwards for a distance of 10 metres or thereby.
	East Side:
	From its junction with A907 Clackmannan Road, northwards for a distance of 10 metres or thereby.
Bruce Street	West Side:
	From its junction with A907 Clackmannan Road, northwards for a distance of 10 metres or thereby.
	East Side:
	From its junction with A907 Clackmannan Road, northwards for a distance of 10 metres or thereby.

**THE CLACKMANNANSHIRE COUNCIL
(A907 CLACKMANNAN ROAD, ALLOA)
(WAITING RESTRICTIONS) ORDER 2014**

This is the plan referred to in The Clackmannanshire Council (A907 Clackmannan Road, Alloa) (Waiting Restrictions) Order 2014 made by Clackmannanshire Council on 17 November 2014.

Garry Dallas
Executive Director

Clackmannanshire Council
Kilncraigs
ALLOA
FK10 1EB



— No Waiting at any time

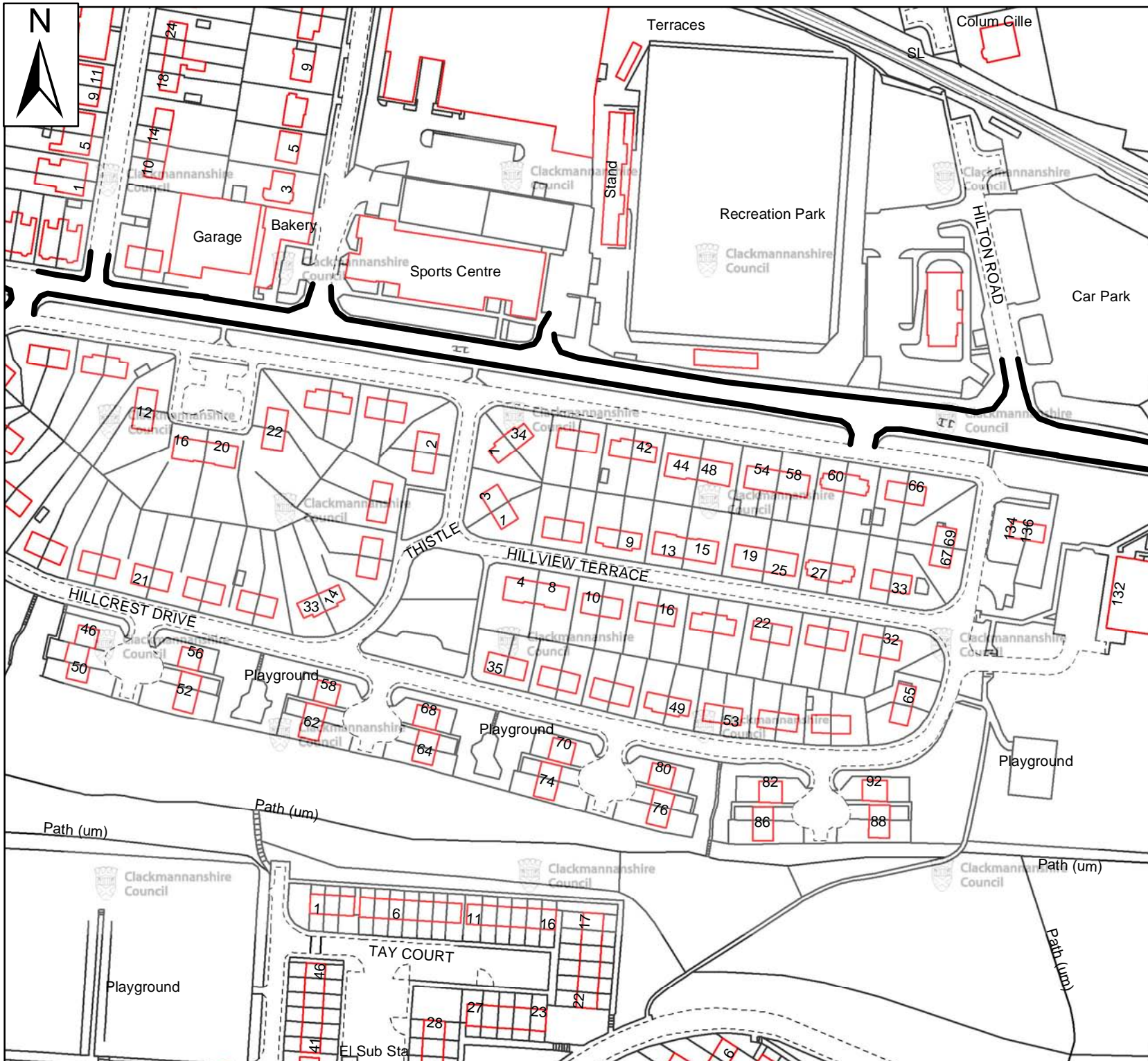
DRG14-068 - 1
A907 Clackmannan Road, Alloa

Scale : NTS
Paper Size : A4

Date : August 2014

 **Clackmannanshire Council**
www.clacksweb.org.uk
 Services to Communities
 Kilncraigs
 Greenside Street
 Alloa
 FK10 1EB
 Tel: 01259 450 000 Fax: 01259 727 452
 development_services@clacks.gov.uk

Reproduced by permission of Ordnance Survey on behalf of HMSO. © Crown copyright and database right 2014. All rights reserved.
 Ordnance Survey Licence number 100020783.



— No Waiting at any time

DRG14-068-2
A907 Clackmannan Road, Alloa

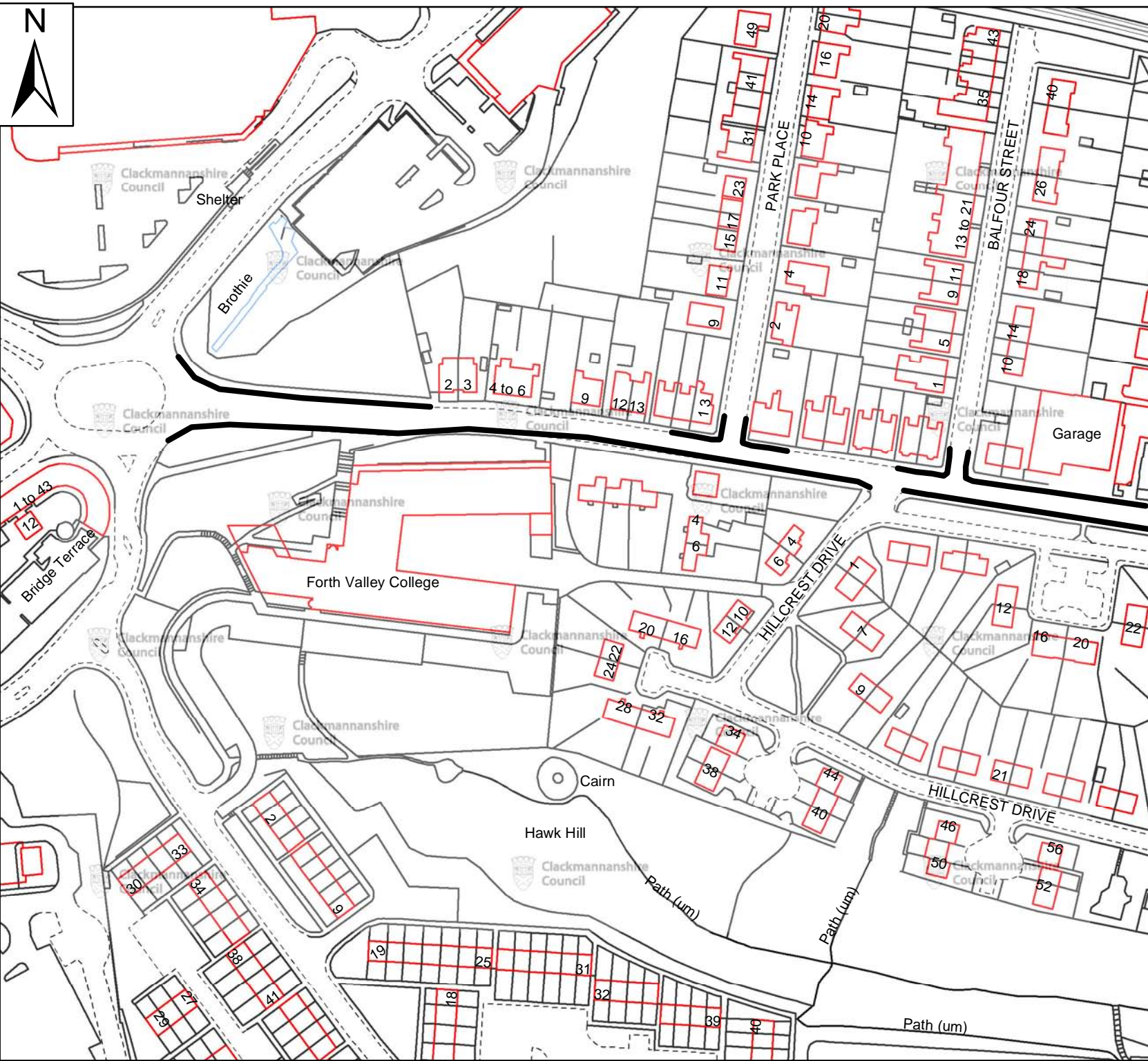
Scale : NTS
Paper Size : A4

Date : August 2014

 **Clackmannanshire Council**
www.clacksweb.org.uk
Services to Communities
Kilncraigs
Greenside Street
Alloa
FK10 1EB

Tel: 01259 450 000 Fax: 01259 727 452
development_services@clacks.gov.uk

Reproduced by permission of Ordnance Survey on behalf of HMSO. © Crown copyright and database right 2014. All rights reserved.
Ordnance Survey Licence number 100020783.



— No Waiting at any time

DRG14-068-3
A907 Clackmannan Road, Alloa

Scale : NTS
Paper Size : A4

Date : August 2014

 **Clackmannanshire Council**
www.clacksweb.org.uk
Services to Communities
Kilnraigs
Greenside Street
Alloa
FK10 1EB

Tel: 01259 450 000 Fax: 01259 727 452
development_services@clacks.gov.uk

Reproduced by permission of Ordnance Survey on behalf of HMSO. © Crown copyright and database right 2014. All rights reserved.
Ordnance Survey Licence number 100020783.