



**Clackmannanshire
Council**

www.clacksweb.org.uk

**(VARIOUS STREETS, CLACKMANNANSHIRE)
(TEMPORARY WAITING RESTRICTIONS) ORDER 2014**

The Clackmannanshire Council, in exercise of the powers conferred on them by Section 14 of the Road Traffic Regulation Act 1984 as amended by the Road Traffic (Temporary Restriction) Act 1991 and of all other powers enabling them in that behalf, hereby make the following Order.

1. This Order may be cited as "The Clackmannanshire Council (Various Streets, Clackmannanshire) (Temporary Waiting Restrictions) Order 2014" and notwithstanding the date hereof shall come into operation on the 25th June 2014.

2. The effect of this Order shall be that there will be no waiting at any time during:-
The period from 0830 hours until 0945 hours on Wednesday 25th June 2014 on the section described in Schedule 1 attached; the period from 1000 hours until 1115 hours on Wednesday 25th June 2014 on the section described in Schedule 2 attached; the period from 0930 hours until 1300 hours on Wednesday 25th June 2014 on the section described in Schedule 3 attached; the period from 1200 hours until 1245 hours on Wednesday 25th June 2014 on the section described in Schedule 4 attached; the period from 1230 hours until 1330 hours on Wednesday 25th June 2014 on the section described in Schedule 5 attached; the period from 1300 hours until 1530 hours on Wednesday 25th June 2014 on the section described in Schedule 6 attached; the period from 1430 hours until 1600 hours on Wednesday 25th June 2014 on the section described in Schedule 7 attached; the period from 1500 hours until 1730 hours on Wednesday 25th June 2014 on the section described in Schedule 8 attached; the period from 1230 hours until 1815 hours on Wednesday 25th June 2014 on the section described in Schedule 9 attached; the period from 1715 hours until 1830 hours on Wednesday 25th June 2014 on the section described in Schedule 10 attached; and the period from 1700 hours until 2000 hours on Wednesday 25th June 2014 on the section described in Schedule 11 attached. The temporary "no waiting restrictions" are necessary to facilitate the Queen's Baton Relay throughout Clackmannanshire.

DATED THIS SIXTH DAY OF JUNE, TWO THOUSAND AND FOURTEEN

Garry Dallas
Director of Services to Communities

Clackmannanshire Council, Greenfield, ALLOA, FK10 2AD

SCHEDULE 1	
List of Roads	Sections of road over which temporary no waiting at any time restriction is applicable from 0830 hours until 0945 hours on Wednesday 25th June 2014.
South Pilmuir Road, Clackmannan	South Side From its junction with C93 westwards until its junction with Castle Street, a distance of 212 metres or thereby.
Castle Street, Clackmannan	Both Sides From its junction with South Pilmuir Road northwards to its junction with Cattlemarket/Main Street, a distance of 347 metres or thereby.
Main Street, Clackmannan	Both Sides From its junction with Cattlemarket westwards to its junction with Kirk Wynd, a distance of 200 metres or thereby.
Kirk Wynd, Clackmannan	Both Sides From its junction with Main Street northwards to its junction with Alloa Road, a distance of 280 metres or thereby.
High Street, Clackmannan	South Side From its junction with Main Street westwards to the access to the Clackmannan Tower, a distance of 188 metres or thereby.
SCHEDULE 2	
List of Roads	Sections of road over which temporary no waiting at any time restriction is applicable from 1000 hours until 1115 hours on Wednesday 25th June 2014.
Kilncraigs Road/Scott Crescent, Alloa	South Side From its junction with Devon Road southwards until its junction with East Castle Street, a distance of 583 metres or thereby.
Kilncraigs Car Park	First two rows of parking within the car park.
SCHEDULE 3	
List of Roads	Sections of road over which temporary no waiting at any time restriction is applicable from 0930 hours until 1300 hours on Wednesday 25th June 2014.
Mar Place, Sauchie	Both Sides From its junction with Parkhead Road northwards until its junction with (unclassified) Main Street, a distance of 170 metres or thereby.
Main Street (uncla), Sauchie	Both sides From its junction with Mar Place northwards until its junction with (unclassified) Main Street, a distance of 130 metres or thereby.
SCHEDULE 4	
List of Roads	Sections of road over which temporary no waiting at any time restriction is applicable from 1200 hours until 1245 hours on Wednesday 25th June 2014.
Wardlaw Street/Ramsay Street, Coalsnaughton	North Side From the 30mph speed restriction at westend eastwards until the 30mph sign at the eastend of Coalsnaughton, a distance of 855 metres or thereby.
SCHEDULE 5	
List of Roads	Sections of road over which temporary no waiting at any time restriction is applicable from 1230 hours until 1330 hours on Wednesday 25th June 2014.

Dollar Glen Car Park	For its entirety.
SCHEDULE 6	
List of Roads	Sections of road over which temporary no waiting at any time restriction is applicable from 1300 hours until 1530 hours on Wednesday 25th June 2014.
Station Road, Dollar	Both Sides From its junction with A91 Bridge Street southwards to its junction with Dewar Street, a distance of 92 metres or thereby.
Dewar Street, Dollar	Both Sides From its junction with Station Road eastwards to its junction with West Burnside (south), a distance of 105 metres or thereby.
West Burnside (south)	Both Sides From its junction with A91 Bridge Street southwards to its junction with Dewar Street, a distance of 88 metres or thereby.
McNabb Street, Dollar (north)	West Side From its junction with A91 Bridge Street northwards to its junction with Manorhouse Road, a distance of 100 metres or thereby.
Mylne Avenue, Dollar	Both Sides From its junction with A91 Harviestoun Road for its entirety, a distance of 373 metres or thereby.
SCHEDULE 7	
List of Roads	Sections of road over which temporary no waiting at any time restriction is applicable from 1430 hours until 1600 hours on Wednesday 25th June 2014.
Hill Street, Tillicoultry	West Side From its junction with A91 High Street northwards to its junction with Stalker Avenue, a distance of 267 metres or thereby.
North Hill Street, Tillicoultry	West Side From its junction with Stalker Avenue northwards to its junction with Ramsay Terrace, a distance of 121 metres or thereby.
Roundelwood, Tillicoultry	Both Sides From its junction with Stalker Avenue northwards to its junction with Ramsay Terrace, a distance of 138 metres or thereby.
Ramsay Terrace, Tillicoultry	Both Sides From its junction with North Hill Street eastwards to its junction with Roundelwood, a distance of 90 metres or thereby.
SCHEDULE 8	
List of Roads	Sections of road over which temporary no waiting at any time restriction is applicable from 1500 hours until 1730 hours on Wednesday 25th June 2014.
Cochrane Park, Alva	Car park in its entirety.
SCHEDULE 9	
List of Roads	Sections of road over which temporary no waiting at any time restriction is applicable from 1230 hours until 1815 hours on Wednesday 25th June 2014.

Brook Street, Menstrie	East Side From its junction with A91 Main Street West southwards to its junction with Castle Road, a distance of 100 metres or thereby.
Castle Road, Menstrie	Both Sides From its junction with Brook Street eastwards to its junction with Menstrie Place, a distance of 47 metres or thereby.
Menstrie Place, Menstrie	Both Sides From its junction with Castle Road south and eastwards to its junction with Elmbank, a distance of 110 metres or thereby.
Elmbank, Menstrie	Both Sides From its junction with Menstrie Place eastwards to its junction with Forthvale, a distance of 236 metres or thereby.

SCHEDULE 10

List of Roads	Sections of road over which temporary no waiting at any time restriction is applicable from 1715 hours until 1830 hours on Wednesday 25th June 2014.
Baingle Brae, Tullibody	Both Sides From its junction with B9096 Stirling Road southwards to its junction with Newmills, a distance of 135 metres or thereby.
Newmills, Tullibody	South, East and North Sides From its junction with Baingle Bare eastwards to its junction with Ochil Street, a distance of 253 metres or thereby.
Ochil Street, Tullibody	Both Sides From its junction with Ochil Street northwards to its junction with Main Street, a distance of 230 metres or thereby.

SCHEDULE 11

List of Roads	Sections of road over which temporary no waiting at any time restriction is applicable from 1700 hours until 2000 hours on Wednesday 25th June 2014.
B9096 Tullibody- Alloa	Both Sides From its junction with Blackmuir Place eastwards to its junction with Ormiston Drive, a distance of 855 metres or thereby.

THE CLACKMANNANSHIRE COUNCIL
(VARIOUS STREETS, CLACKMANNANSHIRE)
(TEMPORARY WAITING RESTRICTIONS) ORDER 2014

STATEMENT OF REASONS FOR MAKING THE ORDER

The order is necessary to facilitate the Queen's Baton Relay throughout Clackmannanshire.

Garry Dallas
Director of Services to Communities

Clackmannanshire Council
Greenfield
ALLOA
FK10 2AD

The Clackmannanshire Council (Various Streets, Clackmannanshire) (Temporary Waiting Restrictions) Order 2014

The Council has made "The Clackmannanshire Council (Various Streets, Clackmannanshire) (Temporary Waiting Restriction) Order 2014", under the Road Traffic Regulation Act 1984 (as amended) on 6th June 2014: to close to vehicles at **(SCHEDULE 1): South Pilmuir Road, Clackmannan (South Side)** from its junction with C93 westwards until its junction with Castle Street, a distance of 212 metres or thereby; **Castle Street, Clackmannan (Both Sides)** from its junction with South Pilmuir Road northwards to its junction with Cattlemarket/Main Street, a distance of 347 metres or thereby; **Main Street, Clackmannan (Both Sides)** from its junction with Cattlemarket westwards to its junction with Kirk Wynd, a distance of 200 metres or thereby; **Kirk Wynd, Clackmannan (Both Sides)** from its junction with Main Street northwards to its junction with Alloa Road, a distance of 280 metres or thereby; **High Street, Clackmannan (South Side)** from its junction with Main Street westwards to the access to the Clackmannan Tower, a distance of 188 metres or thereby. Schedule 1 runs from 0830 hours until 0945 hours on Wednesday 25th June 2014. **(SCHEDULE 2): Kilncraigs Road/Scott Crescent, Alloa (South Side)** from its junction with Devon Road southwards until its junction with East Castle Street, a distance of 583 metres or thereby; **Kilncraigs Car Park** - first two rows of parking within the car park. Schedule 2 runs from the period from 1000 hours until 1115 hours on Wednesday 25th June 2014. **(SCHEDULE 3): Mar Place, Sauchie (Both Sides)** from its junction with Parkhead Road northwards until its junction with (unclassified) Main Street, a distance of 170 metres or thereby; **Main Street (unclassified), Sauchie (Both Sides)** from its junction with Mar Place northwards until its junction with (unclassified) Main Street, a distance of 130 metres or thereby. Schedule 3 runs from the period from 0930 hours until 1300 hours on Wednesday 25th June 2014. **(SCHEDULE 4): Wardlaw Street/Ramsay Street, Coalsnaughton (North Side)** from the 30mph speed restriction at westend eastwards until the 30mph sign at the eastend of Coalsnaughton, a distance of 855 metres or thereby. Schedule 4 runs from the period from 1200 hours until 1245 hours on Wednesday 25th June 2014. **(SCHEDULE 5): Dollar Glen Car Park** - for its entirety. Schedule 5 runs for the period from 1230 hours until 1330 hours on Wednesday 25th June 2014. **(SCHEDULE 6): Station Road, Dollar (Both Sides)** from its junction with A91 Bridge Street southwards to its junction with Dewar Street, a distance of 92 metres or thereby; **Dewar Street, Dollar (Both Sides)** from its junction with Station Road eastwards to its junction with West Burnside (south), a distance of 105 metres or thereby; **West Burnside (south) (Both Sides)** from its junction with A91 Bridge Street southwards to its junction with Dewar Street, a distance of 88 metres or thereby; **McNabb Street, Dollar (north) (West Side)** from its junction with A91 Bridge Street northwards to its junction with Manorhouse Road, a distance of 100 metres or thereby; **Myln Avenue, Dollar (Both Sides)** from its junction with A91 Harviestoun Road for its entirety, a distance of 373 metres or thereby. Schedule 6 runs from the period from 1300 hours until 1530 hours on Wednesday 25th June 2014. **(SCHEDULE 7): Hill Street, Tillicoultry (West Sides)** from its junction with A91 High Street northwards to its junction with Stalker Avenue, a distance of 267 metres or thereby; **North Hill Street, Tillicoultry (West Side)** from its junction with Stalker Avenue northwards to its junction with Ramsay Terrace, a distance of 121 metres or thereby; **Roundelwood, Tillicoultry (Both Sides)** from its junction with Stalker Avenue northwards to its junction with Ramsay Terrace, a distance of 138 metres or thereby; **Ramsay Terrace, Tillicoultry (Both Sides)** from its junction with North Hill Street eastwards to its junction with Roundelwood, a distance of 90 metres

or thereby. Schedule 7 runs from the period from 1430 hours until 1600 hours on Wednesday 25th June 2014. **(SCHEDULE 8): Cochrane Park, Alva** - car park in its entirety. Schedule 8 runs from the period from 1500 hours until 1730 hours on Wednesday 25th June 2014. **(SCHEDULE 9); Brook Street, Menstrie (East Side)** from its junction with A91 Main Street West southwards to its junction with Castle Street, a distance of 100 metres or thereby; **Castle Road, Menstrie (Both Sides)** from its junction with Brook Street eastwards to its junction with Menstrie Place, a distance of 47 metres or thereby; **Menstrie Place, Menstrie (Both Sides)** from its junction with Castle Road south and eastwards to its junction with Elmbank, a distance of 110 metres or thereby; **Elmbank, Menstrie (Both Sides)** from its junction with Menstrie Place eastwards to its junction with Forthvale, a distance of 236 metres or thereby. Schedule 9 runs from the period from 1230 hours until 1815 hours on Wednesday 25th June 2014. **(SCHEDULE 10): Baingle Brae, Tullibody (Both Sides)** from its junction with B9096 Stirling Road southwards to its junction with Newmills, a distance of 135 metres or thereby; **Newmills, Tullibody (South, East and North Sides)** from its junction with Baingle Brae eastwards to its junction with Baingle Brae eastwards to its junction with Ochil Street, a distance of 253 metres or thereby; **Ochil Street, Tullibody (Both Sides)** from its junction with Main Street, a distance of 230 metres or thereby. Schedule 10 runs from the period from 1715 hours until 1830 hours on Wednesday 25th June 2014. **(SCHEDULE 11): B9096 Tullibody-Alloa (Both Sides)** from its junction with Blackmuir Place eastwards to its junction with Ormiston Drive, a distance of 855 metres or thereby. Schedule 11 runs from the period from 1700 hours until 2000 hours on Wednesday 25th June 2014. The temporary "no waiting restrictions" are necessary to facilitate the Queen's Baton Relay throughout Clackmannanshire. Full details are available on www.clacksweb.org.uk or may be examined at Clackmannanshire Council's Offices, Greenfield, Alloa, FK10 2AD, and any Council Office/Library, during normal office hours.

THE CLACKMANNANSHIRE COUNCIL
(VARIOUS STREETS, CLACKMANNANSHIRE)
(TEMPORARY WAITING RESTRICTIONS) ORDER 2014

The Clackmannanshire Council has made the above named Order under Section 14 of the Road Traffic Regulation Act 1984 (as amended) on 6th June 2014.

The effect of this Order shall be to close to vehicles:-

The period from 0830 hours until 0945 hours on Wednesday 25th June 2014 on the section described in Schedule 1 attached; the period from 1000 hours until 1115 hours on Wednesday 25th June 2014 on the section described in Schedule 2 attached; the period from 0930 hours until 1300 hours on Wednesday 25th June 2014 on the section described in Schedule 3 attached; the period from 1200 hours until 1245 hours on Wednesday 25th June 2014 on the section described in Schedule 4 attached; the period from 1230 hours until 1330 hours on Wednesday 25th June 2014 on the section described in Schedule 5 attached; the period from 1300 hours until 1530 hours on Wednesday 25th June 2014 on the section described in Schedule 6 attached; the period from 1430 hours until 1600 hours on Wednesday 25th June 2014 on the section described in Schedule 7 attached; the period from 1500 hours until 1730 hours on Wednesday 25th June 2014 on the section described in Schedule 8 attached; the period from 1230 hours until 1815 hours on Wednesday 25th June 2014 on the section described in Schedule 9 attached; the period from 1715 hours until 1830 hours on Wednesday 25th June 2014 on the section described in Schedule 10 attached; the period from 1700 hours until 2000 hours on Wednesday 25th June 2014 on the section described in Schedule 11 attached. The temporary "no waiting restrictions" are necessary to facilitate the Queen's Baton Relay throughout Clackmannanshire.

A copy of the Order, together with a copy of the relative plan, is available on www.clacksweb.org.uk or may be examined at Clackmannanshire Council's Offices, Greenfield, Alloa, FK10 2AD, and any Council Office/Library, during normal office hours free of charge.

Garry Dallas
Director of Services to Communities

Clackmannanshire Council
Greenfield
ALLOA
FK10 2AD

SCHEDULE 1	
List of Roads	Sections of road over which temporary no waiting at any time restriction is applicable from 0830 hours until 0945 hours on Wednesday 25th June 2014.
South Pilmuir Road, Clackmannan	South Side From its junction with C93 westwards until its junction with Castle Street, a distance of 212 metres or thereby.
Castle Street, Clackmannan	Both Sides From its junction with South Pilmuir Road northwards to its junction with

	Cattlemarket/Main Street, a distance of 347 metres or thereby.
Main Street, Clackmannan	Both Sides From its junction with Cattlemarket westwards to its junction with Kirk Wynd, a distance of 200 metres or thereby.
Kirk Wynd, Clackmannan	Both Sides From its junction with Main Street northwards to its junction with Alloa Road, a distance of 280 metres or thereby.
High Street, Clackmannan	South Side From its junction with Main Street westwards to the access to the Clackmannan Tower, a distance of 188 metres or thereby.

SCHEDULE 2

List of Roads	Sections of road over which temporary no waiting at any time restriction is applicable from 1000 hours until 1115 hours on Wednesday 25th June 2014.
Kilncraigs Road/Scott Crescent, Alloa	South Side From its junction with Devon Road southwards until its junction with East Castle Street, a distance of 583 metres or thereby.
Kilncraigs Car Park	First two rows of parking within the car park.

SCHEDULE 3

List of Roads	Sections of road over which temporary no waiting at any time restriction is applicable from 0930 hours until 1300 hours on Wednesday 25th June 2014.
Mar Place, Sauchie	Both Sides From its junction with Parkhead Road northwards until its junction with (unclassified) Main Street, a distance of 170 metres or thereby.
Main Street (uncla), Sauchie	Both Sides From its junction with Mar Place northwards until its junction with (unclassified) Main Street, a distance of 130 metres or thereby.

SCHEDULE 4

List of Roads	Sections of road over which temporary no waiting at any time restriction is applicable from 1200 hours until 1245 hours on Wednesday 25th June 2014.
Wardlaw Street/Ramsay Street, Coalsnaughton	North Side From the 30mph speed restriction at westend eastwards until the 30mph sign at the eastend of Coalsnaughton, a distance of 855 metres or thereby.

SCHEDULE 5

List of Roads	Sections of road over which temporary no waiting at any time restriction is applicable from 1230 hours until 1330 hours on Wednesday 25th June 2014.
Dollar Glen Car Park	For its entirety.

SCHEDULE 6

List of Roads	Sections of road over which temporary no waiting at any time restriction is applicable from 1300 hours until 1530 hours on Wednesday 25th June 2014.
Station Road, Dollar	Both Sides From its junction with A91 Bridge Street southwards to its junction with Dewar Street, a distance of 92 metres or thereby.

Dewar Street, Dollar	Both Sides From its junction with Station Road eastwards to its junction with West Burnside (south), a distance of 105 metres or thereby.
West Burnside (south)	Both Sides From its junction with A91 Bridge Street southwards to its junction with Dewar Street, a distance of 88 metres or thereby.
McNabb Street, Dollar (north)	West Side From its junction with A91 Bridge Street northwards to its junction with Manorhouse Road, a distance of 100 metres or thereby.
Mylne Avenue, Dollar	Both Sides From its junction with A91 Harviestoun Road for its entirety, a distance of 373 metres or thereby.

SCHEDULE 7

List of Roads	Sections of road over which temporary no waiting at any time restriction is applicable from 1430 hours until 1600 hours on Wednesday 25th June 2014.
Hill Street, Tillicoultry	West Side From its junction with A91 High Street northwards to its junction with Stalker Avenue, a distance of 267 metres or thereby.
North Hill Street, Tillicoultry	West Side From its junction with Stalker Avenue northwards to its junction with Ramsay Terrace, a distance of 121 metres or thereby.
Roundelwood, Tillicoultry	Both Sides From its junction with Stalker Avenue northwards to its junction with Ramsay Terrace, a distance of 138 metres or thereby.
Ramsay Terrace, Tillicoultry	Both Sides From its junction with North Hill Street eastwards to its junction with Roundelwood, a distance of 90 metres or thereby.

SCHEDULE 8

List of Roads	Sections of road over which temporary no waiting at any time restriction is applicable from 1500 hours until 1730 hours on Wednesday 25th June 2014.
Cochrane Park, Alva	Car park in its entirety.

SCHEDULE 9

List of Roads	Sections of road over which temporary no waiting at any time restriction is applicable from 1230 hours until 1815 hours on Wednesday 25th June 2014.
Brook Street, Menstrie	East Side From its junction with A91 Main Street West southwards to its junction with Castle Road, a distance of 100 metres or thereby.
Castle Road, Menstrie	Both Sides From its junction with Brook Street eastwards to its junction with Menstrie Place, a distance of 47 metres or thereby.
Menstrie Place, Menstrie	Both Sides From its junction with Castle Road south and eastwards to its junction with Elmbank, a distance of 110 metres or thereby.

Elmbank, Menstrie	Both Sides From its junction with Menstrie Place eastwards to its junction with Forthvale, a distance of 236 metres or thereby.
SCHEDULE 10	
List of Roads	Sections of road over which temporary no waiting at any time restriction is applicable from 1715 hours until 1830 hours on Wednesday 25th June 2014.
Baingle Brae, Tullibody	Both Sides From its junction with B9096 Stirling Road southwards to its junction with Newmills, a distance of 135 metres or thereby.
Newmills, Tullibody	South, East and North Sides From its junction with Baingle Bare eastwards to its junction with Ochil Street, a distance of 253 metres or thereby.
Ochil Street, Tullibody	Both Sides From its junction with Ochil Street northwards to its junction with Main Street, a distance of 230 metres or thereby.
SCHEDULE 11	
List of Roads	Sections of road over which temporary no waiting at any time restriction is applicable from 1700 hours until 2000 hours on Wednesday 25th June 2014.
B9096 Tullibody-Alloa	Both Sides From its junction with Blackmuir Place eastwards to its junction with Ormiston Drive, a distance of 855 metres or thereby.

THE CLACKMANNANSHIRE COUNCIL
(VARIOUS STREETS, CLACKMANNANSHIRE)
(TEMPORARY WAITING RESTRICTIONS) ORDER 2014

This is the plan referred to in the Clackmannanshire Council (Various Streets, Clackmannanshire) (Temporary Waiting Restrictions) Order 2014.

Made by Clackmannanshire Council on 6th June 2014.

Garry Dallas
Director of Services to Communities

Clackmannanshire Council
Greenfield
ALLOA
FK10 2AD



CLACKMANNAN
Schedule 1
Section of road over which temporary
no waiting at any time restriction is
applicable from 0830 hours until
0945 hours on Wednesday
25th June 2014

— No Waiting at any Time

kirk Wynd - Both Sides

Main Street - Both Sides

High Street - South Side

Castle Street - Both Sides

South Pilmuir Road - South Side



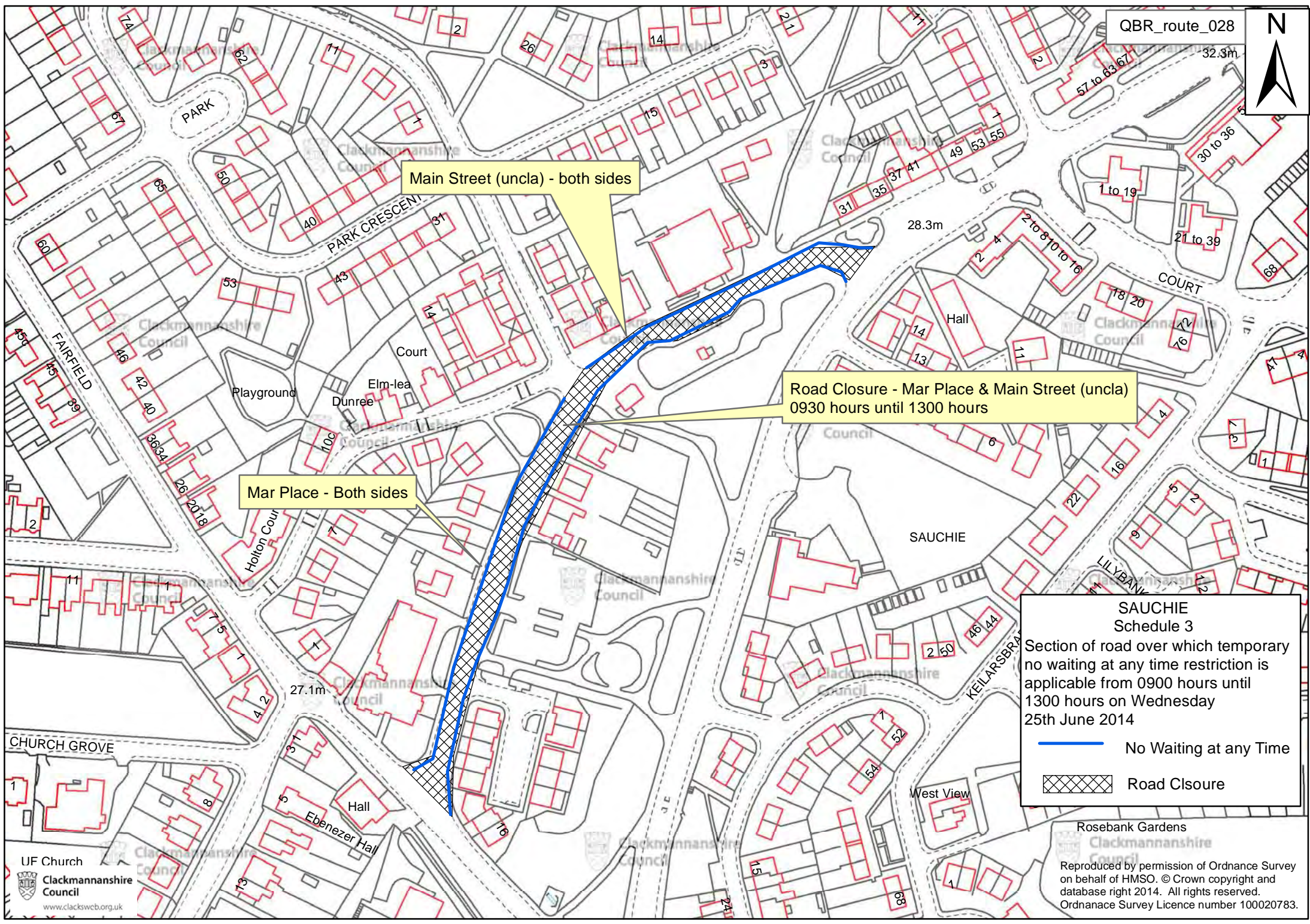
Kilncraigs Car Park
Closed 10.00am until 11.15am

No Parking in first 2 rows

Kilncraigs Road/Scott Crescent -South Side

Road Closed - 10am until 10.30am

ALLOA
Schedule 2
Section of road over which temporary
no waiting at any time restriction is
applicable from 0930 hours until
1115 hours on Wednesday
25th June 2014
— No Waiting at any Time




Main Street (uncla) - both sides


Road Closure - Mar Place & Main Street (uncla)
0930 hours until 1300 hours

Mar Place - Both sides

SAUCHIE
Schedule 3

Section of road over which temporary no waiting at any time restriction is applicable from 0900 hours until 1300 hours on Wednesday 25th June 2014


 No Waiting at any Time

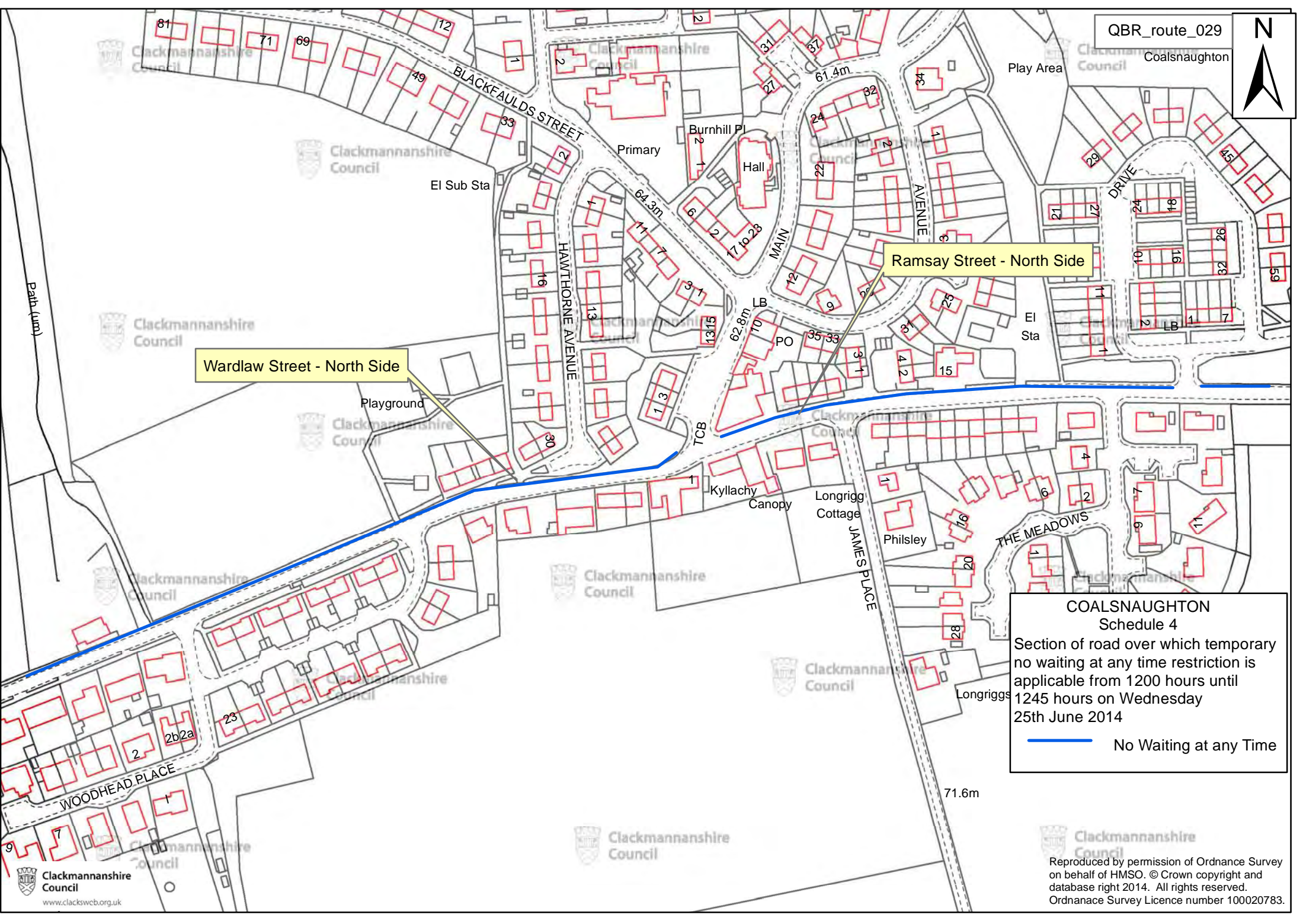
 Road Closure

Wardlaw Street - North Side

Ramsay Street - North Side

COALSNAUGHTON
Schedule 4
Section of road over which temporary
no waiting at any time restriction is
applicable from 1200 hours until
1245 hours on Wednesday
25th June 2014

 No Waiting at any Time






QBR_route_030

No Access on Castle Street during the QBR visit

Dollar Glen Car Park

DOLLAR GLEN CAR PARK
 Schedule 5
 Section of road over which temporary no waiting at any time restriction is applicable from 1230 hours until 1330 hours on Wednesday 25th June 2014

 No Waiting at any Time

