



**Clackmannanshire  
Council**

[www.clacksweb.org.uk](http://www.clacksweb.org.uk)

**(VARIOUS STREETS, TILlicOUNTRY)  
(20 MPH SPEED LIMIT) (AMENDMENT NO.1) ORDER 2014**

Clackmannanshire Council, in exercise of the powers conferred upon it by Section 84(1) and (2) and Part IV of Schedule 9 to the Road Traffic Regulation Act 1984 (as amended) and all other enabling powers and after consultation with the Chief Officer of Police in accordance with Part III of Schedule 9 to the said Act, hereby make the following Order:-

- (1) This Order may be cited as "The Clackmannanshire Council (Various Streets, Tillicoultry) (20 mph Speed Limit) (Amendment No. 1) Order 2014" and shall come into operation on the 8th August 2014.
- (2) The Interpretation Act 1978 shall apply for the interpretation of this Order as it applies for the interpretation of an Act of Parliament.
- (3) This Order amends "The Clackmannanshire Council (Various Streets, Tillicoultry) (20 mph Speed Limit) Order 2014" by adding to the Schedule to that order, the additional lengths of road as detailed in the Schedule to this Amendment Order.
- (4) A speed limit of 20 miles per hour is hereby imposed on the lengths of roads specified in the Schedule to this Order and no person shall drive any motor vehicle at a speed exceeding 20 miles per hour on the said lengths of roads.

- (5) The restriction imposed by this Order shall be in addition to and not in derogation of any restriction or requirement imposed by any regulations made or having effect as if made under the Road Traffic Regulation Act 1984 or by or under any other enactment.

**DATED THIS TWENTY FOURTH DAY OF JULY, TWO THOUSAND AND FOURTEEN**

**GARRY DALLAS**

Director of Services to Communities

Clackmannanshire Council  
Kilncraigs  
ALLOA  
FK10 1EB

**THE CLACKMANNANSHIRE COUNCIL  
(VARIOUS STREETS, TILlicOUNTRY)  
(20 MPH SPEED LIMIT) (AMENDMENT NO.1) ORDER 2014**

<b>Schedule</b>	
	<b>Sections of road over which 20 mph speed limit restriction will be applicable</b>
<b>Lower Mill Street, Tillicoultry</b>	From its junction with A91 High Street southwards for a distance of 435 metres or thereby.

**THE CLACKMANNANSHIRE COUNCIL  
(VARIOUS STREETS, TILlicOUNTRY)  
(20 MPH SPEED LIMIT) (AMENDMENT NO.1) ORDER 2014**

**Statement of Reasons for Making the Order**

1. The amendment order is required to add the undernoted section of road as it is being re-designated to a 20mph limit:

	<b>Sections of road over which 20 mph speed limit restriction will be applicable</b>
<b>Lower Mill Street, Tillicoultry</b>	From its junction with A91 High Street southwards for a distance of 435 metres or thereby.

2. The 20 MPH limit is being amended to ensure that the traffic speeds are limited to a speed compatible with the local environment.

**GARRY DALLAS**  
Director of Services to Communities

Clackmannanshire Council  
Kilncraigs  
ALLOA  
FK10 1EB

**THE CLACKMANNANSHIRE COUNCIL (VARIOUS STREETS, TILlicOUNTRY)  
(20 MPH SPEED LIMIT) (AMENDMENT NO. 1) ORDER 2014**

The Council proposes to make the above Amendment Order under Section 84(1) and (2) and Part IV of Schedule 9 to the Road Traffic Regulation Act 1984 which will amend "The Clackmannanshire Council (Various Streets, Tillicoultry) (20mph Speed Limit) Order 2014"; by adding the section of road at Lower Mill Street, Tillicoultry (From its junction with A91 High Street southwards for a distance of 435 metres or thereby) as this road is being re-designated to a 20 mph limit. The 20 mph speed limit is considered necessary to ensure that traffic speeds are limited to a speed compatible with the local environment. Objectors must state their reasons in writing to Gillian White, Strategy and Customer Services, Kilncraigs, Alloa, FK10 1EB by DATE 2014. Full details are available on [www.clacksweb.org.uk](http://www.clacksweb.org.uk) or may be examined at Clackmannanshire Council's Offices, Kilncraigs, Alloa, FK10 1EB, and any Council Office/Library, during normal office hours between DATE and DATE 2014.

**THE CLACKMANNANSHIRE COUNCIL (VARIOUS STREETS, TILlicOUNTRY)  
(20 MPH SPEED LIMIT) (AMENDMENT NO. 1) ORDER 2014**

The Council has made the above Amendment Order under Section 84(1) and (2) and Part IV of Schedule 9 to the Road Traffic Regulation Act 1984 which will amend "The Clackmannanshire Council (Various Streets, Tillicoultry) (20mph Speed Limit) Order 2014"; by adding the section of road at Lower Mill Street, Tillicoultry (From its junction with A91 High Street southwards for a distance of 435 metres or thereby) as this road is being re-designated to a 20 mph limit. The 20 mph speed limit is considered necessary to ensure that traffic speeds are limited to a speed compatible with the local environment. Anyone wishing to question the validity of any of the provisions within this order should write to the Court of session within six weeks of 08/08/14. Full details are available on [www.clacksweb.org.uk](http://www.clacksweb.org.uk) or may be examined at Clackmannanshire Council's Offices, Kilncraigs, Alloa, FK10 1EB, and any Council Office/Library, during normal office hours.

**THE CLACKMANNANSHIRE COUNCIL  
(VARIOUS STREETS, TILlicOUNTRY)  
(20 MPH SPEED LIMIT) (AMENDMENT NO.1) ORDER 2014**

Clackmannanshire Council has made the above named Amendment Order under Section 84(1) and (2) and Part IV of Schedule 9 to the Road Traffic Regulation Act 1984 (as amended) on 24th July 2014, which will amend "The Clackmannanshire Council (Various Streets, Tillicoultry) (20mph Speed Limit) Order 2014".

FULL DETAILS of this Amendment Order is as published in the Alloa Advertiser on the 23rd April 2014 which will add section of road at Lower Mill Street, Tillicoultry as this road is being re-designated to a 20 mph limit. The 20 mph speed limit is considered necessary to ensure that traffic speeds are limited to a speed compatible with the local environment.

A copy of the order, together with a copy of the relative plan is available on [www.clacksweb.org.uk](http://www.clacksweb.org.uk) or may be examined at Clackmannanshire Council's Headquarters at Kilncraigs, Alloa, FK10 1EB or or at any Council Office / Library, during normal office hours, free of charge. Any person wishing to object to the validity of the order or of any provision contained therein on the grounds that it is not within the powers conferred by the aforesaid Act or that if any requirement therein has not been complied with, may within six weeks from 8th August 2014 apply to the Court of Session for this purpose.

**GARRY DALLAS**  
Director of Services to Communities

Clackmannanshire Council, Kilncraigs, ALLOA, FK10 1EB

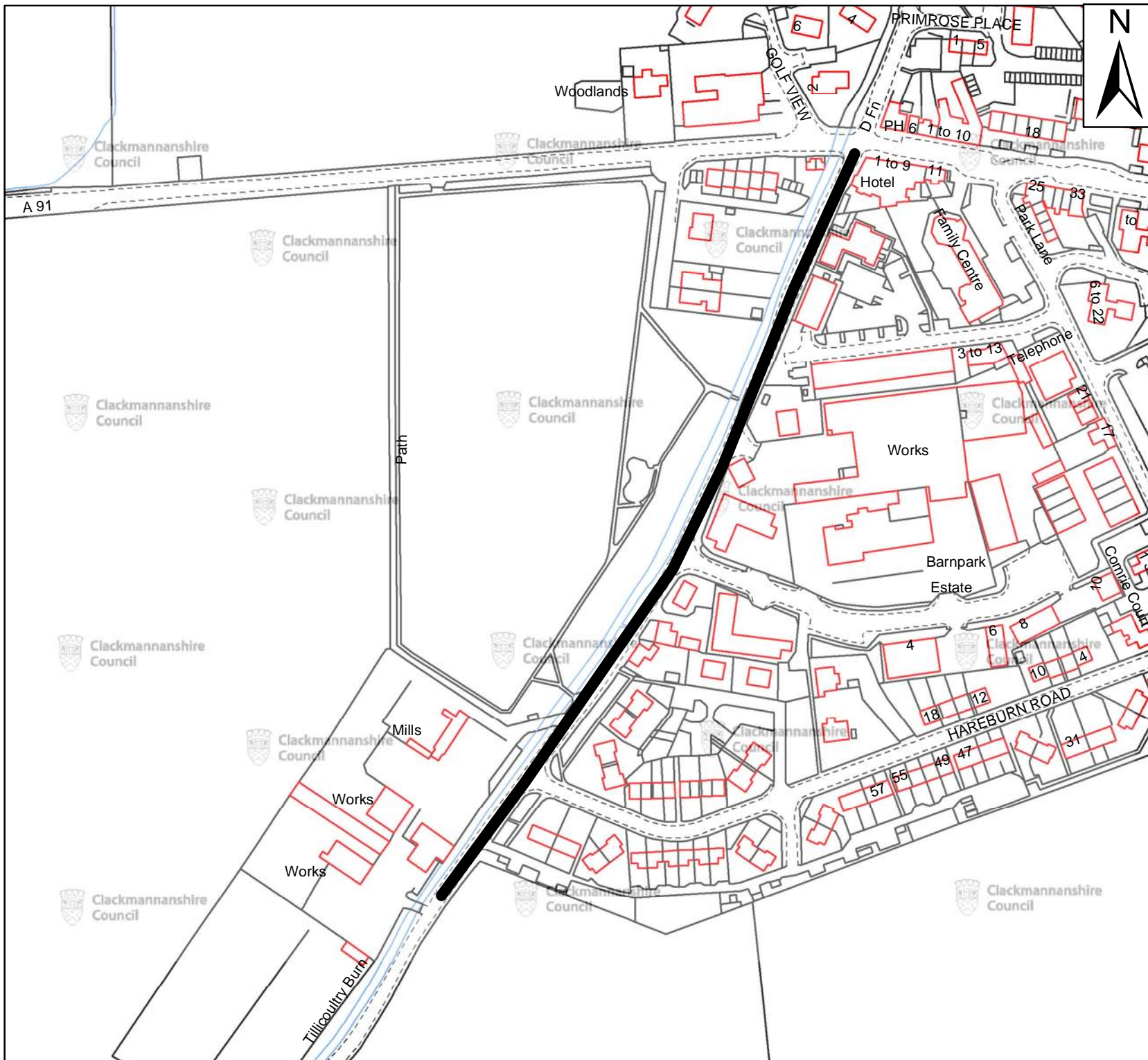
<b>Schedule</b>	
	<b>Sections of road over which 20 mph speed limit restriction will be applicable</b>
<b>Lower Mill Street, Tillicoultry</b>	From its junction with A91 High Street southwards for a distance of 435 metres or thereby.

**THE CLACKMANNANSHIRE COUNCIL  
(VARIOUS STREETS, TILlicoultry)  
(20 MPH SPEED LIMIT) (AMENDMENT NO.1) ORDER 2014**

This is the plan referred to in The Clackmannanshire Council (Various Streets, Tillicoultry) (20 mph Speed Limit) (Amendment No. 1) Order 2014 made by Clackmannanshire Council on 24th July 2014.

**GARRY DALLAS**  
Director of Services to Communities

Clackmannanshire Council  
Kilncraigs  
ALLOA  
FK10 1EB



20mph speed limit

DRG14-019  
Lower Mill Street, Tillicoultry  
20mph Speed Limit

Scale : NTS  
Paper Size : A4

Date : March 2014



**Clackmannanshire  
Council**

[www.clacksweb.org.uk](http://www.clacksweb.org.uk)

Services to Communities  
Kilncraigs  
Greenside Street  
Alloa  
FK10 1EB

Tel: 01259 450 000 Fax: 01259 727 452  
[development\\_services@clacks.gov.uk](mailto:development_services@clacks.gov.uk)

Reproduced by permission of Ordnance Survey  
on behalf of HMSO. © Crown copyright and  
database right 2014. All rights reserved.  
Ordnance Survey Licence number 100020783.