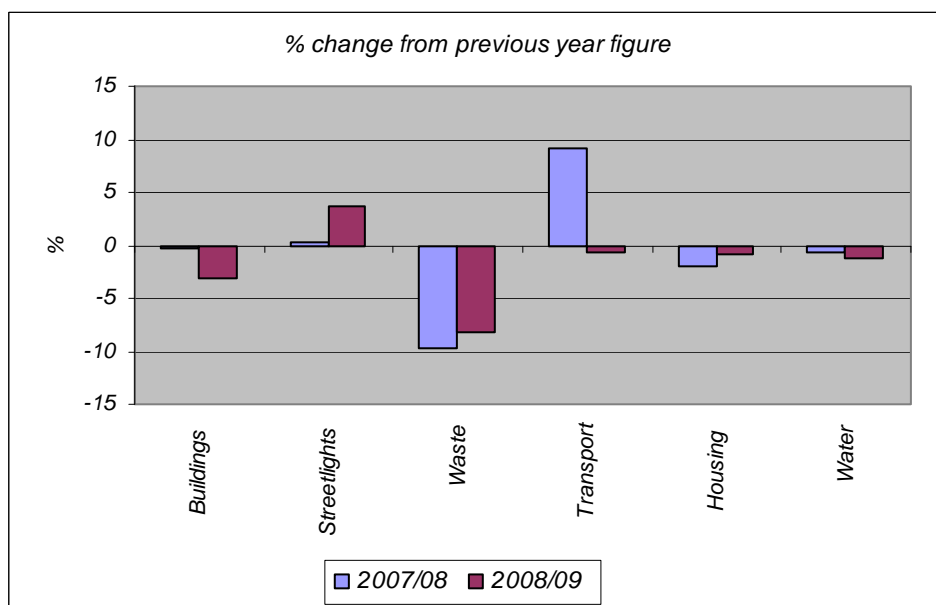


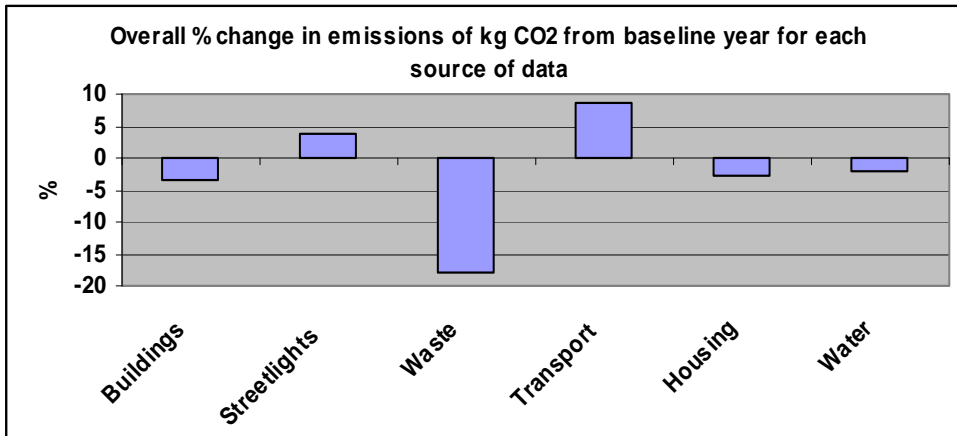
Local Authority Carbon Management Baseline Data

A total baseline of carbon emissions was established around 46.8 million kg CO₂ per annum in 2006/07. There was an overall reduction on -4.4% to 44.7 million kg CO₂ per annum in 2008/09.

Category	2006/07 Kg CO ₂	2007/08 Kg CO ₂	% change	2008/09 Kg CO ₂	% change
Buildings	7,914,273	7,886,723	-0.3	7,631,984	-3.2
Streetlights	1,769,297	1,772,080	0.2	1,835,619	3.6
Waste	7,050,531	6,357,234	-9.8	5,837,820	-8.2
Transport	1,487,726	1,623,372	9.1	1,613,785	-0.6
Housing	28,537,417	27,992,190	-1.9	27,771,302	-0.8
Water	35,021	34,773	-0.7	44,724,823	-1.3
Total	46,794,265	45,666,372	-2.4	44,724,823	-2.1
				Overall reduction (06/07-08/09)	-4.4%

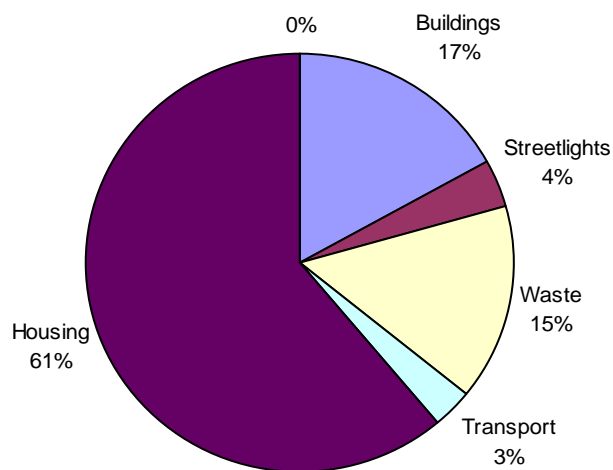
The following graphs show the % change from previous year figure for each of the sources of data and the overall % change in emissions of kg CO₂ from baseline year of 2006/07 for each source of data . The largest decrease in emissions has been waste (total -17.2% from 2006/07 baseline year) . Streetlights is the only source that has increased its emissions for the two consecutive years. Transport has the largest increase overall of 8.5% from 2006/07 baseline figure.



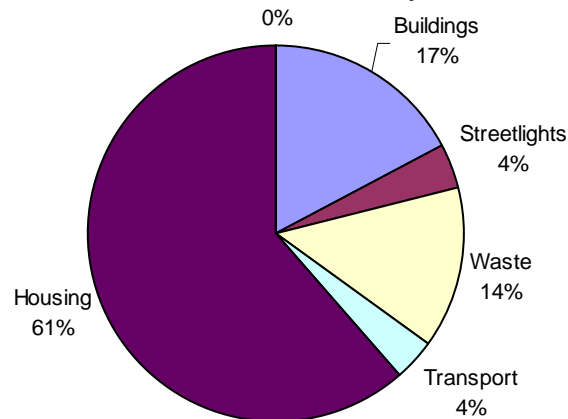


The following graphs show a graphical representation of the breakdown of CO2 emissions by source for the years 2006/07, 2007/08 and 2008/09. There has been very little change in the % of overall emissions source. Housing represented the largest (61-62%) of the total overall.

Clackmannanshire Council CO2 by Emissions Source 2006/07



Clackmannanshire Council CO2 by Emissions Source 2007/08



Clackmannanshire Council CO2 by Emissions Source 2008/09

