

## Comments and Complaints

Social Services has a Complaints Officer to ensure all complaints are dealt with thoroughly, fairly and within a reasonable timescale.

### Complaints Officer/Complaints Monitoring Officer

Social Services,  
Lime Tree House, Alloa FK10 1EX

Tel: 01259 452367 / 452373

یہ دستاویز کے بارے میں معلومات فراہم کرتا ہے۔ ایڈٹ یعنی بالغ افراد کے لئے کیئر سروس  
اس دستاویز کو اپنی زبان میں سمجھنے کے واسطے اگر آپ کو مدد کی ضرورت ہے تو برائے مہربانی اسکو کونسل آفس  
لے جائیں اور ریسپنشن پر پوچھیں۔ کونسل کے دفاتر کے پتے نیچے درج ہیں۔

لائیئم ٹری ہاؤس	گرین فیلڈ ہاؤس
کاسل سٹریٹ	ٹیپلی ہڈی روڈ
آلوا	آلوا
FK10 1EX	FK10 2AD

這文件內容是有關 成人護理服務。  
如你需要，我們可以用你的語言幫助你了解此文件的內容。請携同此文件到議局辦公室接待處查詢。辦公室地址如下：

Greenfield House 青田樓 Tullibody Road Alloa FK10 2AD	Limetree House 檸樹樓 Castle Street Alloa FK10 1EX
---	--

Niniejszy document udziela informacji na temat Opieki Społecznej dla Dorosłych.  
Jeśli chcieliby Państwo skorzystać z pomocy w zrozumieniu tego dokumentu w swoim języku, proszę go ze sobą zabrać do Biura Rady Miejskiej (Council Office) i zapytać w recepcji. Mogą Państwo znaleźć Biura Rady Miejskiej pod poniższymi adresami:

Greenfield House Tullibody Road Alloa FK10 2AD	Limetree House Castle Street Alloa FK10 1EX
---	--

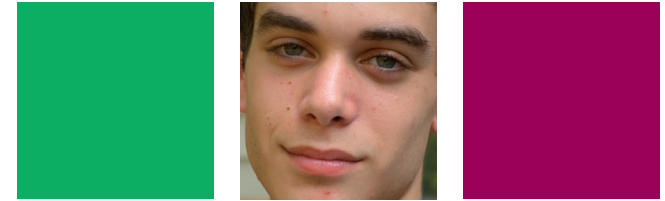
Further information can be obtained on the Clackmannanshire Council website: [www.clacksweb.org.uk](http://www.clacksweb.org.uk).

Contact the Research & Information Service on 01259 452519 to obtain further supplies of this leaflet or to request any changes.

AC14/D Leaflet produced April 2011 (2/09) PR250 D2 SUP-EMPLOY.IND



## Supported Employment Services



Supporting people with disabilities to access Education, Training and Employment opportunities.

## Core Values of the Council

Commitment, Trust and Partnership  
Openness and Accountability  
Respect and Dignity  
Equity, Fairness and Inclusion



Clackmannanshire Council

[www.clacksweb.org.uk](http://www.clacksweb.org.uk)

## How we can help

Our team can help you with recruitment and training by-

- ▶ Working in partnership with you.
- ▶ Job matching- helping you find the right people for your vacancies.
- ▶ Providing job coaching in the workplace if required.
- ▶ Offering guidance on Disability Awareness
- ▶ Providing ongoing support and long term commitment to you and your employee.
- ▶ Arranging unpaid job tasters which provide real work experience.
- ▶ Forming links with other agencies who can provide information on further opportunities for you as an employer.



## Our Aims

- ▶ To support employers to access a diverse workforce.
- ▶ To promote social inclusion in the workplace.

## (Our services are free of charge)

Join the other employers in this area who have benefitted from our service.

See the potential in people from diverse backgrounds and abilities.

## Contact us to find out more

### Contact Details

Supported Employment Services  
Whins Resource Centre,  
The Whins, Whins Road,  
Alloa, FK10 3SA

Tel: 01259 226800  
450000 Fax: 01259 226803

or look at our website on :

[www.clacksweb.org.uk/social/ses](http://www.clacksweb.org.uk/social/ses)

