

Fig 11.1: Forth Viaduct to Causewayhead (without mitigation)



Fig 11.2: Waterside to Logieburn (without mitigation)



Fig 11.3: Forth Viaduct to Causewayhead (with mitigation)

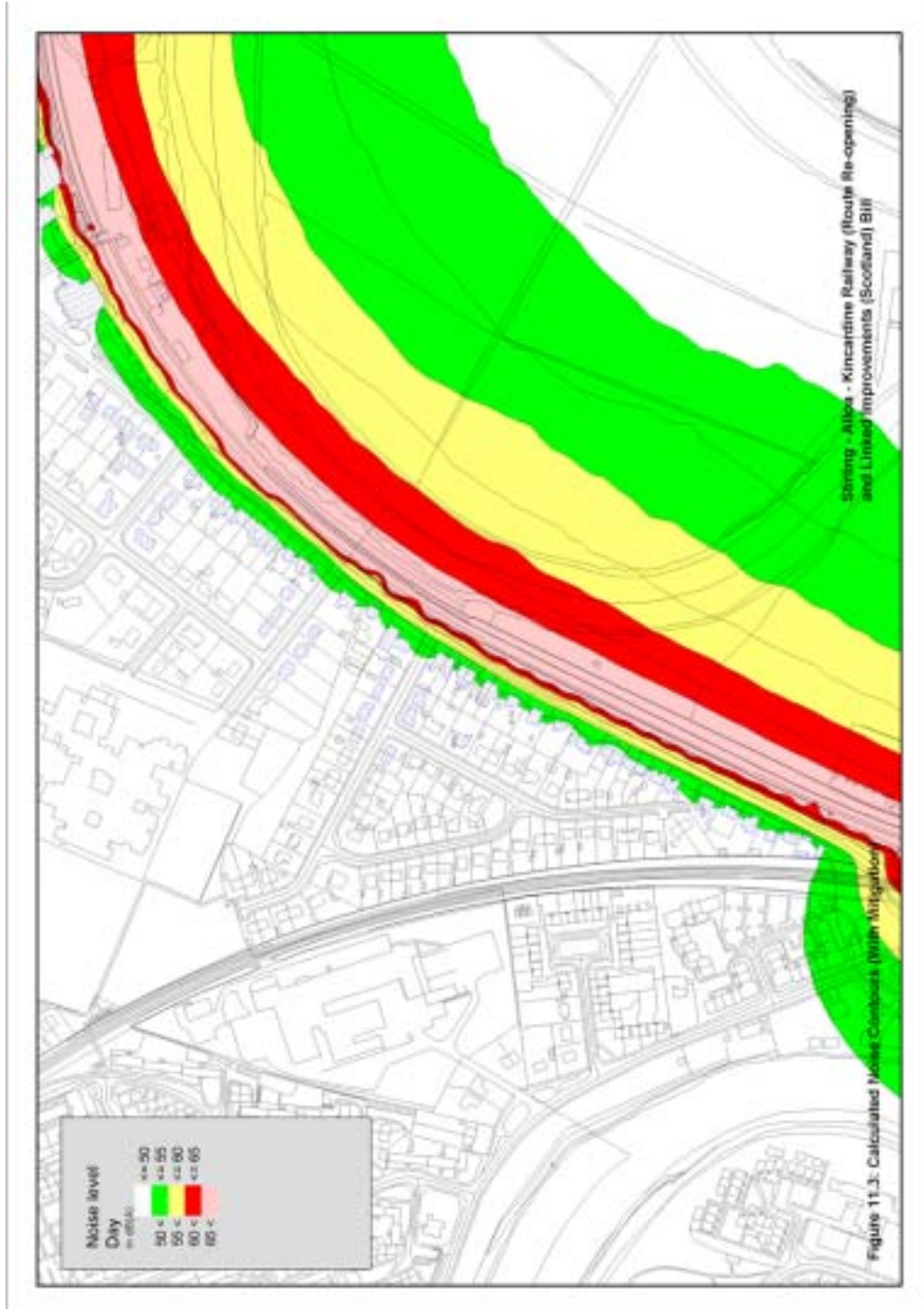


Fig 11.4: Waterside to Logieburn (with mitigation)

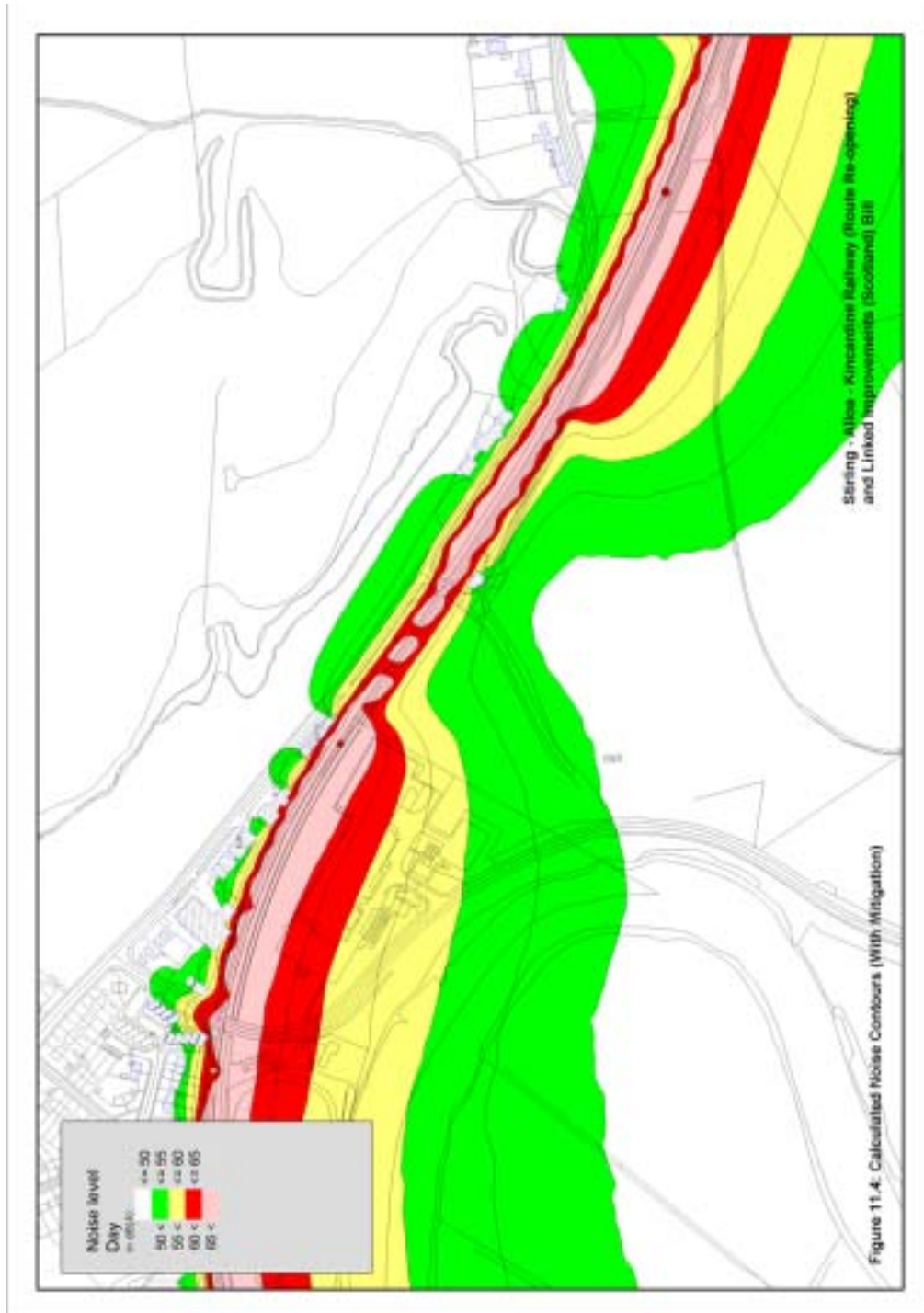


Fig 11.5: Cambus (without mitigation)



Fig 11.7: Claremont to Whins Road (without mitigation)

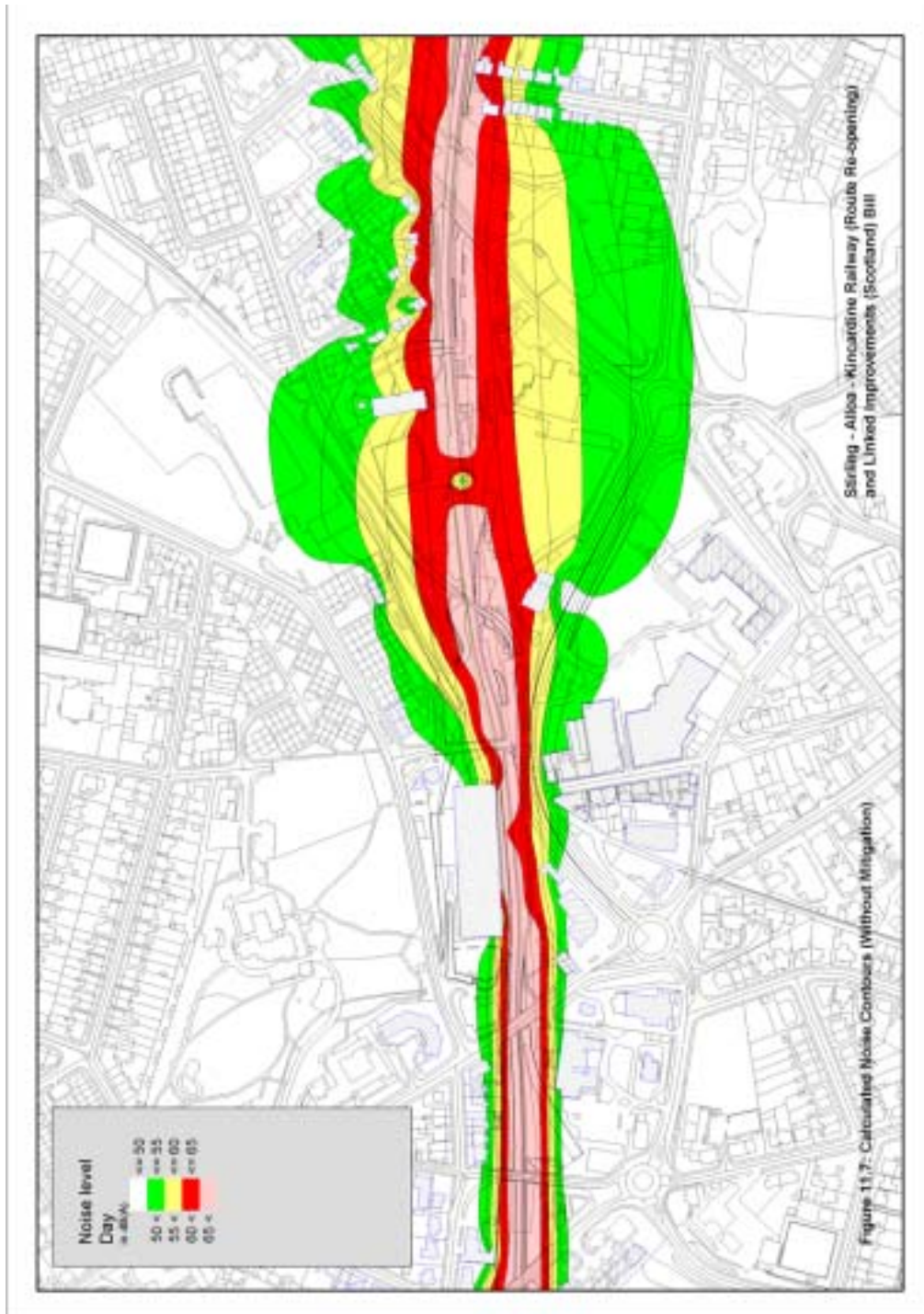


Fig 11.8: Whins Road to Hilton Farm (without mitigation)

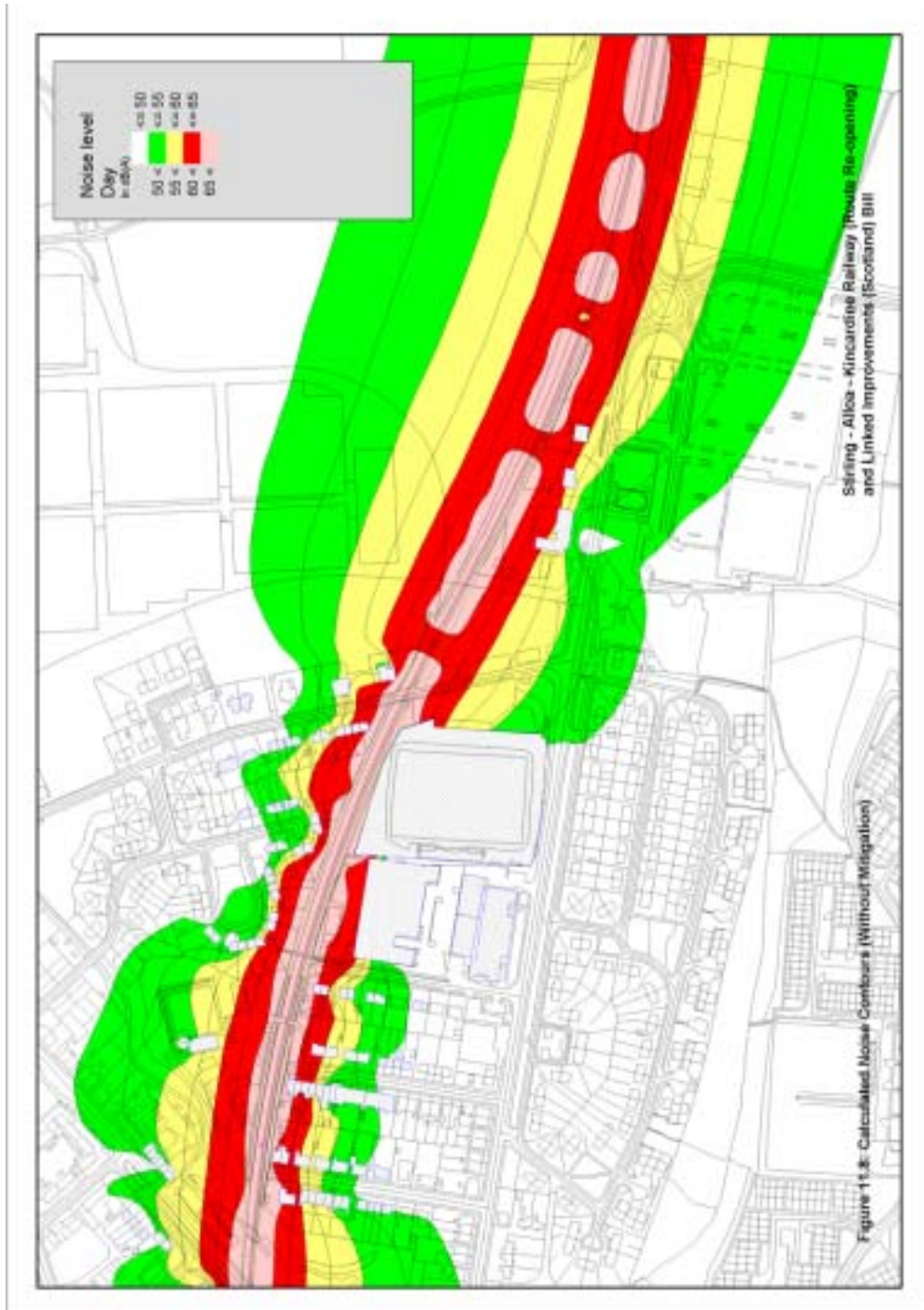


Fig 11.9: Cambus (with mitigation)

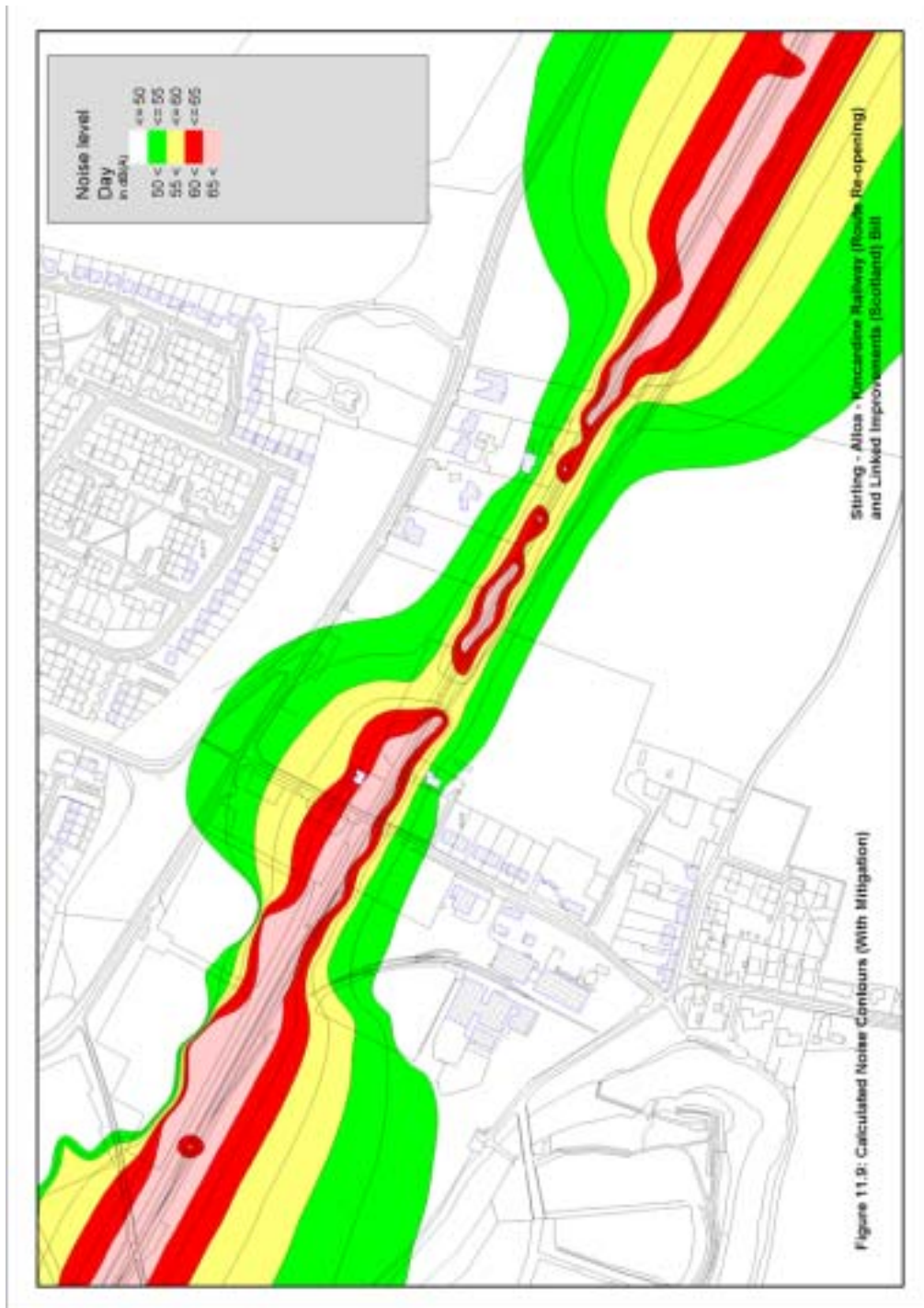


Fig 11.10: Alloa West to Claremont (with mitigation)

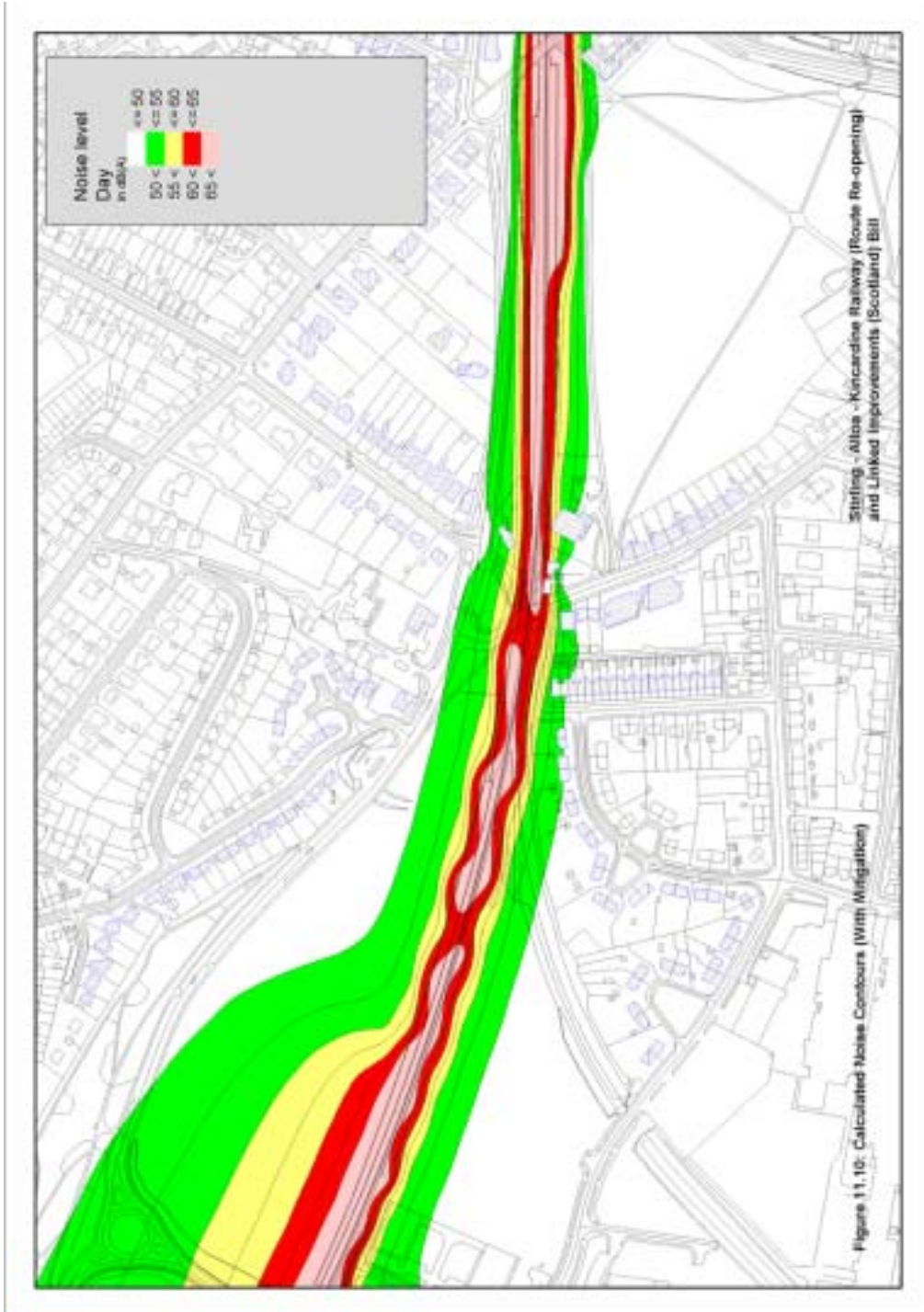


Fig 11.11: Claremont to Whins Road (with mitigation)

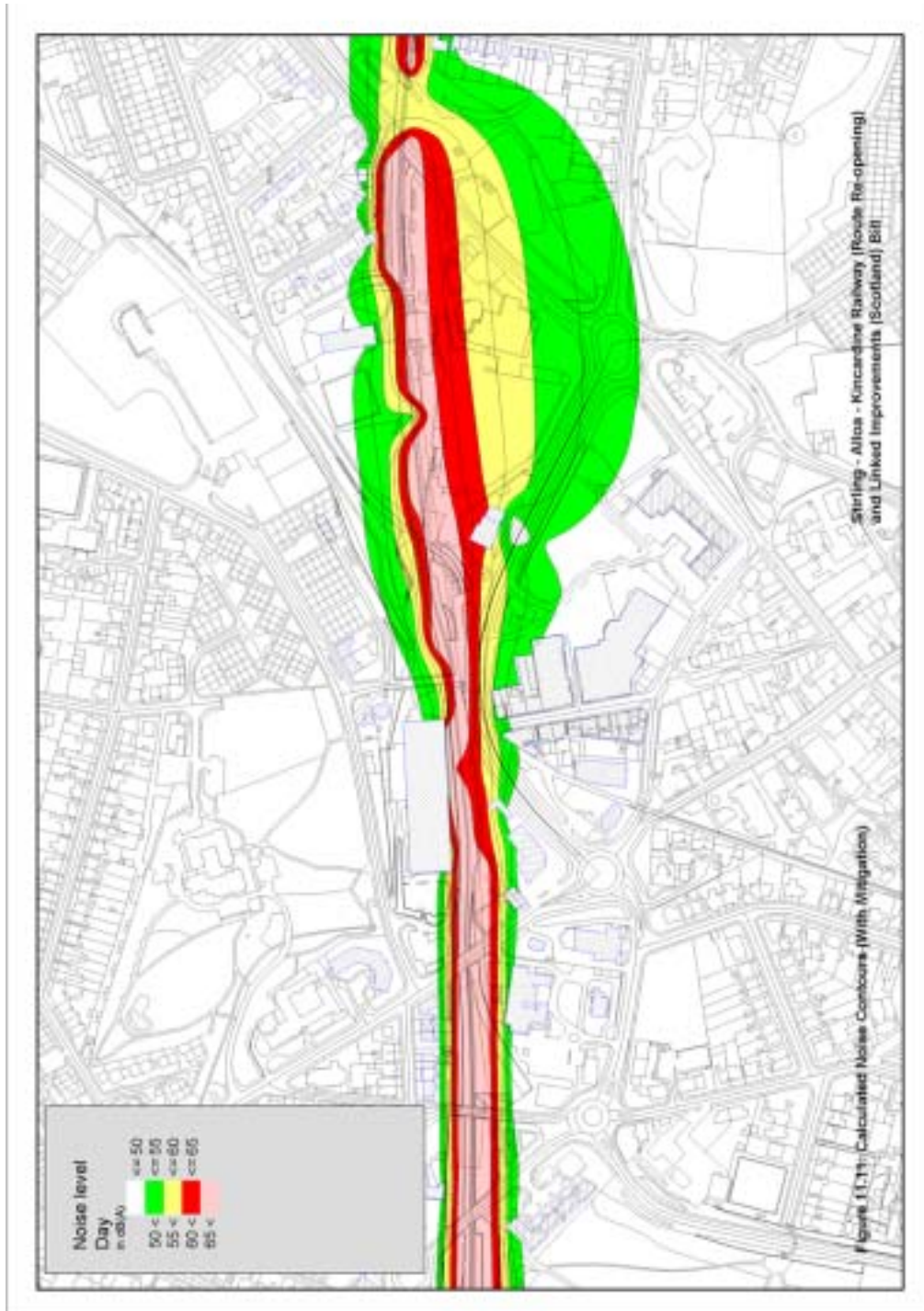


Fig 11.12: Whins Road to Hilton Farm (with mitigation)

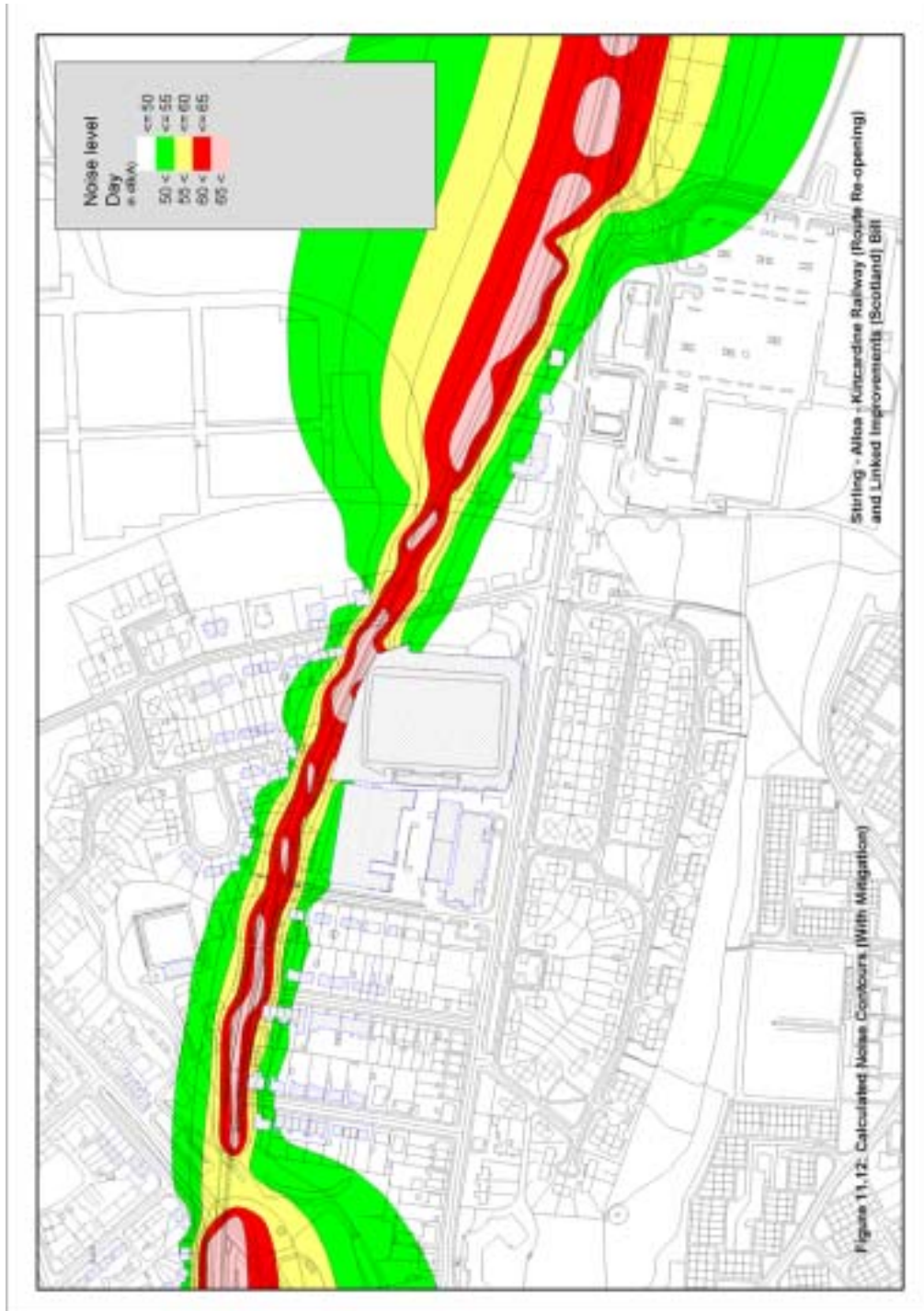


Fig 11.13: Dunfermline Junction to Mill Road (without mitigation)

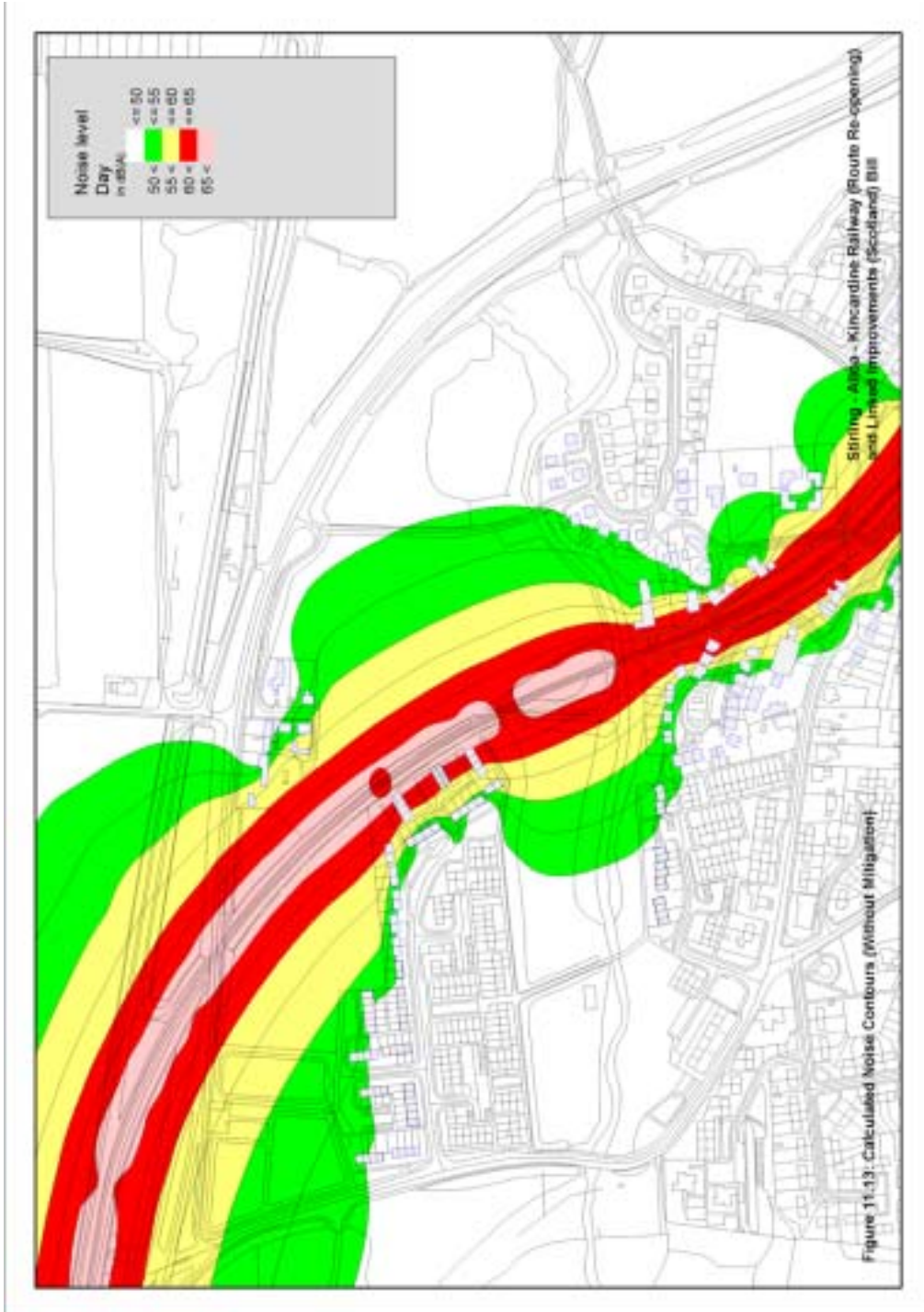


Fig 11.14: Cattle Market to Clackmannan (south east) (without mitigation)



Fig 11.15: Kennet (without mitigation)

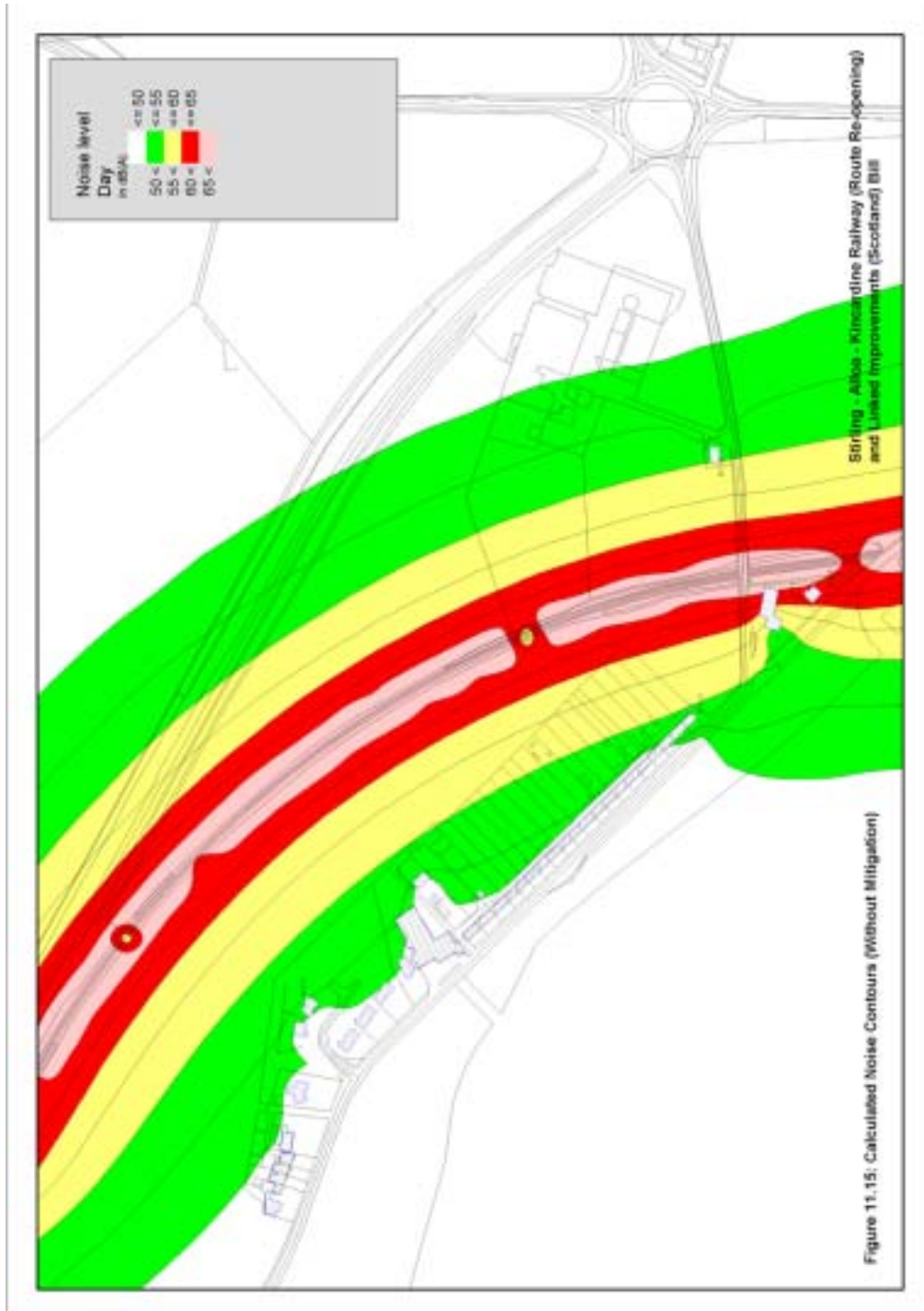


Fig 11.16: Dunfermline Junction to Mill Road (without mitigation)

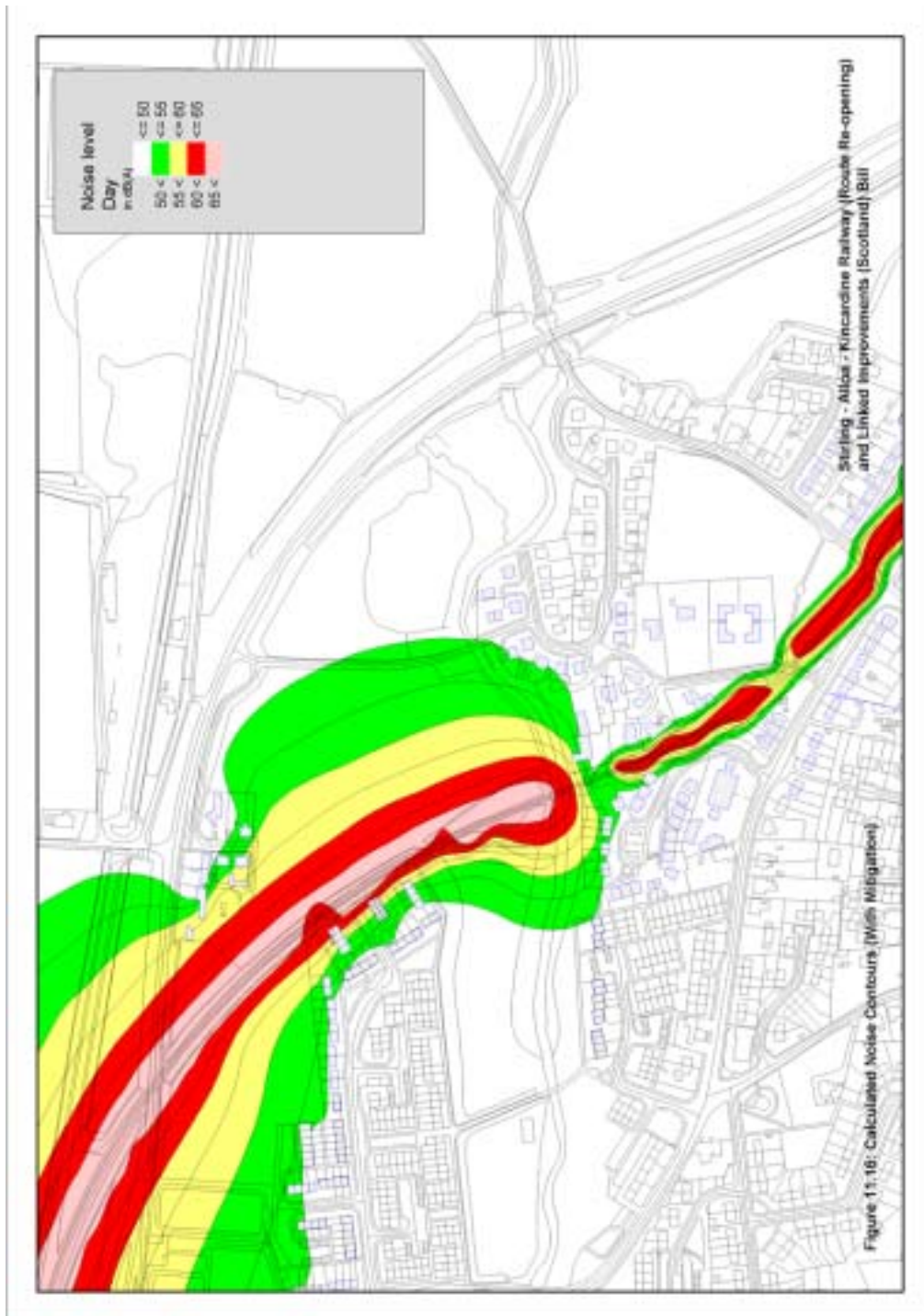


Fig 11.17: Cattle Market to Clackmannan (south east) (without mitigation)

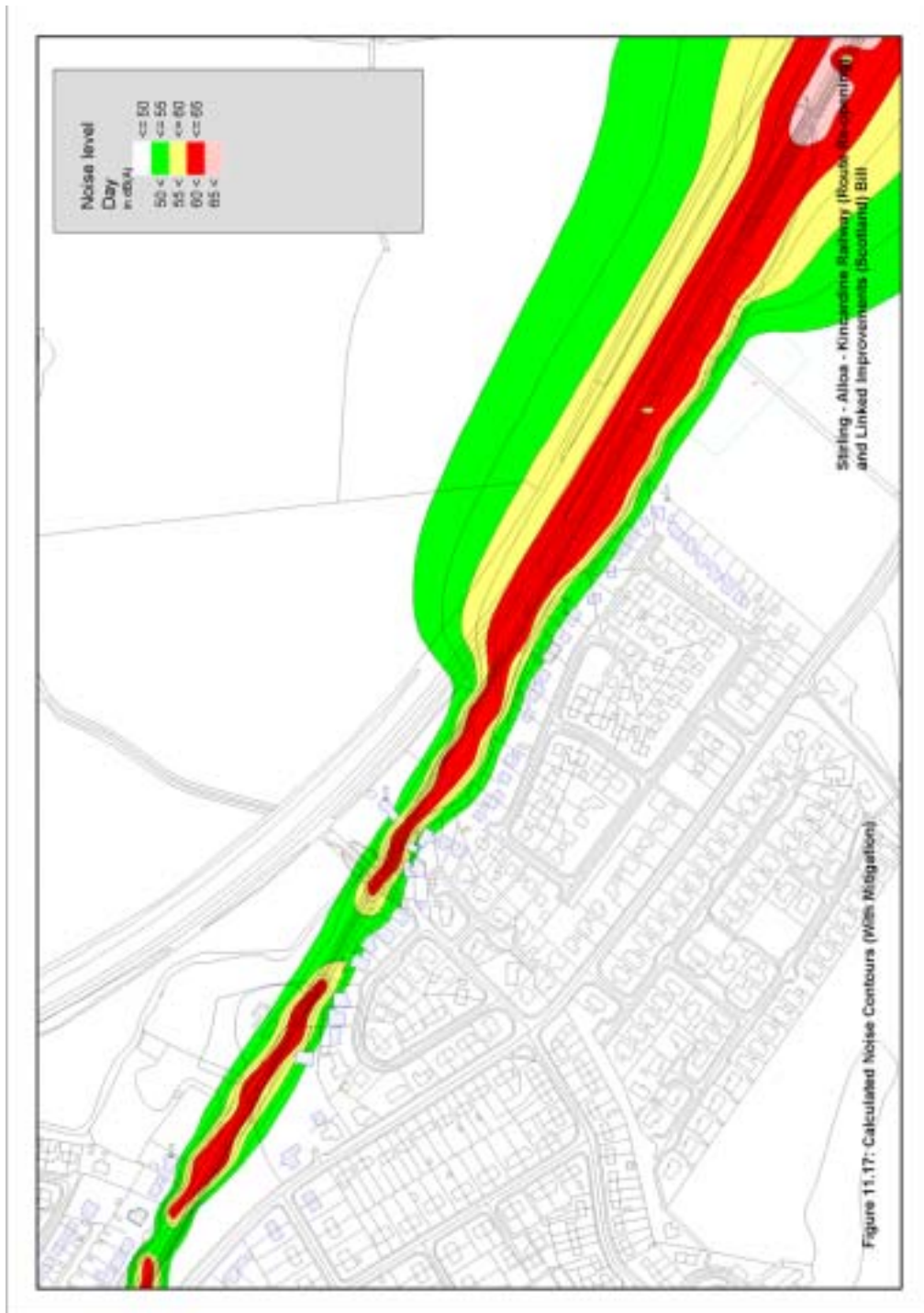


Fig 11.18: Kennet (with mitigation)

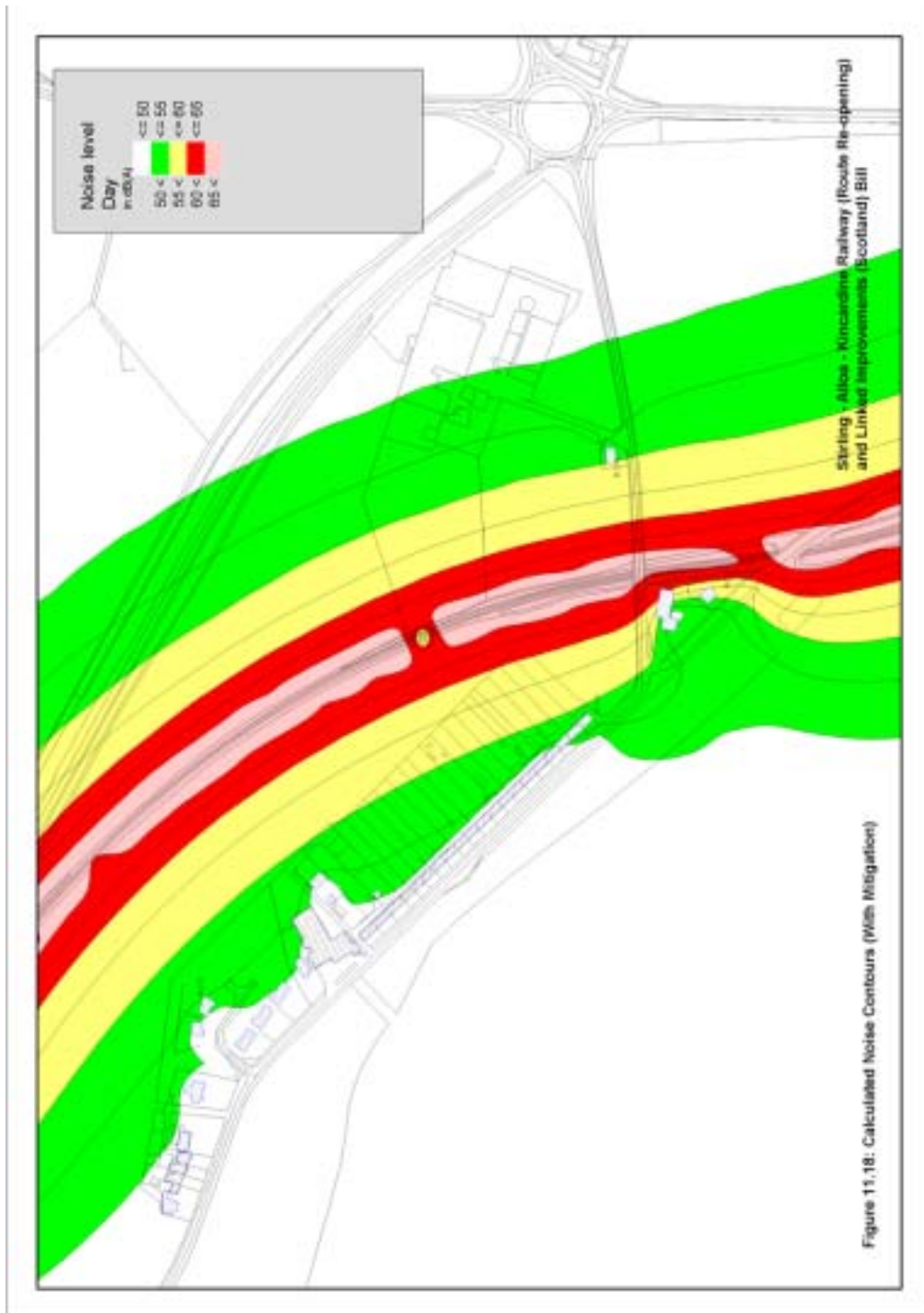


Fig 11.19: Tulliallan Castle (without mitigation)

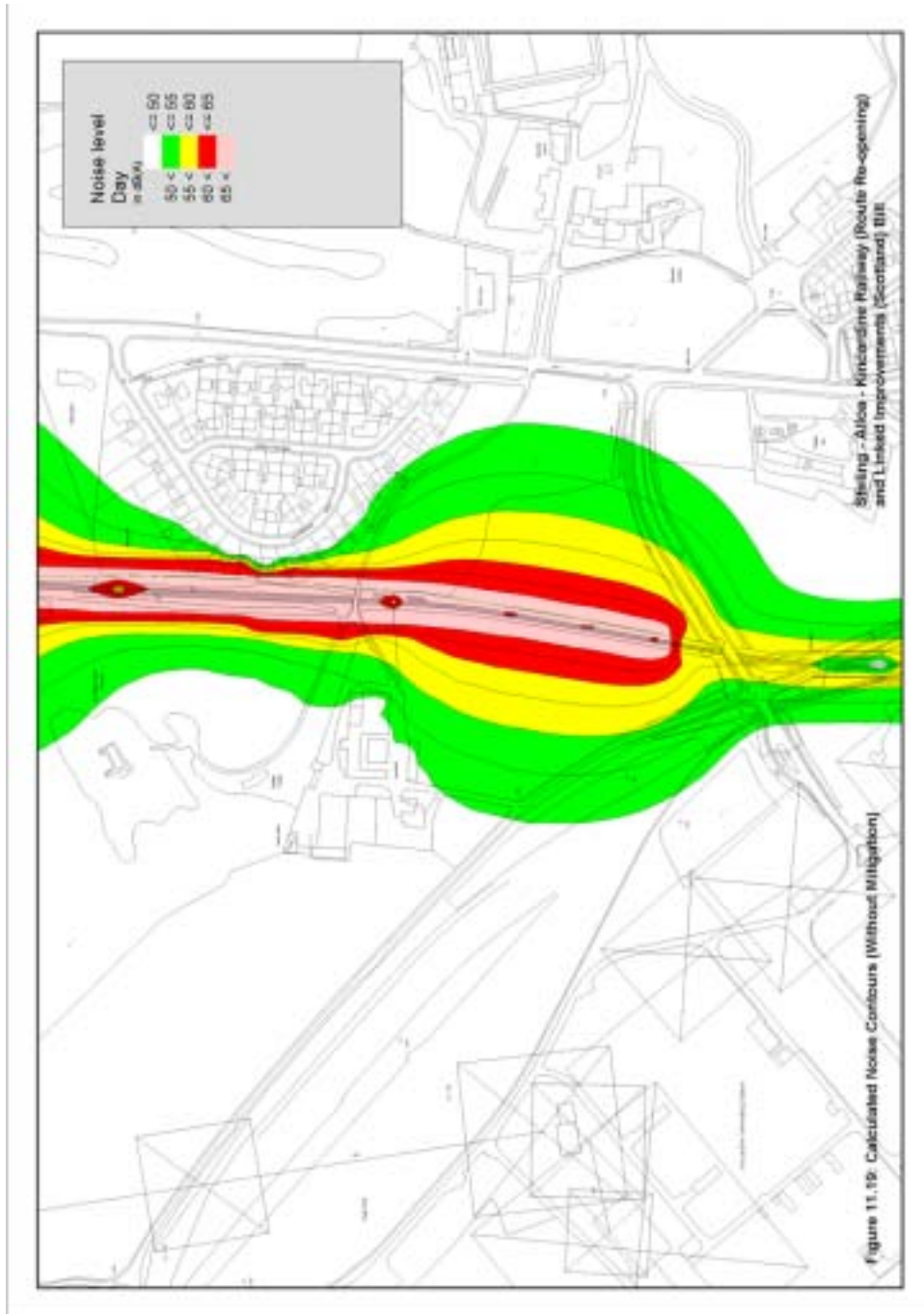


Fig 11.20: Hawkhill Road to Kincardine Station Road (without mitigation)

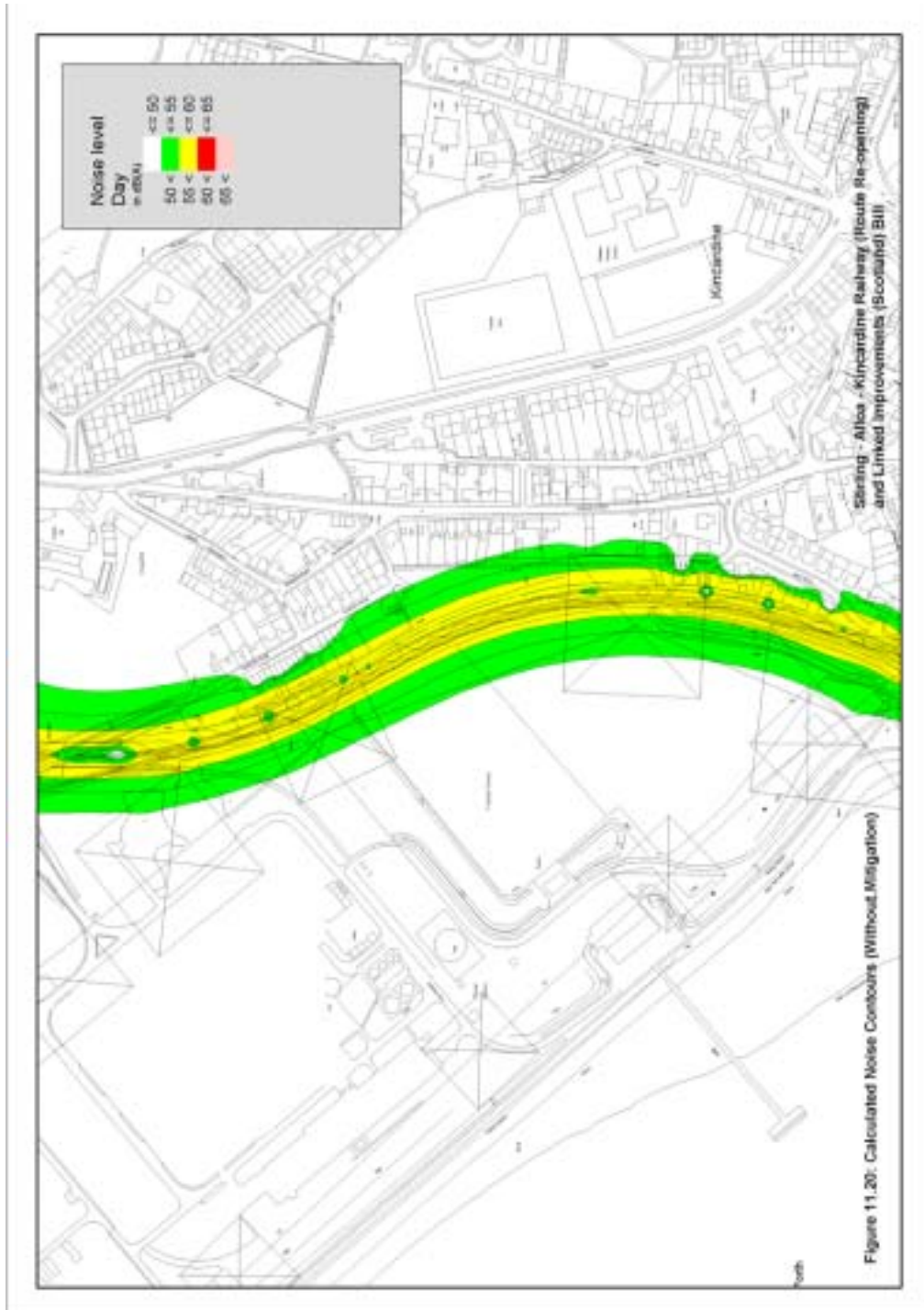


Fig 11.21: Kincardine Station Road to Kincardine South (without mitigation)

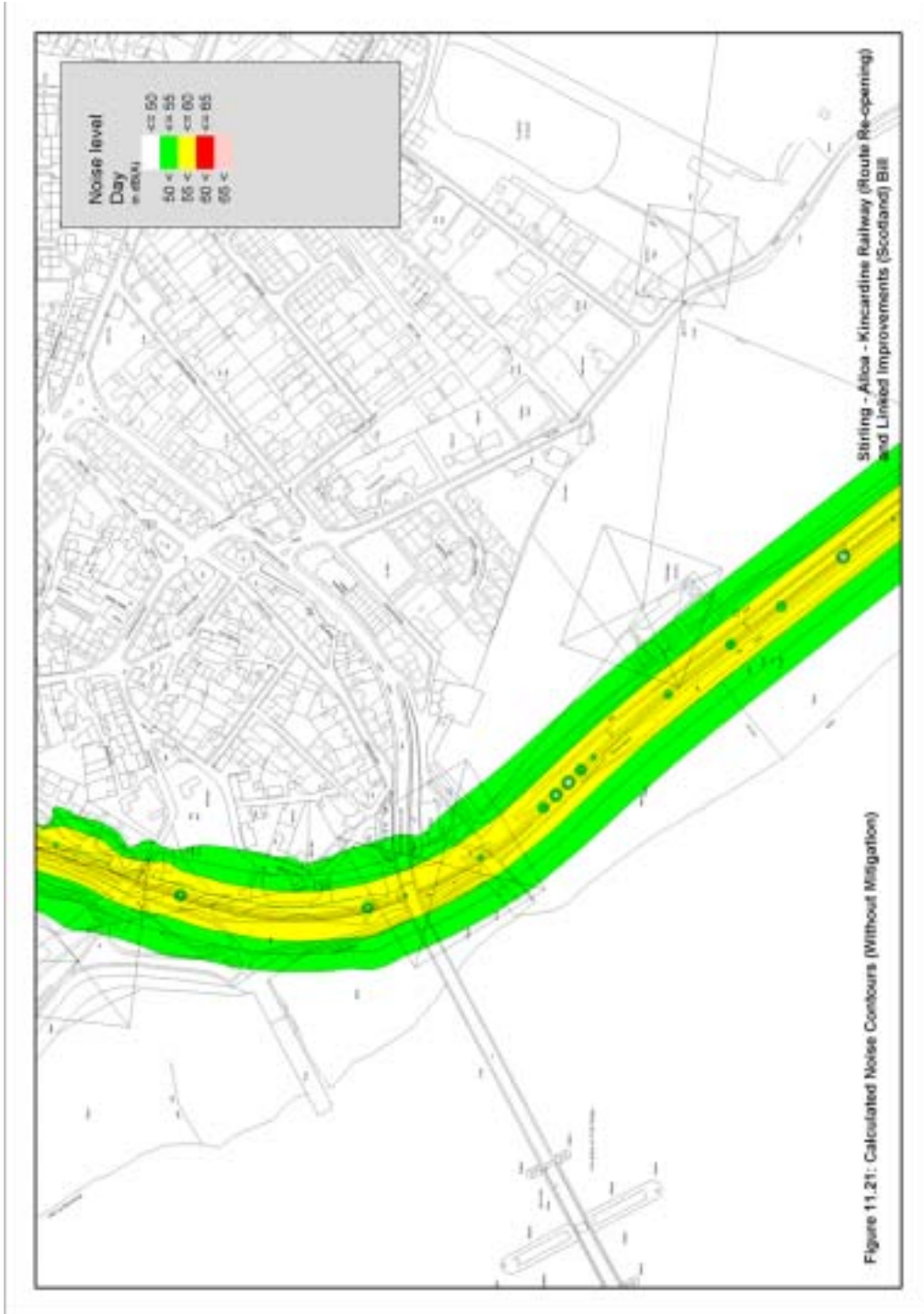


Fig 11.22: Tulliallan Castle (without mitigation)

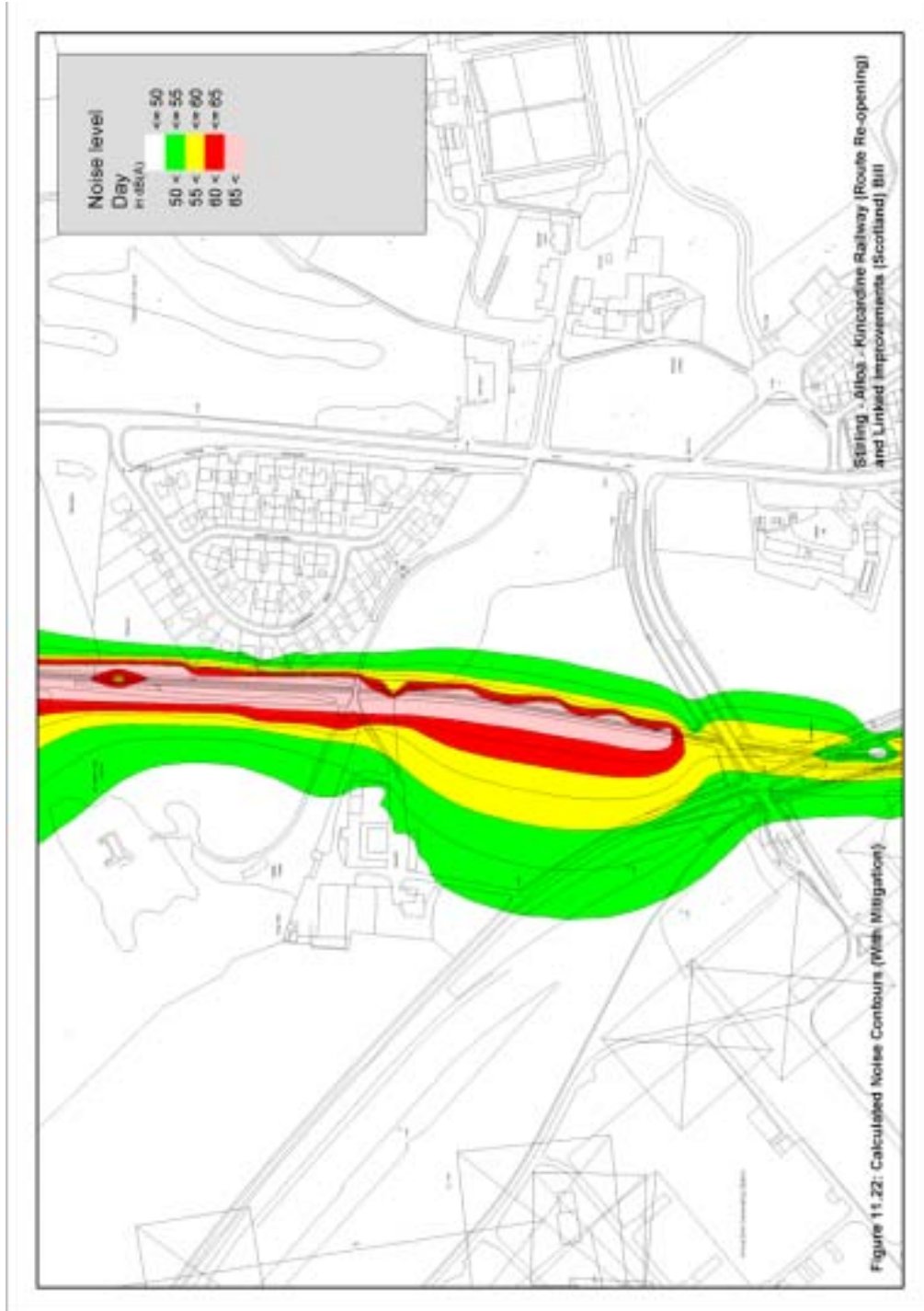


Fig 11.23: Hawkhill Road to Kincardine Station Road (without mitigation)

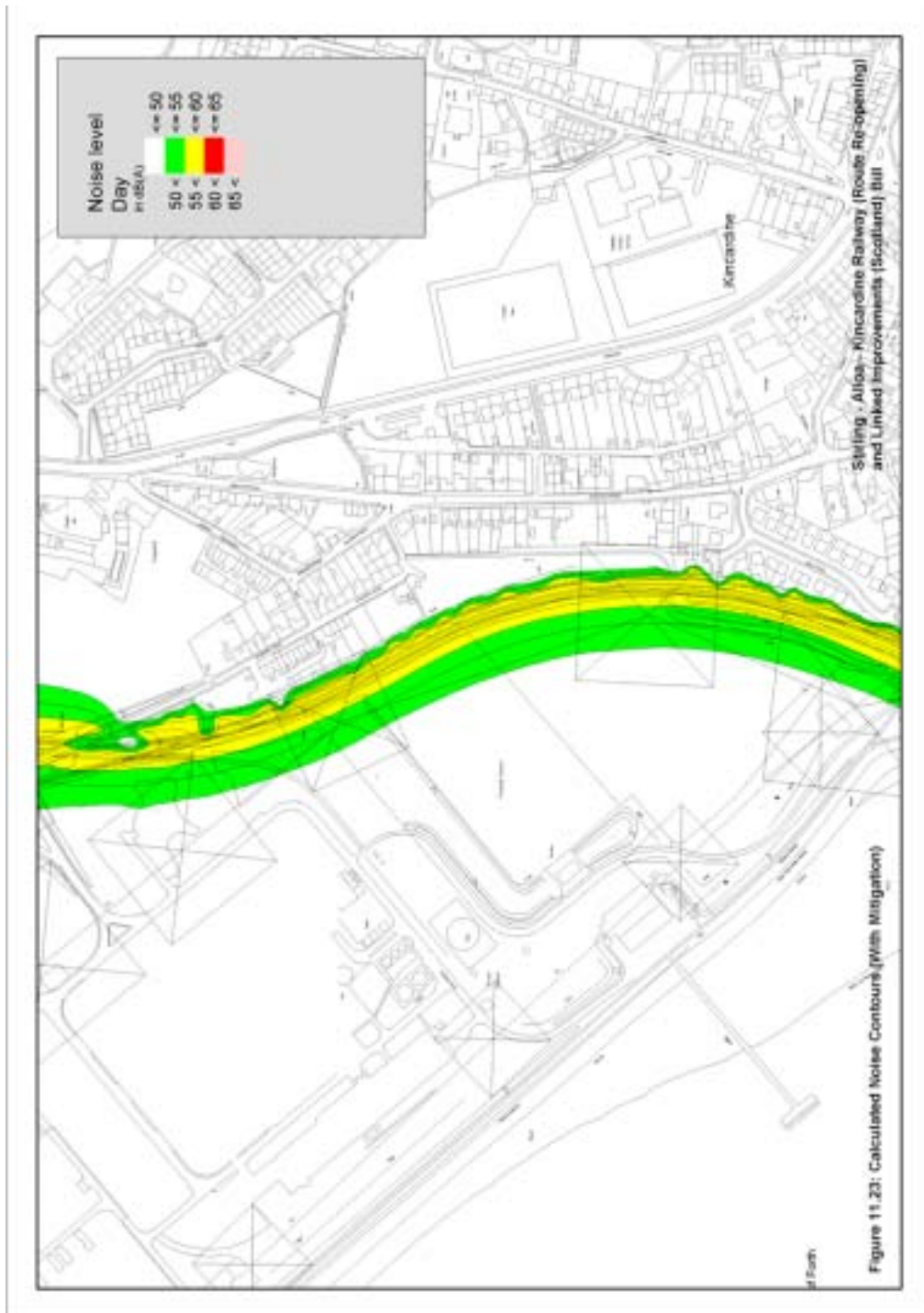


Fig 11.24: Kincardine Station Road to Kincardine South (without mitigation)

